



# RAILWAY RECRUITMENT BOARDS

रेलवे भर्ती बोर्ड

## 2<sup>nd</sup> Stage CBT for ALP & TECHNICIANS (CEN-01/2018)

Roll No:	
Participants Name:	
Test Center Name:	
Test Date:	23/01/2019
Test Time:	4:30 PM - 7:00 PM
Subject:	Part A and Exam Trade : Wireman

- Options shown in green color with a tick icon are correct
- Chosen option on top right of the question indicates the option selected by the candidate
- The numbers indicated against the Question ID and Option ID are the numbers to be noted and used for raising objections

### Section : Part A

Q.1 What is the work that needs to be done to increase the speed of a 1 kg ball from 2 m/s to 4 m/s?

- Ans  1. 6 J  
 2. 12 J  
 3. 10 J  
 4. 8 J

Question ID : 96234010165  
Option 1 ID : 96234040657  
Option 2 ID : 96234040660  
Option 3 ID : 96234040659  
Option 4 ID : 96234040658  
Status : Not Answered  
Chosen Option : --

Q.2 What is the least number which when doubled is perfectly divisible by 7, 12 and 15?

- Ans  1. 215  
 2. 214  
 3. 220  
 4. 210

Question ID : 96234010207  
Option 1 ID : 96234040827  
Option 2 ID : 96234040828  
Option 3 ID : 96234040826  
Option 4 ID : 96234040825  
Status : Not Answered  
Chosen Option : --

Q.3 In an examination, the highest score and the lowest score differed by 55 and the higher one was 9/4 times the lower one. What is the lowest score?

- Ans  1. 48  
 2. 36  
 3. 44

**X** 4. 40

Question ID : 96234010212  
Option 1 ID : 96234040848  
Option 2 ID : 96234040845  
Option 3 ID : 96234040847  
Option 4 ID : 96234040846  
Status : Answered  
Chosen Option : 3

**Q.4** Given below is a statement followed by two assumptions numbered I and II. You have to decide which of the assumptions is/are implicit in the statement.

Statement: The human body produces Vitamin D when exposed to sunlight.

Assumption I: The human body will have Vitamin D even if it is not consumed via food.

Assumption II: A large portion of the global population suffers from Vitamin D deficiency.

- Ans**
- X** 1. Both I and II are implicit
  - ✓** 2. Only assumption I is implicit
  - X** 3. Only assumption II is implicit
  - X** 4. Neither I nor II is implicit

Question ID : 96234010249  
Option 1 ID : 96234040995  
Option 2 ID : 96234040993  
Option 3 ID : 96234040994  
Option 4 ID : 96234040996  
Status : Answered  
Chosen Option : 4

**Q.5** Two planes E and F start flying from the same point. E flies 7 km west, then turns to its left and flies 15 km. Meanwhile F flies 11 km east and turns right and flies 15 km. Where is F with respect to E?

- Ans**
- ✓** 1. F is 18 km east of E
  - X** 2. F is 4 km west of E
  - X** 3. F is 18 km west of E
  - X** 4. F is 4 km east of E

Question ID : 96234010248  
Option 1 ID : 96234040992  
Option 2 ID : 96234040991  
Option 3 ID : 96234040989  
Option 4 ID : 96234040990  
Status : Answered  
Chosen Option : 1

**Q.6** Two resistors of  $2\ \Omega$  and  $6\ \Omega$  are connected in series and this combination is connected across a 12 V battery. Find the power supplied by the battery.

- Ans**
- ✓** 1. 18 W
  - X** 2. 10 W
  - X** 3. 16 W
  - X** 4. 14 W

Question ID : 96234010200  
Option 1 ID : 96234040800  
Option 2 ID : 96234040797  
Option 3 ID : 96234040799  
Option 4 ID : 96234040798  
Status : Answered  
Chosen Option : 3

Q.7 A 200 g block of iron was heated from 30°C to 60°C How much heat was transferred to the block (specific heat of iron is  $450 \text{ Jkg}^{-1}\text{K}^{-1}$ )?

- Ans
- 1. 270 J
  - 2. 27 J
  - 3. 6000 J
  - 4. 2700 J

Question ID : 96234010189  
Option 1 ID : 96234040754  
Option 2 ID : 96234040753  
Option 3 ID : 96234040756  
Option 4 ID : 96234040755  
Status : Not Answered  
Chosen Option : --

Q.8 Select the option that is related to the third term in the same way as the second term is related to the first term.

Tall : Short :: Glad : ?

- Ans
- 1. Smile
  - 2. Sad
  - 3. Emotion
  - 4. Happy

Question ID : 96234010226  
Option 1 ID : 96234040903  
Option 2 ID : 96234040901  
Option 3 ID : 96234040904  
Option 4 ID : 96234040902  
Status : Answered  
Chosen Option : 4

Q.9 Which Indian cricketer received the Padma Bhushan in 2018?

- Ans
- 1. Sachin Tendulkar
  - 2. MS Dhoni
  - 3. Saurav Ganguly
  - 4. Virat Kohli

Question ID : 96234010156  
Option 1 ID : 96234040623  
Option 2 ID : 96234040622  
Option 3 ID : 96234040624  
Option 4 ID : 96234040621  
Status : Answered  
Chosen Option : 2

Q.10 Two resistors, one of  $12 \Omega$  and the other of  $24 \Omega$  are connected in parallel. This combination is connected in series with a  $22 \Omega$  resistor and a 12 V battery. The current in the  $12 \Omega$  resistor is \_\_\_\_\_.

- Ans
- 1.  $(6/15) \text{ A}$
  - 2.  $(2/15) \text{ A}$
  - 3.  $(4/15) \text{ A}$
  - 4.  $(8/15) \text{ A}$

Question ID : 96234010191  
Option 1 ID : 96234040763  
Option 2 ID : 96234040761

Option 3 ID : 96234040762  
Option 4 ID : 96234040764  
Status : Answered  
Chosen Option : 1

Q.1 An object starts from rest at  $x = 0$  m and moves with a constant acceleration of  $1.6 \text{ m/s}^2$  along the x-axis. During its journey  
1 from  $x = 12.8$  m to  $x = 20.0$  m, its average velocity will be \_\_\_\_\_.

- Ans
- 1. 7.2 m/s
  - 2. 8.8 m/s
  - 3. 3.6 m/s
  - 4. 2.4 m/s

Question ID : 96234010188  
Option 1 ID : 96234040751  
Option 2 ID : 96234040752  
Option 3 ID : 96234040750  
Option 4 ID : 96234040749  
Status : Not Attempted and Marked For Review  
Chosen Option : --

Q.1 It is mainly due to the gravitational effect of the \_\_\_\_\_ on the rotating earth that the level of water in the sea rises and falls.  
2

- Ans
- 1. Sun
  - 2. Moon
  - 3. Mercury
  - 4. Venus

Question ID : 96234010163  
Option 1 ID : 96234040649  
Option 2 ID : 96234040652  
Option 3 ID : 96234040651  
Option 4 ID : 96234040650  
Status : Answered  
Chosen Option : 1

Q.1 A can do  $\frac{2}{5}$  of a work in 10 days. B can do  $\frac{1}{2}$  of the same work in 10 days. They worked together for 5 days and then A  
3 left. In how many days will B finish the remaining work?

- Ans
- 1. 10
  - 2. 11
  - 3. 9
  - 4. 8

Question ID : 96234010224  
Option 1 ID : 96234040894  
Option 2 ID : 96234040893  
Option 3 ID : 96234040895  
Option 4 ID : 96234040896  
Status : Answered  
Chosen Option : 1

Q.1 Pipes A and B can fill a tank in 12 minutes and 16 minutes respectively. Both A and B are opened for 4 minutes and then A  
4 is closed. How much extra time will B take to fill the tank completely?

- Ans
- 1. 6 minutes
  - 2.  $\frac{20}{3}$  minutes
  - 3. 7 minutes

4.  $\frac{21}{4}$  minutes

Question ID : 96234010217  
Option 1 ID : 96234040867  
Option 2 ID : 96234040866  
Option 3 ID : 96234040865  
Option 4 ID : 96234040868  
Status : Answered  
Chosen Option : 2

Q.1  
5 RK Narayan is famous for his book \_\_\_\_\_.

- Ans  1. The Toom on the Roof  
 2. Two Lives  
 3. Malgudi Days  
 4. A Suitable Boy

Question ID : 96234010157  
Option 1 ID : 96234040625  
Option 2 ID : 96234040626  
Option 3 ID : 96234040627  
Option 4 ID : 96234040628  
Status : Not Answered  
Chosen Option : --

Q.1  
6 A brass rod (thermal conductivity 109 J/s m K) has an area of cross section 0.04 m<sup>2</sup> and length 20 cm. If the two end of the rod are maintained at a temperature difference of 200°C, the rate of heat flow through the rod is \_\_\_\_\_.

- Ans  1. 5.80 kJ/s  
 2. 2.32 kJ/s  
 3. 4.36 kJ/s  
 4. 3.42 kJ/s

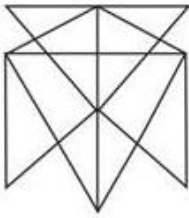
Question ID : 96234010190  
Option 1 ID : 96234040760  
Option 2 ID : 96234040757  
Option 3 ID : 96234040759  
Option 4 ID : 96234040758  
Status : Not Answered  
Chosen Option : --

Q.1  
7 If straight lines are drawn from various points on the contour of an object to meet a plane, the figure obtained on the plane is called the \_\_\_\_\_ of the object.

- Ans  1. animation  
 2. dimensioning  
 3. projection  
 4. development

Question ID : 96234010171  
Option 1 ID : 96234040682  
Option 2 ID : 96234040684  
Option 3 ID : 96234040681  
Option 4 ID : 96234040683  
Status : Not Answered  
Chosen Option : --

Q.1  
8 What is the minimum number of lines required to make the given image?



- Ans  1. 11  
 2. 10  
 3. 12  
 4. 9

Question ID : 96234010243  
Option 1 ID : 96234040971  
Option 2 ID : 96234040970  
Option 3 ID : 96234040972  
Option 4 ID : 96234040969  
Status : Answered  
Chosen Option : 4

Q.1  
9 The ages of X and Y are in the ratio 4 : 7. Three years earlier, the ratio of their ages was 1 : 2. What is the difference between their current ages (Y - X)?

- Ans  1. 3  
 2. 7.5  
 3. 6  
 4. 9

Question ID : 96234010225  
Option 1 ID : 96234040897  
Option 2 ID : 96234040899  
Option 3 ID : 96234040898  
Option 4 ID : 96234040900  
Status : Answered  
Chosen Option : 1

Q.2  
0 An object weighs X units on the earth. If we take the same object to the moon, its weight there will be \_\_\_\_\_.

- Ans  1. more than X  
 2. less than X  
 3. zero  
 4. equal to X

Question ID : 96234010169  
Option 1 ID : 96234040673  
Option 2 ID : 96234040674  
Option 3 ID : 96234040676  
Option 4 ID : 96234040675  
Status : Answered  
Chosen Option : 2

Q.2  
1 If  $x = \sqrt{125} \times \sqrt{30} \times \sqrt{6}$ , then x is equal to:

- Ans  1. 136  
 2. 175

✓ 3. 150

✗ 4. 125

Question ID : 96234010222

Option 1 ID : 96234040888

Option 2 ID : 96234040887

Option 3 ID : 96234040886

Option 4 ID : 96234040885

Status : Answered

Chosen Option : 3

Q.2  
2 The volume of a given amount of water \_\_\_\_\_ between 0° C to 4° C.

Ans ✗ 1. increases

✗ 2. is zero

✗ 3. remains constant

✓ 4. decreases

Question ID : 96234010166

Option 1 ID : 96234040664

Option 2 ID : 96234040663

Option 3 ID : 96234040662

Option 4 ID : 96234040661

Status : Answered

Chosen Option : 1

Q.2  
3 Identify the material having low coefficient of volume expansion

Ans ✓ 1. Iron

✗ 2. Brass

✗ 3. Aluminium

✗ 4. Mercury

Question ID : 96234010176

Option 1 ID : 96234040703

Option 2 ID : 96234040702

Option 3 ID : 96234040704

Option 4 ID : 96234040701

Status : Answered

Chosen Option : 3

Q.2  
4 Name the painter of the famous painting, 'Mahishasura'.

Ans ✗ 1. Amrita Sher-Gil

✗ 2. MF Hussain

✓ 3. Tyeb Mehta

✗ 4. Raja Ravi Verma

Question ID : 96234010154

Option 1 ID : 96234040613

Option 2 ID : 96234040615

Option 3 ID : 96234040616

Option 4 ID : 96234040614

Status : Not Answered

Chosen Option : --

Q.2

5 How many medals did India win in Rio Olympics, 2016?

- Ans
- 1. 4
  - 2. 5
  - 3. 2
  - 4. 3

Question ID : 96234010151  
Option 1 ID : 96234040601  
Option 2 ID : 96234040602  
Option 3 ID : 96234040604  
Option 4 ID : 96234040603  
Status : Answered  
Chosen Option : 2

Q.2 Safety boots or shoes must be worn in designated areas to protect your \_\_\_\_\_ from falling objects.

6

- Ans
- 1. eye
  - 2. ear
  - 3. head
  - 4. feet

Question ID : 96234010180  
Option 1 ID : 96234040718  
Option 2 ID : 96234040717  
Option 3 ID : 96234040720  
Option 4 ID : 96234040719  
Status : Answered  
Chosen Option : 4

Q.2 If a body is NOT homogeneous, then its density is a function of its \_\_\_\_\_.

7

- Ans
- 1. position
  - 2. pressure
  - 3. velocity
  - 4. acceleration

Question ID : 96234010167  
Option 1 ID : 96234040665  
Option 2 ID : 96234040668  
Option 3 ID : 96234040666  
Option 4 ID : 96234040667  
Status : Answered  
Chosen Option : 2

Q.2 Where is the Headquarters of UNESCO located?

8

- Ans
- 1. Geneva
  - 2. Washington DC
  - 3. New York City
  - 4. Paris

Question ID : 96234010158  
Option 1 ID : 96234040629  
Option 2 ID : 96234040631  
Option 3 ID : 96234040630



Option 4 ID : 96234040632  
Status : Answered  
Chosen Option : 1

Q.2 If '+' represents '×', '-' represents '+', '×' represents '-' and '÷' represents '+', then find the value of the following expression.  
9  $9 \times 3 + 6 \div 2 = ?$

- Ans
- 1. 12
  - 2. 16
  - 3. 10
  - 4. 20

Question ID : 96234010231  
Option 1 ID : 96234040922  
Option 2 ID : 96234040923  
Option 3 ID : 96234040921  
Option 4 ID : 96234040924  
Status : Answered  
Chosen Option : 2

Q.3 Given below are two statements, followed by two conclusions, I and II. You have to consider the statements to be true even if they seem to be at variance from commonly known facts. You have to decide which of the given conclusions, if any, follow(s) from the given statements.

Statement 1: No quadrilaterals are polygons.  
Statement 2: All polygons are rhombuses.

Conclusion I: Some rhombuses are quadrilaterals.  
Conclusion II: Some rhombuses are polygons.

- Ans
- 1. Only conclusion I follows
  - 2. Only conclusion II follows
  - 3. Both I and II follow
  - 4. Neither I nor II follows

Question ID : 96234010235  
Option 1 ID : 96234040937  
Option 2 ID : 96234040938  
Option 3 ID : 96234040939  
Option 4 ID : 96234040940  
Status : Answered  
Chosen Option : 2

Q.3  $86^{\circ}\text{F}$  is equal to \_\_\_\_\_ .

- Ans
- 1.  $10^{\circ}\text{C}$
  - 2.  $20^{\circ}\text{C}$
  - 3.  $30^{\circ}\text{C}$
  - 4.  $34^{\circ}\text{C}$

Question ID : 96234010177  
Option 1 ID : 96234040705  
Option 2 ID : 96234040706  
Option 3 ID : 96234040707  
Option 4 ID : 96234040708  
Status : Not Answered  
Chosen Option : --

Q.3 A got ₹80 as his share of profit where the total profit was ₹240 and the ratio of profit distribution between A and B was x : 2. What is the value of x?

- Ans
- 1. 4
  - 2. 2

- ✓ 3. 1  
✗ 4. 5

Question ID : 96234010219  
Option 1 ID : 96234040875  
Option 2 ID : 96234040874  
Option 3 ID : 96234040873  
Option 4 ID : 96234040876  
Status : Answered  
Chosen Option : 3

Q.3 \_\_\_\_\_ protection must be worn whenever noise levels exceed the noise exposure standard.

- Ans ✗ 1. Foot  
✓ 2. Hearing  
✗ 3. Eye  
✗ 4. Head

Question ID : 96234010181  
Option 1 ID : 96234040723  
Option 2 ID : 96234040721  
Option 3 ID : 96234040722  
Option 4 ID : 96234040724  
Status : Answered  
Chosen Option : 2

Q.3 Kuchipudi has its roots in which Indian State?

- Ans ✗ 1. Himachal Pradesh  
✓ 2. Andhra Pradesh  
✗ 3. Kerala  
✗ 4. Arunachal Pradesh

Question ID : 96234010160  
Option 1 ID : 96234040640  
Option 2 ID : 96234040638  
Option 3 ID : 96234040639  
Option 4 ID : 96234040637  
Status : Answered  
Chosen Option : 3

Q.3 Name the scientist who discovered bacteria.

- Ans ✗ 1. Eugen Goldstein  
✗ 2. James Chadwick  
✓ 3. AV Leeuwenhoek  
✗ 4. Robert Koch

Question ID : 96234010153  
Option 1 ID : 96234040611  
Option 2 ID : 96234040610  
Option 3 ID : 96234040612  
Option 4 ID : 96234040609  
Status : Answered  
Chosen Option : 2

Q.3 Unscramble the letters in the words given below and find the odd word out.

6

- Ans
- 1. FLOW
  - 2. WCO
  - 3. ILNO
  - 4. ERTIG

Question ID : 96234010237  
Option 1 ID : 96234040948  
Option 2 ID : 96234040947  
Option 3 ID : 96234040945  
Option 4 ID : 96234040946  
Status : Answered  
Chosen Option : 4

Q.3  
7 What is the unit's digit in  $3^{66} \times 6^{41} \times 7^{53}$

- Ans
- 1. 3
  - 2. 8
  - 3. 6
  - 4. 7

Question ID : 96234010202  
Option 1 ID : 96234040808  
Option 2 ID : 96234040805  
Option 3 ID : 96234040807  
Option 4 ID : 96234040806  
Status : Answered  
Chosen Option : 2

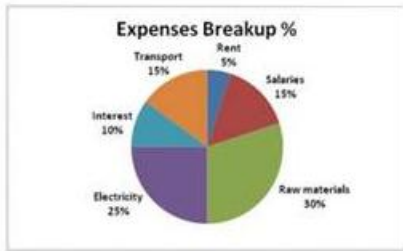
Q.3  
8 A motorcycle travelled 1000 m at 36 km/hr. Find the time (in seconds) taken by the motorcycle to cover this distance.

- Ans
- 1. 300
  - 2. 100
  - 3. 400
  - 4. 200

Question ID : 96234010195  
Option 1 ID : 96234040779  
Option 2 ID : 96234040777  
Option 3 ID : 96234040780  
Option 4 ID : 96234040778  
Status : Answered  
Chosen Option : 2

Q.3  
9

The pie chart shows the breakup in percentages of the various expenses of a Company. Study the diagram and answer the following question.



What is the interest expense if total expenses are ₹25,000 approximately?

- Ans
- 1. ₹9,000
  - 2. ₹1,800
  - 3. ₹2,500
  - 4. ₹5,000

Question ID : 96234010241  
Option 1 ID : 96234040963  
Option 2 ID : 96234040964  
Option 3 ID : 96234040961  
Option 4 ID : 96234040962  
Status : Answered  
Chosen Option : 3

Q.4 In a code language, 295 means 'water is liquid', 549 means 'oil is liquid' and 824 means 'oil on water'. Find the code for 'on'.

- 0
- Ans
- 1. 8
  - 2. 2
  - 3. 4
  - 4. 5

Question ID : 96234010230  
Option 1 ID : 96234040920  
Option 2 ID : 96234040918  
Option 3 ID : 96234040917  
Option 4 ID : 96234040919  
Status : Answered  
Chosen Option : 1

Q.4<sub>1</sub> Reflection of point (-2, -6) on the Y-axis is:

- Ans
- 1. (-2, 6)
  - 2. (2, 6)
  - 3. (2, -6)
  - 4. (-6, -2)

Question ID : 96234010213  
Option 1 ID : 96234040849  
Option 2 ID : 96234040850  
Option 3 ID : 96234040852  
Option 4 ID : 96234040851  
Status : Answered

Chosen Option : 3

Q.4  
2 Molar specific heat capacity of a substance is \_\_\_\_\_.

Ans

1.  $\mu \left( \frac{\Delta Q}{\Delta T} \right)$

2.  $\left( \frac{1}{\mu} \right) \left( \frac{\Delta T}{\Delta Q} \right)$

3.  $\mu \left( \frac{\Delta T}{\Delta Q} \right)$

4.  $\left( \frac{1}{\mu} \right) \left( \frac{\Delta Q}{\Delta T} \right)$

Question ID : 96234010178

Option 1 ID : 96234040709

Option 2 ID : 96234040710

Option 3 ID : 96234040712

Option 4 ID : 96234040711

Status : Answered

Chosen Option : 1

Q.4  
3 Velocity ratio of simple machine is the ratio of distance travelled by the \_\_\_\_\_ to the distance travelled by the \_\_\_\_\_ in the machine.

Ans

1. effort; load

2. effort; effort

3. load; load

4. load; effort

Question ID : 96234010184

Option 1 ID : 96234040733

Option 2 ID : 96234040735

Option 3 ID : 96234040736

Option 4 ID : 96234040734

Status : Answered

Chosen Option : 1

Q.4  
4 A machine was bought for ₹1,500 and a repairing charge of ₹100 was paid afterwards. At what price should it be sold to gain a profit of 25%?

Ans

1. ₹2,000

2. ₹1,960

3. ₹1,920

4. ₹2,040

Question ID : 96234010205

Option 1 ID : 96234040819

Option 2 ID : 96234040818

Option 3 ID : 96234040817

Option 4 ID : 96234040820

Status : Answered

Chosen Option : 1

Q.4  
5 What is 80% of 50% of 90?

Ans

1. 34

2. 32

✓ 3. 36

✗ 4. 30

Question ID : 96234010220  
Option 1 ID : 96234040879  
Option 2 ID : 96234040878  
Option 3 ID : 96234040880  
Option 4 ID : 96234040877  
Status : Answered  
Chosen Option : 3

Q.4  
6 Which two signs should be interchanged to make the given equation correct?

$$9 \div 3 + 8 \times 2 - 15 = 2$$

Ans ✗ 1.  $\div$  and -

✗ 2. + and  $\times$

✓ 3. + and -

✗ 4.  $\times$  and -

Question ID : 96234010232  
Option 1 ID : 96234040927  
Option 2 ID : 96234040925  
Option 3 ID : 96234040926  
Option 4 ID : 96234040928  
Status : Answered  
Chosen Option : 2

Q.4  
7 The effort in a class 1 lever is in \_\_\_\_\_ direction(s).

Ans ✗ 1. multiple

✓ 2. one

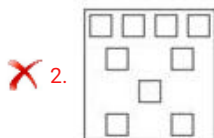
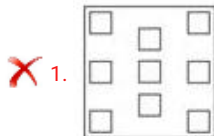
✗ 3. two

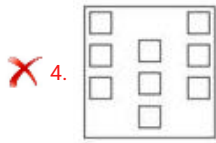
✗ 4. three

Question ID : 96234010187  
Option 1 ID : 96234040745  
Option 2 ID : 96234040748  
Option 3 ID : 96234040746  
Option 4 ID : 96234040747  
Status : Not Answered  
Chosen Option : --

Q.4  
8 Choose the figure that is different from the rest.

Ans





Question ID : 96234010245  
 Option 1 ID : 96234040978  
 Option 2 ID : 96234040979  
 Option 3 ID : 96234040980  
 Option 4 ID : 96234040977  
 Status : Answered  
 Chosen Option : 2

**Q.4** Two resistors of  $2\ \Omega$  and  $6\ \Omega$  are connected in series and this combination is connected across a  $12\ \text{V}$  battery. Find the current in the  $6\ \Omega$  resistor.

- Ans**
- X** 1.  $2.5\ \text{A}$
  - X** 2.  $3.5\ \text{A}$
  - X** 3.  $0.5\ \text{A}$
  - ✓** 4.  $1.5\ \text{A}$

Question ID : 96234010199  
 Option 1 ID : 96234040795  
 Option 2 ID : 96234040796  
 Option 3 ID : 96234040793  
 Option 4 ID : 96234040794  
 Status : Answered  
 Chosen Option : 4

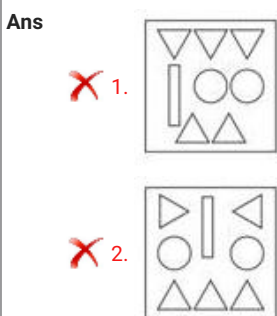
**Q.5** Given below are some letters, that each of these letters has a corresponding number. Select the combination of numbers from the options so that the jumbled letters arranged accordingly will form a meaningful English word.

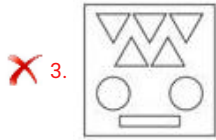
H T R U O A  
 1 2 3 4 5 6

- Ans**
- X** 1. 2,1,5,3,4,6
  - X** 2. 1,6,2,4,5,3
  - X** 3. 3,4,5,2,1,6
  - ✓** 4. 6,4,2,1,5,3

Question ID : 96234010236  
 Option 1 ID : 96234040942  
 Option 2 ID : 96234040941  
 Option 3 ID : 96234040943  
 Option 4 ID : 96234040944  
 Status : Answered  
 Chosen Option : 4

**Q.5** Choose the figure that is different from the rest.





Question ID : 96234010246  
Option 1 ID : 96234040984  
Option 2 ID : 96234040983  
Option 3 ID : 96234040981  
Option 4 ID : 96234040982  
Status : Answered  
Chosen Option : 4

Q.5  
2 What is the median of 8, 5, 7, 9, 11, 6, 10 ?

- Ans
- 1. 10
  - 2. 7
  - 3. 9
  - 4. 8

Question ID : 96234010221  
Option 1 ID : 96234040884  
Option 2 ID : 96234040881  
Option 3 ID : 96234040883  
Option 4 ID : 96234040882  
Status : Answered  
Chosen Option : 4

Q.5  
3 A sum of ₹10,000 amounts to ₹11,449 in 2 years, when the interest is compounded annually. The interest rate percent per annum is:

- Ans
- 1. 6%
  - 2. 7%
  - 3. 1%
  - 4. 8%

Question ID : 96234010210  
Option 1 ID : 96234040837  
Option 2 ID : 96234040840  
Option 3 ID : 96234040839  
Option 4 ID : 96234040838  
Status : Answered  
Chosen Option : 2

Q.5  
4 Which one of these is a harvest festival?

- Ans
- 1. Onam
  - 2. Deepawali
  - 3. Teej
  - 4. Janmashtami

Question ID : 96234010152  
Option 1 ID : 96234040606  
Option 2 ID : 96234040607



Option 3 ID : 96234040608  
Option 4 ID : 96234040605  
Status : Answered  
Chosen Option : 1

Q.5  
5 A car covers 400 m in 20 seconds. Find the average speed (in km/hr) of the car.

- Ans
- 1. 36
  - 2. 124
  - 3. 72
  - 4. 108

Question ID : 96234010194  
Option 1 ID : 96234040773  
Option 2 ID : 96234040776  
Option 3 ID : 96234040774  
Option 4 ID : 96234040775  
Status : Answered  
Chosen Option : 3

Q.5  
6 A sum of ₹2,000 was spent in buying a pair of trousers. The sum spent was  $\frac{2}{5}$ th of the total money Shashi had with her. How much was the total money she had?

- Ans
- 1. ₹5,000
  - 2. ₹4,750
  - 3. ₹4,000
  - 4. ₹4,250

Question ID : 96234010206  
Option 1 ID : 96234040824  
Option 2 ID : 96234040823  
Option 3 ID : 96234040821  
Option 4 ID : 96234040822  
Status : Answered  
Chosen Option : 1

Q.5  
7 Two resistors of  $10\ \Omega$  and  $20\ \Omega$  are connected in series and this combination is connected across a 30 V supply voltage. Find the voltage across the  $10\ \Omega$  resistor.

- Ans
- 1. 15 V
  - 2. 10 V
  - 3. 5 V
  - 4. 20 V

Question ID : 96234010198  
Option 1 ID : 96234040792  
Option 2 ID : 96234040790  
Option 3 ID : 96234040789  
Option 4 ID : 96234040791  
Status : Answered  
Chosen Option : 4

Q.5  
8 Given below is a question, followed by two arguments, I and II. You have to decide which of the given arguments, if any, is a strong argument, with respect to the question.

Question: Should advertisements be banned on television?

Argument I : Yes, advertisements are immoral.

Argument II : No, advertisements bring in revenue which helps reduce cost for viewers.

- Ans
- 1. Neither I nor II is strong.
  - 2. Only argument II is strong.

3. Both I and II are strong.  
 4. Only argument I is strong.

Question ID : 96234010250  
Option 1 ID : 96234041000  
Option 2 ID : 96234040998  
Option 3 ID : 96234040999  
Option 4 ID : 96234040997  
Status : Answered  
Chosen Option : 3

Q.5 A \_\_\_\_\_ is a theoretical exact plane, axis or point location that GD & T or dimensional tolerances are referenced to.

- Ans  1. frame  
 2. datum  
 3. flange  
 4. section

Question ID : 96234010170  
Option 1 ID : 96234040680  
Option 2 ID : 96234040677  
Option 3 ID : 96234040679  
Option 4 ID : 96234040678  
Status : Not Answered  
Chosen Option : --

Q.6 I, J, K and L are sitting in a row. L and I are sitting next to each other and I and K are at the ends. Who is sitting next to J?

- Ans  1. Only L  
 2. Only K  
 3. K and L  
 4. L and I

Question ID : 96234010244  
Option 1 ID : 96234040974  
Option 2 ID : 96234040976  
Option 3 ID : 96234040975  
Option 4 ID : 96234040973  
Status : Answered  
Chosen Option : 3

Q.6 Which of the following options does not have an SI base unit?

- Ans  1. Frequency  
 2. Luminous intensity  
 3. Electric current  
 4. Amount of substance

Question ID : 96234010161  
Option 1 ID : 96234040644  
Option 2 ID : 96234040642  
Option 3 ID : 96234040643  
Option 4 ID : 96234040641  
Status : Answered  
Chosen Option : 4

Q.6  
2 Substances that are broken down by biological processes are said to be \_\_\_\_\_.

- Ans
- 1. reusable
  - 2. non-reusable
  - 3. biodegradable
  - 4. non-biodegradable

Question ID : 96234010164  
Option 1 ID : 96234040654  
Option 2 ID : 96234040656  
Option 3 ID : 96234040655  
Option 4 ID : 96234040653  
Status : Answered  
Chosen Option : 1

Q.6  
3 A source of voltage  $V$  maintains a current  $i$  in a circuit. The energy supplied to the circuit by the source in time  $t$  is \_\_\_\_\_.

- Ans
- 1.  $Vi/t$
  - 2.  $Vit$
  - 3.  $V/it$
  - 4.  $1/Vit$

Question ID : 96234010196  
Option 1 ID : 96234040783  
Option 2 ID : 96234040781  
Option 3 ID : 96234040782  
Option 4 ID : 96234040784  
Status : Answered  
Chosen Option : 1

Q.6  
4 Who was the first governor of the Reserve Bank of India?

- Ans
- 1. KR Puri
  - 2. HVR Iyengar
  - 3. Sir James Braid Taylor
  - 4. Sir Osborne A Smith

Question ID : 96234010159  
Option 1 ID : 96234040633  
Option 2 ID : 96234040636  
Option 3 ID : 96234040635  
Option 4 ID : 96234040634  
Status : Answered  
Chosen Option : 2

Q.6  
5 If the width of a standard engineering drawing sheet is 841 mm, then its length would be \_\_\_\_\_ mm.

- Ans
- 1. 1250
  - 2. 1000
  - 3. 1189
  - 4. 1216

Question ID : 96234010173  
Option 1 ID : 96234040691  
Option 2 ID : 96234040689  
Option 3 ID : 96234040692

Option 4 ID : 96234040690  
Status : Answered  
Chosen Option : 3

Q.6 A series is given, with one term missing. Choose the correct alternative from the given ones that will complete the series.  
6 OOOOXX, OOOOXX, OOOXXX, OOXXXX, ?

- Ans
- 1. OOXXXXXX
  - 2. OXXXXXX
  - 3. XXXXXXXX
  - 4. OOXXXX

Question ID : 96234010228  
Option 1 ID : 96234040910  
Option 2 ID : 96234040909  
Option 3 ID : 96234040911  
Option 4 ID : 96234040912  
Status : Answered  
Chosen Option : 2

Q.6 In angular measurements, one radian is equivalent to \_\_\_\_\_ degrees (approximately).  
7

- Ans
- 1. 57.27
  - 2. 65.27
  - 3. 90
  - 4. 180

Question ID : 96234010162  
Option 1 ID : 96234040647  
Option 2 ID : 96234040648  
Option 3 ID : 96234040646  
Option 4 ID : 96234040645  
Status : Answered  
Chosen Option : 3

Q.6 A software program that has been developed to harm other computers is called a/an \_\_\_\_\_.  
8

- Ans
- 1. LAN
  - 2. operating system
  - 3. malware
  - 4. server

Question ID : 96234010182  
Option 1 ID : 96234040728  
Option 2 ID : 96234040726  
Option 3 ID : 96234040725  
Option 4 ID : 96234040727  
Status : Answered  
Chosen Option : 3

Q.6 A 4-digit number  $1xy7$  is divisible by 11. What is the value of  $x-y$ ?  
9

- Ans
- 1. - 6
  - 2. - 2
  - 3. - 8
  - 4. - 4

Question ID : 96234010201

Option 1 ID : 96234040801  
Option 2 ID : 96234040803  
Option 3 ID : 96234040804  
Option 4 ID : 96234040802  
Status : Answered  
Chosen Option : 1

Q.7  
0 Identify the material having high coefficient of volume expansion.

- Ans
- 1. Brass
  - 2. Water
  - 3. Glass
  - 4. Alcohol

Question ID : 96234010175  
Option 1 ID : 96234040700  
Option 2 ID : 96234040698  
Option 3 ID : 96234040699  
Option 4 ID : 96234040697  
Status : Answered  
Chosen Option : 4

Q.7  
1 If  $\sin \Theta = 15/17$ , then  $\cot \Theta = ?$

- Ans
- 1.  $\frac{8}{17}$
  - 2.  $\frac{15}{8}$
  - 3.  $\frac{8}{15}$
  - 4.  $\frac{17}{15}$

Question ID : 96234010216  
Option 1 ID : 96234040863  
Option 2 ID : 96234040861  
Option 3 ID : 96234040862  
Option 4 ID : 96234040864  
Status : Not Answered  
Chosen Option : --

Q.7  
2 The Ajanta Caves in Maharashtra feature paintings and sculptures that depict \_\_\_\_\_ tales?

- Ans
- 1. Islamic
  - 2. Arabic
  - 3. Maratha
  - 4. Buddhist

Question ID : 96234010155  
Option 1 ID : 96234040619  
Option 2 ID : 96234040620  
Option 3 ID : 96234040617  
Option 4 ID : 96234040618  
Status : Not Answered  
Chosen Option : --

Q.7

3 JPEG stands for \_\_\_\_\_.

- Ans
- 1. Joint Program Experimental Group
  - 2. Joint Photographic Experts Group
  - 3. Joint Program Experts Group
  - 4. Joint Program Executing Group

Question ID : 96234010183  
Option 1 ID : 96234040731  
Option 2 ID : 96234040730  
Option 3 ID : 96234040729  
Option 4 ID : 96234040732  
Status : Answered  
Chosen Option : 4

Q.7 A salesperson starts from his office and drives 2 km east, then turns north and drives 7 km, then turns to his right and drives 6 km, then turns south and drives 7 km. Where is he now with respect to his starting position?

- Ans
- 1. 8 km east
  - 2. 8 km west
  - 3. 4 km west
  - 4. 4 km east

Question ID : 96234010247  
Option 1 ID : 96234040985  
Option 2 ID : 96234040986  
Option 3 ID : 96234040988  
Option 4 ID : 96234040987  
Status : Answered  
Chosen Option : 3

Q.7 A series is given, with one number missing. Choose the correct alternative from the given ones that will complete the series.

5  
1.14, 1.28, 1.42, ?, 1.70, 1.84

- Ans
- 1. 1.54
  - 2. 1.62
  - 3. 1.56
  - 4. 1.68

Question ID : 96234010229  
Option 1 ID : 96234040915  
Option 2 ID : 96234040913  
Option 3 ID : 96234040914  
Option 4 ID : 96234040916  
Status : Answered  
Chosen Option : 3

Q.7 A cylindrical wire of length  $L$  and radius  $r$  has a resistance of  $R$ . The resistance of another wire of the same material but thrice its length and one-third its radius will be \_\_\_\_\_.

- Ans
- 1.  $3R$
  - 2.  $9R$
  - 3.  $27R$
  - 4.  $R$

Question ID : 96234010192  
Option 1 ID : 96234040767  
Option 2 ID : 96234040766  
Option 3 ID : 96234040765

Option 4 ID : 96234040768  
Status : Answered  
Chosen Option : 4

Q.7  
7 The abbreviation AC in an engineering drawing stands for \_\_\_\_\_.

- Ans
- 1. Across Corners
  - 2. Attached Circle
  - 3. Air Conditioning
  - 4. Aerial Cut

Question ID : 96234010172  
Option 1 ID : 96234040685  
Option 2 ID : 96234040688  
Option 3 ID : 96234040686  
Option 4 ID : 96234040687  
Status : Answered  
Chosen Option : 1

Q.7  
8 If  $5050 \times 0.5x = 25250$ , then  $2505 \div x^2 = ?$

- Ans
- 1. 250.5
  - 2. 2.505
  - 3. 25.05
  - 4. 0.2505

Question ID : 96234010203  
Option 1 ID : 96234040812  
Option 2 ID : 96234040809  
Option 3 ID : 96234040810  
Option 4 ID : 96234040811  
Status : Answered  
Chosen Option : 3

Q.7  
9 An airplane flies at the speed of 50 m/s. How much distance (in km) will it cover in a flight of 5 hours?

- Ans
- 1. 850
  - 2. 900
  - 3. 895
  - 4. 880

Question ID : 96234010209  
Option 1 ID : 96234040833  
Option 2 ID : 96234040836  
Option 3 ID : 96234040835  
Option 4 ID : 96234040834  
Status : Answered  
Chosen Option : 2

Q.8  
0 Select the option that is related to the third number in the same way as the second number is related to the first number.

$-9/11 : 11/9 :: 13/2 : ?$

- Ans
- 1.  $-7/3$
  - 2.  $2/13$
  - 3.  $3/7$
  - 4.  $-2/13$

Question ID : 96234010227  
Option 1 ID : 96234040907  
Option 2 ID : 96234040905  
Option 3 ID : 96234040906  
Option 4 ID : 96234040908  
Status : Not Answered  
Chosen Option : --

Q.8  
1 If a body has a specific gravity of less than 1, then it will float in/on \_\_\_\_\_.

- Ans  1. mercury  
 2. water  
 3. air  
 4. liquids

Question ID : 96234010168  
Option 1 ID : 96234040669  
Option 2 ID : 96234040671  
Option 3 ID : 96234040670  
Option 4 ID : 96234040672  
Status : Not Answered  
Chosen Option : --

Q.8  
2 What is the distance between the points (4, 3) and (3, -2)?

- Ans  1. 5  
 2.  $\sqrt{24}$   
 3. 6  
 4.  $\sqrt{26}$

Question ID : 96234010214  
Option 1 ID : 96234040855  
Option 2 ID : 96234040854  
Option 3 ID : 96234040856  
Option 4 ID : 96234040853  
Status : Answered  
Chosen Option : 3

Q.8  
3 ఒక సంఖ్య 50 కంటే చాలా ఎక్కువ మరియు 84 కంటే అంతే తక్కువ. అయితే ఆ సంఖ్య ఏమిటి?

- Ans  1. 65  
 2. 67  
 3. 66  
 4. 68

Question ID : 96234010211  
Option 1 ID : 96234040841  
Option 2 ID : 96234040843  
Option 3 ID : 96234040842  
Option 4 ID : 96234040844  
Status : Answered  
Chosen Option : 2

Q.8  
4 ఒక వస్తువు ₹12,000లకు విక్రయించబడింది. దానిపై 15% డిస్కాంట్ ఇవ్వబడినప్పుడు, దానిపై 2% లాభం వచ్చింది. వస్తువు కొన్నవల ఎంత?

- Ans  1. ₹10,200



- ✓ 2. ₹10,000
- ✗ 3. ₹10,800
- ✗ 4. ₹11,000

Question ID : 96234010204  
 Option 1 ID : 96234040816  
 Option 2 ID : 96234040814  
 Option 3 ID : 96234040815  
 Option 4 ID : 96234040813  
 Status : Answered  
 Chosen Option : 2

Q.8 5 A and B can do a work in 15 days, B and C can do the work in 20 days and A and C can do the work in 10 days. In how many days will they together complete the work?

- Ans
- ✓ 1. 9.23 days
  - ✗ 2. 10.71 days
  - ✗ 3. 10.91 days
  - ✗ 4. 10.67 days

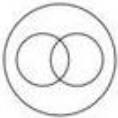
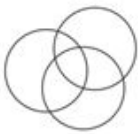

Question ID : 96234010223  
 Option 1 ID : 96234040891  
 Option 2 ID : 96234040890  
 Option 3 ID : 96234040892  
 Option 4 ID : 96234040889  
 Status : Answered  
 Chosen Option : 1

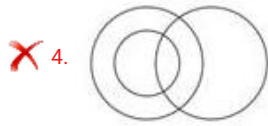
Q.8 6 If G + H means G is daughter of H, G - H means G is sister H and G \* H means G is husband of H, which of the following shows that I is the daughter of H?

- Ans
- ✗ 1. I - J \* F + H
  - ✗ 2. I + J - F \* H
  - ✗ 3. I \* J - F + H
  - ✓ 4. I - J + F \* H

Question ID : 96234010234  
 Option 1 ID : 96234040936  
 Option 2 ID : 96234040935  
 Option 3 ID : 96234040933  
 Option 4 ID : 96234040934  
 Status : Answered  
 Chosen Option : 4

Q.8 7 Which of the following Venn diagrams best represents the relationship between Indians, doctors and women?

- Ans
- ✗ 1. 
  - ✓ 2. 
  - ✗ 3. 



Question ID : 96234010239  
 Option 1 ID : 96234040954  
 Option 2 ID : 96234040955  
 Option 3 ID : 96234040953  
 Option 4 ID : 96234040956  
 Status : Answered  
 Chosen Option : 2

Q.8 What is the curved surface area of a hemisphere whose radius is 7 cm? (take  $\pi = 22/7$ )

- 8  
 Ans ✓ 1. 308 cm<sup>2</sup>  
 ✗ 2. 154 cm<sup>2</sup>  
 ✗ 3. 924 cm<sup>2</sup>  
 ✗ 4. 616 cm<sup>2</sup>

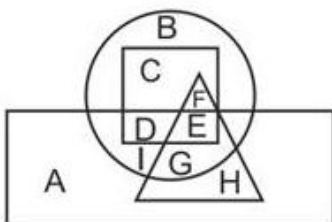
Question ID : 96234010208  
 Option 1 ID : 96234040830  
 Option 2 ID : 96234040832  
 Option 3 ID : 96234040831  
 Option 4 ID : 96234040829  
 Status : Answered  
 Chosen Option : 1

Q.8 In engineering drawing, the letters LH signifies \_\_\_\_\_.

- 9  
 Ans ✓ 1. Left Hand  
 ✗ 2. Limit of Height  
 ✗ 3. Low Heat  
 ✗ 4. Level Hide

Question ID : 96234010174  
 Option 1 ID : 96234040696  
 Option 2 ID : 96234040695  
 Option 3 ID : 96234040693  
 Option 4 ID : 96234040694  
 Status : Answered  
 Chosen Option : 2

Q.9 In the following figure, square represents Chinese, triangle represents dancers, circle represents male and rectangle represents architects. Which set of letters represents dancers who are male?



- 0  
 Ans ✗ 1. DEIG

2. IGH  
 3. DEF  
 4. GEF

Question ID : 96234010238  
Option 1 ID : 96234040949  
Option 2 ID : 96234040952  
Option 3 ID : 96234040951  
Option 4 ID : 96234040950  
Status : Answered  
Chosen Option : 4

Q.9 <sub>1</sub> If a machine overcomes a load 'L' and the distance travelled by the load is 'Ld', the work done by the load will be \_\_\_\_\_.

- Ans  1.  $L \times Ld$   
 2.  $\frac{L}{Ld}$   
 3.  $\frac{Ld}{L}$   
 4.  $\frac{1}{L \times Ld}$

Question ID : 96234010185  
Option 1 ID : 96234040740  
Option 2 ID : 96234040737  
Option 3 ID : 96234040739  
Option 4 ID : 96234040738  
Status : Answered  
Chosen Option : 1

Q.9 <sub>2</sub> Find the odd group of letters from the given alternatives.

- Ans  1. PQR  
 2. HJL  
 3. VWX  
 4. EFG

Question ID : 96234010242  
Option 1 ID : 96234040965  
Option 2 ID : 96234040966  
Option 3 ID : 96234040967  
Option 4 ID : 96234040968  
Status : Answered  
Chosen Option : 2

Q.9 <sub>3</sub> Tap M and N can together fill a cistern in 48/13 minutes. N alone can fill it in 6 minutes. How much time will M alone take to fill the cistern?

- Ans  1. 8.6 minutes  
 2. 9 minutes  
 3. 9.6 minutes  
 4. 9.4 minutes

Question ID : 96234010218  
Option 1 ID : 96234040872  
Option 2 ID : 96234040871  
Option 3 ID : 96234040869  
Option 4 ID : 96234040870  
Status : Answered

Chosen Option : 3

Q.9  
4 A body starts from rest. Its displacement is proportional to \_\_\_\_\_ when its acceleration is constant.

- Ans
- 1. work
  - 2. time squared
  - 3. velocity
  - 4. time

Question ID : 96234010193

Option 1 ID : 96234040771

Option 2 ID : 96234040769

Option 3 ID : 96234040772

Option 4 ID : 96234040770

Status : Answered

Chosen Option : 2

Q.9  
5 You are given a question and two statements. Identify which of the statements is/are necessary/sufficient to answer the question.

Question: What was the discount percent offered on the soap by the store?

Statements:

- I) The store is giving 1 soap free on purchase of three.  
II) ₹10 discount is offered on purchase of soap worth ₹36.

- Ans
- 1. II alone is sufficient while I alone is not sufficient
  - 2. I alone is sufficient while II alone is not sufficient
  - 3. Either I or II is sufficient
  - 4. Neither I nor II is sufficient

Question ID : 96234010240

Option 1 ID : 96234040958

Option 2 ID : 96234040957

Option 3 ID : 96234040959

Option 4 ID : 96234040960

Status : Answered

Chosen Option : 3

Q.9  
6 ಪೊಡವು L ಮರಿಯು ವ್ಯಾಸಾರ್ಗಂ r ಗಲ ಒಕ ತಿಗ ನಿರ್ದಂ R. ದಾನಿ ಪೊಡವುಲೆ ಸಗಂ ಮರಿಯು ವ್ಯಾಸಾರ್ಗಂ ಸಗಂ ಒನ್ನ ಅದೆ ವದಾರ್ಗಂ ಗಲ ಒಕ ತಿಗ ಯುಕ್ತ ನಿರ್ದಂ \_\_\_\_\_ ಒಂಟುಂದಿ.

- Ans
- 1. 4R
  - 2. R
  - 3. R/2
  - 4. 2R

Question ID : 96234010197

Option 1 ID : 96234040788

Option 2 ID : 96234040786

Option 3 ID : 96234040785

Option 4 ID : 96234040787

Status : Answered

Chosen Option : 3

Q.9  
7 Greater the value of \_\_\_\_\_ of a material, the more rapidly it will conduct heat.

- Ans
- 1. latent heat
  - 2. melting point
  - 3. thermal conductivity

**X** 4. regelation

Question ID : 96234010179

Option 1 ID : 96234040715

Option 2 ID : 96234040713

Option 3 ID : 96234040714

Option 4 ID : 96234040716

Status : Answered

Chosen Option : 2

Q.9 The effort applied to move a load is 15 units and the machine advantage is observed to be 3. Find the load.

8

Ans **X** 1. 3 units

**X** 2. 5 units

**X** 3. 15 units

**✓** 4. 45 units

Question ID : 96234010186

Option 1 ID : 96234040744

Option 2 ID : 96234040742

Option 3 ID : 96234040743

Option 4 ID : 96234040741

Status : Answered

Chosen Option : 4

Q.9 If C S D means C is daughter of D, C & D means C is mother of D and C % D means C is son of D, then what does W S X & Y % Z mean?

9

Ans **✓** 1. Z is father of W

**X** 2. Z is wife of W

**X** 3. Z is mother of W

**X** 4. Z is daughter of W

Question ID : 96234010233

Option 1 ID : 96234040930

Option 2 ID : 96234040929

Option 3 ID : 96234040931

Option 4 ID : 96234040932

Status : Answered

Chosen Option : 1

Q.1  $\sec 45^\circ - \tan 60^\circ = ?$

00

Ans **X** 1.  $\frac{\sqrt{3}}{2}$

**X** 2.  $\sqrt{3} + \sqrt{2}$

**✓** 3.  $-\sqrt{3} + \sqrt{2}$

**X** 4.  $-\sqrt{3} - \sqrt{2}$

Question ID : 96234010215

Option 1 ID : 96234040859

Option 2 ID : 96234040857

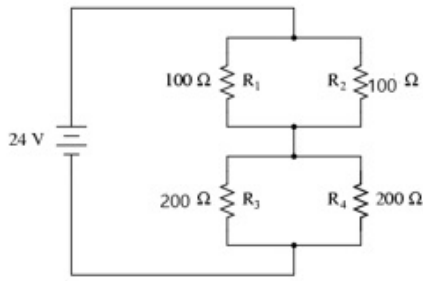
Option 3 ID : 96234040858

Option 4 ID : 96234040860

Status : Answered

Chosen Option : 3

Q.1 What is the amount of current is flowing through the resistor R1?



- Ans
- 1. 0.8 A
  - 2. 80 mA
  - 3. 160 mA
  - 4. 10 mA

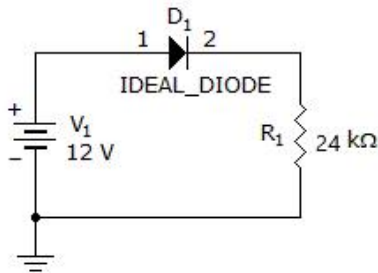
Question ID : 96234010251  
Option 1 ID : 96234041004  
Option 2 ID : 96234041002  
Option 3 ID : 96234041003  
Option 4 ID : 96234041001  
Status : Not Answered  
Chosen Option : --

Q.2 Which of the following insulating materials has the lowest dielectric losses?

- Ans
- 1. EPR
  - 2. PE (Polyethylene)
  - 3. XLPE
  - 4. PVC

Question ID : 96234010264  
Option 1 ID : 96234041056  
Option 2 ID : 96234041053  
Option 3 ID : 96234041055  
Option 4 ID : 96234041054  
Status : Answered  
Chosen Option : 3

Q.3



What current is flowing through the diode?

- Ans
- 1. 0.5 mA
  - 2. 5 mA
  - 3. 2 mA
  - 4. 0.5 A

Question ID : 96234010316

Option 1 ID : 96234041263

Option 2 ID : 96234041262

Option 3 ID : 96234041261

Option 4 ID : 96234041264

Status : Answered

Chosen Option : 4

Q.4 Which among the following DC generators produces constant output voltage at all loads?

- Ans
- 1. Shunt generator
  - 2. Short shunt compound generator
  - 3. Level compound generator
  - 4. Series generator

Question ID : 96234010325

Option 1 ID : 96234041299

Option 2 ID : 96234041297

Option 3 ID : 96234041300

Option 4 ID : 96234041298

Status : Answered

Chosen Option : 1

Q.5 Which of the following components is used for collecting current from the commutator and supply it to the external load?

- Ans
- 1. Armature
  - 2. Magnet
  - 3. Yoke
  - 4. Brushes

Question ID : 96234010321

Option 1 ID : 96234041283

Option 2 ID : 96234041284

Option 3 ID : 96234041282

Option 4 ID : 96234041281

Status : Answered

Chosen Option : 4

Q.6 In ideal case, what should be the charging current for a 100 Ah battery?

- Ans
- 1. 10 A
  - 2. 20 A
  - 3. 8 A
  - 4. 5 A

Question ID : 96234010311

Option 1 ID : 96234041241

Option 2 ID : 96234041243

Option 3 ID : 96234041244

Option 4 ID : 96234041242

Status : Not Answered

Chosen Option : --

Q.7 Average resistance of human body is approximately:

- Ans
- 1. 500  $\Omega$
  - 2. 2000  $\Omega$

3. 1000  $\Omega$   
 4. 3000  $\Omega$

Question ID : 96234010313  
Option 1 ID : 96234041249  
Option 2 ID : 96234041250  
Option 3 ID : 96234041251  
Option 4 ID : 96234041252  
Status : Answered  
Chosen Option : 3

Q.8 Which of the following has a NEGATIVE temperature coefficient of resistance?

- Ans  1. Graphite  
 2. Aluminum  
 3. Iron  
 4. Copper

Question ID : 96234010290  
Option 1 ID : 96234041158  
Option 2 ID : 96234041159  
Option 3 ID : 96234041157  
Option 4 ID : 96234041160  
Status : Answered  
Chosen Option : 1

Q.9 Three bulbs of 40 W, 60 W & 100 W are connected in series across 220 V AC source. Which bulb will glow brighter?

- Ans  1. 100 W bulb  
 2. 60 W bulb  
 3. 40 W bulb  
 4. All bulbs will be equally bright

Question ID : 96234010253  
Option 1 ID : 96234041010  
Option 2 ID : 96234041012  
Option 3 ID : 96234041011  
Option 4 ID : 96234041009  
Status : Answered  
Chosen Option : 3

Q.1  
0 In which of the following regions of a cable, voltage stress is maximum?

- Ans  1. Insulator  
 2. Sheath  
 3. Surface of the conductor  
 4. Core of the conductor

Question ID : 96234010299  
Option 1 ID : 96234041195  
Option 2 ID : 96234041196  
Option 3 ID : 96234041193  
Option 4 ID : 96234041194  
Status : Answered  
Chosen Option : 4



Q.1  
1 Which of the following is a Pentavalent element used for doping of semi-conductors?



- Ans
- 1. Aluminum
  - 2. Antimony
  - 3. Indium
  - 4. Boron

Question ID : 96234010261  
Option 1 ID : 96234041042  
Option 2 ID : 96234041044  
Option 3 ID : 96234041043  
Option 4 ID : 96234041041  
Status : Not Answered  
Chosen Option : --

Q.1 ఈ కిందివాటిలో ఏ వాహకనాళం (కండక్టర్) వాణిజ్య మరియు పారిత్రామిక వైరింగ్ లో సాధారణంగా ఉపయోగించబడుతోంది?

- Ans
- 1. సీమ్ వెల్డెడ్ కండక్టర్
  - 2. 
  - 3. అనువైన కండక్టర్
  - 4. 

Question ID : 96234010281  
Option 1 ID : 96234041122  
Option 2 ID : 96234041123  
Option 3 ID : 96234041124  
Option 4 ID : 96234041121  
Status : Answered  
Chosen Option : 3

Q.1 Why is the depletion region in Zener diodes narrower than a regular diode?

- Ans
- 1. Because the doping of P & N regions in Zener diode is lighter than in a regular diode.
  - 2. Because of the Heavy doping of P & N regions in Zener diode than in regular diode.
  - 3. Because Zener diodes are made of different semiconductor.
  - 4. Because P region is heavily doped while N region is lightly doped.

Question ID : 96234010318  
Option 1 ID : 96234041270  
Option 2 ID : 96234041269  
Option 3 ID : 96234041271  
Option 4 ID : 96234041272  
Status : Not Answered  
Chosen Option : --

Q.1 The peak output voltage of a transformer will NOT depend on:

- Ans
- 1. supply voltage
  - 2. number of turns in the secondary coil
  - 3. number of turns in the primary coil
  - 4. frequency of the supply voltage

Question ID : 96234010272

Option 1 ID : 96234041085  
Option 2 ID : 96234041088  
Option 3 ID : 96234041087  
Option 4 ID : 96234041086  
Status : Answered  
Chosen Option : 2

Q.1  
5 How is the condition of an earth electrode verified?

- Ans
- 1. By Measuring power
  - 2. By measuring resistance
  - 3. By Measuring Voltage
  - 4. By measuring current

Question ID : 96234010314  
Option 1 ID : 96234041255  
Option 2 ID : 96234041254  
Option 3 ID : 96234041256  
Option 4 ID : 96234041253  
Status : Answered  
Chosen Option : 2

Q.1  
6 How many P-N junction diode(s) is/are required for a full wave rectifier circuit?

- Ans
- 1. 2
  - 2. 1
  - 3. 4
  - 4. 6

Question ID : 96234010258  
Option 1 ID : 96234041029  
Option 2 ID : 96234041030  
Option 3 ID : 96234041031  
Option 4 ID : 96234041032  
Status : Answered  
Chosen Option : 3

Q.1  
7 V-I curve of an ohmic component will be a/an:

- Ans
- 1. elliptical
  - 2. parabolic
  - 3. straight line
  - 4. non-linear

Question ID : 96234010293  
Option 1 ID : 96234041170  
Option 2 ID : 96234041171  
Option 3 ID : 96234041169  
Option 4 ID : 96234041172  
Status : Not Answered  
Chosen Option : --

Q.1  
8 If a reverse biased Zener diode is operating in breakdown region, then the voltage across Zener diode:

- Ans
- 1. will remain same irrespective of the current through the circuit

- 2. is directly proportional to the source voltage
- 3. is directly proportional to the current
- 4. is inversely proportional to the current

Question ID : 96234010317  
Option 1 ID : 96234041267  
Option 2 ID : 96234041266  
Option 3 ID : 96234041265  
Option 4 ID : 96234041268  
Status : Not Answered  
Chosen Option : --

Q.1  
9 Increase in the plate area of a cell will:

- Ans  1. have the same impact as increasing the gap between the plates
- 2. decrease the internal resistance
  - 3. not impact internal resistance
  - 4. increase the internal resistance

Question ID : 96234010308  
Option 1 ID : 96234041232  
Option 2 ID : 96234041230  
Option 3 ID : 96234041231  
Option 4 ID : 96234041229  
Status : Answered  
Chosen Option : 4

Q.2  
0 Two resistors of  $5\ \Omega$  each are connected in series and being powered by a 12 V battery. What is the current flowing through the circuit?

- Ans  1. 2.4 A
- 2. 1 A
  - 3. 2 A
  - 4. 1.2 A

Question ID : 96234010292  
Option 1 ID : 96234041165  
Option 2 ID : 96234041166  
Option 3 ID : 96234041167  
Option 4 ID : 96234041168  
Status : Answered  
Chosen Option : 4

Q.2  
1 First generation computers had which of the following?

- Ans  1. Magnetic tapes
- 2. Transistors
  - 3. ICs
  - 4. Vaccum tubes & Magnetic drum

Question ID : 96234010283  
Option 1 ID : 96234041129  
Option 2 ID : 96234041130  
Option 3 ID : 96234041132  
Option 4 ID : 96234041131  
Status : Answered

Chosen Option : 2

Q.2 A 6 pole 3 $\phi$  induction motor is operating at a speed of 950 rpm on 550 V, 50 Hz mains. What is the slip?

2

- Ans
- 1. 5%
  - 2. 2%
  - 3. 4%
  - 4. Can't be determined

Question ID : 96234010287

Option 1 ID : 96234041146

Option 2 ID : 96234041145

Option 3 ID : 96234041147

Option 4 ID : 96234041148

Status : Answered

Chosen Option : 1

Q.2 Parallel grouping of cells is done to:

3

- Ans
- 1. increase the current capacity
  - 2. increase the internal resistance
  - 3. decrease the output voltage
  - 4. increase the output voltage

Question ID : 96234010310

Option 1 ID : 96234041238

Option 2 ID : 96234041239

Option 3 ID : 96234041240

Option 4 ID : 96234041237

Status : Answered

Chosen Option : 4

Q.2 Which of the following is NOT an alternate term for Hopkinson's test?

4

- Ans
- 1. Heat run test
  - 2. Back to back test
  - 3. Regenerative test
  - 4. Brake test

Question ID : 96234010270

Option 1 ID : 96234041080

Option 2 ID : 96234041078

Option 3 ID : 96234041077

Option 4 ID : 96234041079

Status : Answered

Chosen Option : 1

Q.2 If six 12 V cells are connected in parallel, then the output voltage will be:

5

- Ans
- 1. 6 V
  - 2. 72 V
  - 3. 12 V
  - 4. 2 V

Question ID : 96234010305

Option 1 ID : 96234041217

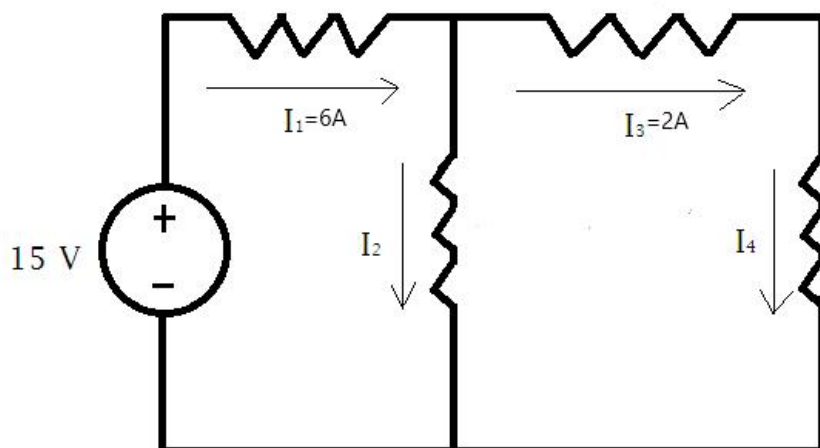
Option 2 ID : 96234041218  
Option 3 ID : 96234041220  
Option 4 ID : 96234041219  
Status : Answered  
Chosen Option : 2

Q.2  
6 What is the color of neutral in three core flexible cables?

- Ans
- 1. Brown
  - 2. Black
  - 3. Blue
  - 4. Red

Question ID : 96234010301  
Option 1 ID : 96234041202  
Option 2 ID : 96234041204  
Option 3 ID : 96234041201  
Option 4 ID : 96234041203  
Status : Answered  
Chosen Option : 3

Q.2  
7 What should be the value of  $I_2$  flowing in the following circuit?



- Ans
- 1. 6 A
  - 2. 2 A
  - 3. 4 A
  - 4. 8 A

Question ID : 96234010291  
Option 1 ID : 96234041162  
Option 2 ID : 96234041163  
Option 3 ID : 96234041161  
Option 4 ID : 96234041164  
Status : Answered  
Chosen Option : 3

Q.2  
8 Which of the following is used in transformer protection system?

- Ans
- 1. Buchholz Relay
  - 2. Pressure Switches
  - 3. MHO relay
  - 4. Merz price protection

Question ID : 96234010275

Option 1 ID : 96234041097

Option 2 ID : 96234041098

Option 3 ID : 96234041100

Option 4 ID : 96234041099

Status : Answered

Chosen Option : 1

Q.2  
9 Which electrolyte is used in Lead-Acid cells?

Ans  1. Concentrated  $H_2SO_4$

2. Diluted  $H_2SO_4$

3. NaOH

4. Any Alkali

Question ID : 96234010307

Option 1 ID : 96234041225

Option 2 ID : 96234041227

Option 3 ID : 96234041226

Option 4 ID : 96234041228

Status : Answered

Chosen Option : 4

Q.3  
0 Which of the following is the ideal value of earthing resistance used for large power stations?

Ans  1.  $1 \Omega$

2.  $0.5 \Omega$

3.  $5 \Omega$

4.  $10 \Omega$

Question ID : 96234010255

Option 1 ID : 96234041020

Option 2 ID : 96234041017

Option 3 ID : 96234041018

Option 4 ID : 96234041019

Status : Answered

Chosen Option : 2

Q.3  
1 క్రిందివాటిలో ఏది ఎర్టింగ్ వ్యవస్థ యొక్క భాగం కాదు?

Ans  1. ఎర్టింగ్ లీడ్

2. ఎర్త్ కంటిన్యూటీ కండక్టర్ (వాహకం)

3. ఎర్త్ ఎలక్ట్రోడ్

4. ఫ్యూజ్

Question ID : 96234010256

Option 1 ID : 96234041023

Option 2 ID : 96234041021

Option 3 ID : 96234041024

Option 4 ID : 96234041022

Status : Answered

Chosen Option : 4

Q.3  
2 Lathe Machines commonly use \_\_\_\_\_ motor.

- Ans  1. DC shunt  
 2. slip ring induction  
 3. cumulative compound  
 4. DC series

Question ID : 96234010267  
Option 1 ID : 96234041068  
Option 2 ID : 96234041067  
Option 3 ID : 96234041066  
Option 4 ID : 96234041065  
Status : Answered  
Chosen Option : 1

Q.3 What impact will the moisture content have on the earth soil resistance?

- Ans  1. No Impact  
 2. Soil resistance will decrease  
 3. Soil resistance will Increase  
 4. Depends on the type of soil

Question ID : 96234010312  
Option 1 ID : 96234041246  
Option 2 ID : 96234041247  
Option 3 ID : 96234041245  
Option 4 ID : 96234041248  
Status : Answered  
Chosen Option : 3

Q.3 5 m మరియు 8 m దీర్ఘచతురస్రాకార హాల్లో 50 లక్ష్మకు కావలసిన కాంటిమెంట్ల పొడటానికి ఎన్ని 200 ల్యూమెన్ దీపాలు  
4 అవసరమవుతాయి?

- Ans  1. 10  
 2. 4  
 3. 40  
 4. 160

Question ID : 96234010280  
Option 1 ID : 96234041118  
Option 2 ID : 96234041117  
Option 3 ID : 96234041120  
Option 4 ID : 96234041119  
Status : Answered  
Chosen Option : 3

Q.3 The value of electric field E at a point in Electric field of a point charge can be calculated using:

- Ans  1. Kirchhoff's Law  
 2. Coulomb's Law  
 3. Lenz's Law  
 4. Ohm's Law

Question ID : 96234010298  
Option 1 ID : 96234041190  
Option 2 ID : 96234041191  
Option 3 ID : 96234041192  
Option 4 ID : 96234041189  
Status : Answered

Chosen Option : 2

Q.3  
6 Direct Online Starters are generally used with motors of:

- Ans
- 1. any Capacity
  - 2. less than 5 hp
  - 3. more than 10 hp but less than 50 hp
  - 4. more than 10 hp

Question ID : 96234010271

Option 1 ID : 96234041083

Option 2 ID : 96234041082

Option 3 ID : 96234041084

Option 4 ID : 96234041081

Status : Answered

Chosen Option : 2

Q.3  
7 అమ్మీటర్ & వోల్ట్మీటర్కు సంబంధించి ఈ క్రిందివాటిలో ఏది నిజమైనది కాదు?

- Ans
- 1. అమ్మీటర్ అధిక నిరోధం కలిగిఉంటుంది మరియు వోల్ట్మీటర్ తక్కువ నిరోధం కలిగిఉంటుంది
  - 2. అమ్మీటర్ శ్రేణిలో కలుపబడుతుంది మరియు వోల్ట్మీటర్ సమాంతరంగా కలుపబడుతుంది
  - 3. సర్క్యూట్కు అమ్మీటర్ కలుపుటకు సర్క్యూట్ను విచ్ఛిన్నం చేయవలసి ఉంటుంది.
  - 4. సర్క్యూట్ను వేరుచేయకుండానే వోల్ట్మీటర్ను కలుపవచ్చు

Question ID : 96234010276

Option 1 ID : 96234041102

Option 2 ID : 96234041101

Option 3 ID : 96234041104

Option 4 ID : 96234041103

Status : Answered

Chosen Option : 4

Q.3  
8 Which of the following devices is used for measuring the speed of DC machines?

- Ans
- 1. Tachometer
  - 2. LCR Meter
  - 3. Rheostat
  - 4. Ammeter

Question ID : 96234010269

Option 1 ID : 96234041076

Option 2 ID : 96234041075

Option 3 ID : 96234041074

Option 4 ID : 96234041073

Status : Answered

Chosen Option : 1

Q.3  
9 Read the statement given below and answer the question.

Statement: The mass of the substance (m) deposited or liberated at any electrode is directly proportional to the quantity of electricity or charge (Q) passed.

Question: The above statement is associated with which of the following laws?

Ans



- 1. Ohm's Law
- 2. Faraday's Law Of Electrolysis
- 3. Kirchhoff's Current Law
- 4. Faraday's Law Of Electromagnetic Induction

Question ID : 96234010304  
 Option 1 ID : 96234041216  
 Option 2 ID : 96234041215  
 Option 3 ID : 96234041214  
 Option 4 ID : 96234041213  
 Status : Answered  
 Chosen Option : 2

Q.4 ఆల్టర్నేటర్ల యొక్క సమాంతర క్రియ కోసం క్రింది పరిస్థితుల్లో ఏది అవసరం లేదు?

- Ans  1. ఇన్కమింగ్ మెషిన్ యొక్క దశ క్రమం మరియు బస్ బార్ వోల్టేజీలు సారూప్యంగా ఉండాలి
2. రన్నింగ్ మెషిన్ యొక్క టర్మినల్ వోల్టేజీ ఇన్కమింగ్ మెషిన్కు రెట్టింపుగా ఉండాలి
3. రెండు టర్మినల్ వోల్టేజీల పోనపున్యం దాదాపుగా సమానంగా ఉండాలి
4. రెండు సిస్టంల యొక్క ఫీజ్ యాంగిల్ సమానంగా ఉండాలి

Question ID : 96234010284  
 Option 1 ID : 96234041133  
 Option 2 ID : 96234041134  
 Option 3 ID : 96234041136  
 Option 4 ID : 96234041135  
 Status : Not Answered  
 Chosen Option : --

Q.4 Which of the following is true for specific resistance of soil?

- Ans  1. Varies from soil to soil
2. Is constant and doesn't depend on the soil
3. Depends on the circuit connected
4. Depends on supply voltage

Question ID : 96234010315  
 Option 1 ID : 96234041257  
 Option 2 ID : 96234041258  
 Option 3 ID : 96234041259  
 Option 4 ID : 96234041260  
 Status : Answered  
 Chosen Option : 1

Q.4 A 220 V dc motor having an armature resistance of 0.8 ohm draws an armature current of 25 A. What will be the value of back emf induced?

- Ans  1. 240 V
2. 220 V
3. 200 V
4. 208 V

Question ID : 96234010324

Option 1 ID : 96234041294  
Option 2 ID : 96234041296  
Option 3 ID : 96234041295  
Option 4 ID : 96234041293  
Status : Answered  
Chosen Option : 1

Q.4  
3 How many wattmeter elements are needed at minimum to measure the power of a 3-phase circuit?

- Ans  1. 2  
 2. 1  
 3. 4  
 4. 3

Question ID : 96234010277  
Option 1 ID : 96234041108  
Option 2 ID : 96234041105  
Option 3 ID : 96234041107  
Option 4 ID : 96234041106  
Status : Answered  
Chosen Option : 1

Q.4  
4 Intensity of light is measured in:

- Ans  1. Gauss  
 2. Weber  
 3. Candela  
 4. Lumen

Question ID : 96234010279  
Option 1 ID : 96234041114  
Option 2 ID : 96234041115  
Option 3 ID : 96234041113  
Option 4 ID : 96234041116  
Status : Answered  
Chosen Option : 4

Q.4  
5 Which of the following is true w.r.t. the primary coil of a transformer in OC & SC tests?

- Ans  1.  
Low voltage side for O.C. test & high voltage side for S.C. test  
 2. Low Voltage side for both O.C. & S.C. tests  
 3.  
High voltage side for O.C. test & low voltage side for S.C. test  
 4. High Voltage side for both O.C. & S.C. tests

Question ID : 96234010274  
Option 1 ID : 96234041093  
Option 2 ID : 96234041095  
Option 3 ID : 96234041094  
Option 4 ID : 96234041096  
Status : Answered  
Chosen Option : 3

Q.4  
6 Which of the following factors determines the thickness of the insulation layer in cables?

- Ans  1. Current Capacity

- 2. Power rating
- 3. Operating Voltage
- 4. Permeability

Question ID : 96234010302  
Option 1 ID : 96234041205  
Option 2 ID : 96234041207  
Option 3 ID : 96234041206  
Option 4 ID : 96234041208  
Status : Answered  
Chosen Option : 1

Q.4  
7 The shaft torque of a DC motor is:

- Ans
- 1. more than its armature torque
  - 2. same as its armature torque
  - 3. less than its armature torque
  - 4.

either less or more than the armature torque depending on the size and make of the motor

Question ID : 96234010323  
Option 1 ID : 96234041291  
Option 2 ID : 96234041289  
Option 3 ID : 96234041290  
Option 4 ID : 96234041292  
Status : Answered  
Chosen Option : 1

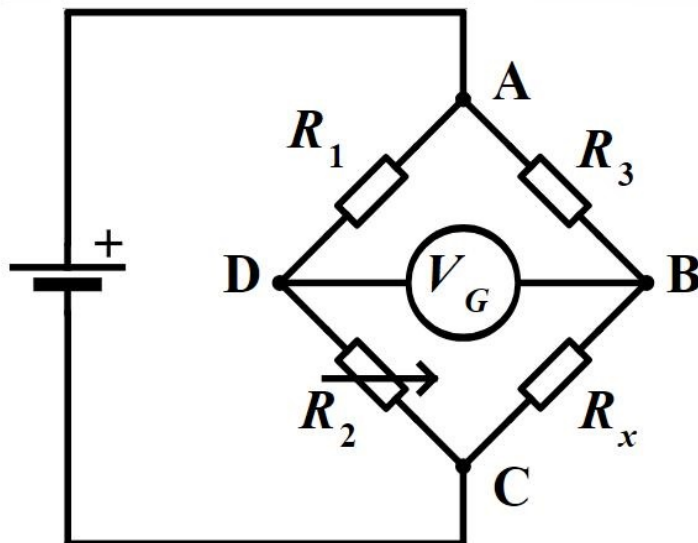
Q.4  
8 Watt-hour efficiency of a cell \_\_\_\_\_ Ampere-hour efficiency.

- Ans
- 1. is always less than
  - 2. is always more than
  - 3. is always equal to
  - 4. can be less or more than

Question ID : 96234010288  
Option 1 ID : 96234041151  
Option 2 ID : 96234041150  
Option 3 ID : 96234041149  
Option 4 ID : 96234041152  
Status : Not Answered  
Chosen Option : --

Q.4  
9

Which of the expressions is true for the balanced condition of the following wheatstone bridge?



- Ans
- 1.  $R_x = (R_3 + R_1) / R_2$
  - 2.  $R_x / R_3 = R_2 / R_1$
  - 3.  $R_x = R_2 / (R_3 / R_1)$
  - 4.  $R_x / R_1 = R_2 / R_3$

Question ID : 96234010294

Option 1 ID : 96234041176

Option 2 ID : 96234041174

Option 3 ID : 96234041175

Option 4 ID : 96234041173

Status : Answered

Chosen Option : 2

Q.5  
0 Which of the following is a characteristic of an earth electrode?

- Ans
- 1. Low conductance
  - 2. Low resistance
  - 3. Infinite resistance
  - 4. High resistance

Question ID : 96234010254

Option 1 ID : 96234041016

Option 2 ID : 96234041014

Option 3 ID : 96234041015

Option 4 ID : 96234041013

Status : Answered

Chosen Option : 2

Q.5  
1 Which of the following principles is KVL based on?

- Ans
- 1. conservation of momentum
  - 2. conservation of energy
  - 3. conservation of mass
  - 4. conservation of charge

Question ID : 96234010297

Option 1 ID : 96234041187

Option 2 ID : 96234041185

Option 3 ID : 96234041186  
Option 4 ID : 96234041188  
Status : Answered  
Chosen Option : 1

Q.5  
2 Which of the following wiring systems has the longest life span?

- Ans
- 1. Conduit Wiring
  - 2. Batten Wiring
  - 3. Cleat Wiring
  - 4. Casing and Capping Wiring

Question ID : 96234010263  
Option 1 ID : 96234041050  
Option 2 ID : 96234041051  
Option 3 ID : 96234041049  
Option 4 ID : 96234041052  
Status : Answered  
Chosen Option : 4

Q.5  
3 Which of the following is a trivalent doping element?

- Ans
- 1. Arsenic
  - 2. Antimony
  - 3. Boron
  - 4. Phosphorous

Question ID : 96234010320  
Option 1 ID : 96234041277  
Option 2 ID : 96234041278  
Option 3 ID : 96234041280  
Option 4 ID : 96234041279  
Status : Not Answered  
Chosen Option : --

Q.5  
4 IE Rule 67 stands for:

- Ans
- 1. test for resistance of insulation
  - 2. joints
  - 3. connection with earth
  - 4. condensers

Question ID : 96234010266  
Option 1 ID : 96234041063  
Option 2 ID : 96234041062  
Option 3 ID : 96234041061  
Option 4 ID : 96234041064  
Status : Not Answered  
Chosen Option : --

Q.5  
5 If a 3-phase 100 Hz induction motor has a slip of 4%, then what will be the frequency of motor induced emf?

- Ans
- 1. 50 Hz
  - 2. 8 Hz
  - 3. 100 Hz

✓ 4. 4 Hz

Question ID : 96234010286  
Option 1 ID : 96234041141  
Option 2 ID : 96234041142  
Option 3 ID : 96234041144  
Option 4 ID : 96234041143  
Status : Answered  
Chosen Option : 3

Q.5  
6 Which of the following motors is typically found on low horsepower applications?

- Ans
- ✓ 1. Permanent magnet DC motors
  - ✗ 2. Shunt DC motors
  - ✗ 3. Compound DC motors
  - ✗ 4. Series DC motors

Question ID : 96234010268  
Option 1 ID : 96234041070  
Option 2 ID : 96234041071  
Option 3 ID : 96234041072  
Option 4 ID : 96234041069  
Status : Answered  
Chosen Option : 1

Q.5  
7 Which of the following components is present in a DC machine but NOT in AC machine?

- Ans
- ✗ 1. Winding
  - ✓ 2. Commutator
  - ✗ 3. Stator
  - ✗ 4. Shaft

Question ID : 96234010322  
Option 1 ID : 96234041288  
Option 2 ID : 96234041287  
Option 3 ID : 96234041286  
Option 4 ID : 96234041285  
Status : Answered  
Chosen Option : 2

Q.5  
8 Which of the following core types is suitable for high frequency transformers used in radio transmission?

- Ans
- ✗ 1. Copper core
  - ✗ 2. Carbonyl Iron core
  - ✓ 3. Air core
  - ✗ 4. Soft Iron core

Question ID : 96234010273  
Option 1 ID : 96234041091  
Option 2 ID : 96234041092  
Option 3 ID : 96234041090  
Option 4 ID : 96234041089  
Status : Answered  
Chosen Option : 4

Q.5  
9 Which of the following is an application of Zener diode?

- Ans
- 1. Rectifier
  - 2. Voltage Regulator
  - 3. Amplifier
  - 4. Oscillator

Question ID : 96234010257  
Option 1 ID : 96234041028  
Option 2 ID : 96234041027  
Option 3 ID : 96234041026  
Option 4 ID : 96234041025  
Status : Answered  
Chosen Option : 2

Q.6  
0 Which of the following statements is true?

- Ans
- 1. Internal resistance is 0 for an ideal current source.
  - 2. Internal resistance is infinite for an ideal voltage source.
  - 3.  
Internal resistance is 0 for an ideal voltage source and infinite for an ideal current source.
  - 4.  
Internal resistance should be 0 for ideal current as well as ideal voltage source.

Question ID : 96234010295  
Option 1 ID : 96234041177  
Option 2 ID : 96234041178  
Option 3 ID : 96234041179  
Option 4 ID : 96234041180  
Status : Not Answered  
Chosen Option : --

Q.6  
1 Avalanche breakdown is caused due to:

- Ans
- 1. emission of electrons
  - 2. Impact of ionization
  - 3. strong electric field
  - 4. high temperature

Question ID : 96234010260  
Option 1 ID : 96234041039  
Option 2 ID : 96234041040  
Option 3 ID : 96234041037  
Option 4 ID : 96234041038  
Status : Answered  
Chosen Option : 2

Q.6  
2 If a silicon diode is operating in forward bias in a circuit with 12 V supply and 240  $\Omega$  resistor, then what will be the voltage drop across the diode?

- Ans
- 1. 1.5 V
  - 2. 6 V
  - 3. 12 V
  - 4. 0.7 V

Question ID : 96234010319  
Option 1 ID : 96234041276  
Option 2 ID : 96234041273

Option 3 ID : 96234041275  
Option 4 ID : 96234041274  
Status : Answered  
Chosen Option : 4

Q.6  
3 Wheatstone bridge can be used to measure \_\_\_\_\_.

- Ans
- 1. power
  - 2. resistance
  - 3. voltage
  - 4. current

Question ID : 96234010289  
Option 1 ID : 96234041155  
Option 2 ID : 96234041154  
Option 3 ID : 96234041153  
Option 4 ID : 96234041156  
Status : Answered  
Chosen Option : 3

Q.6  
4 Which of the following components protects a cable against mechanical injury?

- Ans
- 1. Sheath
  - 2. Armouring
  - 3. Bedding
  - 4. Insulation

Question ID : 96234010300  
Option 1 ID : 96234041197  
Option 2 ID : 96234041200  
Option 3 ID : 96234041199  
Option 4 ID : 96234041198  
Status : Answered  
Chosen Option : 1

Q.6  
5 A wire of length 'L' with resistance  $10\ \Omega$  is drawn further so that its length becomes 2 L. What will be the resistance of the new wire?

- Ans
- 1.  $5\ \Omega$
  - 2.  $10\ \Omega$
  - 3.  $40\ \Omega$
  - 4.  $20\ \Omega$

Question ID : 96234010252  
Option 1 ID : 96234041008  
Option 2 ID : 96234041005  
Option 3 ID : 96234041007  
Option 4 ID : 96234041006  
Status : Answered  
Chosen Option : 4

Q.6  
6 ఈ క్రింది కేబుల్స్ లో ఏవి సాధారణంగా పాఠశాలల్లో మరియు కార్యాలయాలలో LAN ను అందించడానికి ఉపయోగిస్తారు?

- Ans
- 1. UTP
  - 2. TRS
  - 3. CAT 5
  - 4. PVC



Question ID : 96234010282

Option 1 ID : 96234041125

Option 2 ID : 96234041128

Option 3 ID : 96234041126

Option 4 ID : 96234041127

Status : Answered

Chosen Option : 3

Q.6  
7 Controlling Torque in megger is provided by:

- Ans
- 1. gravity
  - 2. coil
  - 3. eddy current
  - 4. battery

Question ID : 96234010278

Option 1 ID : 96234041110

Option 2 ID : 96234041111

Option 3 ID : 96234041112

Option 4 ID : 96234041109

Status : Answered

Chosen Option : 3

Q.6  
8 హై టెన్షన్ కేబుల్స్ సాధారణంగా \_\_\_\_\_ వరకు మద్దతుగల ప్రసరణ లైన్లలో ఉపయోగిస్తారు?

- Ans
- 1. 22 kV
  - 2. 11 kV
  - 3. 33 kV
  - 4. 50 kV

Question ID : 96234010303

Option 1 ID : 96234041212

Option 2 ID : 96234041211

Option 3 ID : 96234041210

Option 4 ID : 96234041209

Status : Answered

Chosen Option : 3

Q.6  
9 The current carrying capacity of cables is:

- Ans
- 1. relatively more in AC
  - 2. sometimes more in AC and sometimes more in DC
  - 3. same in AC as well as DC
  - 4. relatively more in DC

Question ID : 96234010306

Option 1 ID : 96234041221

Option 2 ID : 96234041223

Option 3 ID : 96234041222

Option 4 ID : 96234041224

Status : Answered

Chosen Option : 4

Q.7  
0 What will be the power dissipation across a silicon diode carrying a current of 50 mA?

- Ans
- 1. 25 mW

- 2. 50 W
- 3. 35 mW
- 4. 100 mW

Question ID : 96234010262  
Option 1 ID : 96234041046  
Option 2 ID : 96234041045  
Option 3 ID : 96234041047  
Option 4 ID : 96234041048  
Status : Answered  
Chosen Option : 3

Q.7 A half wave rectifier has a 200 V rms. source and the step-down transformer has a turns ratio of 4 : 1. What will be the peak voltage across the load ignoring the drop across the diode?

- Ans
- 1. 70.7 V
  - 2. 40 V
  - 3. 100 V
  - 4. 50 V

Question ID : 96234010259  
Option 1 ID : 96234041034  
Option 2 ID : 96234041035  
Option 3 ID : 96234041036  
Option 4 ID : 96234041033  
Status : Not Answered  
Chosen Option : --

Q.7 Which of the following is required for grouping 2 cells in parallel?

- Ans
- 1. They should have same internal resistance.
  - 2. They should be Fully charged.
  - 3. They should have the same ampere-hour rating.
  - 4. They should have same emf.

Question ID : 96234010309  
Option 1 ID : 96234041233  
Option 2 ID : 96234041234  
Option 3 ID : 96234041236  
Option 4 ID : 96234041235  
Status : Answered  
Chosen Option : 4

Q.7 Which of the following IE rules stands for "Danger Notices"?

- Ans
- 1. IE Rule 45
  - 2. IE Rule 43
  - 3. IE Rule 35
  - 4. IE Rule 42

Question ID : 96234010265  
Option 1 ID : 96234041059  
Option 2 ID : 96234041058  
Option 3 ID : 96234041060  
Option 4 ID : 96234041057  
Status : Not Answered  
Chosen Option : --

Q.7  
4 KCL is based on the principle of:

- Ans
- 1. conservation of mass
  - 2. conservation of momentum
  - 3. conservation of charge
  - 4. conservation of energy

Question ID : 96234010296

Option 1 ID : 96234041182

Option 2 ID : 96234041183

Option 3 ID : 96234041184

Option 4 ID : 96234041181

Status : Answered

Chosen Option : 3

Q.7  
5 Which of the following is NOT true of parallel operation of alternators?

- Ans
- 1. Increase in reliability
  - 2. Increase in losses
  - 3. Increase in efficiency
  - 4. Proper load sharing

Question ID : 96234010285

Option 1 ID : 96234041138

Option 2 ID : 96234041140

Option 3 ID : 96234041139

Option 4 ID : 96234041137

Status : Answered

Chosen Option : 2