

Combined Higher Secondary Level Examination 2019 Tier I

Roll Number	
Candidate Name	
Venue Name	iON Digital Zone iDZ Sheela Nagar
Exam Date	15/10/2020
Exam Time	10:00 AM - 11:00 AM
Subject	CHSL Tier 1

Section : English Language (Basic Knowledge)

Q.1 Select the most appropriate ANTONYM of the given word.

AGITATE

- Ans 1. Calm
 2. Excite
 3. Impress
 4. Argue

Question ID : 8161612852

Status : Answered

Chosen Option : 1

Q.2 Select the option that is the passive form of the given sentence.

The Principal gave her a warning about coming late to school every day.

- Ans 1. She has given a warning by the Principal about coming late to school every day.
 2. She gives a warning to the Principal about coming late to school every day.
 3. She was giving a warning by the Principal about coming late to school every day.
 4. She was given a warning about coming late to school every day by the Principal.

Question ID : 8161612838

Status : Answered

Chosen Option : 1

Q.3 Select the most appropriate option to fill in the blank in the given sentence.

Over 7,50,000 people from 192 countries have pledged to go vegan for a month which, they say, would reduce carbon _____ by 45000 tons.

- Ans
- 1. exclusion
 - 2. emission
 - 3. inclusion
 - 4. omission

Question ID : 8161612862

Status : Answered

Chosen Option : 2

Q.4 Select the most appropriate synonym of the given word.

HOLISTIC

- Ans
- 1. Dissimilar
 - 2. Comprehensive
 - 3. Sketchy
 - 4. Superficial

Question ID : 8161612861

Status : Answered

Chosen Option : 4

Comprehension

In the following passage some words have been deleted. Fill in the blanks with the help of the alternatives given. Select the most appropriate option for each blank.

Simply put, happiness is satisfaction of mind. However, different individuals (1)_____ different perceptions of how to achieve (2)_____. For some, happiness lies (3)_____ wealth; for others, it is in (4)_____ and position; yet happiness is (5)_____ to most.

Sub Question No : 5

Q.5 Select the most appropriate option to fill in blank number 1.

- Ans
- 1. has
 - 2. having
 - 3. have
 - 4. had

Question ID : 8161612843

Status : Answered

Chosen Option : 3

mpcareer.in

Comprehension:

In the following passage some words have been deleted. Fill in the blanks with the help of the alternatives given. Select the most appropriate option for each blank.

Simply put, happiness is satisfaction of mind. However, different individuals (1)_____ different perceptions of how to achieve (2)_____. For some, happiness lies (3)_____ wealth; for others, it is in (4)_____ and position; yet happiness is (5)_____ to most.

SubQuestion No : 6

Q.6 Select the most appropriate option to fill in blank number 2.

- Ans
- 1. dream
 - 2. fame
 - 3. money
 - 4. happiness

Question ID : 8161612844

Status : Answered

Chosen Option : 4

Comprehension:

In the following passage some words have been deleted. Fill in the blanks with the help of the alternatives given. Select the most appropriate option for each blank.

Simply put, happiness is satisfaction of mind. However, different individuals (1)_____ different perceptions of how to achieve (2)_____. For some, happiness lies (3)_____ wealth; for others, it is in (4)_____ and position; yet happiness is (5)_____ to most.

SubQuestion No : 7

Q.7 Select the most appropriate option to fill in blank number 3.

- Ans
- 1. in
 - 2. about
 - 3. over
 - 4. on

Question ID : 8161612845

Status : Answered

Chosen Option : 4

Comprehension:

In the following passage some words have been deleted. Fill in the blanks with the help of the alternatives given. Select the most appropriate option for each blank.

Simply put, happiness is satisfaction of mind. However, different individuals (1)_____ different perceptions of how to achieve (2)_____. For some, happiness lies (3)_____ wealth; for others, it is in (4)_____ and position; yet happiness is (5)_____ to most.

SubQuestion No : 8

Q.8 Select the most appropriate option to fill in blank number 4.

- Ans 1. rank
 2. mind
 3. happiness
 4. satisfaction

Question ID : 8161612846

Status : Answered

Chosen Option : 4

Comprehension:

In the following passage some words have been deleted. Fill in the blanks with the help of the alternatives given. Select the most appropriate option for each blank.

Simply put, happiness is satisfaction of mind. However, different individuals (1)_____ different perceptions of how to achieve (2)_____. For some, happiness lies (3)_____ wealth; for others, it is in (4)_____ and position; yet happiness is (5)_____ to most.

SubQuestion No : 9

Q.9 Select the most appropriate option to fill in blank number 5.

- Ans 1. elusive
 2. probable
 3. fashionable
 4. creative

Question ID : 8161612847

Status : Answered

Chosen Option : 1

Q.10 Select the most appropriate ANTONYM of the given word.

HEINOUS

- Ans 1. Biased
 2. Unwilling
 3. Unhealthy
 4. Agreeable

Question ID : 8161612853

Status : Not Attempted and
Marked For Review

Chosen Option : --

Q.11 Select the most appropriate option to substitute the underlined segment in the given sentence. If there is no need to substitute it, select No improvement.

There is a double-digit growth in salaries of vocational jobs now and the trend are likely to continue in the coming years.

- Ans
- 1. is like to be continued
 - 2. is likely for continuing
 - 3. is likely to continue
 - 4. No improvement

Question ID : 8161612851
Status : Answered
Chosen Option : 3

Q.12 Select the most appropriate synonym of the given word.

LURK

- Ans
- 1. Vibrate
 - 2. Prowl
 - 3. Sing
 - 4. Tremble

Question ID : 8161612860
Status : Answered
Chosen Option : 1

Q.13 Select the word which means the same as the group of words given.

A group of people who have come together in a religious building for worship and prayer

- Ans
- 1. Congregation
 - 2. Crowd
 - 3. Throng
 - 4. Multitude

Question ID : 8161612858
Status : Answered
Chosen Option : 1

Q.14 Identify the segment in the given sentence which contains the grammatical error.

Aryan told Sriram, "Don't worry I can be able to climb that tree to reach the fruit."

- Ans
- 1. Don't worry
 - 2. climb that tree
 - 3. to reach the fruit
 - 4. I can be able to

Question ID : 8161612840

Status : Answered

Chosen Option : 4

Q.15 Select the INCORRECTLY spelt word.

- Ans
- 1. Identification
 - 2. Embodiment
 - 3. Discriminiation
 - 4. Corruption

Question ID : 8161612857

Status : Answered

Chosen Option : 3

Q.16 Select the most appropriate option to substitute the underlined segment in the given sentence. If there is no need to substitute it, select No improvement.

His uncle advised Naveen to keep away from involving himself in the controversy.

- Ans
- 1. No improvement
 - 2. from keep away in
 - 3. for keep away from
 - 4. that he keeps away for

Question ID : 8161612850

Status : Answered

Chosen Option : 1

Q.17 Identify the segment in the given sentence which contains the grammatical error.

Have I ever told you what lovely pickles my grandmother used to made when she was in Visakhapatnam?

- Ans
- 1. Have I ever told you
 - 2. when she was in
 - 3. used to made
 - 4. what lovely pickles

Question ID : 8161612841

Status : Answered

Chosen Option : 4

Q.18 Select the most appropriate word to fill in the blank in the given sentence.

He is your brother, _____?

- Ans
- 1. is he
 - 2. isn't it
 - 3. is it
 - 4. isn't he

Question ID : 8161612863

Status : Answered

Chosen Option : 4

Q.19 Select the most appropriate meaning of the underlined idiom in the given sentence.

Anu jumped the gun and announced their plans at the dinner table.

- Ans
- 1. ate quickly
 - 2. shouted loudly
 - 3. acted hastily
 - 4. started shooting

Question ID : 8161612854

Status : Answered

Chosen Option : 1

Q.20 Given below are four jumbled sentences. Select the option that gives their correct order.

- A. So, clearly, where you get your news from matters, since you can't possibly be expected to verify and authenticate every bit of 'news' you receive.
- B. Are you really sure those apparently sound bits of medical advice you received as forwards would pass muster with your doctor?
- C. Yet, we do often forward these in the belief that we are doing a good deed to our friends and relatives.
- D. Being educated is no guarantee against falling prey to fake news.

- Ans
- 1. DBCA
 - 2. ACBD
 - 3. BACD
 - 4. CADB

Question ID : 8161612849

Status : Answered

Chosen Option : 3

Q.21 Select the option that is the direct form of the given sentence.

The child asked his mother if he could swim in the pool there.

- Ans
- 1. The child asked his mother, "May I swim in the pool here?"
 - 2. The child said to his mother, "Will I swim in the pool here?"
 - 3. The child asked his mother, "Could he swim in the pool there?"
 - 4. The child asked to his mother, "Can he swim in the pool there?"

Question ID : 8161612839

Status : Answered

Chosen Option : 1

Q.22 Select the word which means the same as the group of words given.

Relating to the healing of diseases

- Ans
- 1. Therapeutic
 - 2. Preventive
 - 3. Inoculation
 - 4. Immunity

Question ID : 8161612859

Status : Answered

Chosen Option : 1

Q.23 Select the correctly spelt word.

- Ans
- 1. Acquirum
 - 2. Frequensy
 - 3. Secquence
 - 4. Bouquet

Question ID : 8161612856

Status : Answered

Chosen Option : 4

Q.24 Select the most appropriate meaning of the idiom

Looking for a needle in a haystack.

- Ans
- 1. Searching for small things to do
 - 2. Be interested in sewing and embroidery
 - 3. Attempting something impossible
 - 4. Suddenly deciding to do farming

Question ID : 8161612855

Status : Answered

Chosen Option : 3

Q.25 Given below are four jumbled sentences. Select the option that gives their correct order.

- A. While an average person lives up to 72 years of age, the life expectancy of doctors is only about 59 years, the shocking IMA study concluded.
- B. The sudden death of Dr. Meena Kumar at an International Conference in London after suffering a cardiac arrest has alarmed the medical community.
- C. She was a well-known medico recognised for her services as a consultant neurologist with a career of over 25 years.
- D. Her death brings to the fore the fact that even doctors have risky life-styles and a hard life, a study by the Indian Medical Association conducted on doctors, said.

- Ans
- 1. ABDC
 - 2. BCDA
 - 3. DABC
 - 4. CABD

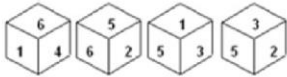
Question ID : 8161612848

Status : Answered

Chosen Option : 2

Section : General Intelligence

Q.1 Four different positions of the same dice are shown. Select the number that will be on the face opposite to the face having number '6'.



- Ans
- 1. 3
 - 2. 2
 - 3. 1
 - 4. 5

Question ID : 8161612882

Status : Answered

Chosen Option : 1

Q.2 'Umpire' is related to 'Pitch' in the same way as 'Mechanic' is related to '_____'.

- Ans
- 1. Repair
 - 2. Garage
 - 3. Machine
 - 4. Spanner

Question ID : 8161612875

Status : Answered

Chosen Option : 2

Q.3 Four letter-clusters have been given, out of which three are alike in some manner and one is different. Select the odd letter-cluster.

- Ans
- 1. NKHEB
 - 2. SPMJG
 - 3. FHLQR
 - 4. UROLI

Question ID : 8161612879

Status : Answered

Chosen Option : 3

Q.4 Which letter will replace the question mark (?) to complete the following series?

F, I, M, ?, X

- Ans
- 1. R
 - 2. T
 - 3. Q
 - 4. S

Question ID : 8161612871

Status : Answered

Chosen Option : 1

Q.5 If '+' means '×'; '×' means '-'; '-' means '+' and '÷' means '×'. Then find the value of following expression.

$$18 + 2 - 5 \times 6 \div 4 = ?$$

- Ans
- 1. 12.5
 - 2. 43
 - 3. 45
 - 4. 47

Question ID : 8161612870

Status : Answered

Chosen Option : 2

Q.6 Select the option that is related to the third letter-cluster in the same way as the second letter-cluster is related to the first letter-cluster.

STOP : HGLK :: LAMB : ?

- Ans
- 1. PYOX
 - 2. JYKZ
 - 3. NCOD
 - 4. OZNY

Question ID : 8161612874

Status : Answered

Chosen Option : 4

Q.7 Which letter-cluster will replace the question mark (?) to complete the following series?

PGD, SEE, VCF, ?, ?

- Ans
- 1. YAH, BZH
 - 2. YAG, BYH
 - 3. ZBD, CYI
 - 4. YAD, BYH

Question ID : 8161612876

Status : Answered

Chosen Option : 2

Q.8 In a certain code language, HIMACHAL is written as LAHCAMIH. How will MAGNETIC be written as in that language?

- Ans
- 1. GAMNECIT
 - 2. ETICNGAM
 - 3. CIETNGAM
 - 4. CITENGAM

Question ID : 8161612872

Status : Answered

Chosen Option : 4

Q.9 Select the correct mirror image of the given figure when the mirror is placed to the right side of the figure.



Ans

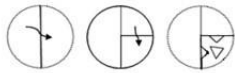
- 1.
- 2.
- 3.
- 4.

Question ID : 8161612887

Status : Answered

Chosen Option : 4

Q.10 The sequence of folding a piece of paper and the manner in which the folded paper has been cut is shown in the following figures. How would this paper look when unfolded?



Ans

1.



2.



3.



4.



Question ID : 8161612886

Status : Answered

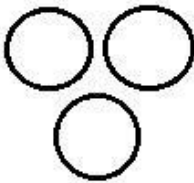
Chosen Option : 3

Q.11 Select the Venn diagram that best illustrates the relationship between the following classes.

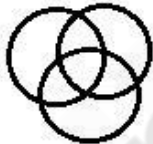
Fruits, Eatables, Cookies

Ans

1.



2.



3.



4.



Question ID : 8161612888

Status : Answered

Chosen Option : 4

Q.12 Introducing a lady, Raman said, "She is the wife of my father's father-in-law". How is the lady related to Raman?

- Ans
- 1. Paternal grandmother
 - 2. Maternal aunt
 - 3. Mother in law
 - 4. Maternal grandmother

Question ID : 8161612877
Status : Answered
Chosen Option : 4

Q.13 Select the number that can replace the question mark (?) in the following series.

2, 2, 6, 10, 22, 42, ?

- Ans
- 1. 82
 - 2. 84
 - 3. 64
 - 4. 86

Question ID : 8161612869
Status : Answered
Chosen Option : 4

Q.14 Select the option in which the numbers share the same relationship as that shared by the given pair of numbers.

12 : 64

- Ans
- 1. 11 : 56
 - 2. 13 : 65
 - 3. 16 : 76
 - 4. 14 : 72

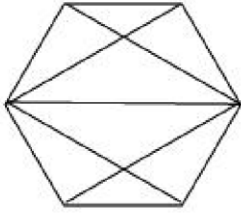
Question ID : 8161612866
Status : Answered
Chosen Option : 2

Q.15 In a certain code language, TIFFIN is coded as 67 and BOX is coded as 44. How will CARDBOARD be coded as in that language?

- Ans
- 1. 69
 - 2. 64
 - 3. 67
 - 4. 66

Question ID : 8161612873
Status : Answered
Chosen Option : 1

Q.16 How many triangles are present in the following figure?



- Ans 1. 16
 2. 18
 3. 14
 4. 12

Question ID : 8161612884
Status : Marked For Review
Chosen Option : 1

Q.17 Four letter-clusters have been given, out of which three are alike in some manner and one is different. Select the odd letter-cluster.

- Ans 1. ILPU
 2. YVRO
 3. ADHM
 4. ORVA

Question ID : 8161612880
Status : Answered
Chosen Option : 2

Q.18 Select the option in which the numbers are related in the same way as are the numbers of the following set.

(11, 57, 8)

- Ans 1. (15, 81, 12)
 2. (18, 89, 15)
 3. (12, 64, 10)
 4. (15, 38, 13)

Question ID : 8161612868
Status : Answered
Chosen Option : 1

Q.19 Select the option in which the words share the same relationship as that shared by the given pair of words.

Syringe : Piston

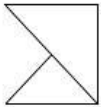
- Ans**
- 1. Bulb : Light
 - 2. Vehicle : Passenger
 - 3. Tyre : Tube
 - 4. Balloon : Air

Question ID : 8161612878

Status : Answered

Chosen Option : 3

Q.20 Select the option in which the given figure is embedded. (Rotation is not allowed)



Ans

- 1.
- 2.
- 3.
- 4.

Question ID : 8161612885

Status : Answered

Chosen Option : 4

Q.21 Select the option in which the numbers are related in the same way as are the numbers of the following set.

(26, 63, 124)

- Ans**
- 1. (63, 124, 215)
 - 2. (125, 216, 343)
 - 3. (63, 123, 213)
 - 4. (126, 217, 344)

Question ID : 8161612867

Status : Answered

Chosen Option : 1

Q.22 Which two signs should be interchanged in the following equation to make it correct?

$$78 \div 6 \times 4 - 3 + 9 = 10$$

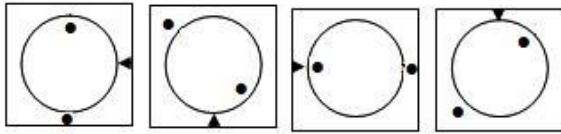
- Ans**
- 1. + and -
 - 2. - and \times
 - 3. \times and \div
 - 4. \div and +

Question ID : 8161612865

Status : Answered

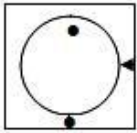
Chosen Option : 2

Q.23 Select the option figure that will come next in the following series.

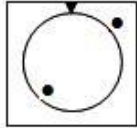


Ans

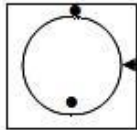
1.



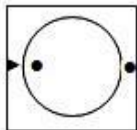
2.



3.



4.



Question ID : 8161612883

Status : Answered

Chosen Option : 3

Q.24 Study the given pattern carefully and select the number that can replace the question mark (?) in it.

150	25	100
132	22	88
162	?	108

Ans

1. 27

2. 24

3. 29

4. 30

Question ID : 8161612864

Status : Answered

Chosen Option : 1

Q.25 Read the given statements and conclusions carefully. Assuming that the information given in the statements is true, even if it appears to be at variance with commonly known facts, decide which of the given conclusions logically follow(s) from the statements.

Statements:

1. All cars are motors.
2. All motors are cycles.

Conclusions:

- I. All cycles are cars.
- II. All cars are cycles.

- Ans
- 1. Both conclusions I and II follow.
 - 2. Only conclusion I follows.
 - 3. Neither conclusion I nor II follows.
 - 4. Only conclusion II follows.

Question ID : 8161612881

Status : Answered

Chosen Option : 4

Section : Quantitative Aptitude(Basic Arithmetic Skill)

Q.1 Tap A can fill a tank in 6 hours and tap B can empty the same tank in 10 hours. If both taps are opened together, then how much time (in hours) will be taken to fill the tank?

- Ans
- 1. 18
 - 2. 20
 - 3. 15
 - 4. 16

Question ID : 8161612889

Status : Answered

Chosen Option : 3

Q.2 In a circle, two equal and parallel chords are 6 cm apart and they lie on the opposite sides of the centre of the circle, whose radius is 5 cm. The length of each chord (in cm), is:

- Ans
- 1. 8
 - 2. 6
 - 3. 12
 - 4. 10

Question ID : 8161612899

Status : Answered

Chosen Option : 1

Q.3 If $\sin x - \cos x = 0, 0^\circ < x < 90^\circ$ then the value of $(\sec x + \operatorname{cosec} x)^2$ is:

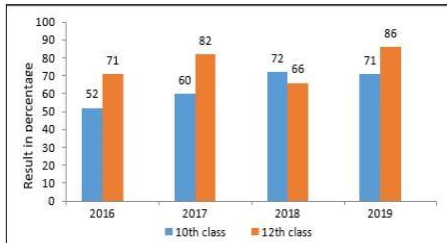
- Ans
- 1. 10
 - 2. 8
 - 3. 6
 - 4. 4

Question ID : ~~8161612909~~

Status : Answered

Chosen Option : 2

Q.4 The given bar graph represents the pass percentage of 10th and 12th classes of a school during the consecutive four year period 2016-2019.



What is the average percentage of the failed students of the 12th class for all four years?

- Ans
- 1. 25.75%
 - 2. 25.25%
 - 3. 23.75%
 - 4. 23%

Question ID : ~~8161612912~~

Status : Answered

Chosen Option : 3

Q.5 The given bar graph represents the pass percentage of the 10th and 12th classes of a school during the consecutive four year period 2016-2019.



What is the average of pass percentage of the 10th class for all four years?

- Ans
- 1. 65.25%
 - 2. 65.75%
 - 3. 63.25%
 - 4. 63.75%

Question ID : 8161612910

Status : Answered

Chosen Option : 4

Q.6 The average marks of Ravi in five subjects are 150, but in mathematics 43 was misread as 23 during the calculation. The correct average is:

- Ans
- 1. 148
 - 2. 154
 - 3. 150
 - 4. 160

Question ID : 8161612892

Status : Answered

Chosen Option : 2

Q.7 If an amount of ₹800 is distributed between Ravi, Mohan and Govind in the proportions 2 : 5 : 3, then the sum of the shares of Mohan and Govind, is:

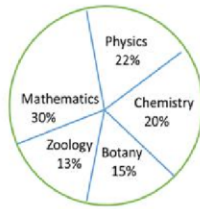
- Ans
- 1. ₹560
 - 2. ₹240
 - 3. ₹640
 - 4. ₹400

Question ID : 8161612896

Status : Answered

Chosen Option : 3

Q.8 Study the given pie-chart and table carefully and answer the question that follows. The percentage-wise distribution of lecturers in five different subjects in a university is shown in the pie-chart. The total number of lecturers is 500.



Ratio of male to female lecturers:

Lecturers	Males : Females
Mathematics	7 : 3
Physics	2 : 3
Chemistry	4 : 1
Botany	3 : 5
Zoology	2 : 5

Find the number of male lecturers in Physics.

- Ans
- 1. 40
 - 2. 44
 - 3. 46
 - 4. 42

Question ID : 8161612913

Status : Answered

Chosen Option : 2

Q.9 The factors of the expression $2x^2 - 5x - 12$ are:

- Ans
- 1. $(x + 4)$ and $(2x + 3)$
 - 2. $(x - 4)$ and $(2x + 3)$
 - 3. $(x + 4)$ and $(2x - 3)$
 - 4. $(x - 4)$ and $(2x - 3)$

Question ID : 8161612903

Status : Answered

Chosen Option : 2

Q.10 In ΔPQR , the side QR is extended to S such that $RS = PR$. If $\angle QPS = 110^\circ$ and $\angle PRQ = 70^\circ$, then the value of $\angle PQR$ is:

- Ans
- 1. 50°
 - 2. 40°
 - 3. 45°
 - 4. 35°

Question ID : 8161612901

Status : Answered

Chosen Option : 4

Q.11 The radius of a circular cone is 6 cm and its height is 7 cm. Then the volume of cone in cm^3 is: (Take $\pi = \frac{22}{7}$)

- Ans 1. 264
 2. 188
 3. 216
 4. 154

Question ID : 8161612891

Status : Answered

Chosen Option : 1

Q.12 A circle is centred at O. Two tangents AP and AQ are drawn from an external point A. If $\angle POQ = 118^\circ$, then $\angle PAQ$ is equal to:

- Ans 1. 62°
 2. 98°
 3. 72°
 4. 112°

Question ID : 8161612898

Status : Answered

Chosen Option : 1

Q.13 In a class, if 60% of the students are boys and the number of girls is 36, then the number of boys is:

- Ans 1. 60
 2. 54
 3. 58
 4. 65

Question ID : 8161612894

Status : Answered

Chosen Option : 2

Q.14 If the marked price of a television set is ₹24,500, then, its selling price after a 12% discount on it is:

- Ans 1. ₹21,560
 2. ₹21,460
 3. ₹21,640
 4. ₹21,650

Question ID : 8161612893

Status : Answered

Chosen Option : 1

Q.15 The area of a rectangle is $a^2 - b^2$ and its length is $a + b$, what will be its breadth?

- Ans
- 1. $a - b$
 - 2. ab
 - 3. $2ab$
 - 4. $a + b$

Question ID : 8161612902

Status : Answered

Chosen Option : 1

Q.16 The compound interest on ₹4,000 after 3 year is ₹630.50. Then the rate of interest compounded yearly is :

- Ans
- 1. 7%
 - 2. 6%
 - 3. 5%
 - 4. 8%

Question ID : 8161612897

Status : Answered

Chosen Option : 3

Q.17 The cost price of 15 pens is equal to the selling price of 20 pens. The loss or profit percentage is:

- Ans
- 1. 25% loss
 - 2. 25% profit
 - 3. 20% profit
 - 4. 20% loss

Question ID : 8161612895

Status : Answered

Chosen Option : 1

Q.18 If a and b are two positive real numbers such that $a + b = 20$ and $ab = 4$, then the value of $a^3 + b^3$ is:

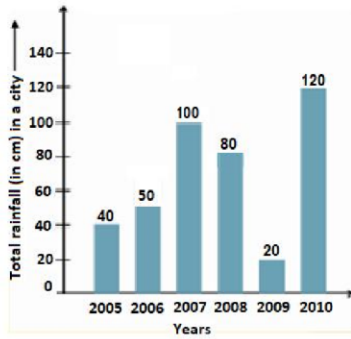
- Ans
- 1. 8000
 - 2. 7760
 - 3. 240
 - 4. 8240

Question ID : 8161612904

Status : Answered

Chosen Option : 2

Q.19 The given graph represents the rainfall (in cm) in a city, over a period of six years. Study the graph and answer the question that follows.



In which two consecutive years was the difference of the rainfall minimum?

- Ans
- 1. 2006 - 2007
 - 2. 2005 - 2006
 - 3. 2008 - 2009
 - 4. 2007 - 2008

Question ID : 8161612911

Status : Answered

Chosen Option : 2

Q.20 If 7129p465 is divisible by 9, then the value of p is:

- Ans
- 1. 4
 - 2. 0
 - 3. 3
 - 4. 2

Question ID : 8161612905

Status : Answered

Chosen Option : 4

Q.21 $\frac{\cos x}{1+\sin x} + \frac{1+\sin x}{\cos x}$ is equal to:

- Ans
- 1. $2\operatorname{cosec}x$
 - 2. $2\operatorname{sec}x$
 - 3. $2\sin x$
 - 4. $2\cos x$

Question ID : 8161612908

Status : Answered

Chosen Option : 2

Q.22 The value of $27 + [3(50 - 20) + 168 \div 4 + 2 - 11 \times 2]$ is :

- Ans
- 1. 149
 - 2. 239
 - 3. 139
 - 4. 245

Question ID : 8161612906

Status : Answered

Chosen Option : 3

Q.23 In a ΔABC , $\angle ABC = 2\angle CAB$, If the side BC is extended to D and $\angle ACD = 126^\circ$, then $\angle CAB$ is:

- Ans
- 1. 63°
 - 2. 84°
 - 3. 42°
 - 4. 36°

Question ID : 8161612900

Status : Answered

Chosen Option : 3

Q.24 Mohan covers a distance of 2.5 km by scooter at the rate of 30 km/h. The time taken by Mohan to cover the given distance in minutes is:

- Ans
- 1. 6
 - 2. 8
 - 3. 5
 - 4. 10

Question ID : 8161612890

Status : Answered

Chosen Option : 3

Q.25 If $\cos x = \frac{p}{q}$ and $0^\circ < x < 90^\circ$, then the value of $\tan x$ is:

- Ans
- 1. $\frac{q}{\sqrt{q^2 - p^2}}$
 - 2. $\frac{\sqrt{q^2 - p^2}}{p}$
 - 3. $\frac{\sqrt{q^2 - p^2}}{q}$
 - 4. $\frac{p}{\sqrt{p^2 - q^2}}$

Question ID : 8161612907

Status : Answered

Chosen Option : 2

Section : General Awareness

Q.1 Robert has sandy soil in his fields. The ideal crop for his field is:

- Ans
- 1. Gram
 - 2. Corn
 - 3. Wheat
 - 4. Cabbage

Question ID : 8161612923
 Status : Not Answered
 Chosen Option : --

Q.2 As of 15 January 2020, who among the following was the Number one ranked women tennis player in the WTA rankings?

- Ans
- 1. Ashleigh Barty
 - 2. Serena Williams
 - 3. Karolína Plíšková
 - 4. Simona Halep

Question ID : 8161612938
 Status : Answered
 Chosen Option : 1

Q.3 Which of the following carries blood from the heart to the kidneys?

- Ans
- 1. Renal artery
 - 2. Coronary artery
 - 3. Vena cava
 - 4. Renal vein

Question ID : 8161612924
 Status : Answered
 Chosen Option : 1

Q.4 Who among the following won the 'Golden Globe 2020' award for 'Best Performance by an Actor in a Motion Picture – Drama'?

- Ans
- 1. John David Washington
 - 2. Lucas Hedges
 - 3. Jonathan Pryce
 - 4. Joaquin Phoenix

Question ID : 8161612932
 Status : Answered
 Chosen Option : 4

Q.5 The State Government of Goa launched the 'Swasthya Sakhi Project' in January 2020 to ensure the:

- Ans
- 1. overall health of new-born children
 - 2. wellness and welfare of women
 - 3. overall health of new-born female children
 - 4. wellness and welfare of rural men or women

Question ID : 8161612919

Status : Answered

Chosen Option : 2

Q.6 Hardwood trees like sal, teak, neem and shisham (useful for making furniture, transport and constructional material) are found in which type of forests?

- Ans
- 1. Temperate Deciduous Forests
 - 2. Tropical Deciduous Forests
 - 3. Coniferous Forests
 - 4. Mediterranean Vegetation

Question ID : 8161612929

Status : Answered

Chosen Option : 1

Q.7 As of 15 January 2020, which of the following nations was the Number one ranked ODI team in the ICC Men's ODI Team Rankings?

- Ans
- 1. India
 - 2. England
 - 3. South Africa
 - 4. New Zealand

Question ID : 8161612936

Status : Answered

Chosen Option : 2

Q.8 The _____ layer starts at Earth's surface and extends 8 to 14.5 km high (5 to 9 miles). This part of the atmosphere is the densest and almost all weather is in this region.

- Ans
- 1. Ionosphere
 - 2. Stratosphere
 - 3. Mesosphere
 - 4. Troposphere

Question ID : 8161612928

Status : Answered

Chosen Option : 4

Q.9 To whom did Mahatma Gandhi give the title 'Deen Bandhu'?

Ans



1. CF Andrews



2. Rabindra Nath Tagore



3. Rajendra Prasad



4. Abdul Ghaffar Khan

Question ID : 8161612930

Status : Answered

Chosen Option : 2

Q.10 Which among the following is a vaccine developed by CSIR, Ministry of Science and Technology for Johne's disease affecting sheep, goat, cow and buffalo to immunize them and increase milk and meat production?

Ans



1. JD Vaccine

Ans



2. Porcine Parvovirus vaccine



3. Infectious Bovine Rhinotracheitis vaccine



4. DIVA (Differentiating Infected from Vaccinated Animals)

Question ID : 8161612925

Status : Not Attempted and Marked For Review

Chosen Option : —

Q.11 Who among the following was elected as the Jharkhand Assembly Speaker in January 2020?

- Ans
- 1. Draupadi Murmu
 - 2. Rabindra Nath Mahato
 - 3. Stephen Marandi
 - 4. Champai Soren

Question ID : 8161612918

Status : Answered

Chosen Option : 3

Q.12 Who among the following formulates the monetary policy in India?

- Ans
- 1. NITI Aayog
 - 2. The Ministry of Statistics and Programme Implementation
 - 3. Finance Commission of India
 - 4. Reserve Bank of India

Question ID : 8161612921

Status : Answered

Chosen Option : 4

Q.13 'Daskathia' is a form of ballad singing prevalent in _____.

- Ans 1. Odisha
 2. Telangana
 3. Sikkim
 4. Goa

Question ID : 8161612916
Status : Not Answered
Chosen Option : --

Q.14 Who among the following won 'ICC Women's ODI Cricketer of the Year 2019'?

- Ans 1. Ellyse Perry
 2. Alyssa Healy
 3. Smriti Mandhana
 4. Chanida Sutthiruang

Question ID : 8161612933
Status : Answered
Chosen Option : 1

Q.15 In the context of computing, a byte is equal to _____ bits.

- Ans 1. 16
 2. 8
 3. 24
 4. 4

Question ID : 8161612914
Status : Answered
Chosen Option : 4

Q.16 Which of the following animals is used for transport in Tibet?

- Ans 1. Camel
 2. Yak
 3. Bullock
 4. Llama

Question ID : 8161612926
Status : Marked For Review
Chosen Option : 2

Q.17 Which of the following environmental movements/conflicts of India was directly related to the prevention of felling of trees?

- Ans
- 1. Narmada Bachao Andolan
 - 2. Tehri Dam Conflict
 - 3. Save Silent Valley Movement
 - 4. Chipko Movement

Question ID : 8161612927

Status : Answered

Chosen Option : 4

Q.18 Which of the following is a type of memory and is similar to RAM? It is used by computers to move data between the RAM and the CPU.

- Ans
- 1. ROM
 - 2. I Beam
 - 3. Cache
 - 4. Hypertext Link

Question ID : 8161612915

Status : Answered

Chosen Option : 1

Q.19 Which of the following movies won the Golden Globe 2020 award for 'Best Motion Picture – Drama'?

- Ans
- 1. Joker
 - 2. The Irishman
 - 3. 1917
 - 4. The Two Popes

Question ID : 8161612920

Status : Answered

Chosen Option : 1

Q.20 Which of the following statements is correct?

- Ans
- 1. The President submits his resignation to the Vice-President.
 - 2. The President submits his resignation to the Chief Justice of India.
 - 3. The President submits his resignation to the Prime Minister.
 - 4. The President submits his resignation to the Speaker of the Lok Sabha.

Question ID : 8161612935

Status : Answered

Chosen Option : 2

Q.21 Tagore Centre for the Study of Culture and Civilization is located in _____.

- Ans
- 1. Madhya Pradesh
 - 2. Himachal Pradesh
 - 3. Andhra Pradesh
 - 4. West Bengal

Question ID : 8161612917

Status : Answered

Chosen Option : 4

Q.22 In which of the following years did Sarojini Naidu preside over the Indian National Congress session?

- Ans
- 1. 1915
 - 2. 1925
 - 3. 1945
 - 4. 1935

Question ID : 8161612931

Status : Answered

Chosen Option : 2

Q.23 Goods and Services Tax (GST) was enacted by Parliament vide _____ Constitutional Amendment Act, 2016 on 8th September 2016.

- Ans
- 1. 107th
 - 2. 103rd
 - 3. 101st
 - 4. 105th

Question ID : 8161612922

Status : Answered

Chosen Option : 2

Q.24 Which of the following teams won the Diamond Jubilee edition of the Subroto Cup International Football Tournament for sub-junior boys (under-14) category in August 2019?

- Ans
- 1. Chandigarh's Government Model High School
 - 2. Mizoram's Saidan Secondary School
 - 3. Manipur's Unique Model Academy
 - 4. Bangladesh's Krira Shikkha Protishtan

Question ID : 8161612937

Status : Not Answered

Chosen Option : —

Q.25 As per the Constitution ninety-first amendment act, 2003, the total number of Ministers, including the Chief Minister, in the Council of Ministers in a State cannot exceed _____ of the total number of members of the Legislative Assembly of that State.

- Ans
- 1. 20%
 - 2. 25%
 - 3. 10%
 - 4. 15%

Question ID : 8161612934

Status : Answered

Chosen Option : 4