

**MP Police  
Constable**

Memory Based Paper  
18 Aug, 2023  
All Shift (Mixed)

mpcareer.in

## 100 Questions

---

**Que. 1** The last Subedar of Bengal, who was appointed by Mughal Emperor

1. Murshid Quli Khan
2. Sarfaraz Khan
3. Shuja-ud-Din Muhammad Khan
4. Alivardi Khan

Correct Option - 1

---

**Que. 2** In which of the following states is the Mamallapuram Dance Festival organised?

1. Andhra Pradesh
2. Telangana
3. Karnataka
4. Tamil Nadu

Correct Option - 4

---

**Que. 3** How many banks were nationalized in India on 15<sup>th</sup> April 1980 ?

1. 4
2. 5
3. 6
4. 8

Correct Option - 3

---

**Que. 4** Who was the 10th or last Sikh Guru?

1. Guru Angad
2. Guru Tegh Bahadur
3. Guru Nanak
4. Guru govind singh

Correct Option - 4

---

**Que. 5** What is the Brahmaputra river called in Bangladesh?

1. Padma
2. Jamuna
3. Dihang
4. Bhima

Correct Option - 2

---

**Que. 6** The famous Hornbill Festival is unique to which Northeast state of India?

1. Nagaland
2. Assam
3. Meghalaya
4. Mizoram

Correct Option - 1

---

**Que. 7** Name the Sikh Guru who developed the Gurmukhi script for writing the Punjabi language?

1. Guru Ram Das
2. Guru Hargobind
3. Guru Tegh Bahadur
4. Guru Angad

Correct Option - 4

---

**Que. 8** On 30 April 1908, who threw a bomb on a carriage at Muzzafarpur, to kill the Chief Presidency Magistrate Douglas Kingsford

1. Bhagat Singh
2. Chandra Shekhar Azad,
3. Sukhdev Thapar
4. Khudiram Bose

Correct Option - 4

---

**Que. 9** Which of the following rivers does the River Kshipra finally join?

1. Chambal
2. Betwa
3. Ken
4. Narmada

Correct Option - 1

---

**Que. 10** In \_\_\_\_\_ USA intervened in the World War I in support of Allies.

1. July 1917
2. December 1917
3. February 1918
4. April 1917

Correct Option - 4

---

**Que. 11** The closest star to the solar system is \_\_\_\_\_.

1. Alpha Centauri A
2. Alpha Centauri B
3. Proxima Centauri
4. Sirius

Correct Option - 3

---

**Que. 12** Which plateau in the eastern part of Madhya Pradesh lies in the south of the Son river valley?

1. Rewa Panna
2. Baghelkhand
3. Bundelkhand
4. Malwa

Correct Option - 2

---

**Que. 13** Who among the following has been recently sworn in as Israel's Prime Minister?

1. Ehud Olmert
2. Mohammed Salman Al Saud
3. Yair Lapid
4. Benjamin Netanyahu

Correct Option - 4

---

**Que. 14** Who among the following is the author of the book titled 'How to Avoid a Climate Disaster: The Solutions We Have and the Breakthroughs We Need'?

1. Al Gore
2. Bill Gates
3. RK Pachauri
4. Greta Thunberg

Correct Option - 2

---

**Que. 15** Ratha Jatra, the festival of Chariots of Lord Jagannatha is celebrated every year in \_\_\_\_\_.

1. Puri, Odisha
2. Sarnath, Uttar Pradesh
3. Jaipur, Rajasthan
4. Kolkata, West Bengal

Correct Option - 1

---

**Que. 16** As per Union Budget 2021-22, Fiscal deficit is estimated at \_\_\_\_\_ per cent of GDP in 2021- 22.

1. 5.1
2. 7.6
3. 6.8
4. 7.2

Correct Option - 3

---

**Que. 17** Who has been appointed the new Vice-Chairman of NITI Aayog in 2022?

1. Suman Bery
2. Pomila Jaspal
3. Manoj Soni
4. Vikram Singh Mehta

Correct Option - 1

---

**Que. 18** The shape of Indian Ocean is-

1. Triangular shape
2. Circular shape
3. Quadrilateral shape
4. S shape

Correct Option - 1

---

**Que. 19** Jog waterfall is situated on

1. Mahanadi river
2. Narmada river
3. Tapi river
4. Sharavati river

Correct Option - 4

---

**Que. 20** What kind of soil is most suitable for growing cashew nuts?

1. Black soil
2. Red laterite soil
3. Red and yellow soil
4. Alluvia soil

Correct Option - 2

---

**Que. 21**  $H_2O_2$  is Chemical formula for \_\_\_\_\_.

1. Hydrogen Oxide
2. Hydrogen Peroxide
3. Water
4. Oxygen Hydride

Correct Option - 2

---

**Que. 22** Who discovered the Polio Vaccine ?

1. Konrad Zuse
2. Jonas Salk
3. Louis Pasteur
4. Eli Whitney

Correct Option - 2

---

**Que. 23** A student by chance mixed acetone with alcohol. The mixture of acetone and alcohol can be separated by \_\_\_\_\_.

1. sublimation
2. separating funnel
3. crystallization
4. fractional distillation

Correct Option - 4

---

**Que. 24** Which of the following animals give birth to babies?

1. Hen
2. Snake
3. Lizard
4. Bat

Correct Option - 4

---

**Que. 25** Which of the following is called the amphibian of the plant kingdom?

1. Thallophyta
2. Bryophyta
3. Cryptogam
4. Phanerogam

Correct Option - 2

---

**Que. 26** Approximately how many muscles are there in a normal adult human body?

1. 340

2. 206
3. 640
4. 350

Correct Option - 3

---

**Que. 27** Percentage of energy transfer that takes place from one trophic level to another is:

1. 20%
2. 30%
3. 10%
4. 5%

Correct Option - 3

---

**Que. 28** In humans, the sound is produced by the \_\_\_\_\_.

1. Epiglottis
2. Larynx
3. Trachea
4. Vallecula

Correct Option - 2

---

**Que. 29** The earthquake waves are recorded by an instrument called:

1. Speedometer
2. Odometer
3. Richter scale
4. Seismograph

Correct Option - 4

---

**Que. 30** Amarbel (*Cuscuta*) is an example of:

1. Autotroph
2. Parasite
3. Saprotroph
4. Host

Correct Option - 2

---

**Que. 31** Which of the following plant follows both autotrophic and heterotrophic modes of nutrition?

1. Insectivorous
2. Algae
3. Fungi

4. Parasites

Correct Option - 1

---

**Que. 32** Who presented the cell theory that all the plants and animals are composed of cells and that the cell is the basic unit of life?

1. Robert Hooke
2. Virchow
3. Robert Brown
4. Schleiden and Schwann

Correct Option - 4

---

**Que. 33** Which of the following is NOT the correct match?

1. The acid present in tomato – Formic acid
2. The acid present in orange – citric acid
3. The acid present in grapes – Tartaric acid
4. The acid present in rancid butter – Butyric acid

Correct Option - 1

---

**Que. 34** Weight of the body is \_\_\_\_\_.

1. Same everywhere at the surface of the earth
2. Maximum at the poles
3. Maximum on the equator
4. Less on hills, compared to plains

Correct Option - 2

---

**Que. 35** Spiders belong to the phylum \_\_\_\_\_.

1. Mollusc
2. Annelid
3. Cnidaria
4. Arthropoda

Correct Option - 4

---

**Que. 36** **Direction:** What will be the 7th letter in the following sequence?

A, D, G, J, M, P, \_\_\_\_\_

1. V
2. R
3. T



4. S

Correct Option - 4

---

**Que. 37** Out of the given four alternatives, choose that alternative as your answer which is similar to the given words.

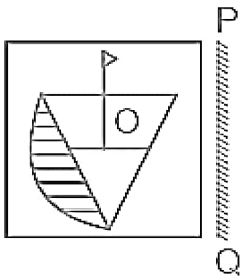
Red planet : Mars :: Gas giant : ?

1. Venus
2. Earth
3. Mercury
4. Jupiter

Correct Option - 4

---

**Que. 38** Which answer figure is the exact mirror image of the given question figure when mirror is held at PQ?



- 1.
- 2.
- 3.
- 4.

Correct Option - 3

**Que. 39** There are five boxes K, L, M, N and O, arranged one above the other. Box M is placed above box N. Box O is placed below box K. Box N is placed above K. Box L is placed below O. Which among the following is the bottom most box?

1. O
2. L
3. K
4. M

Correct Option - 2

---

**Que. 40** In the question below a statement is given followed by two assumptions 1 and 2. You have to assume everything in the statement to be true and then consider the two assumptions and decide which of them logically follows from the information given in the statement beyond any considerable doubt.

**Statement:**

Students who do not present the record book will not be allowed to appear in the practical examination.

**Assumption:**

1. Record book is mandatory for appearing in the practical examination.
2. Practical exam makes a student technically strong in a subject.

1. Only assumption 2 is implicit
2. Both assumption 1 and 2 is implicit
3. Neither assumption 1 nor 2 is implicit
4. Only assumption 1 is implicit

Correct Option - 4

---

**Que. 41** In the following question, select the related word from the given alternatives.

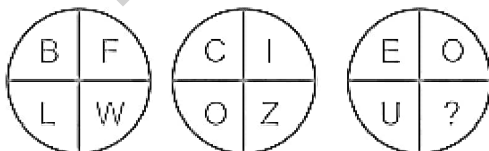
Bangladesh : Taka :: Russia : ?

1. Euro
2. Dollar
3. Rouble
4. Pound

Correct Option - 3

---

**Que. 42** In the following question, select the number which can be placed in place of the question mark (?) from the given alternatives.



1. D
2. I

3. F
4. A

Correct Option - 3

---

**Que. 43** A series is given with one term missing. Select the correct alternative from the given ones that will complete the series?

B8Y, D6W, F4U, ?

1. H2S
2. H0R
3. G2R
4. G0T

Correct Option - 1

---

**Que. 44** Read the given statements and conclusions carefully. Assuming that the information given in the statements is true, even if it appears to be at variance with commonly known facts, decide which of the given conclusions logically follow(s) from the statements.

**Statements:**

All scooters are two wheelers.

All cycles are two wheelers.

**Conclusions:**

I. All scooters are cycles.

II. All cycles are scooters.

1. Only conclusion II follows
2. Only conclusion I follows
3. Neither conclusion I nor II follows
4. Both conclusions I and II follow

Correct Option - 3

---

**Que. 45** In the following question, select the related letter/letters from the given alternatives.

EXAM : ACWR :: PASS : ?

1. LFOX
2. LOFX
3. XLOF
4. LEFX

Correct Option - 1

---

**Que. 46** DIRECTIONS: What should come in place of the question mark (?) in the following series?

720, 720, 360, 120, 30, 6, ?

1. 3
2. 2
3. 1
4. 5

Correct Option - 3

---

**Que. 47** Pallavi is 22<sup>nd</sup> from the top and Rakesh is 32<sup>nd</sup> from top in the class ranking. If they interchange their rank positions, then Pallavi becomes 15<sup>th</sup> from bottom. How many students are there in the class?

1. 36
2. 62
3. 48
4. 46

Correct Option - 4

---

**Que. 48** Manoj is the husband of Sapna, whose mother is Neelam. Neelam's grandson is Aditya, who is the brother of Shefali. Shefali is the daughter of Vijay who is the brother of Manoj's wife. How is Sapna related to Shefali?

1. Maternal Aunt
2. Daughter
3. Paternal Aunt
4. Sister

Correct Option - 3

---

**Que. 49** How many times a day do minute hand and hour hand meet?

1. 12
2. 22
3. 36
4. 360

Correct Option - 2

---

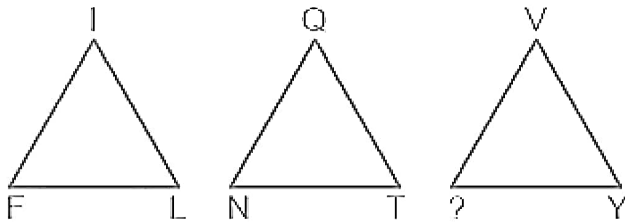
**Que. 50** Heavier coins are costlier. Ram's coin is heavier than Mohan's and costlier than Ramesh's. Naresh's coin is costlier than Ram's but lighter than Yogesh's. Ramesh's coin is costlier than Mohan's. So who is the owner of the costliest coin?

1. Ram
2. Ramesh
3. Naresh
4. Yogesh

Correct Option - 4

---

**Que. 51** Find the missing character.



1. P
2. B
3. V
4. S

Correct Option - 4

---

**Que. 52** If  $3@7 = 30$ ,  $9@6 = 135$ ,  $7@5 = 84$ , then find the value of  $4@9$ .

1. 26
2. 68
3. 52
4. 65

Correct Option - 3

---

**Que. 53** Radha walks 10m towards North, then she turns left and walks 30m. She again turns left and walks 10m. Further, she moves 10 m after turning to right. How far is she from her original position?

1. 50 m
2. 60 m
3. 70 m
4. 40 m

Correct Option - 4

---

**Que. 54** If  $AT = 20$  and  $BEG = 70$ , then  $BANK = \underline{\hspace{2cm}}$ .

1. 318
2. 308
3. 228
4. 282

Correct Option - 2

---

**Que. 55** Abhishek starting from his house and goes 5 km in the East, then he turns to his right and goes 12 km. What minimum distance will be covered by him to come back to his house?

1. 10

2. 14
3. 13
4. 15

Correct Option - 3

**Que. 56** Study the given pattern carefully and select the number that can replace the question mark (?) in it.

5	7	74
4	6	52
8	13	?

1. 105
2. 213
3. 233
4. 126

Correct Option - 3

**Que. 57** Read the given statement(s) and assumptions carefully and select which of the following assumptions is/are implicit(s) in below statement(s):

**Statement:**

If you want to be trained well in aerobics, take the training from aerobics expert Manisha.

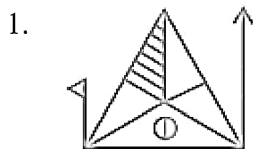
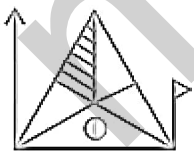
**Assumptions:**

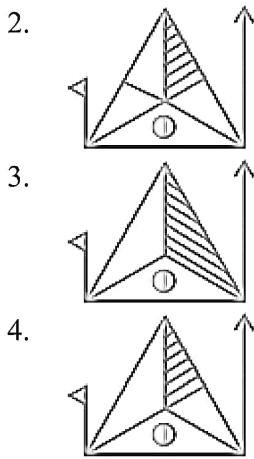
- I. Manisha is the best aerobic trainer in India.
- II. There are no other trainers in aerobics except Manisha.

1. Neither I nor II is implicit.
2. Only assumption II is implicit.
3. Only assumption I is implicit.
4. Both I and II are implicit.

Correct Option - 1

**Que. 58** Select the correct mirror image of the given figure when the mirror is placed at the right side of the figure.





Correct Option - 2

**Que. 59** In a certain code language, "STONE" is written as "TUPOF". How will "HORNE" written in that code language?

1. ISFOP
2. IPSOF
3. IPROF
4. FOSPI

Correct Option - 2

**Que. 60** Given question has main statement followed by four statements. Choose the ordered pair of statements, where the first statement implies the second, and the two statements are logically consistent with the main statement.

You either play tennis or watch football.

- A. You played tennis.
- B. You did not play tennis.
- C. You watched football.
- D. You did not watch football.

1. AB
2. DA
3. CD
4. AC

Correct Option - 2

**Que. 61** For a standard clock, what is the angle between the hour hand and the minute hand when the clock shows 2:20?

1.  $105^\circ$
2.  $50^\circ$
3.  $35^\circ$
4.  $120^\circ$

Correct Option - 2

**Que. 62** Given question has main statement followed by four statements. Choose the ordered pair of statements, where the first statement implies the second, and the two statements are logically consistent with the main statement.

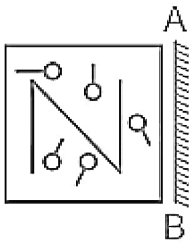
You either read novels or write essays.

- A. You read novels.
- B. You did not read novels.
- C. You wrote essays.
- D. You did not write essays.

- 1. CD
- 2. AB
- 3. CA
- 4. DA

Correct Option - 4

**Que. 63** If the mirror is placed on the line AB, then which of the answer figures is the right image of the given figure?



- 1.
- 2.
- 3.
- 4.

Correct Option - 3



---

**Que. 64** Select the option that represents the letters that, when sequentially placed from left to right in the following blanks, will complete the letter-series.

Y \_ R E \_ Y T \_ \_ Q \_ T R \_ Q Y T \_ E \_

1. TRQEYERQ
2. TTREYERR
3. TQREYERQ
4. TQYEYERQ

Correct Option - 3

---

**Que. 65** Given question has main statement followed by four statements. Choose the ordered pair of statements, where the first statement implies the second, and the two statements are logically consistent with the main statement.

The restaurant will either serve Italian cuisine or Asian cuisine.

- A. The restaurant will not serve Italian cuisine.
- B. The restaurant will serve Asian cuisine.
- C. The restaurant will serve Italian cuisine.
- D. The restaurant will not serve Asian cuisine.

1. AC
2. AB
3. BC
4. DA

Correct Option - 2

---

**Que. 66** In a certain code, 'POST' is written as '70', and 'FLAG' is written as '26', then how will 'BIRD' be written in the same code language?

1. 42
2. 56
3. 33
4. 80

Correct Option - 3

---

**Que. 67** Select the option that has the same relation to the third word as the second word to the first word?  
Ganga : India :: Nile : ?

1. Pakistan
2. Egypt
3. America
4. Australia

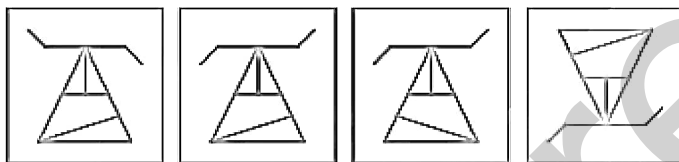
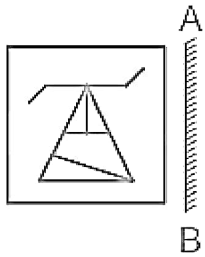
Correct Option - 2

**Que. 68** If  $5 \$ 4 @ 3 = 23$  and  $6 \$ 3 @ 9 = 27$ , then  $7 \$ 4 @ 6 = ?$

1. 32
2. 20
3. 27
4. 34

Correct Option - 4

**Que. 69** Which of the answer figure is exactly the mirror image of the given figure, when the mirror is placed on the line AB



(a) (b) (c) (d)

1. a
2. b
3. c
4. d

Correct Option - 1

**Que. 70** In a certain code language, MODERN is coded as QSHIVR. Which of the given options would be coded as WMIRG in that language?

1. SINEC
2. SEINC
3. SIENC
4. SNEIC

Correct Option - 3

**Que. 71** If the compound interest on a principal for one year is ₹350 and the compound interest for the second year is ₹420, find the rate of interest.

1. 30%
2. 20%
3. 25%
4. 15%

Correct Option - 2

---

**Que. 72** Which of the following number is divisible by 6?

1. 23562
2. 43742
3. 53422
4. 44444

Correct Option - 1

---

**Que. 73** 5 pencils and 6 erasers cost is equal to 33 rupees and the cost a pencil and an eraser is 6 rupees, find out the cost of eraser.

1. 1
2. 2
3. 3
4. 4

Correct Option - 3

---

**Que. 74** A bag contains Rs. 210 in the form of one-rupee coins, 50 Paise coins and 25 Paise coins in the ratio 3 : 5 : 6. The number of 25 Paise coins in the bag is:

1. 30
2. 90
3. 150
4. 180

Correct Option - 4

---

**Que. 75** The price of two types of rice is Rs. 15/kg and Rs. 20/kg. If both the types are mixed in the ratio 3 : 2 respectively, then what is the price per kg of the mixed variety of rice?

1. Rs. 18
2. Rs.16
3. Rs.15
4. Rs.17

Correct Option - 4

---

**Que. 76** If  $3(5x + 7) + 4(x - 13) = 25x - 7$ , then what is the value of  $\frac{3x+7}{4}$  ?

1.  $\frac{-5}{4}$
2.  $\frac{5}{4}$
3.  $\frac{13}{2}$
4.  $-\frac{5}{2}$

Correct Option - 1

---

**Que. 77** What is the compound interest for 1 year on a sum of Rs.18000 at the annual rate of 20 percent per annum compounding half yearly?

1. Rs. 3780
2. Rs. 2450
3. Rs. 4500
4. Rs. 3650

Correct Option - 1

---

**Que. 78** What is the largest 4-digit number that is divisible by each of 14, 18, and 24?

1. 9999
2. 9996
3. 9886
4. 9576

Correct Option - 4

---

**Que. 79** Mohit buys an old bicycle for Rs. 2700 and spends Rs. 500 on its repairs. If he sells the bicycle for Rs. 3520, then what is his profit percentage?

1. 10%
2. 12.5%
3. 15%
4. 20%

Correct Option - 1

---

**Que. 80** A person marks his goods 30% above the cost price and allows 20% discount on the marked price. His loss/gain percent is

1. loss 4%
2. gain 4%
3. gain 10%
4. no loss/gain

Correct Option - 2

---

**Que. 81** If the area of an equilateral triangle is  $12\sqrt{3} \text{ m}^2$ , then what is the value (in metres) of its height?

1. 4.5
2. 6.5
3. 6
4.  $4\sqrt{3}$

Correct Option - 3

---

**Que. 82** What should come at the place of '?' in the following question?

$$125^{1/3} \times 27^{1/3} \times 125^{4/3} = 15 \times 5^?$$

1. 5
2. 3
3. 1
4. 4

Correct Option - 4

---

**Que. 83** Four bells ring at intervals of 8, 12, 16 and 28 seconds. They start ringing simultaneously at 1.00 AM. At what time will they again ring simultaneously?

1. 2 hrs 3 minutes 23 seconds
2. 2 hours 2 minutes 36 seconds
3. 1 hrs. 5 minutes 36 seconds
4. 1 hrs 5 minutes 48 seconds

Correct Option - 3

---

**Que. 84** The least number which is a perfect square and is divisible by each of the numbers 16, 20 and 24 is:

1. 1600
2. 3600
3. 6400
4. 14400

Correct Option - 2

---

**Que. 85** The sum of the radius of the base and slant height of a right circular cone is 49 cm. If the total surface area is  $1848 \text{ cm}^2$ ,

then its height is:

(Take  $\pi = \frac{22}{7}$ )

1. 36 cm

2. 35 cm
3. 30 cm
4. 32 cm

Correct Option - 2

---

**Que. 86** The value of  $\frac{3+\sqrt{6}}{5\sqrt{3}-2\sqrt{12}-\sqrt{32}+\sqrt{50}} + \sqrt{7-4\sqrt{3}}$  is:

1. 2
2. 4
3.  $2\sqrt{3}$
4.  $\sqrt{3}$

Correct Option - 1

---

**Que. 87** Three dices are rolled down simultaneously, then what is probability of getting a sum of 5?

1.  $1/72$
2.  $1/36$
3.  $1/48$
4.  $1/56$

Correct Option - 2

---

**Que. 88** In an examination, the full mark is 600, A gets 25% more than B, B gets 60% more than C, and C gets 20% less than D. If A got 400 marks, then what is the percentage of full marks did D get?

1.  $43\frac{2}{3}\%$
2.  $43\frac{2}{6}\%$
3.  $41\frac{2}{3}\%$
4.  $41\frac{2}{6}\%$

Correct Option - 3

---

**Que. 89** If  $2x - 3y = 79$  and  $x + 6y = 47$ , then the value of  $(x - y)$  is-

1. 44
2. 40
3. 42
4. 38

Correct Option - 2

---

**Que. 90**  $\left[ \left( \frac{2}{13} \right)^{-6} \div \left( \frac{2}{13} \right)^3 \right]^3 \times \left( \frac{2}{13} \right)^{-9} = \underline{\hspace{2cm}}$

1.  $[2/13]^{-36}$
2.  $[-2/13]^{-16}$
3.  $[-2/13]^{36}$
4.  $[-2/13]^{26}$

Correct Option - 1

---

**Que. 91** In a certain school, 20% of students are below 8 years of age. The number of students above 8 years of age is  $\frac{2}{3}$  of the number of students of 8 years of age which is 48. What is the total number of students in the school?

1. 72
2. 80
3. 120
4. 100

Correct Option - 4

---

**Que. 92** The average marks obtained in a subject by 60 students in a class is 82. The average marks of boys and girls in that subject are 75 and 85 respectively. The number of boys in the class is:

1. 26
2. 32
3. 18
4. 30

Correct Option - 3

---

**Que. 93** If  $60\%$  of  $400 + k\%$  of  $280 = 296$ , then the value of  $k$  is :

1.  $\frac{68}{7}$
2. 20
3. 28
4. 33

Correct Option - 2

---

**Que. 94** Which of the following options is NOT divisible by 18?

1. 571032
2. 732546
3. 245798
4. 459018

Correct Option - 3

---

**Que. 95** The salaries of A, B and C are in the ratio 3 : 4 : 5. If their salaries are increased by 10%, 15% and 20% respectively, find the new ratio of their salaries.

1. 32 : 47 : 61
2. 33 : 46 : 60
3. 46 : 33 : 61
4. 31 : 32 : 33

Correct Option - 2

---

**Que. 96** A rectangle has sides in the ratio 1 : 4. Consider a square with the same area as the rectangle, then what will be the ratio of the perimeter of the rectangle to square?

1. 4 : 5
2. 5 : 4
3. 3 : 2
4. 2 : 3

Correct Option - 2

---

**Que. 97** A washing machine marked at ₹28,000 is sold at two successive discounts of 15% and 10%. An additional discount of 5% is offered for cash payment. The selling price of the washing machine at cash payment is:

1. ₹21,458
2. ₹19,568
3. ₹20,349
4. ₹18,851

Correct Option - 3

---

**Que. 98** A mixture contains two kinds of oils, A and B in the ratio of 7 : 9. On adding 8 litres of oil B to the mixture, the ratio of the two oils A and B becomes 14 : 19. What is the quantity of oil A (in litres) in the mixture?

1. 153
2. 133
3. 152
4. 112

Correct Option - 4

---

**Que. 99** The compound interest on a certain sum at  $16\frac{2}{3}\%$  per annum for 3 years is Rs. 635. What will be the simple interest on the same sum at the same rate for double the time?

1. Rs. 540



2. Rs. 1270
3. Rs. 1080
4. Rs. 810

Correct Option - 3

---

**Que. 100** If the cost price of 5 apples is equal to the selling price of 3 apples then find the profit or loss percentage?

1. 33.33% profit
2. 66.66% profit
3. 33.33% loss
4. 66.66% loss

Correct Option - 2

mpcareer.in