

**MP Police
Constable**

Memory Based Paper
19 Aug, 2023
All Shift (Mixed)

mpcareer.in

100 Questions

Que. 1 Which of the following function is not related to RBI

1. Credit control
2. Issue of currency notes
3. Lending of money to public
4. Lender of the money to commercial banks as a last resort

Correct Option - 3

Que. 2 Who is regarded as the father of modern economics?

1. Manmohan Singh
2. Adam Smith
3. Amartya Sen
4. John Maynard Keynes

Correct Option - 2

Que. 3 Kolam is a traditional folk art of which state?

1. Haryana
2. Uttar Pradesh
3. Gujrat
4. Kerala

Correct Option - 4

Que. 4 Which state Nanda Devi is in?

1. Uttarakhand
2. Haryana
3. Punjab
4. Himachal Pradesh

Correct Option - 1

Que. 5 The third day of the festival of Pongal is known as _____.

1. Bhogi Pandigai
2. Surya Pongal/ Thai Pongal
3. Katya Pongal
4. Mattu Pongal

Correct Option - 4

Que. 6 Which ocean is 'S' shaped?

1. Pacific Ocean
2. Atlantic ocean
3. Mediterranean
4. Indian Ocean

Correct Option - 2

Que. 7 In which year the capital of India was shifted from Calcutta to Delhi?

1. 1905
2. 1911
3. 1931
4. 1947

Correct Option - 2

Que. 8 What is the animal on the insignia of the RBI?

1. Lion
2. Tiger
3. Panther
4. Elephant

Correct Option - 2

Que. 9 Who among the following cricketers has won the ICC Spirit of Cricket Award 2020?

1. MS Dhoni
2. Rohit Sharma
3. Virat Kohli
4. Hardik Pandya

Correct Option - 1

Que. 10 Ashoka appointed religious officials, known as:

1. Dhamma-mahamatta
2. Dhammadhiraja
3. Dhammadhikari
4. Dhammadhyaksha

Correct Option - 1

Que. 11 According to IMF, World Economic Outlook (April 2021), what is the rank of India with respect to GDP per capita (unweighted list) out of total 194 economies?

1. 136
2. 144
3. 152
4. 149

Correct Option - 2

Que. 12 In November 2021, who turned author with her first novel 'Lal Salaam'?

1. Jhumpa Lahiri
2. Arundhati Roy
3. Nirmala Sitharaman
4. Smriti Zubin Irani

Correct Option - 4

Que. 13 In which state is the Sarhul festival celebrated?

1. Chhattisgarh
2. Gujarat
3. Jharkhand
4. Assam

Correct Option - 3

Que. 14 Who was the President of the Chinese Revolutionary League?

1. Dr. Sun Yat Sen
2. Mao Zedong
3. Tong Meng Hui
4. Yuan Shikai

Correct Option - 1

Que. 15 Which Gharana did Krishn Rao Pandit's singing belong to?

1. Maihar Gharana
2. Indore Gharana
3. Gwalior Gharana
4. None of these

Correct Option - 3

Que. 16

In which year was the Battle of Talikota fought between the Vijayanagara Empire and the Deccan sultanates?

1. 1561 AD
2. 1556 AD
3. 1565 AD
4. 1575 AD

Correct Option - 3

Que. 17 Who was the Governor General of India during the revolt of 1857?

1. Lord Hastings
2. Lord Canning
3. Lord Amherst
4. Lord Auckland

Correct Option - 2

Que. 18 The Trimbakeshwar is the origin of which of the following rivers?

1. Mahanadi
2. Tapti
3. Ravi
4. Godavari

Correct Option - 4

Que. 19 What percentage of coffee produced in India is exported?

1. ~ 20
2. ~ 70
3. ~ 10
4. ~ 50

Correct Option - 2

Que. 20 The Commission for Agriculture Cost and Prices (CACCP), earlier named as Agriculture Prices Commission, was established in:

1. January 1965
2. January 1956
3. December 1965
4. December 1975

Correct Option - 1

Que. 21 An object is released from a certain height above the ground. Just at the time it touches the ground, it will possess _____.

1. heat energy
2. chemical energy
3. kinetic energy
4. potential energy

Correct Option - 3

Que. 22 What is the SI unit of speed?

1. m/s
2. km/h
3. m/minute
4. km/s

Correct Option - 1

Que. 23 Who is known as the 'Father of White Revolution' and 'Milkman of India'?

1. M S Swaminathan
2. H M Dalaya
3. Tribhuvandas Patel
4. Verghese Kurien

Correct Option - 4

Que. 24 Which of the following plants belongs to Bryophyta?

1. Marsilea
2. Deodar
3. Cladophora
4. Marchantia

Correct Option - 4

Que. 25 Which of the following is used as a biofertilizer for soya bean cultivation?

1. Nostoc
2. Azospirillum
3. Rhizobium
4. Azotobacter

Correct Option - 3

Que. 26 Radioactive elements are placed in _____.

1. Actinide
2. Lanthanide
3. Period 6
4. Period 7

Correct Option - 1

Que. 27 Theory of Relativity was given by:

1. Archimedes
2. Albert Einstein
3. Sir Isaac Newton
4. Charles Darwin

Correct Option - 2

Que. 28 Behind the cornea, there is a dark muscular structure called the _____.

1. retina
2. pupil
3. iris
4. lens

Correct Option - 3

Que. 29 Butterflies belong to which animal phylum?

1. Chordata
2. Annelida
3. Bryozoa
4. Arthropoda

Correct Option - 4

Que. 30 The element having tetra-atomic atomicity is _____ .

1. Helium
2. Nitrogen
3. Phosphorous
4. Chlorine

Correct Option - 3

Que. 31 Why are the soles of the shoes treaded?

1. To give the shoes more protection

2. To decrease friction
3. To increase friction
4. To increase life of the shoes

Correct Option - 3

Que. 32 Far sightedness is also known as:

1. Presbyopia
2. Myopia
3. Hypermetropia
4. None of the above

Correct Option - 3

Que. 33 Which of the following is called vaccinia in Latin?

1. Cowpox
2. AIDS
3. Smallpox
4. Malaria

Correct Option - 1

Que. 34 Which one of the following elements is considered as a 'micronutrient' in plants?

1. P
2. Mg
3. Ca
4. Zn

Correct Option - 4

Que. 35 What is the formula for Plaster of Paris?

1. CH_3COOH
2. $(\text{NH}_4)_2\text{SO}_4$
3. $\text{CaSO}_4 \cdot 1/2\text{H}_2\text{O}$
4. CaSO_4

Correct Option - 3

Que. 36 Rohan walks 10 km towards north from a point A. Then he turns right and walks 6 km. Then, he again turns right and walks 10 km. In which direction is he now from the starting point?

1. North

2. North - east
3. East
4. South - east

Correct Option - 3

Que. 37 In a certain code, RAT = 39 and HORSE = 65, what will be TIGER?

1. 75
2. 86
3. 59
4. 50

Correct Option - 3

Que. 38 Given question has main statement followed by four statements. Choose the ordered pair of statements, where the first statement implies the second, and the two statements are logically consistent with the main statement.

The caterer is going to serve either on glass plates or on disposables

- A. The caterer is going to serve on glass plates
- B. The caterer is not going to serve glass plates
- C. The caterer is going to serve on disposables
- D. The caterer is not going to serve on disposables

1. DA
2. AB
3. CA
4. BD

Correct Option - 1

Que. 39 Select the letter from among the given options that can replace the question mark (?) in the following series.

G, K, O, S, W, A, ?

1. J
2. E
3. G
4. C

Correct Option - 2

Que. 40 Select the correct alternative to indicate the arrangement of the following words in a logical and meaningful order.

1. Lucknow
2. India

3. Uttar Pradesh

4. World

5. Asia

1. 3, 1, 4, 5, 2
2. 1, 3, 4, 2, 5
3. 1, 3, 2, 5, 4
4. 1, 3, 2, 4, 5

Correct Option - 3

Que. 41 Select the option that is related to the third word in the same way as the second word is related to the first word.

Germany : Euro :: Myanmar : ?

1. Dollar
2. Kyat
3. Dinar
4. Pound

Correct Option - 2

Que. 42 Suman walks 10 km towards West. She turns right and walks 13 km. She then turns to her right and walks 10 km. Finally, she turns right and walks 23 km. In which direction is the starting point from the endpoint?

1. North
2. West
3. East
4. South

Correct Option - 1

Que. 43 If A denotes '+', B denotes '×', C denotes '-' and D denotes '÷', then what will come in place of '?' in the following equation?

17 A (31 B 3) C (64 D 8) A 41 C (21 B 4) = ?

1. 69
2. 59
3. 61
4. 55

Correct Option - 2

Que. 44 If PROBABLE Is coded as OORABLBF, then how would TELEGRAM be coded?

1. SFMDFARN

2. SLEGEARN
3. ULEGEARL
4. SLEEGARN

Correct Option - 2

Que. 45 Given below is a statement followed by two assumptions. Decide which of the assumptions is/are implicit in the given statement.

Statement:

A teacher warns the students, "If you don't complete the homework, I will call your parents."

Assumptions:

- I. All students don't complete homework.
- II. With the warning, all the students may complete the homework.

1. Both the assumptions are implicit.
2. None of the assumptions is implicit.
3. Only assumption II is implicit.
4. Only assumption I is implicit.

Correct Option - 3

Que. 46 During Republic Day parade at India Gate, Deepak is ninth from the front in a troop of 49 soldiers. Sam is 29th from the back of the troop. How many soldiers are marching in between Sam and Deepak?

1. 11
2. 10
3. 12
4. 9

Correct Option - 1

Que. 47 Which of the following two signs needs to be interchanged to make the given equation **correct**?

$$24 - 8 \div 4 + 5 \times 3 = 14$$

1. \div and \times
2. \times and $-$
3. $+$ and \div
4. \div and $-$

Correct Option - 4

Que. 48 A series is given with one term missing. Select the correct alternative from the given ones that will complete the series.

C3V, F8S, I19P,?, O89J

1. L38K

2. L42M
3. M42L
4. L44L

Correct Option - 2

Que. 49 Given question has main statement followed by four statements. Choose the ordered pair of statements, where the first statement implies the second, and the two statements are logically consistent with the main statement.

You are god fearing if you are religious

- A. you are religious
- B. you are not religious
- C. You are god fearing
- D. You are not god fearing

1. BA
2. CB
3. DB
4. AB

Correct Option - 3

Que. 50 Five movies F1, F2, F3, F4 and F5 (not necessarily in the same order) are displayed from Monday to Friday. Only one movie is displayed on one day. Each movie is displayed only one time. Movie F1 is displayed on Monday. Two movies are displayed between F4 and F5. F2 is displayed just one day after F5. Which movie is displayed on Wednesday?

1. F2
2. F5
3. F4
4. F3

Correct Option - 1

Que. 51 Select the combination of letters that when sequentially placed in the blanks of the given series will complete the series.

r _ x l _ q _ _ x _ p q _ e _ l p _

1. e, p, r, e, l, r, x, q
2. p, e, r, p, l, r, x, q
3. e, x, q, r, p, l, x, p
4. p, e, q, l, x, p, r, q

Correct Option - 1

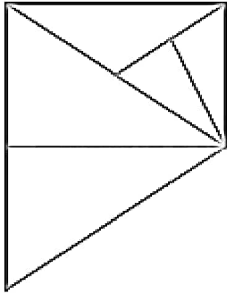
Que. 52 In the following question, select the related words from the given alternatives.

Red : Color :: Teaching : ?

1. School
2. Chalk
3. Education
4. Occupation

Correct Option - 4

Que. 53 How many triangles are there in the given figure?



1. 6
2. 7
3. 8
4. 9

Correct Option - 3

Que. 54 Three statements are given followed by three conclusions numbered I, II and III. Assuming the statements to be true, even if they seem to be at variance with commonly known facts, decide which of the conclusions logically follow(s) from the statements.

Statements:

All gloves are bats.

All stumps are bats.

All bats are balls.

Conclusions:

I. All stumps are balls.

II. Some balls are gloves.

III. Some gloves are stumps.

1. All conclusions follow
2. Only conclusions I and II follow
3. Only conclusions I and III follow
4. Only conclusions II and III follow

Correct Option - 2

Que. 55

A series is given with one term missing. Select the correct alternative from the given options that will complete the series.

7, 8, 18, 57, 232, ?

1. 1168
2. 1165
3. 1162
4. 1160

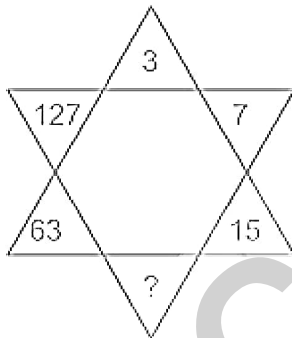
Correct Option - 2

Que. 56 Riya is younger than Ram. Kishan is younger than Ram but elder than Riya. Sandhya is elder than Sheetal and Ram both. Ram is younger than Sheetal. Among these five, who is the third youngest?

1. Riya
2. Ram
3. Sheetal
4. Kishan

Correct Option - 2

Que. 57 Find the missing number in diagram?



1. 31
2. 33
3. 27
4. 32

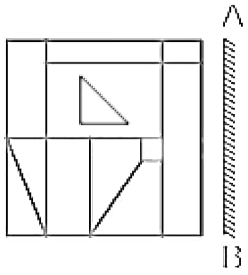
Correct Option - 1

Que. 58 If $3 \times 4 \times 9 \times 3 = 4933$ and $4 \times 6 \times 2 \times 1 = 6241$, then $1 \times 6 \times 3 \times 2 = ?$

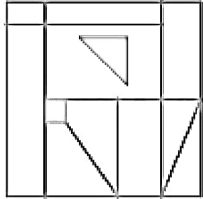
1. 3261
2. 1263
3. 6312
4. 2631

Correct Option - 3

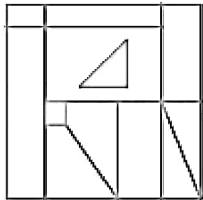
Que. 59 If a mirror is placed on the line AB, then which of the given answer figures will be the correct image of the question figure?



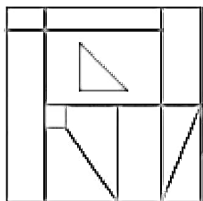
1.



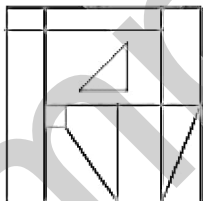
2.



3.



4.



Correct Option - 4

Que. 60 If TANGENT is coded NATGTNE, then how is MUSTARD coded?

1. MUSTDRA
2. DRATMUS
3. SUMTPRA
4. SUMTDRA

Correct Option - 4

Que. 61 Select the letter that will replace the question mark (?) in the given series.
E, G, L, V, ?

1. P
2. S
3. M
4. G

Correct Option - 3

Que. 62 Shashwat goes 15 metres towards south from a point P and then after turning to left he goes 8 metres. He again turns left and goes 30 metres. How far and in which direction is he now from his starting point?

1. 15 metres, South-east
2. 15 metres, North-east
3. 17 metres, North-west
4. 17 metres, North-east

Correct Option - 4

Que. 63 In a certain code language, 'MACHINE' is written as AMEJKEN. How will 'THUNDER' be written in the same code language?

1. HTWPFRE
2. HTVQERE
3. ITWPFRD
4. REWPFHT

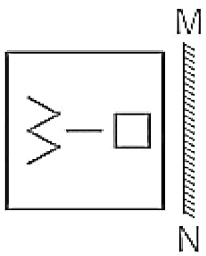
Correct Option - 1

Que. 64 Four number-pairs are given out of which three are alike in a certain way and one is different. Select the number-pair that is different from the rest.

1. 17 : 65
2. 82 : 101
3. 49 : 26
4. 50 : 122

Correct Option - 3

Que. 65 If a mirror is placed on the line AB, then which of the given answer figures will be the correct image of the question figure?



- 1.
- 2.
- 3.
- 4.

Correct Option - 1

Que. 66 DIRECTIONS: What should come in place of the question mark (?) in the following series?
5, 6, ?, 40, 89, 170, 291

1. 15
2. 89
3. 6
4. 40

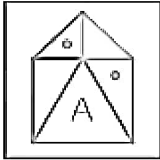
Correct Option - 1

Que. 67 A clock which is accurate shows 08:00 in the morning how many degrees will the hour hand move when it will show 04:00 in the evening?

1. 180 degrees
2. 240 degrees
3. 320 degrees
4. 270 degrees

Correct Option - 2

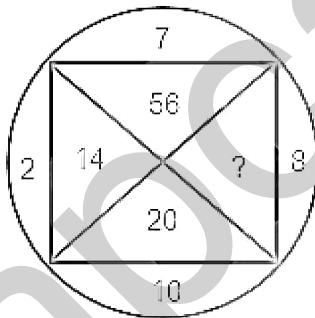
Que. 68 Which option represents the water image of the given figure?



- 1.
- 2.
- 3.
- 4.

Correct Option - 1

Que. 69 Find the missing number from the below options.



1. 80
2. 70
3. 140
4. 77

Correct Option - 1

Que. 70 In a code language, LANCER is written as NALREC. How will NORWAY be written in that language?

1. YAWNOR
2. RNOYAW
3. RONYAW
4. YAWRON

Correct Option - 3

Que. 71 For what value of m will the system of equations $17x + my + 102 = 0$ and $23x + 299y + 138 = 0$ have infinite number of solutions ?

1. 221
2. 223
3. 220
4. 219

Correct Option - 1

Que. 72 Which of the following numbers are divisible by 2, 3 and 5?

1. 5467760
2. 1345678
3. 2345760
4. 2456732

Correct Option - 3

Que. 73 The cost of 3 kg potatoes and 2 kg tomatoes is Rs. 32 and that of 1 kg potato and 4 kg tomatoes of the same type is Rs. 39. The costs (in Rs.) of potatoes and tomatoes per kg. are respectively :

1. 3 and $\frac{17}{2}$
2. 5 and $\frac{17}{2}$
3. 18 and 5
4. 5 and 17

Correct Option - 2

Que. 74 If diagonal of a square is $6\sqrt{2}$ cm. What is the area of the square?

1. 36 cm^2
2. 40 cm^2
3. 25 cm^2
4. 16 cm^2

Correct Option - 1

Que. 75 Two dice are thrown simultaneously. Find the probability that the sum of the numbers is less than 15.

1. 1
2. 2
3. 3
4. 2.5

Correct Option - 1

Que. 76 The HCF and LCM of two different numbers both greater than 13, are 13 and 273 respectively. Then the sum of the numbers is:-

1. 290
2. 288
3. 286
4. 130

Correct Option - 4

Que. 77 Find the amount if a sum of Rs. 7,500 is invested on compound interest at 8% p.a. for 1.5 years when the interest is compounded half yearly.

1. Rs. 8,436.48
2. Rs. 8,736.48
3. Rs. 8,657.48
4. Rs.8,564.48

Correct Option - 1

Que. 78 the cost price of 20 article is equal to the selling price of 15 articles. The profit percent is:

1. 20%
2. $66\frac{2}{3}\%$
3. $16\frac{2}{3}\%$
4. $33\frac{1}{3}\%$

Correct Option - 4

Que. 79 If a shopkeeper gives 1 item free on purchase of 10 items, how much percent discount is given?

1. 100/11
2. 15
3. 11/11
4. 25

Correct Option - 1

Que. 80 Three friends P, Q and R are running along a circular track with speed of 11 kmph, 6 kmph, and 12 kmph respectively. If the radius of the circular park is 420 m then after what time will they meet?

1. 3.24 hours
2. 1.32 hours
3. 2.64 hours
4. 1.84 hours

Correct Option - 3

Que. 81 Find the LCM and HCF of 0.24, 0.6, 1.8, and 1.2

1. 3.6, 0.12
2. 7.2, 0.06
3. 7.2, 0.04
4. 1.8, 0.06

Correct Option - 1

Que. 82 Which of the following numbers will have an even number of factors?

1. 1600
2. 52900
3. 30000
4. 36100

Correct Option - 3

Que. 83 In how much time will ₹6,25,000 become ₹8,31,875 at 10% per annum, compounded annually?

1. 2 years
2. 4 years
3. 3 years
4. 6 years

Correct Option - 3

Que. 84 If 30% of $(x + y) = 60%$ of $(x - y)$, then y will be ___ of x .

1. 50%
2. 20%
3. 25%
4. 33.33%

Correct Option - 4

Que. 85 In 4 years at simple interest the principal increases by 12%. Calculate the amount (in Rs.) received at the end of 2 years on Rs. 20,000 at the same rate if compounded annually?

1. 21632
2. 21218
3. 22472
4. 22400

Correct Option - 2

Que. 86 Simplify $(256)^{0.16} \times (256)^{0.09} = ?$

1. 64
2. 4
3. 16
4. 256.25

Correct Option - 2

Que. 87 The rectangular plot whose length and breadth are in the respective ratio 5 : 3 has a length of 65 m. Find the cost of fencing the plot leaving a gap of 3m for the gate at Rs. 90 per metre.

1. 18720
2. 17540
3. 18000
4. 18450

Correct Option - 4

Que. 88 The population of a village increased from 90000 to 98000 in 1 year. Find the rate of growth of population. (Rounded off to one decimal place)

1. 7.6%
2. 8.9%
3. 6.2%
4. 9.2%

Correct Option - 2

Que. 89 In a group of persons, 70% of the persons are male and 30% of the persons are married. If two-sevenths of the males are married, what fraction of the females is single?

1. $\frac{2}{7}$
2. $\frac{1}{3}$
3. $\frac{3}{7}$
4. $\frac{2}{3}$

Correct Option - 4

Que. 90 Simplify:

$$3\frac{3}{5} \times 3\frac{3}{5} + 2 \times 3\frac{3}{5} \times \frac{2}{5} + \frac{2}{5} \times \frac{2}{5}$$

1. 15
2. 16
3. 17
4. 18

Correct Option - 2

Que. 91 By selling a cycle for Rs.2560, Rajesh incurs a loss of 20 percent. What should be the selling price to make 10% profit in selling the same cycle?

1. 3530
2. 3630
3. 3410
4. 3520

Correct Option - 4

Que. 92 The HCF of $\frac{1}{2}$, $\frac{3}{4}$, $\frac{5}{6}$ and $\frac{7}{8}$ is:

1. $\frac{105}{2}$
2. $\frac{1}{24}$
3. $\frac{7}{24}$
4. $\frac{1}{48}$

Correct Option - 2

Que. 93 14 L 280 mL of orange juice and 18 L 830 mL of carrot juice were mixed together. This mixture was filled in 15 bottles each containing 1.5 L. How much mixture was left?

1. 11 L 105 mL
2. 9 L 610 mL
3. 11 L 605 mL
4. 10 L 610 mL

Correct Option - 4

Que. 94 The present ages of Ajay and Vijay are in the ratio 4 : 3. Five years from now, their ages will be in the ratio 9 : 7. Then, Vijay's present age is:

1. 26 years

2. 30 years
3. 22 years
4. 34 years

Correct Option - 2

Que. 95 If $7^{m+1} = 2401$, then find the value of 2^{2m+2} .

1. 224
2. 256
3. 264
4. 286

Correct Option - 2

Que. 96 Perimeters of a rectangle and a square are equal. Perimeter of the square is 96 cm and breadth of the rectangle is 4 cm less than the side of the square. Then two times the area (in square cm) of the rectangle is

1. 560
2. 960
3. 1040
4. 1120

Correct Option - 4

Que. 97 A milkman claims to sell milk at its cost price only, but he is making a profit of 20% since he has mixed some amount of water in the milk. What is the percentage of milk in the mixture?

1. 80%
2. $\frac{250}{3}\%$
3. 75%
4. $\frac{200}{3}\%$

Correct Option - 2

Que. 98 The least number which when divided by 4, 6, 8, 12 and 16 leaves a remainder of 2 in each case is:

1. 46
2. 48
3. 50
4. 56

Correct Option - 3

Que. 99 The value of 30% of $3000 + \sqrt{289} - 897$ is:

1. 20
2. -29
3. 41
4. 62

Correct Option - 1

Que. 100 The simple interest on a certain sum of ₹ P at a rate of r% per annum for 3 years is Rs.11,250 and the compound interest on the same sum for 2 years at the same rate percent p.a. is ₹ 7,650. What is the value of P and r, respectively?

1. ₹ 93750 and 4%
2. ₹ 93750 and 5%
3. ₹ 92500 and 6%
4. ₹ 92500 and 7%

Correct Option - 1

mpcareer.in