

SSC MTS 2023 Tier 1 Sept 1 Shift 3 Question Paper with Answers

Roll Number	
Candidate Name	
Exam Date	01/09/2023
Exam Time	4:00 PM - 6:00 PM
Subject	MTS Non Tech Havaladar CBIC and CBN Examination 2023

Section : Numerical and Mathematical Ability

Q.1 The surface area of a sphere is 5544 cm^2 . If the radius of the sphere is doubled, then find the surface area of the new sphere (in cm^2).

- Ans**
- 1. 22,176
 - 2. 22,761
 - 3. 20,761
 - 4. 20,176

Question ID : 264330156018

Option 1 ID : 264330611474

Option 2 ID : 264330611472

Option 3 ID : 264330611471

Option 4 ID : 264330611473

Status : Answered

Chosen Option : 1

Q.2 A sailor rows a boat 36 km downstream and 24 km upstream in 6 hours. When it rows 24 km downstream and 36 km upstream the sailor takes 6 and half hours. Then the speed of the current is:

- Ans**
- 1. 1.5 km/h
 - 2. 4 km/h
 - 3. 3 km/h
 - 4. 2 km/h

Question ID : 264330154057

Option 1 ID : 264330603692

Option 2 ID : 264330603694

Option 3 ID : 264330603693

Option 4 ID : 264330603691

Status : Answered

Chosen Option : 4

Q.3 From a cuboid of dimension of $8 \times 6 \times 6$ units, small cubes of dimension $0.5 \times 0.5 \times 0.5$ unit are cut. How many small cubes can be cut from the big cuboid?

- Ans**
- 1. 576
 - 2. 1152
 - 3. 2304
 - 4. 1552

Question ID : 264330153826
Option 1 ID : 264330602768
Option 2 ID : 264330602769
Option 3 ID : 264330602767
Option 4 ID : 264330602770
Status : Answered
Chosen Option : 3

Q.4 The following table shows the number of students enrolled in a university for higher education in Liberal Arts and in Engineering from 2015 to 2018. Study the table carefully and answer the question that follows.

Year	No. of students	
	Liberal Arts	Engineering
2015	345	650
2016	549	521
2017	477	846
2018	781	695

The average number of students enrolled per year in Liberal Arts is how much more or less than that in Engineering from 2015 to 2018?

- Ans**
- 1. Less, 140
 - 2. Less, 127
 - 3. More, 140
 - 4. More, 127

Question ID : 264330156496
Option 1 ID : 264330613371
Option 2 ID : 264330613373
Option 3 ID : 264330613372
Option 4 ID : 264330613374
Status : Answered
Chosen Option : 1

Q.5 Find the greatest two digit number which on dividing 219, 365, 511 leaves the remainders 3, 5, 7, respectively.

- Ans**
- 1. 63
 - 2. 82
 - 3. 53
 - 4. 72

Question ID : 264330155983
Option 1 ID : 264330611332
Option 2 ID : 264330611331
Option 3 ID : 264330611333
Option 4 ID : 264330611334
Status : Answered
Chosen Option : 4

Q.6 From a container having pure milk, 35% is replaced by water and the process is repeated thrice. At the end of the third operation, the purity of the milk is:

- Ans**
- 1. $21\frac{23}{80}\%$
 - 2. $37\frac{21}{80}\%$
 - 3. $23\frac{37}{80}\%$
 - 4. $27\frac{37}{80}\%$

Question ID : 264330154077
Option 1 ID : 264330603771
Option 2 ID : 264330603773
Option 3 ID : 264330603774
Option 4 ID : 264330603772
Status : Answered
Chosen Option : 3

Q.7 The difference in interests earned on ₹1,50,000 at an 8% rate of interest per annum in a year when the interest is compounded semi-annually and annually, respectively, is ₹_____.

- Ans**
- 1. 360
 - 2. 120
 - 3. 240
 - 4. 420

Question ID : 264330153811
Option 1 ID : 264330602708
Option 2 ID : 264330602709
Option 3 ID : 264330602710
Option 4 ID : 264330602707
Status : Answered
Chosen Option : 3

Q.8 If ₹3,650 amounts to ₹4,526 in 3 years at simple interest, what is the rate of interest per annum?

- Ans**
- 1. 8%
 - 2. 10%
 - 3. 12%
 - 4. 6%

Question ID : 264330156483
Option 1 ID : 264330613321
Option 2 ID : 264330613322
Option 3 ID : 264330613320
Option 4 ID : 264330613319
Status : Answered
Chosen Option : 1

Q.9 The percentage profit earned by selling an article for ₹1,980 is equal to the percentage loss incurred by selling the same article for ₹1,620. At what price should the article be sold to make a 15% profit?

- Ans**
- 1. ₹1,863
 - 2. ₹2,277
 - 3. ₹2,070
 - 4. ₹1,800

Question ID : 264330161979
Option 1 ID : 264330635245
Option 2 ID : 264330635244
Option 3 ID : 264330635243
Option 4 ID : 264330635246
Status : Answered
Chosen Option : 3

Q.10 A man travels from point A to point B at a speed of 40 km/h and returns to point A at a speed of 60 km/h. If the total time taken for the journey is 5 hours, what is the distance between point A and point B?

- Ans**
- 1. 135 km
 - 2. 120 km
 - 3. 125 km
 - 4. 130 km

Question ID : 264330156273
Option 1 ID : 264330612494
Option 2 ID : 264330612491
Option 3 ID : 264330612492
Option 4 ID : 264330612493
Status : Answered
Chosen Option : 2

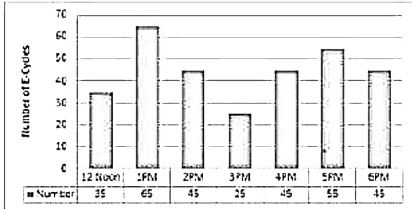
Q.11 Swati starts a business with ₹4,200, and after 5 months, Bani joins Swati as her partner. After a year, the profit is divided among Swati and Bani in the ratio 2 : 5. What is Bani's contribution?

- Ans**
- 1. ₹18,000
 - 2. ₹17,050
 - 3. ₹19,000
 - 4. ₹16,500

Question ID : 264330156186
Option 1 ID : 264330612144
Option 2 ID : 264330612143
Option 3 ID : 264330612146
Option 4 ID : 264330612145
Status : Answered
Chosen Option : 1

Q.12 The bar diagram represents the number of E-Cycles parking in a metro station from 12:00 P.M. to 6:00 P.M.

What will be the total collection from 2:00 P.M. to 6:00 P.M. when the parking charge is ₹3 per hour?



- Ans**
- 1. ₹625
 - 2. ₹655
 - 3. ₹645
 - 4. ₹695

Question ID : 264330154063

Option 1 ID : 264330603715

Option 2 ID : 264330603716

Option 3 ID : 264330603717

Option 4 ID : 264330603718

Status : Answered

Chosen Option : 3

Q.13 The income of X is 12% more than that of Y. By how much per cent is Y's income less than that of X?

- Ans**
- 1. $10\frac{4}{7}\%$
 - 2. $10\frac{3}{7}\%$
 - 3. $10\frac{5}{7}\%$
 - 4. $10\frac{2}{7}\%$

Question ID : 264330156216

Option 1 ID : 264330612265

Option 2 ID : 264330612264

Option 3 ID : 264330612266

Option 4 ID : 264330612263

Status : Answered

Chosen Option : 3

Q.14 In what ratio must a grocer mix two varieties of pulses costing ₹18 per kg and ₹22 per kg, respectively, so as to get a mixture worth ₹19.50 per kg?

- Ans**
- 1. 5 : 3
 - 2. 5 : 1
 - 3. 1 : 5
 - 4. 5 : 2

Question ID : 264330156052

Option 1 ID : 264330611609

Option 2 ID : 264330611607

Option 3 ID : 264330611608

Option 4 ID : 264330611610

Status : Answered

Chosen Option : 1

Q.15 If $A : B = 3 : 4$ and $A : C = 9 : 8$, then $A : B : C$ is:

- Ans 1. $9 : 12 : 8$
 2. $3 : 4 : 6$
 3. $9 : 8 : 12$
 4. $9 : 8 : 8$

Question ID : 264330153874
Option 1 ID : 264330602962
Option 2 ID : 264330602959
Option 3 ID : 264330602960
Option 4 ID : 264330602961
Status : Answered
Chosen Option : 1

Q.16 How many kilograms of sugar at ₹3.80 per kg must be mixed with 60 kg of sugar at ₹4.60 per kg, so that by selling the mixture at ₹5.20 per kg there may be a gain of 30%?

- Ans 1. 170 kg
 2. 120 kg
 3. 160 kg
 4. 180 kg

Question ID : 264330156070
Option 1 ID : 264330611681
Option 2 ID : 264330611679
Option 3 ID : 264330611682
Option 4 ID : 264330611680
Status : Answered
Chosen Option : 4

Q.17 Simplify:

$$24 \div 6 \times \left(\frac{3}{4} \text{ of } \frac{1}{3} + \frac{5}{3} \text{ of } \frac{3}{4} \right) = ?$$

- Ans 1. 9
 2. 6
 3. 3
 4. 8

Question ID : 264330156424
Option 1 ID : 264330613087
Option 2 ID : 264330613088
Option 3 ID : 264330613090
Option 4 ID : 264330613089
Status : Answered
Chosen Option : 2

Q.18 A and B can do a piece of work in 9 and 18 days, respectively. They started working together. After some days A left the work and B finished the remaining work in 15 days. After how many days did A leave?

- Ans**
- 1. 1
 - 2. 2
 - 3. 4
 - 4. 3

Question ID : 264330156010
Option 1 ID : 264330611441
Option 2 ID : 264330611442
Option 3 ID : 264330611439
Option 4 ID : 264330611440
Status : Answered
Chosen Option : 1

Q.19 The cost price of an article is ₹1,120. After allowing a discount of ₹205 a gain of 15% was made. Then the marked price of the article is:

- Ans**
- 1. ₹1,760
 - 2. ₹1,493
 - 3. ₹1,350
 - 4. ₹1,580

Question ID : 264330156447
Option 1 ID : 264330613182
Option 2 ID : 264330613179
Option 3 ID : 264330613181
Option 4 ID : 264330613180
Status : Answered
Chosen Option : 2

Q.20 12 days are taken by one man and one woman together to complete the work. A man alone can complete the work in 15 days. In how many days can one woman alone complete the work?

- Ans**
- 1. 45 days
 - 2. 30 days
 - 3. 60 days
 - 4. 12 days

Question ID : 264330156063
Option 1 ID : 264330611653
Option 2 ID : 264330611652
Option 3 ID : 264330611654
Option 4 ID : 264330611651
Status : Answered
Chosen Option : 3

Q.1 What should come in place of '?' in the given series?

10 19 ? 199 775 3079 12295

- Ans
- 1. 63
 - 2. 55
 - 3. 50
 - 4. 61

Question ID : 264330151445

Option 1 ID : 264330593410

Option 2 ID : 264330593408

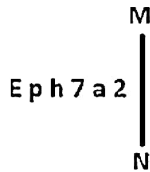
Option 3 ID : 264330593407

Option 4 ID : 264330593409

Status : Answered

Chosen Option : 2

Q.2 Select the correct mirror image of the given figure when the mirror is placed at MN as shown below.



- Ans
- 1. a 2 7 h p E
 - 2. 2 a 7 h p E
 - 3. 2 a 7 h p E
 - 4. 2 a 7 h p E

Question ID : 264330151509

Option 1 ID : 264330593663

Option 2 ID : 264330593666

Option 3 ID : 264330593665

Option 4 ID : 264330593664

Status : Answered

Chosen Option : 3

Q.3 Seven people, S, T, U, V, W, X and Y are sitting in a straight line, facing north. Only two people sit to the right of W. Only three people sit between S and W. U is the immediate neighbour of T and X. X is not the immediate neighbour of W. V sits third to the right of T.

Who is sitting between W and V?

- Ans
- 1. T
 - 2. Y
 - 3. U
 - 4. X

Question ID : 264330155546

Option 1 ID : 264330609588

Option 2 ID : 264330609587

Option 3 ID : 264330609589

Option 4 ID : 264330609590

Status : Answered

Chosen Option : 2

Q.4 Select the combination of letters that when sequentially placed in the blanks of the given series, will complete the series.

J _ JJ _ _ JM _ _ MJ

- Ans**
- 1. JJMMJ
 - 2. MMJJJ
 - 3. MJJMM
 - 4. JMMJM

Question ID : 264330151649
Option 1 ID : 264330594226
Option 2 ID : 264330594225
Option 3 ID : 264330594223
Option 4 ID : 264330594224
Status : Answered
Chosen Option : 2

Q.5 HM 12 is related to FK 17 in a certain way. In the same way, EK 18 is related to CI 23. To which of the following is GU 14 related to following the same logic?

- Ans**
- 1. ES 19
 - 2. IW 20
 - 3. ER 18
 - 4. FS 19

Question ID : 264330151683
Option 1 ID : 264330594359
Option 2 ID : 264330594360
Option 3 ID : 264330594361
Option 4 ID : 264330594362
Status : Answered
Chosen Option : 1

Q.6 Select the set in which the numbers are related in the same way as are the numbers of the following sets.

(NOTE : Operations should be performed on the whole numbers, without breaking down the numbers into its constituent digits. E.g. 13 – Operations on 13 such as adding / subtracting / multiplying etc. to 13 can be performed.

Breaking down 13 into 1 and 3 and then performing mathematical operations on 1 and 3 is not allowed)

(5, 35, 7)

(9, 27, 3)

- Ans**
- 1. 16, 50, 7
 - 2. 6, 42, 7
 - 3. 4, 10, 5
 - 4. 6, 17, 9

Question ID : 264330151608
Option 1 ID : 264330594061
Option 2 ID : 264330594060
Option 3 ID : 264330594059
Option 4 ID : 264330594062
Status : Answered
Chosen Option : 2

Q.7 In the following number-pairs, the second number is obtained by applying certain mathematical operations to the first number. Select the set in which the numbers are related in the same way as are the numbers of the following sets.

(NOTE: Operations should be performed on the whole numbers, without breaking down the numbers into its constituent digits. E.g. 13 – Operations on 13 such as adding /deleting /multiplying etc. to 13 can be performed. Breaking down 13 into 1 and 3 and then performing mathematical operations on 1 and 3 is not allowed)

16 : 95

6 : 35

- Ans**
- 1. 8 : 48
 - 2. 13 : 77
 - 3. 2 : 13
 - 4. 17 : 23

Question ID : 264330154653
Option 1 ID : 264330606077
Option 2 ID : 264330606078
Option 3 ID : 264330606076
Option 4 ID : 264330606075
Status : Answered
Chosen Option : 2

Q.8 Read the given statements and conclusions carefully. You have to take the given statements to be true even if they seem to be at variance from commonly known facts. You have to decide which conclusion/s logically follow/s from the given statements.

Statements: Some photos are vases. All vases are tall. Some tall are buildings.

Conclusion I: Some photos are buildings.

Conclusion II: All tall are vases.

- Ans**
- 1. Both conclusions (I) and (II) are follow.
 - 2. Only conclusion (I) is follow.
 - 3. Only conclusion (II) is follow.
 - 4. Neither conclusion (I) nor (II) is follow.

Question ID : 264330155915
Option 1 ID : 264330611066
Option 2 ID : 264330611063
Option 3 ID : 264330611064
Option 4 ID : 264330611065
Status : Answered
Chosen Option : 4

Q.9 What should come in place of ? in the given series based on the English alphabetical order?

JPX, GNU, DLR, AJO, ?

- Ans**
- 1. XHL
 - 2. ZGL
 - 3. YIL
 - 4. YGM

Question ID : 264330155787
Option 1 ID : 264330610551
Option 2 ID : 264330610554
Option 3 ID : 264330610553
Option 4 ID : 264330610552
Status : Answered
Chosen Option : 1

Q.10 In a certain code language, 'LED' is coded as '15-22-23' and 'BMW' is coded as '25-14- 4'. What is the code for 'QCF' in the given code language?

- Ans**
- 1. 9-4-21
 - 2. 10-6-21
 - 3. 11-5-20
 - 4. 9-5-20

Question ID : 264330155818
Option 1 ID : 264330610675
Option 2 ID : 264330610678
Option 3 ID : 264330610676
Option 4 ID : 264330610677
Status : Answered
Chosen Option : 2

Q.11 What should come in place of ? in the given series?

11 14 20 29 41 ?

- Ans**
- 1. 54
 - 2. 61
 - 3. 56
 - 4. 64

Question ID : 264330151717
Option 1 ID : 264330594497
Option 2 ID : 264330594496
Option 3 ID : 264330594495
Option 4 ID : 264330594498
Status : Answered
Chosen Option : 3

Q.12

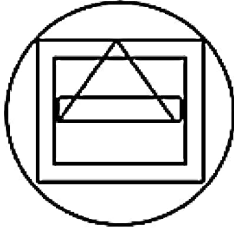
Select the option figure in which the given figure (X) is embedded as its part (rotation is NOT allowed).



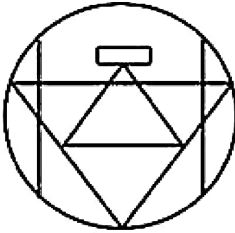
(X)

Ans

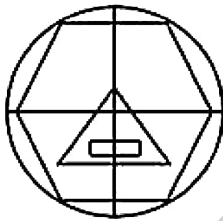
X 1.



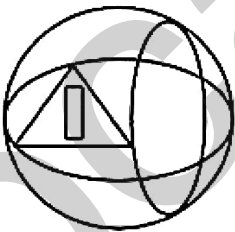
X 2.



✓ 3.



X 4.



Question ID : 264330151726

Option 1 ID : 264330594531

Option 2 ID : 264330594533

Option 3 ID : 264330594532

Option 4 ID : 264330594534

Status : Answered

Chosen Option : 3

Q.13 In a certain code language, 'DEAN' is coded as '2458' and 'LEND' is coded as '8352'. What is the code for 'L' in the given code language?

- Ans**
- 1. 5
 - 2. 3
 - 3. 8
 - 4. 2

Question ID : 264330151689
Option 1 ID : 264330594386
Option 2 ID : 264330594384
Option 3 ID : 264330594383
Option 4 ID : 264330594385
Status : Answered
Chosen Option : 2

Q.14 If 6 July 2011 is a Wednesday, then what will be the day of the week on 16 February 2010?

- Ans**
- 1. Monday
 - 2. Thursday
 - 3. Tuesday
 - 4. Saturday

Question ID : 264330154353
Option 1 ID : 264330604876
Option 2 ID : 264330604877
Option 3 ID : 264330604875
Option 4 ID : 264330604878
Status : Answered
Chosen Option : 4

Q.15 What should come in place of the question mark (?) in the given series based on the English alphabetical order?

DJS, HNT, LRU, PVV, ?

- Ans**
- 1. SRV
 - 2. UTV
 - 3. TZW
 - 4. USV

Question ID : 264330156298
Option 1 ID : 264330612591
Option 2 ID : 264330612593
Option 3 ID : 264330612592
Option 4 ID : 264330612594
Status : Answered
Chosen Option : 3

Q.16 What should come in place of '?' in the given series?

7 41 177 721 2897 ?

- Ans
- 1. 12589
 - 2. 11601
 - 3. 11283
 - 4. 10631

Question ID : 264330151462
Option 1 ID : 264330593478
Option 2 ID : 264330593477
Option 3 ID : 264330593476
Option 4 ID : 264330593475
Status : Answered
Chosen Option : 2

Q.17 What will come in the place of '?' in the following equation, if '+' and '-' are interchanged and '*' and '/' are interchanged?

$$121 \times 11 \div 7 - 15 - 23 = ?$$

- Ans
- 1. 69
 - 2. 49
 - 3. 59
 - 4. 79

Question ID : 264330155675
Option 1 ID : 264330610103
Option 2 ID : 264330610106
Option 3 ID : 264330610104
Option 4 ID : 264330610105
Status : Answered
Chosen Option : 1

Q.18 Read the given statements and conclusions carefully. You have to take the given statements to be true even if they seem to be at variance from commonly known facts. You have to decide which conclusion/s logically follow/s from the given statements.

Statements: All bed are covers. Some covers are thick. Some thick is juice.

Conclusion I: All covers are beds.

Conclusion II: Some thick are covers.

- Ans
- 1. Neither conclusion (I) nor (II) is follow.
 - 2. Only conclusion (II) is follow.
 - 3. Both conclusions (I) and (II) are follow.
 - 4. Only conclusion (I) is follow.

Question ID : 264330155900
Option 1 ID : 264330611005
Option 2 ID : 264330611004
Option 3 ID : 264330611006
Option 4 ID : 264330611003
Status : Answered
Chosen Option : 2

Q.19 Which figure should replace the question mark (?) if the following figure series were to be continued?

Z	O	K	B	U	Z	△	K	
B	U	L	K	O	L	△	Z	K
↑		△	U	↑	O	9	B	O
								?

Ans

X 1.

B		O	
△	9	L	K
Z			U

✓ 2.

B		U	
△	K	L	9
Z			A

X 3.

B		A	
△	O	L	9
Z			U

X 4.

B		△	
U	Z	L	9
O			K

Question ID : 264330154751

Option 1 ID : 264330606467

Option 2 ID : 264330606469

Option 3 ID : 264330606470

Option 4 ID : 264330606468

Status : Answered

Chosen Option : 2

Q.20 What will come in place of '?' in the following equation. if '+' and 'x' are interchanged and '-' and '+' are interchanged?

$$2 \times 4 - 1 + 6 + 8 = ?$$

Ans X 1. -13

✓ 2. -42

X 3. -18

X 4. -24

Question ID : 264330154660

Option 1 ID : 264330606103

Option 2 ID : 264330606105

Option 3 ID : 264330606106

Option 4 ID : 264330606104

Status : Answered

Chosen Option : 2

Q.1 If 7 N force is applied on a brick and it moves through 5 m, then what will be the work done?

- Ans
- 1. 25 J
 - 2. 40 J
 - 3. 35 J
 - 4. 35 Erg

Question ID : 264330156582
Option 1 ID : 264330613715
Option 2 ID : 264330613718
Option 3 ID : 264330613716
Option 4 ID : 264330613717
Status : Answered
Chosen Option : 3

Q.2 _____ is celebrated in Jharkhand immediately after Diwali on the new moon day in the honour of cattle.

- Ans
- 1. Bhagta Parab
 - 2. Makar
 - 3. Rohini
 - 4. Sohrai

Question ID : 264330160837
Option 1 ID : 264330630681
Option 2 ID : 264330630680
Option 3 ID : 264330630682
Option 4 ID : 264330630679
Status : Answered
Chosen Option : 4

Q.3 Which of the following novels is NOT written by Mulk Raj Anand?

- Ans
- 1. The Sword and the Sickle
 - 2. Coolie
 - 3. Private Life of an Indian Prince
 - 4. The Guide

Question ID : 264330155499
Option 1 ID : 264330609400
Option 2 ID : 264330609399
Option 3 ID : 264330609402
Option 4 ID : 264330609401
Status : Answered
Chosen Option : 2

Q.4 Which of the dance was immediately preceded by a practice session called sevakali and undertaken in the precincts of a temple?

- Ans** 1. Kathakali
 2. Kathak
 3. Odissi
 4. Kuchipudi

Question ID : 264330159054
Option 1 ID : 264330623577
Option 2 ID : 264330623576
Option 3 ID : 264330623575
Option 4 ID : 264330623578
Status : Not Answered
Chosen Option : --

Q.5 Which of the following is a duty of the Attorney General of India?

- Ans** 1. To give advice to the Government of India on legal matters
 2. To act as a judge in the Supreme Court
 3. To advise the State Government
 4. To represent India in international bodies

Question ID : 264330161286
Option 1 ID : 264330632472
Option 2 ID : 264330632473
Option 3 ID : 264330632471
Option 4 ID : 264330632474
Status : Answered
Chosen Option : 1

Q.6 The cultural heritage of Siddhis from _____ dates back to almost 300 years and their Siddhi Dhamal dance is an exquisite art form.

- Ans** 1. Uttar Pradesh
 2. Gujarat
 3. Madhya Pradesh
 4. Rajasthan

Question ID : 264330160795
Option 1 ID : 264330630514
Option 2 ID : 264330630511
Option 3 ID : 264330630513
Option 4 ID : 264330630512
Status : Answered
Chosen Option : 2

Q.7 Which of the following locations experiences the lowest amount of rainfall during the monsoon season?

- Ans** 1. Kerala
 2. Assam
 3. Leh
 4. Meghalaya

Question ID : 264330157827
Option 1 ID : 264330618667
Option 2 ID : 264330618668
Option 3 ID : 264330618669
Option 4 ID : 264330618670
Status : Answered
Chosen Option : 3

Q.8 In which of the following cities was the 2023 IPL final match held?

- Ans
- 1. Kolkata
 - 2. Chennai
 - 3. Mumbai
 - 4. Ahmedabad

Question ID : 264330161148
Option 1 ID : 264330631925
Option 2 ID : 264330631924
Option 3 ID : 264330631926
Option 4 ID : 264330631923
Status : Answered
Chosen Option : 4

Q.9 Who among the following was the director of Kathak Kendra and also opened his own dance school named 'Kalashrami'?

- Ans
- 1. Pandit Lachhu Maharaj
 - 2. Pandit Shambhu Maharaj
 - 3. Pandit Birju Maharaj
 - 4. Pandit Acchan Maharaj

Question ID : 264330155476
Option 1 ID : 264330609309
Option 2 ID : 264330609308
Option 3 ID : 264330609307
Option 4 ID : 264330609310
Status : Answered
Chosen Option : 3

Q.10 What is a budget deficit?

- Ans
- 1. The excess of government revenue over expenditure
 - 2. The amount of money allocated for defence spending
 - 3. The amount of money allocated for social welfare programmes
 - 4. The excess of government expenditure over revenue

Question ID : 264330157271
Option 1 ID : 264330616447
Option 2 ID : 264330616449
Option 3 ID : 264330616450
Option 4 ID : 264330616448
Status : Answered
Chosen Option : 4

Q.11 What is a revenue expenditure?

- Ans
- 1. Money spent on day-to-day government operations
 - 2. Money spent on debt repayment
 - 3. Money spent on purchasing assets
 - 4. Money spent on construction of roads

Question ID : 264330157273
Option 1 ID : 264330616458
Option 2 ID : 264330616457
Option 3 ID : 264330616455
Option 4 ID : 264330616456
Status : Answered
Chosen Option : 4

Q.12 Which Indian musician won the Grammy award for 'A Meeting by The River' with Ry Cooder in 1994?

- Ans
- 1. Ravi Shankar
 - 2. Vishwa Mohan Bhatt
 - 3. Hariprasad Chaurasia
 - 4. Zakir Hussain

Question ID : 264330155471
Option 1 ID : 264330609289
Option 2 ID : 264330609288
Option 3 ID : 264330609290
Option 4 ID : 264330609287
Status : Answered
Chosen Option : 4

Q.13 The holy mountain 'Kailash' is located in which neighbouring country of India?

- Ans
- 1. Pakistan
 - 2. Afghanistan
 - 3. Bangladesh
 - 4. China

Question ID : 264330161562
Option 1 ID : 264330633576
Option 2 ID : 264330633577
Option 3 ID : 264330633578
Option 4 ID : 264330633575
Status : Answered
Chosen Option : 4

Q.14 In which of the following states of India the 'Loo' wind does NOT blow during the summer season?

- Ans
- 1. Punjab
 - 2. Rajasthan
 - 3. Goa
 - 4. Haryana

Question ID : 264330161520
Option 1 ID : 264330633408
Option 2 ID : 264330633407
Option 3 ID : 264330633410
Option 4 ID : 264330633409
Status : Answered
Chosen Option : 3

Q.15 The Wild Life (Protection) Amendment Act, 2022 seeks to implement the Convention on International Trade in Endangered Species of Wild Fauna and Flora (CITES). Which of the following statements is correct about CITES?

1. CITES is an agreement between governments to ensure that international trade in the specimens of wild animals and plants does not threaten the survival of the species.
2. Under CITES, plant and animal specimens are classified into five categories based on the threat to their extinction.
3. The Convention requires countries to regulate the trade of all listed specimens through permits.
4. It also seeks to regulate the possession of live animal specimens.

- Ans 1. 1, 2 and 4
2. 1, 3 and 4
3. 2, 3 and 4
4. 1, 2 and 3

Question ID : 264330161413
Option 1 ID : 264330632982
Option 2 ID : 264330632980
Option 3 ID : 264330632981
Option 4 ID : 264330632979
Status : Answered
Chosen Option : 2

Q.16 'My Story' is the autobiography of which female writer?

- Ans 1. Amrita Pritam
2. Pratibha Ray
3. Kamala Das
4. Ashapura Devi

Question ID : 264330160964
Option 1 ID : 264330631188
Option 2 ID : 264330631189
Option 3 ID : 264330631187
Option 4 ID : 264330631190
Status : Answered
Chosen Option : 1

Q.17 Which age group of the population are covered under the Deen Dayal Upadhyaya Grameen Kaushalya Yojana (DDU-GKY) scheme of the Government of India?

- Ans 1. 25 to 60 years
2. 30 to 60 years
3. 15 to 35 years
4. 14 to 40 years

Question ID : 264330161576
Option 1 ID : 264330633632
Option 2 ID : 264330633631
Option 3 ID : 264330633633
Option 4 ID : 264330633634
Status : Answered
Chosen Option : 3

Q.18 Who was the founder of Naujawan Bharat Sabha?

Ans 1. Chandra Shekhar Azad

2. Ajeet Singh

3. Lala Lajpat Rai

4. Bhagat Singh

Question ID : 264330162332

Option 1 ID : 264330636657

Option 2 ID : 264330636655

Option 3 ID : 264330636656

Option 4 ID : 264330636658

Status : Answered

Chosen Option : 1

Q.19 Which gland gets enlarged in the goitre due to which there is a swelling in the front part of the throat?

Ans 1. Adrenal gland

2. Thyroid gland

3. Pineal gland

4. Pituitary gland

Question ID : 264330161073

Option 1 ID : 264330631623

Option 2 ID : 264330631626

Option 3 ID : 264330631624

Option 4 ID : 264330631625

Status : Answered

Chosen Option : 2

Q.20 In which state is the Bhitari temple situated?

Ans 1. Uttar Pradesh

2. Odisha

3. Jharkhand

4. Bihar

Question ID : 264330160780

Option 1 ID : 264330630453

Option 2 ID : 264330630451

Option 3 ID : 264330630452

Option 4 ID : 264330630454

Status : Answered

Chosen Option : 2

Q.21 Shubman Gill was in the news for creating a record in his sport. What sport does he play?

Ans 1. Chess

2. Cricket

3. Hockey

4. Badminton

Question ID : 264330158354

Option 1 ID : 264330620778

Option 2 ID : 264330620777

Option 3 ID : 264330620776

Option 4 ID : 264330620775

Status : Answered

Chosen Option : 2

Q.22 Which of the following does NOT come under Fundamental Duties?

Ans 1. To develop the scientific temper

2. To pay taxes

3. To promote harmony

4. To respect National Anthem

Question ID : 264330159899

Option 1 ID : 264330626946

Option 2 ID : 264330626943

Option 3 ID : 264330626945

Option 4 ID : 264330626944

Status : Marked For Review

Chosen Option : 1

Q.23 Who among the following was a world famous 'Sitar' player?

Ans 1. Pandit Ravi Shankar

2. Ustad Shafaat Ahmed Khan

3. Rajaratanam Pillai

4. Ali Ahmad Hussain

Question ID : 264330155509

Option 1 ID : 264330609442

Option 2 ID : 264330609439

Option 3 ID : 264330609441

Option 4 ID : 264330609440

Status : Answered

Chosen Option : 1

Q.24 Which of the following institutions bagged the maximum medals at the third edition of Khelo India University Games?

Ans 1. Panjab University

2. University of Kerala

3. Guru Nanak Dev University

4. Jain University

Question ID : 264330161134

Option 1 ID : 264330631870

Option 2 ID : 264330631869

Option 3 ID : 264330631868

Option 4 ID : 264330631867

Status : Answered

Chosen Option : 1

Q.25 In which year did the All-India Muslim League move a resolution demanding 'Independent States' for Muslims in the north-western and eastern areas of the country?

- Ans 1. 1942
 2. 1940
 3. 1939
 4. 1941

Question ID : 264330161740
Option 1 ID : 264330634290
Option 2 ID : 264330634288
Option 3 ID : 264330634287
Option 4 ID : 264330634289
Status : Answered
Chosen Option : 3

Section : English Language and Comprehension

Q.1 Parts of the following sentence have been given as options. Select the option that contains an error.
A soothe voice must convey both confidence and intimacy, qualities which can be attributed to a few key components.

- Ans 1. few key components
 2. A soothe voice
 3. convey both confidence
 4. which can be

Question ID : 264330153615
Option 1 ID : 264330601946
Option 2 ID : 264330601943
Option 3 ID : 264330601944
Option 4 ID : 264330601945
Status : Answered
Chosen Option : 2

Q.2 Select the most appropriate ANTONYM of the given word.
Empathetic

- Ans 1. Lonely
 2. Merciless
 3. Charismatic
 4. Frustrated

Question ID : 264330151915
Option 1 ID : 264330595276
Option 2 ID : 264330595277
Option 3 ID : 264330595275
Option 4 ID : 264330595278
Status : Answered
Chosen Option : 2

Q.3 Select the most appropriate meaning of the underlined idiom.
The police inspector knows the ins and outs of the murder case.

- Ans**
- 1. laws
 - 2. all the witnesses
 - 3. lawyers and judges
 - 4. full details

Question ID : 264330152753
Option 1 ID : 264330598613
Option 2 ID : 264330598611
Option 3 ID : 264330598614
Option 4 ID : 264330598612
Status : Answered
Chosen Option : 4

Q.4 The following sentence has been split into four segments. Identify the segment that contains an error.

He told me / that he goes / to the market / to buy a laptop.

- Ans**
- 1. He told me
 - 2. to buy a laptop
 - 3. to the market
 - 4. that he goes

Question ID : 264330151288
Option 1 ID : 264330592787
Option 2 ID : 264330592790
Option 3 ID : 264330592789
Option 4 ID : 264330592788
Status : Answered
Chosen Option : 4

Q.5 Select the most appropriate option that can substitute the underlined word in the following sentence.

The energetic kitten is playful after having his breakfast.

- Ans**
- 1. its
 - 2. it's
 - 3. it
 - 4. it is

Question ID : 264330152575
Option 1 ID : 264330597903
Option 2 ID : 264330597905
Option 3 ID : 264330597904
Option 4 ID : 264330597906
Status : Answered
Chosen Option : 1

Q.6 The following sentence has been split into four segments. Identify the segment that contains a grammatical error.
It is commonly believed / that Democracy is / the best form / of the government.

- Ans**
- 1. of the government
 - 2. It is commonly believed
 - 3. that Democracy is
 - 4. the best form

Question ID : 264330153167
Option 1 ID : 264330600230
Option 2 ID : 264330600227
Option 3 ID : 264330600228
Option 4 ID : 264330600229
Status : Answered
Chosen Option : 1

Q.7 Four words of the following sentence have been underlined and given as options.
Select the option that contains a spelling error.
Ozone is a reactiev gas that is not only important in protecting us from harmful ultraviolet radiation but is also a greenhouse gas and, at high smog-level concentrations, harmful to human health and vegetation.

- Ans**
- 1. reactiev
 - 2. radiation
 - 3. concentrations
 - 4. vegetation

Question ID : 264330151931
Option 1 ID : 264330595339
Option 2 ID : 264330595340
Option 3 ID : 264330595341
Option 4 ID : 264330595342
Status : Answered
Chosen Option : 1

Q.8 Select the most appropriate option that can substitute the underlined segment in the given sentence.
He said that I have finished my work.

- Ans**
- 1. he had finished his work
 - 2. he has finished his work
 - 3. I had finished my work
 - 4. he was finished his work

Question ID : 264330152707
Option 1 ID : 264330598429
Option 2 ID : 264330598430
Option 3 ID : 264330598428
Option 4 ID : 264330598427
Status : Answered
Chosen Option : 1

Q.9 Parts of the following sentence have been underlined and given as options. Select the option that contains a misspelt word.
A piano teacher described an interesting encounter she had with a young lady who came to inquire about music lessons.

- Ans
- 1. interesting
 - 2. inquire
 - 3. piano
 - 4. encounter

Question ID : 264330151834
Option 1 ID : 264330594964
Option 2 ID : 264330594966
Option 3 ID : 264330594963
Option 4 ID : 264330594965
Status : Answered
Chosen Option : 4

Q.10 Select the most appropriate meaning of the underlined idiom.

The executives were running around in circles, without any success.

- Ans
- 1. Achieving maximum mileage
 - 2. Suffering huge profits and losses
 - 3. Successfully accomplishing the target
 - 4. Putting efforts into something that does not give a worthwhile result

Question ID : 264330153143
Option 1 ID : 264330600133
Option 2 ID : 264330600134
Option 3 ID : 264330600132
Option 4 ID : 264330600131
Status : Answered
Chosen Option : 4

Q.11 Select the most appropriate option that can substitute the underlined segment in the given sentence. If there is no need to substitute it, select 'No substitution required'.
Many great people born in that small village.

- Ans
- 1. was born
 - 2. No substitution required
 - 3. is born
 - 4. were born

Question ID : 264330152729
Option 1 ID : 264330598516
Option 2 ID : 264330598518
Option 3 ID : 264330598515
Option 4 ID : 264330598517
Status : Answered
Chosen Option : 4

Q.12 The given sentence contains an error. Select the option that correctly rectifies the error.

He was carefulest while stealing the crown jewels.

- Ans**
- 1. He was more careful while stealing the crown jewels.
 - 2. He was most carefuller while stealing the crown jewels.
 - 3. He was carefuller while stealing the crown jewels.
 - 4. He was most careful while stealing the crown jewels.

Question ID : 264330152610
Option 1 ID : 264330598044
Option 2 ID : 264330598046
Option 3 ID : 264330598043
Option 4 ID : 264330598045
Status : Answered
Chosen Option : 4

Q.13 Select the most appropriate synonym of the given word.
Hesitate

- Ans**
- 1. Blabber
 - 2. Recoil
 - 3. Conceal
 - 4. Falter

Question ID : 264330151878
Option 1 ID : 264330595133
Option 2 ID : 264330595131
Option 3 ID : 264330595132
Option 4 ID : 264330595134
Status : Answered
Chosen Option : 2

Q.14 The sentence given below has spelling errors. Select the sentence without spelling errors.

We can also contribute to presarvation of water bodies by not dumping our garbage in them.

- Ans**
- 1. We can also contribute to presarvation of water bodies by not dumpeing our garbage in them.
 - 2. We can also contribute to preservation of water bodies by not dumping our garbage in them.
 - 3. We can also contribut to presarvation of water bodies by not dumping our garbage in them.
 - 4. We can also contribute to presarvation of water bodies by not dumping our garbag in them.

Question ID : 264330151840
Option 1 ID : 264330594989
Option 2 ID : 264330594988
Option 3 ID : 264330594987
Option 4 ID : 264330594990
Status : Answered
Chosen Option : 2

Q.15 Select the most appropriate meaning of the given idiom.

Call it a day

- Ans 1. To have the greatest day ever
2. To stop working
3. To be very straightforward
4. To refer to something as something else

Question ID : 264330153014
Option 1 ID : 264330599627
Option 2 ID : 264330599628
Option 3 ID : 264330599630
Option 4 ID : 264330599629
Status : Answered
Chosen Option : 2

Q.16 Select the most appropriate ANTONYM of the given word.
Stern

- Ans 1. Stable
2. Sincere
3. Profound
4. Lenient

Question ID : 264330152678
Option 1 ID : 264330598318
Option 2 ID : 264330598316
Option 3 ID : 264330598315
Option 4 ID : 264330598317
Status : Answered
Chosen Option : 4

Q.17 Select the most appropriate option that can substitute the underlined segment in the given sentence.

His older brothers were quite willing that he should went to sea.

- Ans 1. had go to
2. have gone in
3. gone to
4. go to

Question ID : 264330153486
Option 1 ID : 264330601461
Option 2 ID : 264330601462
Option 3 ID : 264330601460
Option 4 ID : 264330601459
Status : Answered
Chosen Option : 4

Q.18 Select the most appropriate option that can substitute the underlined segment in the given sentence. If there is no need to substitute it, select 'No improvement required'. It is true that learning English is essential for professionals to survived the national and international competitions.

- Ans**
- 1. to be survive
 - 2. having to survive
 - 3. No improvement required
 - 4. for surviving

Question ID : 264330153536
Option 1 ID : 264330601647
Option 2 ID : 264330601649
Option 3 ID : 264330601650
Option 4 ID : 264330601648
Status : Answered
Chosen Option : 4

Q.19 Select the most appropriate option to fill in the blank.
The tigress that was killed by the villagers was not only a man-eater, _____ a mother.

- Ans**
- 1. but
 - 2. but also
 - 3. and
 - 4. but often

Question ID : 264330152635
Option 1 ID : 264330598145
Option 2 ID : 264330598143
Option 3 ID : 264330598144
Option 4 ID : 264330598146
Status : Answered
Chosen Option : 2

Q.20 Select the most appropriate meaning of the given idiom.
Spill the beans

- Ans**
- 1. Excellent health
 - 2. Behave or speak in a rash manner
 - 3. Things always get worse
 - 4. To reveal a secret information unintentionally

Question ID : 264330153281
Option 1 ID : 264330600680
Option 2 ID : 264330600681
Option 3 ID : 264330600682
Option 4 ID : 264330600679
Status : Answered
Chosen Option : 4

Comprehension:

In the following passage, some words have been deleted. Read the passage carefully and select the most appropriate option to fill in each blank.

Photosynthesis is the _____(1) used by plants, algae and some bacteria to turn sunlight into energy. The process chemically _____(2) carbon dioxide and water into food and oxygen. The chemical reaction often _____(3) on a pigment called chlorophyll, which gives plants their green colour. Photosynthesis is also the _____(4) our planet is blanketed in an oxygen-rich atmosphere. Plants absorb carbon dioxide from the _____(5) air and release water and oxygen via microscopic pores on their leaves called stomata.

SubQuestion No : 21

Q.21 Select the most appropriate option to fill in blank number 1.

- Ans** 1. process
 2. guess
 3. chaos
 4. area

Question ID : 264330153499

Option 1 ID : 264330601507

Option 2 ID : 264330601509

Option 3 ID : 264330601510

Option 4 ID : 264330601508

Status : Answered

Chosen Option : 1

Comprehension:

In the following passage, some words have been deleted. Read the passage carefully and select the most appropriate option to fill in each blank.

Photosynthesis is the _____(1) used by plants, algae and some bacteria to turn sunlight into energy. The process chemically _____(2) carbon dioxide and water into food and oxygen. The chemical reaction often _____(3) on a pigment called chlorophyll, which gives plants their green colour. Photosynthesis is also the _____(4) our planet is blanketed in an oxygen-rich atmosphere. Plants absorb carbon dioxide from the _____(5) air and release water and oxygen via microscopic pores on their leaves called stomata.

SubQuestion No : 22

Q.22 Select the most appropriate option to fill in blank number 2.

- Ans** 1. converts
 2. exceeds
 3. crates
 4. bows

Question ID : 264330153500

Option 1 ID : 264330601514

Option 2 ID : 264330601512

Option 3 ID : 264330601513

Option 4 ID : 264330601511

Status : Answered

Chosen Option : 1

Comprehension:

In the following passage, some words have been deleted. Read the passage carefully and select the most appropriate option to fill in each blank.

Photosynthesis is the _____(1) used by plants, algae and some bacteria to turn sunlight into energy. The process chemically _____(2) carbon dioxide and water into food and oxygen. The chemical reaction often _____(3) on a pigment called chlorophyll, which gives plants their green colour. Photosynthesis is also the _____(4) our planet is blanketed in an oxygen-rich atmosphere. Plants absorb carbon dioxide from the _____(5) air and release water and oxygen via microscopic pores on their leaves called stomata.

SubQuestion No : 23

Q.23 Select the most appropriate option to fill in blank number 3.

- Ans**
- 1. relies
 - 2. creates
 - 3. hopes
 - 4. wants

Question ID : 264330153501

Option 1 ID : 264330601517

Option 2 ID : 264330601518

Option 3 ID : 264330601515

Option 4 ID : 264330601516

Status : Answered

Chosen Option : 1

Comprehension:

In the following passage, some words have been deleted. Read the passage carefully and select the most appropriate option to fill in each blank.

Photosynthesis is the _____(1) used by plants, algae and some bacteria to turn sunlight into energy. The process chemically _____(2) carbon dioxide and water into food and oxygen. The chemical reaction often _____(3) on a pigment called chlorophyll, which gives plants their green colour. Photosynthesis is also the _____(4) our planet is blanketed in an oxygen-rich atmosphere. Plants absorb carbon dioxide from the _____(5) air and release water and oxygen via microscopic pores on their leaves called stomata.

SubQuestion No : 24

Q.24 Select the most appropriate option to fill in blank number 4.

- Ans**
- 1. goal
 - 2. sense
 - 3. reason
 - 4. occasion

Question ID : 264330153502

Option 1 ID : 264330601522

Option 2 ID : 264330601519

Option 3 ID : 264330601520

Option 4 ID : 264330601521

Status : Answered

Chosen Option : 3

Comprehension:

In the following passage, some words have been deleted. Read the passage carefully and select the most appropriate option to fill in each blank.

Photosynthesis is the _____(1) used by plants, algae and some bacteria to turn sunlight into energy. The process chemically _____(2) carbon dioxide and water into food and oxygen. The chemical reaction often _____(3) on a pigment called chlorophyll, which gives plants their green colour. Photosynthesis is also the _____(4) our planet is blanketed in an oxygen-rich atmosphere. Plants absorb carbon dioxide from the _____(5) air and release water and oxygen via microscopic pores on their leaves called stomata.

SubQuestion No : 25

Q.25 Select the most appropriate option to fill in blank number 5.

- Ans**
- 1. afar
 - 2. distant
 - 3. surrounding
 - 4. close

Question ID : 264330153503

Option 1 ID : 264330601525

Option 2 ID : 264330601523

Option 3 ID : 264330601524

Option 4 ID : 264330601526

Status : Answered

Chosen Option : 3