

SSC MTS 2023 Tier 1 Sept 4 Shift 1 Question Paper with Answers

Roll Number	
Candidate Name	
Exam Date	04/09/2023
Exam Time	9:00 AM - 11:00 AM
Subject	MTS Non Tech Havaladar CBIC and CBN Examination 2023

Section : Numerical and Mathematical Ability

Q.1 Find the area of an equilateral triangle, each of whose sides measures 12 cm.

- Ans**
- 1. $36\sqrt{3} \text{ cm}^2$
 - 2. $3\sqrt{3} \text{ cm}^2$
 - 3. $\frac{36}{\sqrt{3}} \text{ cm}^2$
 - 4. $\frac{72}{\sqrt{3}} \text{ cm}^2$

Question ID : 264330153893

Option 1 ID : 264330603037

Option 2 ID : 264330603035

Option 3 ID : 264330603038

Option 4 ID : 264330603036

Status : Answered

Chosen Option : 1

Q.2 The radius and the height of a right circular cone are in the ratio 3 : 4. If its volume is 301.44 m^3 , find the slant height (use $\pi = 3.14$).

- Ans**
- 1. 5 cm
 - 2. 20 cm
 - 3. 10 cm
 - 4. 15 cm

Question ID : 264330156370

Option 1 ID : 264330612882

Option 2 ID : 264330612879

Option 3 ID : 264330612881

Option 4 ID : 264330612880

Status : Answered

Chosen Option : 3

Q.3 At what rate of interest per annum, compounded annually, will an amount of ₹8,000 yield a compound interest of ₹904.2 in 2 years?

- Ans
- 1. 6%
 - 2. 8%
 - 3. 10%
 - 4. 5.5%

Question ID : 264330156346
Option 1 ID : 264330612783
Option 2 ID : 264330612784
Option 3 ID : 264330612786
Option 4 ID : 264330612785
Status : Answered
Chosen Option : 4

Q.4 The average of the first 10 prime number is:

- Ans
- 1. 12.9
 - 2. 9.7
 - 3. 11.9
 - 4. 13.4

Question ID : 264330154075
Option 1 ID : 264330603765
Option 2 ID : 264330603764
Option 3 ID : 264330603763
Option 4 ID : 264330603766
Status : Answered
Chosen Option : 1

Q.5 A manufacturer earns a profit of 10% on selling his products to a wholesale dealer. The wholesale dealer earns a profit of 15% by selling it to a retailer. The retailer, in turn, earns a profit of 25% from the customer. What is the actual cost of production of an article for which the customer pays ₹12,650?

- Ans
- 1. ₹8,000
 - 2. ₹8,500
 - 3. ₹9,000
 - 4. ₹7,000

Question ID : 264330154123
Option 1 ID : 264330603956
Option 2 ID : 264330603957
Option 3 ID : 264330603958
Option 4 ID : 264330603955
Status : Answered
Chosen Option : 1

Q.6 Number of eggs produced by five farms:

Year	Farm				
	L	M	N	O	P
2019	825	925	670	740	480
2020	928	768	781	530	864
2021	765	635	922	515	940
2022	832	526	623	618	745

What is the respective ratio of the dozens of eggs produced by farm M to farm P in the year 2020?

- Ans**
1. 8 : 9
2. 9 : 8
3. 7 : 8
4. 4 : 3

Question ID : 264330155761
 Option 1 ID : 264330610447
 Option 2 ID : 264330610450
 Option 3 ID : 264330610448
 Option 4 ID : 264330610449
 Status : Answered
 Chosen Option : 1

Q.7 The average of the first 69 natural numbers is:

- Ans**
1. 34
2. 35
3. 33
4. 36

Question ID : 264330156209
 Option 1 ID : 264330612236
 Option 2 ID : 264330612237
 Option 3 ID : 264330612235
 Option 4 ID : 264330612238
 Status : Answered
 Chosen Option : 2

Q.8 By selling a TV set for ₹16,800, a salesman gains a profit of 20%. If the production cost is increased by 20%, find the new selling price of the set so as to gain 20%.

- Ans**
1. ₹18,160
2. ₹18,480
3. ₹20,160
4. ₹20,480

Question ID : 264330155999
 Option 1 ID : 264330611395
 Option 2 ID : 264330611397
 Option 3 ID : 264330611398
 Option 4 ID : 264330611396
 Status : Answered
 Chosen Option : 3

Q.9 A mixture contains milk and water in the ratio 9 : 7. If it contains 4 litres more milk than water, then find the quantity of milk (in litres) in the mixture.

- Ans**
- 1. 18
 - 2. 15
 - 3. 21
 - 4. 14

Question ID : 264330156051
Option 1 ID : 264330611603
Option 2 ID : 264330611605
Option 3 ID : 264330611606
Option 4 ID : 264330611604
Status : Answered
Chosen Option : 1

Q.10 Juli and Rahul can simultaneously finish the work of painting a room in 12 days. If Juli alone can paint the room in 20 days, in how many days can Rahul alone complete the same work of painting the room?

- Ans**
- 1. 30
 - 2. 25
 - 3. 40
 - 4. 35

Question ID : 264330155719
Option 1 ID : 264330610280
Option 2 ID : 264330610279
Option 3 ID : 264330610282
Option 4 ID : 264330610281
Status : Answered
Chosen Option : 1

Q.11 The mean proportion of $(3+2\sqrt{2})^2$ and $(3-2\sqrt{2})^2$ is:

- Ans**
- 1. $3 + 2\sqrt{2}$
 - 2. 5
 - 3. $2\sqrt{2}$
 - 4. 1

Question ID : 264330154052
Option 1 ID : 264330603674
Option 2 ID : 264330603671
Option 3 ID : 264330603672
Option 4 ID : 264330603673
Status : Answered
Chosen Option : 4

Q.12 Three measuring tapes are 64 cm, 72 cm and 96 cm, respectively. What is the least length that can be measured by any of the tapes exactly (in cm)?

- Ans
- 1. 575
 - 2. 570
 - 3. 576
 - 4. 525

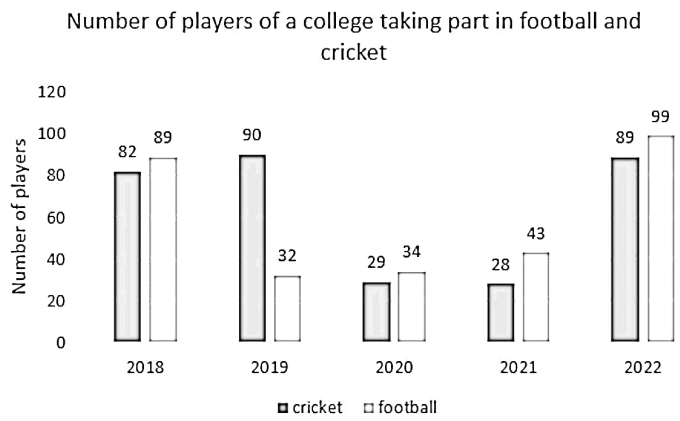
Question ID : 264330155984
Option 1 ID : 264330611337
Option 2 ID : 264330611335
Option 3 ID : 264330611336
Option 4 ID : 264330611338
Status : Answered
Chosen Option : 3

Q.13 A work can be completed by P and Q working separately in 12 and 18 days, respectively. But they work on alternate days beginning with P. How many days will it take to complete the work?

- Ans
- 1. $14\frac{1}{12}$
 - 2. 15
 - 3. $14\frac{1}{3}$
 - 4. $14\frac{1}{4}$

Question ID : 264330154059
Option 1 ID : 264330603702
Option 2 ID : 264330603700
Option 3 ID : 264330603701
Option 4 ID : 264330603699
Status : Answered
Chosen Option : 3

Q.14 The bar graph shows the number of players of a college taking part in two games for five years:



What is the total number of players playing cricket and football in 2019 and 2020?

- Ans
- 1. 190
 - 2. 195
 - 3. 185
 - 4. 180

Question ID : 264330154100

Option 1 ID : 264330603864

Option 2 ID : 264330603865

Option 3 ID : 264330603863

Option 4 ID : 264330603866

Status : Answered

Chosen Option : 3

Q.15 P and Q start from point A to point B, at the same time at speeds of 32 km/h and 40 km/h, respectively. If in covering the journey P takes 15 minutes longer than Q, the total distance AB of the journey is:

- Ans
- 1. 36 km
 - 2. 32 km
 - 3. 40 km
 - 4. 44 km

Question ID : 264330156366

Option 1 ID : 264330612865

Option 2 ID : 264330612866

Option 3 ID : 264330612864

Option 4 ID : 264330612863

Status : Answered

Chosen Option : 3

Q.16 Simplify

$$108 \div 36 \times 4 + 2.5 \times 4 \div 0.5 - 10$$

- Ans
- 1. 10
 - 2. 22
 - 3. 21
 - 4. 20

Question ID : 264330156049

Option 1 ID : 264330611595

Option 2 ID : 264330611598

Option 3 ID : 264330611597

Option 4 ID : 264330611596

Status : Answered

Chosen Option : 2

Q.17 A car dealer borrows ₹20,000 from a bank for a period of 2 years at a simple interest rate of 8% per annum. If he repays the loan in full at the end of the 2-year period, how much will he have to pay?

- Ans
- 1. ₹3,600
 - 2. ₹23,600
 - 3. ₹23,200
 - 4. ₹3,200

Question ID : 264330156269

Option 1 ID : 264330612478

Option 2 ID : 264330612476

Option 3 ID : 264330612475

Option 4 ID : 264330612477

Status : Answered

Chosen Option : 3

Q.18 A lady invests ₹27,600 in three shares in the ratio 3 : 4 : 5 which pay dividends of 20%, 15% and 5% on her investment for that year, respectively. What is the total dividend?

- Ans
- 1. ₹3,852
 - 2. ₹3,335
 - 3. ₹3,125
 - 4. ₹2,535

Question ID : 264330154087

Option 1 ID : 264330603813

Option 2 ID : 264330603814

Option 3 ID : 264330603812

Option 4 ID : 264330603811

Status : Answered

Chosen Option : 2

Q.19 Two trains of length 200 m and 325 m long are running on parallel rail tracks at speeds of 78 km/h and 60 km/h, respectively. In how much time (in seconds) the faster train cross the slower one if they are running in the same direction?

- Ans
- 1. 105
 - 2. 100
 - 3. 115
 - 4. 110

Question ID : 264330156233
Option 1 ID : 264330612332
Option 2 ID : 264330612331
Option 3 ID : 264330612334
Option 4 ID : 264330612333
Status : Answered
Chosen Option : 1

Q.20 A college student spends 75% of his pocket money. When the pocket money increased by 20%, the expenditure also increased by 15%. What is the increase in the savings?

- Ans
- 1. 25%
 - 2. 55%
 - 3. 35%
 - 4. 45%

Question ID : 264330154044
Option 1 ID : 264330603640
Option 2 ID : 264330603642
Option 3 ID : 264330603641
Option 4 ID : 264330603639
Status : Answered
Chosen Option : 3

Section : Reasoning Ability and Problem Solving

Q.1 What should come in place of '?' in the given series?

4 22 112 562 2812 ?

- Ans
- 1. 13423
 - 2. 13948
 - 3. 14062
 - 4. 13684

Question ID : 264330151464
Option 1 ID : 264330593483
Option 2 ID : 264330593485
Option 3 ID : 264330593486
Option 4 ID : 264330593484
Status : Answered
Chosen Option : 3

Q.2 What should come in place of '?' in the given series?

16 110 ? 5374 37616 263310 1843168

- Ans
- 1. 792
 - 2. 800
 - 3. 804
 - 4. 768

Question ID : 264330151481

Option 1 ID : 264330593552

Option 2 ID : 264330593553

Option 3 ID : 264330593554

Option 4 ID : 264330593551

Status : Answered

Chosen Option : 4

Q.3 Read the given statements and conclusions carefully. You have to take the given statements to be true even if they seem to be at variance from commonly known facts. You have to decide which conclusion/s logically follow/s from the given statements.

Statements: All ropes are forks. Some forks are spoons. Some spoons are chopsticks.

Conclusion I: Some ropes are spoons.

Conclusion II: All forks are chopsticks.

- Ans
- 1. Only conclusion (II) is follow.
 - 2. Only conclusion (I) is follow.
 - 3. Both conclusions (I) and (II) are follow.
 - 4. Neither conclusion (I) nor (II) is follow.

Question ID : 264330155927

Option 1 ID : 264330611112

Option 2 ID : 264330611111

Option 3 ID : 264330611114

Option 4 ID : 264330611113

Status : Answered

Chosen Option : 4

Q.4 In the following number-pairs, the second number is obtained by applying certain mathematical operations to the first number. Select the set in which the numbers are related in the same way as are the numbers of the following sets.
(NOTE: Operations should be performed on the whole numbers, without breaking down the numbers into its constituent digits. E.g. 13 – Operations on 13 such as adding /deleting /multiplying etc. to 13 can be performed. Breaking down 13 into 1 and 3 and then performing mathematical operations on 1 and 3 is not allowed)

8 : 50

4 : 30

- Ans
- 1. 20 : 40
 - 2. 6 : 20
 - 3. 7 : 45
 - 4. 5 : 8

Question ID : 264330154646

Option 1 ID : 264330606050

Option 2 ID : 264330606048

Option 3 ID : 264330606047

Option 4 ID : 264330606049

Status : Marked For Review

Chosen Option : 2

Q.5 What will come in the place of '?' in the following equation, if '+' and '-' are interchanged and 'x' and '÷' are interchanged?
 $729 \times 81 - 96 - 13 + 8 = ?$

- Ans**
- 1. 1
 - 2. 11
 - 3. 8
 - 4. 9

Question ID : 264330155680
 Option 1 ID : 264330610124
 Option 2 ID : 264330610123
 Option 3 ID : 264330610126
 Option 4 ID : 264330610125
 Status : Answered
 Chosen Option : 1

Q.6 Which figure should replace the question mark (?) if the following figure series were to be continued?

T	T Δ	Δ	?
P □	P P	T	P
Δ Δ	O □ T O	T	P

Ans

- 1.

O	P	T
		Δ
- 2.

□	P	Δ
		T
- 3.

T	O
P	Δ
- 4.

□	P	T
		Δ

Question ID : 264330154758
 Option 1 ID : 264330606497
 Option 2 ID : 264330606495
 Option 3 ID : 264330606496
 Option 4 ID : 264330606498
 Status : Answered
 Chosen Option : 4

Q.7 In a certain code language, 'COIN' is coded as '9735' and 'ONCE' is coded as '3459'. What is the code for 'E' in the given code language?

- Ans
- 1. 5
 - 2. 3
 - 3. 4
 - 4. 9

Question ID : 264330151693

Option 1 ID : 264330594402

Option 2 ID : 264330594400

Option 3 ID : 264330594399

Option 4 ID : 264330594401

Status : Answered

Chosen Option : 3

Q.8 Read the given statements and conclusions carefully. You have to take the given statements to be true even if they seem to be at variance from commonly known facts. You have to decide which conclusion/s logically follow/s from the given statements.

Statements: All computers are laptops. Some laptops are heavy. All heavy is wood.

Conclusion I: All laptops are computers.

Conclusion II: Some heavy are laptops.

- Ans
- 1. Neither conclusion (I) nor (II) is follow.
 - 2. Only conclusion (I) is follow.
 - 3. Both conclusions (I) and (II) are follow.
 - 4. Only conclusion (II) is follow.

Question ID : 264330155908

Option 1 ID : 264330611037

Option 2 ID : 264330611035

Option 3 ID : 264330611038

Option 4 ID : 264330611036

Status : Answered

Chosen Option : 4

Q.9 Six people, Karan, Dilip, Rahul, Prabhat, Alok and Sandeep are sitting in a straight line, facing north. Karan sits 2nd from the left end. Dilip sits 3rd to the right of Karan. Rahul sits 2nd to the left of Dilip. Prabhat sits 3rd to the right of Rahul. Sandeep sits 2nd to the left of Prabhat. Who sits 2nd to the right of Karan?

- Ans
- 1. Rahul
 - 2. Sandeep
 - 3. Prabhat
 - 4. Alok

Question ID : 264330161848

Option 1 ID : 264330634720

Option 2 ID : 264330634721

Option 3 ID : 264330634722

Option 4 ID : 264330634719

Status : Answered

Chosen Option : 2

Q.10 What should come in place of ? in the given series based on the English alphabetical order?

MAG, QXE, UUC, YRA, ?

- Ans
- 1. CNX
 - 2. COY
 - 3. DNY
 - 4. DMX

Question ID : 264330155806
Option 1 ID : 264330610630
Option 2 ID : 264330610627
Option 3 ID : 264330610629
Option 4 ID : 264330610628
Status : Answered
Chosen Option : 2

Q.11 In the following number-pairs, the second number is obtained by applying certain mathematical operations to the first number. Select the set in which the numbers are related in the same way as are the numbers of the following sets.

(NOTE: Operations should be performed on the whole numbers, without breaking down the numbers into its constituent digits. E.g. 13 – Operations on 13 such as adding / subtracting / multiplying etc. to 13 can be performed. Breaking down 13 into 1 and 3 and then performing mathematical operations on 1 and 3 is not allowed)

5, 128
9, 732

- Ans
- 1. 5, 50
 - 2. 3, 30
 - 3. 4, 46
 - 4. 2, 13

Question ID : 264330151620
Option 1 ID : 264330594110
Option 2 ID : 264330594108
Option 3 ID : 264330594109
Option 4 ID : 264330594107
Status : Answered
Chosen Option : 2

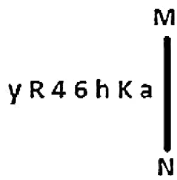
Q.12 What should come in place of '?' in the given series?

5 15 35 75 155 ?

- Ans
- 1. 315
 - 2. 305
 - 3. 325
 - 4. 335

Question ID : 264330151456
Option 1 ID : 264330593452
Option 2 ID : 264330593451
Option 3 ID : 264330593453
Option 4 ID : 264330593454
Status : Answered
Chosen Option : 1

Q.13 Select the correct mirror image of the given figure when the mirror is placed at MN as shown below.



- Ans
- X 1. $\bar{y} R 4 6 h K a$
 - X 2. $\bar{a} K h 6 4 R y$
 - ✓ 3. $\bar{a} K h 6 4 R y$
 - X 4. $\bar{y} R 4 6 h k a$

Question ID : 264330151528
Option 1 ID : 264330593739
Option 2 ID : 264330593741
Option 3 ID : 264330593740
Option 4 ID : 264330593742
Status : Answered
Chosen Option : 3

Q.14 What will come in the place of the question mark (?) in the following equation, if '+' and '-' are interchanged and 'x' and '÷' are interchanged?
 $39 \div 5 \div 8 - 99 \times 9 = ?$

- Ans
- X 1. 168
 - ✓ 2. 198
 - X 3. 158
 - X 4. 178

Question ID : 264330154614
Option 1 ID : 264330605920
Option 2 ID : 264330605922
Option 3 ID : 264330605919
Option 4 ID : 264330605921
Status : Answered
Chosen Option : 2

Q.15 What should come in place of the question mark (?) in the given series based on the English alphabetical order?
EMT, ILX, MKB, QJF, ?

- Ans
- X 1. UHL
 - X 2. VJL
 - ✓ 3. UIJ
 - X 4. VHK

Question ID : 264330156300
Option 1 ID : 264330612599
Option 2 ID : 264330612600
Option 3 ID : 264330612602
Option 4 ID : 264330612601
Status : Answered
Chosen Option : 3

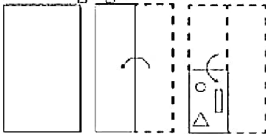
Q.16 What should come in place of ? in the given series based on the English alphabetical order?

NBE, JXA, FTW, BPS, ?

- Ans
- 1. XMP
 - 2. YMN
 - 3. XLO
 - 4. YNP

Question ID : 264330155771
Option 1 ID : 264330610490
Option 2 ID : 264330610488
Option 3 ID : 264330610489
Option 4 ID : 264330610487
Status : Answered
Chosen Option : 3

Q.17 The sequence of folding a piece of paper and the manner in which the folded paper is cut is shown in the following figures. How would this paper look when unfolded?



Ans

- 1.
- 2.
- 3.
- 4.

Question ID : 264330155607
Option 1 ID : 264330609831
Option 2 ID : 264330609834
Option 3 ID : 264330609832
Option 4 ID : 264330609833
Status : Answered
Chosen Option : 1

Q.18 In a certain code language, 'BLANCH' is coded as '36' and 'ARAB' is coded as '24'. What is the code for 'CORRECT' in the given code language?

- Ans
- 1. 41
 - 2. 39
 - 3. 42
 - 4. 40

Question ID : 264330155825
Option 1 ID : 264330610704
Option 2 ID : 264330610706
Option 3 ID : 264330610703
Option 4 ID : 264330610705
Status : Answered
Chosen Option : 3

Q.19 DKJE is related to IPOJ in a certain way based on the English alphabetical order. In the same way, GTSM is related to LYXR. To which of the following is RENF related to, following the same logic?

- Ans
- 1. WGSK
 - 2. XERJ
 - 3. WEQK
 - 4. VGQI

Question ID : 264330151656
Option 1 ID : 264330594253
Option 2 ID : 264330594254
Option 3 ID : 264330594251
Option 4 ID : 264330594252
Status : Answered
Chosen Option : 1

Q.20 The position of how many letters will remain unchanged if each of the letter in the word 'BACHELOR' is arranged in alphabetical order?

- Ans
- 1. One
 - 2. Five
 - 3. Four
 - 4. Two

Question ID : 264330154324
Option 1 ID : 264330604759
Option 2 ID : 264330604761
Option 3 ID : 264330604760
Option 4 ID : 264330604762
Status : Answered
Chosen Option : 3

Section : General Awareness

Q.1 The Padma Shri awardee Guru K Kalyanasundaram Pillai, the man who is keeping an ancient tradition alive, was awarded the Padma Shri 2023 for his contribution to the field of _____.

- Ans**
- 1. Kuchipudi
 - 2. Kathakali
 - 3. Bharatanatyam
 - 4. Mohiniyattam

Question ID : 264330160805
Option 1 ID : 264330630551
Option 2 ID : 264330630554
Option 3 ID : 264330630553
Option 4 ID : 264330630552
Status : Answered
Chosen Option : 3

Q.2 Who appoints the State Election Commissioner?

- Ans**
- 1. Governor
 - 2. Speaker
 - 3. Chief Minister
 - 4. Advocate General

Question ID : 264330159924
Option 1 ID : 264330627043
Option 2 ID : 264330627045
Option 3 ID : 264330627044
Option 4 ID : 264330627046
Status : Answered
Chosen Option : 1

Q.3 In which river has the National Waterways-2 (NW-2) been developed in India?

- Ans**
- 1. Brahmaputra
 - 2. Krishna
 - 3. Ganga
 - 4. Narmada

Question ID : 264330161512
Option 1 ID : 264330633377
Option 2 ID : 264330633376
Option 3 ID : 264330633378
Option 4 ID : 264330633375
Status : Answered
Chosen Option : 1

Q.4 In India, Micro Finance Institutions primarily target which segment of the population?

- Ans**
- 1. Non-resident Indians (NRIs)
 - 2. Large corporations
 - 3. Low-income individuals and small businesses
 - 4. High-income individuals

Question ID : 264330157287
Option 1 ID : 264330616514
Option 2 ID : 264330616512
Option 3 ID : 264330616513
Option 4 ID : 264330616511
Status : Answered
Chosen Option : 3

Q.5 What is the name of the scheme launched by Himachal Pradesh government for dairy farmers?

- Ans**
- 1. Dhugdh Dhan
 - 2. Pashu Poshan
 - 3. Dhoodh aur Dhan
 - 4. Sanjeevani

Question ID : 264330158327
Option 1 ID : 264330620669
Option 2 ID : 264330620667
Option 3 ID : 264330620670
Option 4 ID : 264330620668
Status : Answered
Chosen Option : 3

Q.6 Which of the following States will host the 37th National Games?

- Ans**
- 1. Odisha
 - 2. Andhra Pradesh
 - 3. Goa
 - 4. Karnataka

Question ID : 264330161150
Option 1 ID : 264330631934
Option 2 ID : 264330631932
Option 3 ID : 264330631933
Option 4 ID : 264330631931
Status : Answered
Chosen Option : 2

Q.7 Kalidas Samman is a prestigious arts award presented annually by the government of _____.

- Ans**
- 1. Madhya Pradesh
 - 2. Rajasthan
 - 3. Kerala
 - 4. Karnataka

Question ID : 264330161911
Option 1 ID : 264330634973
Option 2 ID : 264330634974
Option 3 ID : 264330634971
Option 4 ID : 264330634972
Status : Answered
Chosen Option : 1

Q.8 How many countries will participate in ICC 2023 ODI Cricket World Cup?

- Ans 1. 12
 2. 10
 3. 6
 4. 8

Question ID : 264330158226
Option 1 ID : 264330620266
Option 2 ID : 264330620265
Option 3 ID : 264330620263
Option 4 ID : 264330620264
Status : Answered
Chosen Option : 2

Q.9 Whose autobiography is titled 'Born Again on the Mountain: a story of losing everything and finding it back'?

- Ans 1. Bachendri Pal
 2. Dicky Dolma
 3. Santosh Yadav
 4. Arunima Sinha

Question ID : 264330155451
Option 1 ID : 264330609207
Option 2 ID : 264330609209
Option 3 ID : 264330609210
Option 4 ID : 264330609208
Status : Answered
Chosen Option : 4

Q.10 Which of the following is NOT a characteristic of money?

- Ans 1. Portability
 2. Perishability
 3. Divisibility
 4. Durability

Question ID : 264330157303
Option 1 ID : 264330616576
Option 2 ID : 264330616578
Option 3 ID : 264330616577
Option 4 ID : 264330616575
Status : Answered
Chosen Option : 2

Q.11 Among the given options, which one causes an echo?

- Ans 1. When sound is reflected
 2. When sound waves travel through a solid medium
 3. When sound waves travel through a liquid medium
 4. When sound waves travel through a vacuum

Question ID : 264330157786
Option 1 ID : 264330618506
Option 2 ID : 264330618505
Option 3 ID : 264330618504
Option 4 ID : 264330618503
Status : Answered
Chosen Option : 1

Q.12 _____ has two traditions: one is the sankeertana (which is the devotional aspect) and the other is the raasa.

- Ans
- 1. Odissi
 - 2. Sattriya
 - 3. Manipuri dance
 - 4. Chhau

Question ID : 264330160791
Option 1 ID : 264330630495
Option 2 ID : 264330630496
Option 3 ID : 264330630498
Option 4 ID : 264330630497
Status : Not Answered
Chosen Option : --

Q.13 Which of the following lakes is a saltwater lake ?

- Ans
- 1. Superior
 - 2. Chilika
 - 3. Malawi
 - 4. Titicaca

Question ID : 264330161325
Option 1 ID : 264330632628
Option 2 ID : 264330632627
Option 3 ID : 264330632629
Option 4 ID : 264330632630
Status : Answered
Chosen Option : 2

Q.14 'Wings of Fire' is an autobiography of whom?

- Ans
- 1. Ratan Tata
 - 2. Indira Gandhi
 - 3. Subhash Chandra Bose
 - 4. APJ Abdul Kalam

Question ID : 264330155491
Option 1 ID : 264330609370
Option 2 ID : 264330609369
Option 3 ID : 264330609368
Option 4 ID : 264330609367
Status : Answered
Chosen Option : 4

Q.15 The _____ of the Indian Constitution defines the Fundamental Duties of Indian Citizens.

- Ans
- 1. Article 51A
 - 2. Article 41B
 - 3. Article 49C
 - 4. Article 21A

Question ID : 264330162245
Option 1 ID : 264330636310
Option 2 ID : 264330636308
Option 3 ID : 264330636309
Option 4 ID : 264330636307
Status : Answered
Chosen Option : 1

Q.16 Dr. Bhupendra Kumar Hazarika won the Bharat Ratna award in the field of _____ in 2019.

- Ans
- 1. Literature
 - 2. Music
 - 3. Games
 - 4. Science

Question ID : 264330155506
Option 1 ID : 264330609428
Option 2 ID : 264330609429
Option 3 ID : 264330609430
Option 4 ID : 264330609427
Status : Answered
Chosen Option : 1

Q.17 What type of vegetation is represented by Sundarbans, the world's largest delta located in the Bay of Bengal?

- Ans
- 1. Tropical Thorn Forests
 - 2. Montane Forests
 - 3. Mangrove Forests
 - 4. Semi Evergreen Forests

Question ID : 264330160994
Option 1 ID : 264330631310
Option 2 ID : 264330631309
Option 3 ID : 264330631308
Option 4 ID : 264330631307
Status : Answered
Chosen Option : 3

Q.18 The Mumbai High region in Arabian Sea is known for mining _____.

- Ans
- 1. uranium
 - 2. coal
 - 3. copper
 - 4. mineral oil

Question ID : 264330161526
Option 1 ID : 264330633431
Option 2 ID : 264330633434
Option 3 ID : 264330633432
Option 4 ID : 264330633433
Status : Answered
Chosen Option : 2

Q.19 In which of the following years was the Child Marriage Restraint Act passed?

- Ans
- 1. 1949
 - 2. 1939
 - 3. 1950
 - 4. 1929

Question ID : 264330161751
Option 1 ID : 264330634333
Option 2 ID : 264330634332
Option 3 ID : 264330634334
Option 4 ID : 264330634331
Status : Answered
Chosen Option : 3

Q.20 According to the Census of India 2011, identify the correct pair of State and Union Territories which recorded the highest literacy rate.

- Ans**
- 1. Mizoram and Lakshadweep
 - 2. Kerala and Chandigarh
 - 3. Goa and Puducherry
 - 4. Kerala and Lakshadweep

Question ID : 264330161558
Option 1 ID : 264330633559
Option 2 ID : 264330633561
Option 3 ID : 264330633562
Option 4 ID : 264330633560
Status : Answered
Chosen Option : 4

Q.21 The sal tree assumes great significance in a number of tribal communities scattered across eastern India. For instance, _____ festival is celebrated in honour of the tree in Jharkhand.

- Ans**
- 1. Karma
 - 2. Tusu Parab
 - 3. Sarhul
 - 4. Sohrai

Question ID : 264330160836
Option 1 ID : 264330630677
Option 2 ID : 264330630678
Option 3 ID : 264330630676
Option 4 ID : 264330630675
Status : Answered
Chosen Option : 3

Q.22 Geto Sora won the Arena Junior (Boys) International Badminton Championship. He belongs to which state?

- Ans**
- 1. Arunachal Pradesh
 - 2. Mizoram
 - 3. Sikkim
 - 4. Meghalaya

Question ID : 264330158369
Option 1 ID : 264330620836
Option 2 ID : 264330620837
Option 3 ID : 264330620838
Option 4 ID : 264330620835
Status : Answered
Chosen Option : 4

Q.23 Identify the Chhau dancer from the following, who received the Sangeet Natak Akademi Award-2021 (given in February 2023)?

- Ans
- 1. Bharathi Vithal
 - 2. Kumkum Dhar
 - 3. Bhuvan Kumar
 - 4. Rabindra Atibudhi

Question ID : 26433015519
Option 1 ID : 264330609481
Option 2 ID : 264330609480
Option 3 ID : 264330609479
Option 4 ID : 264330609482
Status : Answered
Chosen Option : 2

Q.24 Which of the following Indian musicians was referred to as 'Ghazal King'?

- Ans
- 1. Ghulam Ali
 - 2. Jagjit Singh
 - 3. Pankaj Udhas
 - 4. Mehdi Hassan

Question ID : 264330161774
Option 1 ID : 264330634424
Option 2 ID : 264330634426
Option 3 ID : 264330634425
Option 4 ID : 264330634423
Status : Answered
Chosen Option : 1

Q.25 On 8th April 1929, who among the following two revolutionists threw a bomb in the Central Legislative Assembly?

- Ans
- 1. Bhagat Singh and Rajguru
 - 2. Bhagat Singh and Ram Prasad Bismil
 - 3. Bhagat Singh and Batukeshwar Dutt
 - 4. Bhagat Singh and Sukhdev

Question ID : 264330161746
Option 1 ID : 264330634313
Option 2 ID : 264330634312
Option 3 ID : 264330634311
Option 4 ID : 264330634314
Status : Answered
Chosen Option : 1

Q.1 Select the option that can be used as a one-word substitute for the given group of words.

To go away suddenly and secretly in order to escape from somewhere

- Ans** 1. Abscond
 2. Vanish
 3. Excavate
 4. Extradite

Question ID : 264330151871
 Option 1 ID : 264330595106
 Option 2 ID : 264330595104
 Option 3 ID : 264330595103
 Option 4 ID : 264330595105
 Status : Answered
 Chosen Option : 1

Q.2 Select the most appropriate meaning of the underlined idiom.
 My friend's business has grown by leaps and bounds.

- Ans** 1. rapidly
 2. aimlessly
 3. perfectly
 4. slowly

Question ID : 264330152751
 Option 1 ID : 264330598603
 Option 2 ID : 264330598606
 Option 3 ID : 264330598605
 Option 4 ID : 264330598604
 Status : Answered
 Chosen Option : 1

Q.3 Select the most appropriate option that can substitute the underlined segment in the given sentence.

Peer pressure is bound to effect most of us both positively and negatively.

- Ans** 1. to invoke most of us
 2. to affect most of us
 3. to impede most of us
 4. to prompt most of us

Question ID : 264330151809
 Option 1 ID : 264330594865
 Option 2 ID : 264330594863
 Option 3 ID : 264330594866
 Option 4 ID : 264330594864
 Status : Answered
 Chosen Option : 2

Q.4 Select the most appropriate synonym of the given word.
Peculiar

- Ans 1. Neat
 2. Normal
 3. Strange
 4. Jovial

Question ID : 264330151923
Option 1 ID : 264330595309
Option 2 ID : 264330595308
Option 3 ID : 264330595307
Option 4 ID : 264330595310
Status : Answered
Chosen Option : 3

Q.5 Select the sentence that has NO spelling errors.

- Ans 1. The teacher was impressed with the student's insightfull analysis of the novel, which demonstrated a deep understanding of the complex theames and motifs.
 2. The teacher was impressed with the student's insightful analysis of the novel, which demonstrated a deep understanding of the complex themes and motifs.
 3. The teacher was impressed with the student's insightul analysis of the novel, which demonstrated a deep understanding of the complex themes and motifs.
 4. The teacher was impresed with the student's insightful analysis of the novel, which demonstreted a deep understanding of the complex themes and motifs.

Question ID : 264330152650
Option 1 ID : 264330598205
Option 2 ID : 264330598206
Option 3 ID : 264330598204
Option 4 ID : 264330598203
Status : Answered
Chosen Option : 2

Q.6 Select the INCORRECTLY spelt word.

- Ans 1. Beginning
 2. Writting
 3. Argument
 4. Amateur

Question ID : 264330152646
Option 1 ID : 264330598189
Option 2 ID : 264330598187
Option 3 ID : 264330598190
Option 4 ID : 264330598188
Status : Answered
Chosen Option : 4

Q.7 Select the most appropriate meaning of the underlined idiom in the following sentence.

Tim joined the family business as he failed in his final degree examination. Seeing the growth of the family business now, it seems like Tim's earlier failure was a blessing in disguise.

- Ans**
- 1. A difficult time
 - 2. A mistake
 - 3. Something good that isn't recognised at first
 - 4. A good decision

Question ID : 264330153047
 Option 1 ID : 264330599756
 Option 2 ID : 264330599755
 Option 3 ID : 264330599757
 Option 4 ID : 264330599758
 Status : Answered
 Chosen Option : 3

Q.8 The following sentence has been split into four segments. Identify the segment that contains a grammatical error and select the option which rectifies that error.

AI fiction is a constantly / evolving genre that gives us an peek / into the potential upsides and downsides / of intelligent machines.

- Ans**
- 1. AI fiction is an constantly
 - 2. into a potential upside and downside
 - 3. evolving genre that gives us a peek
 - 4. of intelligent machine.

Question ID : 264330141341
 Option 1 ID : 264330553701
 Option 2 ID : 264330553702
 Option 3 ID : 264330553699
 Option 4 ID : 264330553700
 Status : Answered
 Chosen Option : 3

Q.9 Parts of the following sentence have been underlined and given as options. Select the option that contains an error.

If he will come early, we will leave on time.

- Ans**
- 1. will come
 - 2. If he
 - 3. on time
 - 4. we will

Question ID : 264330144888
 Option 1 ID : 264330567808
 Option 2 ID : 264330567807
 Option 3 ID : 264330567810
 Option 4 ID : 264330567809
 Status : Answered
 Chosen Option : 1

Q.10 Select the most appropriate meaning of the underlined idiom in the following sentence.

I ordered a dozen doughnuts, but the kind baker gave me a baker's dozen.

- Ans
- 1. A group of 12 bakery items
 - 2. A group of 12 bakers
 - 3. A group of 13
 - 4. A group of 12

Question ID : 264330153076
Option 1 ID : 264330599869
Option 2 ID : 264330599870
Option 3 ID : 264330599867
Option 4 ID : 264330599868
Status : Answered
Chosen Option : 3

Q.11 Parts of the following sentence have been underlined and given as options. Select the option that contains an error.

They had two bedrooms among them, one for the girls and one for the boys.

- Ans
- 1. girls and one
 - 2. them, one for
 - 3. bedrooms among
 - 4. had two

Question ID : 264330153210
Option 1 ID : 264330600401
Option 2 ID : 264330600399
Option 3 ID : 264330600402
Option 4 ID : 264330600400
Status : Answered
Chosen Option : 1

Q.12 Select the INCORRECTLY spelt word.

- Ans
- 1. Adopt
 - 2. Advertisement
 - 3. Contantment
 - 4. Container

Question ID : 264330152945
Option 1 ID : 264330599360
Option 2 ID : 264330599359
Option 3 ID : 264330599361
Option 4 ID : 264330599362
Status : Answered
Chosen Option : 3

Q.13 Select the most appropriate ANTONYM of the given word.
Wisdom

- Ans 1. Stupidity
 2. Experience
 3. Modesty
 4. Intelligence

Question ID : 264330152657
Option 1 ID : 264330598232
Option 2 ID : 264330598233
Option 3 ID : 264330598234
Option 4 ID : 264330598231
Status : Answered
Chosen Option : 1

Q.14 Select the option that will improve the underlined part of the given sentence. In case no improvement is needed, select 'No improvement required'.

Jack being the wiser and bolder among the two of us, took the lead, carrying the axe on his shoulder.

- Ans 1. bolder between
 2. boldest among
 3. No improvement required
 4. boldest between

Question ID : 264330153199
Option 1 ID : 264330600356
Option 2 ID : 264330600355
Option 3 ID : 264330600358
Option 4 ID : 264330600357
Status : Answered
Chosen Option : 1

Q.15 Select the option that can be used as a one-word substitute for the underlined group of words.

Many people fought to put an end to slavery during the civil war.

- Ans 1. abolish
 2. absorb
 3. abide
 4. abduct

Question ID : 264330152705
Option 1 ID : 264330598421
Option 2 ID : 264330598419
Option 3 ID : 264330598422
Option 4 ID : 264330598420
Status : Answered
Chosen Option : 1

Q.16 Select the most appropriate ANTONYM of the word given in brackets to fill in the blank.

The doctor said that the patient named Rumi is in the _____(initial) stage of lung cancer.

- Ans**
- 1. terminal
 - 2. innermost
 - 3. early
 - 4. outermost

Question ID : 264330152695
 Option 1 ID : 264330598386
 Option 2 ID : 264330598383
 Option 3 ID : 264330598384
 Option 4 ID : 264330598385
 Status : Answered
 Chosen Option : 4

Q.17 Select the most appropriate option to fill in the blank.
 He generally avoids arguments as he is _____ by nature.

- Ans**
- 1. questionable
 - 2. reliable
 - 3. quick-minded
 - 4. peaceful

Question ID : 264330153549
 Option 1 ID : 264330601697
 Option 2 ID : 264330601698
 Option 3 ID : 264330601695
 Option 4 ID : 264330601696
 Status : Answered
 Chosen Option : 4

Q.18 Select the most appropriate option that can substitute the underlined segment in the given sentence. If there is no need to substitute it, select 'No substitution required'.
 The pandemic has challenged education systems to ensure learning continuity, substantially increasing the demands placed on teachers.

- Ans**
- 1. education systems to ensuring learning
 - 2. education systems for ensure learning
 - 3. education systems in ensure learning
 - 4. No substitution required

Question ID : 264330151901
 Option 1 ID : 264330595219
 Option 2 ID : 264330595221
 Option 3 ID : 264330595220
 Option 4 ID : 264330595222
 Status : Answered
 Chosen Option : 4

Q.19 Select the most appropriate idiom from the given options to fill in the blank.
We broke the traffic rules unknowingly while coming back from the party, now we have to _____ sooner or later.

- Ans 1. face the music
 2. look sharp
 3. cry for the moon
 4. bid defiance

Question ID : 264330152687
Option 1 ID : 264330598354
Option 2 ID : 264330598353
Option 3 ID : 264330598351
Option 4 ID : 264330598352
Status : Answered
Chosen Option : 1

Q.20 The following sentence has been split into four segments. Identify the segment that contains a grammatical error.

Guard over / making mistakes / by carefully checking / the assigned task.

- Ans 1. Guard over
 2. by carefully checking
 3. the assigned task
 4. making mistakes

Question ID : 264330155428
Option 1 ID : 264330609119
Option 2 ID : 264330609121
Option 3 ID : 264330609122
Option 4 ID : 264330609120
Status : Answered
Chosen Option : 2

Comprehension:

In the following passage some words have been deleted. Read the passage carefully and select the most appropriate option to fill in each blank.

_____ (1) university or college degree has long been the traditional hallmark of a
_____ (2) candidate in the professional arena. While it historically provided the most
widely accepted standard of qualification and skill for professionals, many companies today
_____ (3) their hiring process and considering a broader list of criteria to judge a
candidate's ability. Organisations are reducing their reliance on college degrees as a sole
marker of competence and instead placing greater emphasis _____ (4) the practical skills
candidates have acquired through work experience. This shift in hiring is of particular
relevance to India, which has the _____ (5) youth population in the world.

SubQuestion No : 21

Q.21 Select the most appropriate option to fill in blank number 1.

- Ans 1. The
 2. That
 3. A
 4. An

Question ID : 264330152766
Option 1 ID : 264330598657
Option 2 ID : 264330598658
Option 3 ID : 264330598655
Option 4 ID : 264330598656
Status : Answered
Chosen Option : 1

Comprehension:

In the following passage some words have been deleted. Read the passage carefully and select the most appropriate option to fill in each blank.

_____ (1) university or college degree has long been the traditional hallmark of a _____ (2) candidate in the professional arena. While it historically provided the most widely accepted standard of qualification and skill for professionals, many companies today _____ (3) their hiring process and considering a broader list of criteria to judge a candidate's ability. Organisations are reducing their reliance on college degrees as a sole marker of competence and instead placing greater emphasis _____ (4) the practical skills candidates have acquired through work experience. This shift in hiring is of particular relevance to India, which has the _____ (5) youth population in the world.

SubQuestion No : 22

Q.22 Select the most appropriate option to fill in blank number 2.

- Ans** 1. was qualify
 2. qualify
 3. qualification
 4. qualified

Question ID : 264330152767

Option 1 ID : 264330598662

Option 2 ID : 264330598660

Option 3 ID : 264330598661

Option 4 ID : 264330598659

Status : Answered

Chosen Option : 4

Comprehension:

In the following passage some words have been deleted. Read the passage carefully and select the most appropriate option to fill in each blank.

_____ (1) university or college degree has long been the traditional hallmark of a _____ (2) candidate in the professional arena. While it historically provided the most widely accepted standard of qualification and skill for professionals, many companies today _____ (3) their hiring process and considering a broader list of criteria to judge a candidate's ability. Organisations are reducing their reliance on college degrees as a sole marker of competence and instead placing greater emphasis _____ (4) the practical skills candidates have acquired through work experience. This shift in hiring is of particular relevance to India, which has the _____ (5) youth population in the world.

SubQuestion No : 23

Q.23 Select the most appropriate option to fill in blank number 3.

- Ans** 1. was changed
 2. was changing
 3. changing
 4. are changing

Question ID : 264330152768

Option 1 ID : 264330598663

Option 2 ID : 264330598664

Option 3 ID : 264330598666

Option 4 ID : 264330598665

Status : Answered

Chosen Option : 4

Comprehension:

In the following passage some words have been deleted. Read the passage carefully and select the most appropriate option to fill in each blank.

_____ (1) university or college degree has long been the traditional hallmark of a _____ (2) candidate in the professional arena. While it historically provided the most widely accepted standard of qualification and skill for professionals, many companies today _____ (3) their hiring process and considering a broader list of criteria to judge a candidate's ability. Organisations are reducing their reliance on college degrees as a sole marker of competence and instead placing greater emphasis _____ (4) the practical skills candidates have acquired through work experience. This shift in hiring is of particular relevance to India, which has the _____ (5) youth population in the world.

SubQuestion No : 24

Q.24 Select the most appropriate option to fill in blank number 4.

- Ans**
- 1. about
 - 2. for
 - 3. with
 - 4. on

Question ID : 264330152769
 Option 1 ID : 264330598669
 Option 2 ID : 264330598670
 Option 3 ID : 264330598668
 Option 4 ID : 264330598667
 Status : Answered
 Chosen Option : 4

Comprehension:

In the following passage some words have been deleted. Read the passage carefully and select the most appropriate option to fill in each blank.

_____ (1) university or college degree has long been the traditional hallmark of a _____ (2) candidate in the professional arena. While it historically provided the most widely accepted standard of qualification and skill for professionals, many companies today _____ (3) their hiring process and considering a broader list of criteria to judge a candidate's ability. Organisations are reducing their reliance on college degrees as a sole marker of competence and instead placing greater emphasis _____ (4) the practical skills candidates have acquired through work experience. This shift in hiring is of particular relevance to India, which has the _____ (5) youth population in the world.

SubQuestion No : 25

Q.25 Select the most appropriate option to fill in blank number 5.

- Ans**
- 1. largest
 - 2. longest
 - 3. biggest
 - 4. most highest

Question ID : 264330152770
 Option 1 ID : 264330598673
 Option 2 ID : 264330598674
 Option 3 ID : 264330598672
 Option 4 ID : 264330598671
 Status : Answered
 Chosen Option : 1