

SSC MTS 2023 Tier 1 Sept 4 Shift 2 Question Paper with Answers

Roll Number	
Candidate Name	
Exam Date	04/09/2023
Exam Time	12:30 PM - 2:30 PM
Subject	MTS Non Tech Havaladar CBIC and CBN Examination 2023

Section : Numerical and Mathematical Ability

Q.1 A sum invested at the rate of 6% simple interest per annum grows to ₹1,13,880 in 5 years. What is the simple interest, if the same amount is invested for 8 years at the rate of 9% per annum?

- Ans** ✓ 1. ₹63,072
✗ 2. ₹60,565
✗ 3. ₹65,392
✗ 4. ₹58,050

Question ID : 264330158753
Option 1 ID : 264330622371
Option 2 ID : 264330622374
Option 3 ID : 264330622373
Option 4 ID : 264330622372
Status : Answered
Chosen Option : 1

Q.2 Find the compound interest (Compounded annually) on ₹2,000 for $2\frac{1}{2}$ years at 10% per annum.

- Ans** ✗ 1. ₹ 561
✗ 2. ₹ 500
✗ 3. ₹ 521
✓ 4. ₹ 541

Question ID : 264330156078
Option 1 ID : 264330611711
Option 2 ID : 264330611713
Option 3 ID : 264330611714
Option 4 ID : 264330611712
Status : Answered
Chosen Option : 3

Q.3 Study the given table and answer the question that follows.
The table shows the number of voters in four different villages P, Q, R, S.

Villages	Total number of registered voters	Percentage of people who voted (Out of the total number of registered voters)
P	1100	68
Q	1450	62
R	1200	73
S	1124	87

The number of people who did not vote in village P is what percentage more than that who did not vote in village R?

Ans

1. $6\frac{52}{81}\%$

2. $8\frac{52}{81}\%$

3. $7\frac{52}{81}\%$

4. $9\frac{52}{81}\%$

Question ID : 264330157907

Option 1 ID : 264330618987

Option 2 ID : 264330618989

Option 3 ID : 264330618988

Option 4 ID : 264330618990

Status : Answered

Chosen Option : 3

Q.4 Find the total surface area of a cuboid whose dimensions are 18 m, 6 m and 3 m.

Ans

1. 90 m^2

2. 180 m^2

3. 324 m^2

4. 360 m^2

Question ID : 264330153898

Option 1 ID : 264330603056

Option 2 ID : 264330603055

Option 3 ID : 264330603058

Option 4 ID : 264330603057

Status : Answered

Chosen Option : 4

Q.5 Yug covers a certain distance with a speed of 56 km/h in $\frac{3}{2}$ hours. If he wants to cover the same distance in 7 hours, what would be his speed (in km/h)?

- Ans**
- 1. 16
 - 2. 20
 - 3. 14
 - 4. 12

Question ID : 264330155752
Option 1 ID : 264330610413
Option 2 ID : 264330610414
Option 3 ID : 264330610412
Option 4 ID : 264330610411
Status : Answered
Chosen Option : 4

Q.6 Vikram saves 13% of his monthly salary. If his monthly expenditure is ₹5,220, then his monthly savings is:

- Ans**
- 1. ₹680
 - 2. ₹580
 - 3. ₹349
 - 4. ₹780

Question ID : 264330156430
Option 1 ID : 264330613112
Option 2 ID : 264330613114
Option 3 ID : 264330613111
Option 4 ID : 264330613113
Status : Answered
Chosen Option : 4

Q.7 20 men can complete a piece of work in 40 days, and 40 women can do the same work in 60 days. If 10 men and 20 women work together, then in how many days will the work be completed?

- Ans**
- 1. 60
 - 2. 50
 - 3. 48
 - 4. 40

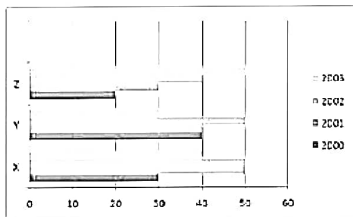
Question ID : 264330156012
Option 1 ID : 264330611447
Option 2 ID : 264330611450
Option 3 ID : 264330611449
Option 4 ID : 264330611448
Status : Answered
Chosen Option : 3

Q.8 A grocery seller mixes two varieties of tea costing ₹300 per kg and ₹160 per kg in such a ratio that by selling this mixture at the rate of ₹187 per kg the shopkeeper earns 10% profit. In what respective ratio does the grocery seller mix the two varieties of tea?

- Ans**
- 1. 2 : 13
 - 2. 13 : 3
 - 3. 13 : 2
 - 4. 1 : 13

Question ID : 264330154118
 Option 1 ID : 264330603936
 Option 2 ID : 264330603937
 Option 3 ID : 264330603935
 Option 4 ID : 264330603938
 Status : Answered
 Chosen Option : 1

Q.9 The following bar graph indicates the production of cement by 3 companies X, Y and Z during the years 2000 - 2003. The quantity is in lakh bags. Study the bar graph carefully and answer the question.



What is the ratio of the average production of company X during the period 2000 – 2003 to the production of company Y during the same period (in lakh bags).

- Ans**
- 1. 17 : 16
 - 2. 8 : 7
 - 3. 12 : 17
 - 4. 10 : 7

Question ID : 264330153858
 Option 1 ID : 264330602897
 Option 2 ID : 264330602895
 Option 3 ID : 264330602898
 Option 4 ID : 264330602896
 Status : Answered
 Chosen Option : 3

Q.10 The least common multiple (LCM) of p and q is r . The LCM of p^2q and pq^2 is _____.

- Ans**
- 1. pqr^3
 - 2. pqr
 - 3. pq
 - 4. pqr^2

Question ID : 264330156247
 Option 1 ID : 264330612390
 Option 2 ID : 264330612388
 Option 3 ID : 264330612387
 Option 4 ID : 264330612389
 Status : Answered
 Chosen Option : 2

Q.11 Two trains started from a station, at the same time in the same direction, at speeds of 90 km/h and 80 km/h. What will be the distance between the two trains after 5 hours?

- Ans**
- 1. 55 km
 - 2. 50 km
 - 3. 45 km
 - 4. 40 km

Question ID : 264330155971
Option 1 ID : 264330611285
Option 2 ID : 264330611283
Option 3 ID : 264330611286
Option 4 ID : 264330611284
Status : Answered
Chosen Option : 2

Q.12 A solid piece of metal, cuboidal in shape, with dimensions 12 cm, 9 cm and 2 cm is recast into a cube. What is the lateral surface area (in cm^2) of the cube?

- Ans**
- 1. 144
 - 2. 216
 - 3. 204
 - 4. 162

Question ID : 264330153793
Option 1 ID : 264330602636
Option 2 ID : 264330602635
Option 3 ID : 264330602638
Option 4 ID : 264330602637
Status : Answered
Chosen Option : 1

Q.13 A person buys a table fan for ₹2,800 and sells it at a loss of 12%. What is the selling price of the table fan?

- Ans**
- 1. ₹2,466
 - 2. ₹2,468
 - 3. ₹2,462
 - 4. ₹2,464

Question ID : 264330156220
Option 1 ID : 264330612281
Option 2 ID : 264330612282
Option 3 ID : 264330612279
Option 4 ID : 264330612280
Status : Answered
Chosen Option : 4

Q.14 If $A : B = 7 : 9$ and $B : C = 5 : 6$, Find the ratio of C and A respectively.

- Ans
- 1. 15 : 14
 - 2. 14 : 15
 - 3. 54 : 35
 - 4. 35 : 54

Question ID : 264330153767
Option 1 ID : 264330602534
Option 2 ID : 264330602533
Option 3 ID : 264330602532
Option 4 ID : 264330602531
Status : Answered
Chosen Option : 4

Q.15 The average weight of 17 men is 63 kg and the average weight of 36 women is 54 kg. What is the average weight (in kg) of all the men and women together? (Rounded off to the nearest integer)

- Ans
- 1. 59
 - 2. 62
 - 3. 57
 - 4. 52

Question ID : 264330155727
Option 1 ID : 264330610312
Option 2 ID : 264330610311
Option 3 ID : 264330610313
Option 4 ID : 264330610314
Status : Answered
Chosen Option : 1

Q.16 A vessel contains liquid A and liquid B in the ratio 4 : 9. If 8 litres of liquid A is added to the vessel, the new ratio becomes 8 : 9. Find the quantity of liquid A (in litres) in the original mixture.

- Ans
- 1. 12
 - 2. 9
 - 3. 8
 - 4. 6

Question ID : 264330155729
Option 1 ID : 264330610319
Option 2 ID : 264330610320
Option 3 ID : 264330610321
Option 4 ID : 264330610322
Status : Answered
Chosen Option : 3

Q.17 Which of the following expressions has value equal to 0?

Ans

1. $(2 \times 3 + 5 - (1 - 2(3 - 2 \times 2)))$

2. $(2 \times 3 - 5 - (1 + 2(3 - 2 \times 2)))$

3. $(2 \times 3 - 5 + (1 + 2(3 - 2 \times 2)))$

4. $(2 \times 3 - 5 - (1 - 2(3 - 2 \times 2)))$

Question ID : 264330153796

Option 1 ID : 264330602650

Option 2 ID : 264330602648

Option 3 ID : 264330602649

Option 4 ID : 264330602647

Status : Answered

Chosen Option : 3

Q.18 Two numbers are in the ratio of 6 : 7. If the difference between these numbers is 16, then find the numbers.

Ans

1. 96, 112

2. 80, 96

3. 120, 136

4. 104, 120

Question ID : 264330153876

Option 1 ID : 264330602967

Option 2 ID : 264330602969

Option 3 ID : 264330602968

Option 4 ID : 264330602970

Status : Answered

Chosen Option : 1

Q.19 A, B and C can complete a work in 10, 15 and 20 days, respectively. They work on alternate days such that 1st day A, 2nd day B and 3rd day C. Again 4th day A, 5th day B and so on. If they work in the same way, in how many days will the work be completed?

Ans

1. $13 \frac{1}{4}$

2. 15

3. 14

4. $13 \frac{1}{2}$

Question ID : 264330154060

Option 1 ID : 264330603704

Option 2 ID : 264330603705

Option 3 ID : 264330603703

Option 4 ID : 264330603706

Status : Answered

Chosen Option : 4

Q.20 A grocer purchased 50 kg of sugar at ₹40 per kg and mixed with 70 kg of sugar at ₹30 per kg. At what rate should he sell the mixture (per kg) to gain 20%?

- Ans**
- 1. ₹60
 - 2. ₹20
 - 3. ₹35
 - 4. ₹41

Question ID : 264330155997
Option 1 ID : 264330611387
Option 2 ID : 264330611389
Option 3 ID : 264330611388
Option 4 ID : 264330611390
Status : Answered
Chosen Option : 4

Section : Reasoning Ability and Problem Solving

Q.1 2 is related to 40 following a certain logic. Following the same logic, 5 is related to 250. To which of the following is 7 related to, following the same logic?

- Ans**
- 1. 470
 - 2. 490
 - 3. 450
 - 4. 400

Question ID : 264330151579
Option 1 ID : 264330593945
Option 2 ID : 264330593946
Option 3 ID : 264330593944
Option 4 ID : 264330593943
Status : Answered
Chosen Option : 2

Q.2 Select the combination of letters that when sequentially placed in the blanks of the given series, will complete the series.

R _ _ RT _ R _ R _ TR

- Ans**
- 1. RTRRT
 - 2. TTTRR
 - 3. TRRTR
 - 4. RTTTR

Question ID : 264330151641
Option 1 ID : 264330594194
Option 2 ID : 264330594191
Option 3 ID : 264330594193
Option 4 ID : 264330594192
Status : Answered
Chosen Option : 3

Q.3 J, K, P, Q, R and M are sitting around a circular table facing the centre. J is sitting to the immediate left of M. R is sitting 2nd to the left of J. K is sitting 3rd to the right of J. P sits to the immediate right of R. Who sits 2nd to the left of K?

- Ans**
- 1. R
 - 2. Q
 - 3. M
 - 4. P

Question ID : 264330155651
Option 1 ID : 264330610007
Option 2 ID : 264330610010
Option 3 ID : 264330610009
Option 4 ID : 264330610008
Status : Answered
Chosen Option : 3

Q.4 What should come in place of '?' in the given series?

3 20 54 ? 258 530 1074

- Ans**
- 1. 122
 - 2. 128
 - 3. 118
 - 4. 124

Question ID : 264330151499
Option 1 ID : 264330593624
Option 2 ID : 264330593626
Option 3 ID : 264330593623
Option 4 ID : 264330593625
Status : Answered
Chosen Option : 1

Q.5 Read the given statements and conclusions carefully. You have to take the given statements to be true even if they seem to be at variance from commonly known facts. You have to decide which conclusion/s logically follow/s from the given statements.

Statements: All crows are sparrows. Some sparrows are parrots. All parrots are yellow.

Conclusion I: Some crows are parrots.

Conclusion II: Some yellow are parrots.

- Ans**
- 1. Only conclusion (II) is follow.
 - 2. Both conclusions (I) and (II) are follow.
 - 3. Only conclusion (I) is follow.
 - 4. Neither conclusion (I) nor (II) is follow.

Question ID : 264330155929
Option 1 ID : 264330611120
Option 2 ID : 264330611122
Option 3 ID : 264330611119
Option 4 ID : 264330611121
Status : Answered
Chosen Option : 1

Q.6 The position of how many letters will remain unchanged if each of the letter in the word 'CATEGORY' is arranged in alphabetical order?

- Ans**
- 1. Three
 - 2. Two
 - 3. None
 - 4. One

Question ID : 264330154327
Option 1 ID : 264330604774
Option 2 ID : 264330604771
Option 3 ID : 264330604773
Option 4 ID : 264330604772
Status : Answered
Chosen Option : 4

Q.7 What should come in place of ? in the given series?

978 967 956 945 934 ?

- Ans**
- 1. 922
 - 2. 923
 - 3. 921
 - 4. 924

Question ID : 264330151553
Option 1 ID : 264330593840
Option 2 ID : 264330593841
Option 3 ID : 264330593839
Option 4 ID : 264330593842
Status : Answered
Chosen Option : 2

Q.8 What should come in place of ? in the given series based on the English alphabetical order?

ETM, AWO, WZQ, SCS, ?

- Ans**
- 1. MEU
 - 2. NFV
 - 3. OFU
 - 4. MEV

Question ID : 264330155807
Option 1 ID : 264330610632
Option 2 ID : 264330610631
Option 3 ID : 264330610634
Option 4 ID : 264330610633
Status : Answered
Chosen Option : 3

Q.9 In a certain code language, 'YJM' is coded as '26-11-14' and 'SOP' is coded as '20-16-17'. What is the code for 'BTX' in the given code language?

- Ans**
- 1. 3-21-25
 - 2. 5-22-24
 - 3. 5-23-25
 - 4. 4-22-24

Question ID : 264330155822
Option 1 ID : 264330610691
Option 2 ID : 264330610694
Option 3 ID : 264330610693
Option 4 ID : 264330610692
Status : Answered
Chosen Option : 1

Q.10 If G means '-'; D means '*'; A means '+'; B means '÷', then what will come in place of the question mark (?) in the following equation?

$$19 \text{ D } 6 \text{ B } 34 \text{ A } 2 \text{ G } 27 = ?$$

- Ans**
- 1. 126
 - 2. 104
 - 3. 65
 - 4. 83

Question ID : 264330154688
Option 1 ID : 264330606218
Option 2 ID : 264330606217
Option 3 ID : 264330606216
Option 4 ID : 264330606215
Status : Answered
Chosen Option : 2

Q.11 In a certain code language, 'LIAR' is coded as '5148' and 'REAL' is coded as '1582'. What is the code for 'E' in the given code language?

- Ans**
- 1. 5
 - 2. 8
 - 3. 2
 - 4. 1

Question ID : 264330151702
Option 1 ID : 264330594437
Option 2 ID : 264330594436
Option 3 ID : 264330594438
Option 4 ID : 264330594435
Status : Answered
Chosen Option : 3

Q.12 Select the combination of letters that when sequentially placed in the blanks of the given series will make it logically complete.

KC_OK_PO_YSOKWV_ K_YO

- Ans**
- 1. MDHTV
 - 2. LJMST
 - 3. KJNVL
 - 4. MAKOU

Question ID : 264330156319

Option 1 ID : 264330612676

Option 2 ID : 264330612677

Option 3 ID : 264330612675

Option 4 ID : 264330612678

Status : Answered

Chosen Option : 2

Q.13 In the following number-pairs, the second number is obtained by applying certain mathematical operations to the first number. Select the set in which the numbers are related in the same way as are the numbers of the following sets.

(NOTE: Operations should be performed on the whole numbers, without breaking down the numbers into its constituent digits. E.g. 13 – Operations on 13 such as adding / subtracting / multiplying etc. to 13 can be performed. Breaking down 13 into 1 and 3 and then performing mathematical operations on 1 and 3 is not allowed)

65, 74

87, 96

- Ans**
- 1. 75, 123
 - 2. 63, 157
 - 3. 81, 156
 - 4. 92, 101

Question ID : 264330151622

Option 1 ID : 264330594117

Option 2 ID : 264330594118

Option 3 ID : 264330594116

Option 4 ID : 264330594115

Status : Answered

Chosen Option : 4

Q.14 What should come in place of '?' in the given series?

13 52 169 520 1573 ?

- Ans**
- 1. 4781
 - 2. 4732
 - 3. 4895
 - 4. 4863

Question ID : 264330151477

Option 1 ID : 264330593536

Option 2 ID : 264330593535

Option 3 ID : 264330593538

Option 4 ID : 264330593537

Status : Answered

Chosen Option : 2

Q.15 Which figure should replace the question mark (?) if the following figure series were to be continued?

P	E	8	↑	8	3	3	8	↑	E	↑	□	
	□			P			□			3		?
↑	A	3	□	E	A	E	A	□	□	8	A	

Ans

X 1.

□	↑	E
	□	
8	A	3

✓ 2.

□	↑	E
	L	
8	A	□

X 3.

□	E	↑
	□	
8	A	3

X 4.

□	E	↑
	L	
8	A	□

Question ID : 264330154734

Option 1 ID : 264330606400

Option 2 ID : 264330606402

Option 3 ID : 264330606401

Option 4 ID : 264330606399

Status : Answered

Chosen Option : 2

Q.16 उस शब्द-युग्म का चयन कीजिए जो नीचे दिए गए शब्दों के युग्म में व्यक्त किए गए समान संबंध का सबसे अच्छा निरूपण करता है।

(शब्दों को अर्थपूर्ण हिंदी शब्दों के रूप में माना जाना चाहिए और उन्हें शब्द में अक्षरों की संख्या/व्यंजन/स्वरो की संख्या के आधार पर एक दूसरे से संबंधित नहीं किया जाना चाहिए।)

सराहना : प्रशंसा करना

Ans

- ✓ 1. दावत देना : खातिर करना
- ✗ 2. रिझाना : ठुकरा देना
- ✗ 3. सुंदर बनाना : तरोताज़ा करना
- ✗ 4. सिखाना : सीखना

Question ID : 264330154640

Option 1 ID : 264330606023

Option 2 ID : 264330606026

Option 3 ID : 264330606025

Option 4 ID : 264330606024

Status : Answered

Chosen Option : 1

Q.17 Read the given statement(s) and conclusions carefully. Assuming that the information given in the statements is true, even if it appears to be at variance with commonly known facts, decide which of the given conclusions logically follow(s) from the statement(s).

Statements: All the actors are girls. All the girls are beautiful.

Conclusions:

- (I) All the actors are beautiful.
- (II) Some girls are actors.

Ans

- ✓ 1. Both conclusions (I) and (II) are follows.
- ✗ 2. Only conclusion (II) is follows.
- ✗ 3. Only conclusion (I) is follows.
- ✗ 4. Neither conclusion (I) nor (II) is follows.

Question ID : 264330154431

Option 1 ID : 264330605190

Option 2 ID : 264330605188

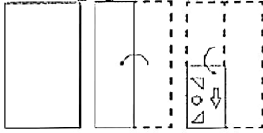
Option 3 ID : 264330605187

Option 4 ID : 264330605189

Status : Answered

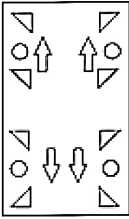
Chosen Option : 1

Q.18 The sequence of folding a piece of paper and the manner in which the folded paper is cut is shown in the following figures. How would this paper look when unfolded?

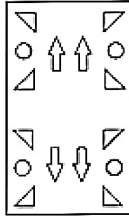


Ans

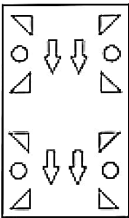
X 1.



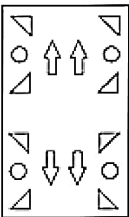
✓ 2.



X 3.



X 4.



Question ID : 264330155613

Option 1 ID : 264330609857

Option 2 ID : 264330609858

Option 3 ID : 264330609855

Option 4 ID : 264330609856

Status : Answered

Chosen Option : 2

Q.19 What will come in place of '?' in the following equation, if '+' and '×' are interchanged and '-' and '+' are interchanged?

$$18 - 9 - 4 \times 3 - 5 = ?$$

Ans

X 1. 17

✓ 2. 13

X 3. 18

X 4. 19

Question ID : 264330154670

Option 1 ID : 264330606145

Option 2 ID : 264330606143

Option 3 ID : 264330606144

Option 4 ID : 264330606146

Status : Answered

Chosen Option : 2

Q.20 Select the correct mirror image of the given figure when the mirror is placed at MN as shown below.



- Ans
- 1. R h G 9 n a
 - 2. a n e 9 G h R
 - 3. a u e 9 h R
 - 4. a n e 9 h R

Question ID : 264330151512
Option 1 ID : 264330593676
Option 2 ID : 264330593675
Option 3 ID : 264330593677
Option 4 ID : 264330593678
Status : Answered
Chosen Option : 3

Section : General Awareness

Q.1 The Gua and Noamundi mines are located in with state of India?

- Ans
- 1. Assam
 - 2. Haryana
 - 3. Rajasthan
 - 4. Jharkhand

Question ID : 264330161527
Option 1 ID : 264330633435
Option 2 ID : 264330633438
Option 3 ID : 264330633437
Option 4 ID : 264330633436
Status : Answered
Chosen Option : 4

Q.2 What is a fiscal year?

- Ans
- 1. A year that represents the financial reporting period for the government
 - 2. A year with a surplus in government revenue
 - 3. A year with a deficit in government revenue
 - 4. A year in which tax rates are increased

Question ID : 264330157272
Option 1 ID : 264330616454
Option 2 ID : 264330616451
Option 3 ID : 264330616452
Option 4 ID : 264330616453
Status : Answered
Chosen Option : 1

Q.3 The Constitution (Scheduled Castes and Scheduled Tribes) Order (Second Amendment) Bill, 2022, was passed in December 2022 and is related to which state?

- Ans
- 1. Bihar
 - 2. Uttarakhand
 - 3. Uttar Pradesh
 - 4. Karnataka

Question ID : 264330158334
Option 1 ID : 264330620698
Option 2 ID : 264330620696
Option 3 ID : 264330620695
Option 4 ID : 264330620697
Status : Not Answered
Chosen Option : --

Q.4 Identify the Kuchipudi dancer from following, who was awarded with 'Padma Shri' in the year 2022.

- Ans
- 1. Vidyanand Sarek
 - 2. Padmaja Reddy
 - 3. Dr. Veeraswamy Seshiah
 - 4. KV Rabiya

Question ID : 264330155528
Option 1 ID : 264330609516
Option 2 ID : 264330609517
Option 3 ID : 264330609515
Option 4 ID : 264330609518
Status : Answered
Chosen Option : 2

Q.5 Buddha Purnima is marked on a full moon day in the Hindu month of _____.

- Ans
- 1. Vaisakh
 - 2. Jaistha
 - 3. Bhadra
 - 4. Ashadha

Question ID : 264330160830
Option 1 ID : 264330630651
Option 2 ID : 264330630652
Option 3 ID : 264330630654
Option 4 ID : 264330630653
Status : Not Answered
Chosen Option : --

Q.6 Which of the following is the official language of Afghanistan?

- Ans
- 1. Sinhala
 - 2. Burmese
 - 3. Dari
 - 4. Dzongkha

Question ID : 264330160175
Option 1 ID : 264330628040
Option 2 ID : 264330628042
Option 3 ID : 264330628039
Option 4 ID : 264330628041
Status : Answered
Chosen Option : 3

Q.7 Who started the temple entry movement in 1927?

- Ans 1. Mahadev Govind Ranade
 2. Bhimrao Ambedkar
 3. Mahatma Gandhi
 4. Annie Besant

Question ID : 264330162350
Option 1 ID : 264330636729
Option 2 ID : 264330636728
Option 3 ID : 264330636727
Option 4 ID : 264330636730
Status : Answered
Chosen Option : 2

Q.8 In which state is Gobind Sagar (Bhakra Nangal Project) located?

- Ans 1. Himachal Pradesh
 2. Gujarat
 3. Rajasthan
 4. Punjab

Question ID : 264330160140
Option 1 ID : 264330627900
Option 2 ID : 264330627902
Option 3 ID : 264330627901
Option 4 ID : 264330627899
Status : Answered
Chosen Option : 1

Q.9 Pandit Ravi Shankar is known worldwide for playing which of the following musical instruments?

- Ans 1. Mohan Veena
 2. Sarod
 3. Been
 4. Sitar

Question ID : 264330161771
Option 1 ID : 264330634414
Option 2 ID : 264330634413
Option 3 ID : 264330634411
Option 4 ID : 264330634412
Status : Answered
Chosen Option : 4

Q.10 The Arabian Sea is an extension of which of the following oceans?

- Ans 1. Pacific Ocean
 2. Southern Ocean
 3. Arctic Ocean
 4. Indian ocean

Question ID : 264330157836
Option 1 ID : 264330618703
Option 2 ID : 264330618706
Option 3 ID : 264330618705
Option 4 ID : 264330618704
Status : Answered
Chosen Option : 4

Q.11 Which of the following is a dimension of microfinance institutions (MFIs) in India?

- Ans
- 1. Outreach to rural areas
 - 2. Loan interest rates
 - 3. Investment in the stock market
 - 4. Availability of credit cards

Question ID : 264330157292
Option 1 ID : 264330616534
Option 2 ID : 264330616531
Option 3 ID : 264330616533
Option 4 ID : 264330616532
Status : Answered
Chosen Option : 2

Q.12 Shambhu Maharaj was a renowned guru of which of the following Gharanas of Kathak?

- Ans
- 1. Lucknow
 - 2. āipur
 - 3. Raigarh
 - 4. Banaras

Question ID : 264330160810
Option 1 ID : 264330630572
Option 2 ID : 264330630571
Option 3 ID : 264330630574
Option 4 ID : 264330630573
Status : Answered
Chosen Option : 1

Q.13 Which is the oldest Stupa of the Buddhist Period?

- Ans
- 1. Dhamek Stupa
 - 2. Mahabodhi Stupa
 - 3. Kesariya Stupa
 - 4. Sanchi Stupa

Question ID : 264330160761
Option 1 ID : 264330630378
Option 2 ID : 264330630375
Option 3 ID : 264330630376
Option 4 ID : 264330630377
Status : Not Answered
Chosen Option : --

Q.14 Who conducts elections for both the houses of Parliament in India?

- Ans
- 1. Ministry of Parliamentary Affairs
 - 2. Election Commission
 - 3. President
 - 4. Prime Minister

Question ID : 264330160860
Option 1 ID : 264330630773
Option 2 ID : 264330630771
Option 3 ID : 264330630774
Option 4 ID : 264330630772
Status : Answered
Chosen Option : 2

Q.15 The third battle of Panipat was fought in which of the following years?

- Ans 1. 1761
 2. 1707
 3. 1786
 4. 1751

Question ID : 264330161734
Option 1 ID : 264330634264
Option 2 ID : 264330634263
Option 3 ID : 264330634266
Option 4 ID : 264330634265
Status : Answered
Chosen Option : 1

Q.16 'Untouchable' is a novel written by:

- Ans 1. Mulk Raj Anand
 2. RC Majumdar
 3. Premchand
 4. Bankim Chandra Chattopadhyay

Question ID : 264330155498
Option 1 ID : 264330609395
Option 2 ID : 264330609396
Option 3 ID : 264330609398
Option 4 ID : 264330609397
Status : Answered
Chosen Option : 2

Q.17 Which dance form is associated with Natwari Dance?

- Ans 1. Kathak
 2. Kuchipudi
 3. Odissi
 4. Kathakali

Question ID : 264330159053
Option 1 ID : 264330623572
Option 2 ID : 264330623574
Option 3 ID : 264330623571
Option 4 ID : 264330623573
Status : Not Answered
Chosen Option : --

Q.18 Birsa Munda hockey stadium is one of the India's largest hockey stadium. In which state is this stadium situated?

- Ans 1. Madhya Pradesh
 2. Bihar
 3. Odisha
 4. Chhattisgarh

Question ID : 264330158355
Option 1 ID : 264330620781
Option 2 ID : 264330620779
Option 3 ID : 264330620782
Option 4 ID : 264330620780
Status : Answered
Chosen Option : 3

Q.19 The directive principles are largely classified into three broad categories. Which of the following is NOT the part of this classification?

- Ans
- 1. Liberal
 - 2. Socialistic
 - 3. Gandhian
 - 4. Authoritative

Question ID : 264330160859
Option 1 ID : 264330630769
Option 2 ID : 264330630767
Option 3 ID : 264330630768
Option 4 ID : 264330630770
Status : Answered
Chosen Option : 4

Q.20 Which of the following countries did India defeat to clinch its maiden Women's Junior Hockey Asia Cup title?

- Ans
- 1. Japan
 - 2. Chinese Taipei
 - 3. Malaysia
 - 4. South Korea

Question ID : 264330161129
Option 1 ID : 264330631848
Option 2 ID : 264330631850
Option 3 ID : 264330631849
Option 4 ID : 264330631847
Status : Answered
Chosen Option : 2

Q.21 Who among the following is the author of the book 'Sita: An Illustrated Retelling of the Ramayana'?

- Ans
- 1. Ravinder Singh
 - 2. Devdutt Pattanaik
 - 3. Amish Tripathi
 - 4. Durjoy Datta

Question ID : 264330155457
Option 1 ID : 264330609234
Option 2 ID : 264330609233
Option 3 ID : 264330609231
Option 4 ID : 264330609232
Status : Not Answered
Chosen Option : --

Q.22 Which soft metal in group 1 of the periodic table tarnishes within a few seconds of exposure to air?

- Ans
- 1. Barium
 - 2. Sodium
 - 3. Strontium
 - 4. Francium

Question ID : 264330161054
Option 1 ID : 264330631548
Option 2 ID : 264330631549
Option 3 ID : 264330631547
Option 4 ID : 264330631550
Status : Answered
Chosen Option : 1

Q.23 The 'Ka Shad Mastieh' or victory dance of the _____ tribe of Meghalaya is an ancient war dance performed during the prominent festival of the tribe.

- Ans
- 1. Bhoi
 - 2. War
 - 3. Khasi
 - 4. dintia

Question ID : 264330161345
Option 1 ID : 264330632709
Option 2 ID : 264330632710
Option 3 ID : 264330632708
Option 4 ID : 264330632707
Status : Answered
Chosen Option : 3

Q.24 What is the weight of the ball in handball for men?

- Ans
- 1. 425 to 475 gm
 - 2. 325 to 375 gm
 - 3. 525 to 575 gm
 - 4. 225 to 275 gm

Question ID : 264330158248
Option 1 ID : 264330620353
Option 2 ID : 264330620351
Option 3 ID : 264330620354
Option 4 ID : 264330620352
Status : Not Answered
Chosen Option : --

Q.25 Which vitamin is needed for a healthy immune system, low-light vision, and healthy skin?

- Ans**
- 1. Vitamin K
 - 2. Vitamin B2
 - 3. Vitamin B9
 - 4. Vitamin A

Question ID : 264330160991
Option 1 ID : 264330631296
Option 2 ID : 264330631298
Option 3 ID : 264330631297
Option 4 ID : 264330631295
Status : Answered
Chosen Option : 4

Section : English Language and Comprehension

Q.1 Select the option that can be used as a one-word substitute for the given group of words.

Study of sound and sound waves

- Ans**
- 1. Botany
 - 2. Physics
 - 3. Demography
 - 4. Acoustics

Question ID : 264330152772
Option 1 ID : 264330598679
Option 2 ID : 264330598681
Option 3 ID : 264330598680
Option 4 ID : 264330598682
Status : Answered
Chosen Option : 4

Q.2 Select the most appropriate option to fill in the blank.
The students of class 7 gave their teacher a gift, which was _____ to her.

- Ans**
- 1. revealing
 - 2. shocking
 - 3. confusing
 - 4. surprising

Question ID : 264330152580
Option 1 ID : 264330597923
Option 2 ID : 264330597925
Option 3 ID : 264330597926
Option 4 ID : 264330597924
Status : Answered
Chosen Option : 4

Q.3 Select the most appropriate synonym of the given word.
Obsession

- Ans**
- 1. Discrimination
 - 2. Fascination
 - 3. Unconcern
 - 4. Sympathy

Question ID : 264330153559
Option 1 ID : 264330601736
Option 2 ID : 264330601737
Option 3 ID : 264330601735
Option 4 ID : 264330601738
Status : Answered
Chosen Option : 2

Q.4 The following sentence has been split into four segments. Identify the segment that contains a grammatical error and select the option which rectifies that error.

A lot of adulterants / are chemicals that can lead / to an range of health problems / in both children and adults.

- Ans**
- 1. to a range of health problems
 - 2. are chemical that can lead
 - 3. A lot of adulterant
 - 4. in both children and adult.

Question ID : 264330141340
Option 1 ID : 264330553696
Option 2 ID : 264330553695
Option 3 ID : 264330553697
Option 4 ID : 264330553698
Status : Answered
Chosen Option : 1

Q.5 Select the most appropriate option that can substitute the underlined segment in the given sentence.

They would find someone drive the wagon back across the desert.

- Ans**
- 1. in drive in the
 - 2. to drive
 - 3. to drive the
 - 4. in driving

Question ID : 264330153482
Option 1 ID : 264330601446
Option 2 ID : 264330601445
Option 3 ID : 264330601443
Option 4 ID : 264330601444
Status : Answered
Chosen Option : 3

Q.6 The following sentence has been split into four segments. Identify the segment that contains a grammatical error.
The ball / I kicked / went highly / in the sky.

- Ans**
- 1. The ball
 - 2. went highly
 - 3. in the sky
 - 4. I kicked

Question ID : 264330153184
Option 1 ID : 264330600295
Option 2 ID : 264330600297
Option 3 ID : 264330600298
Option 4 ID : 264330600296
Status : Answered
Chosen Option : 2

Q.7 Select the most appropriate idiom to fill in the blank.
Rajat is known for his notorious nature. He will be friendly to your face but likes _____.

- Ans**
- 1. to blow his trumpet
 - 2. to stab you in the back
 - 3. to paint the whole town red
 - 4. to get all bent out of the shape

Question ID : 264330153562
Option 1 ID : 264330601750
Option 2 ID : 264330601748
Option 3 ID : 264330601749
Option 4 ID : 264330601747
Status : Answered
Chosen Option : 2

Q.8 Select the most appropriate meaning of the given idiom.
Barking up the wrong tree

- Ans**
- 1. Provoke trouble
 - 2. To make a bad situation worse
 - 3. Getting a good start is important
 - 4. To be mistaken, to be looking for solutions in the wrong place

Question ID : 264330153280
Option 1 ID : 264330600677
Option 2 ID : 264330600676
Option 3 ID : 264330600678
Option 4 ID : 264330600675
Status : Answered
Chosen Option : 4

Q.9 Select the option that can be used as a one-word substitute for the given group of words.

A creature which depends on others

- Ans**
- 1. Microbes
 - 2. Virus
 - 3. Parasite
 - 4. Bacteria

Question ID : 264330152586
Option 1 ID : 264330597949
Option 2 ID : 264330597947
Option 3 ID : 264330597950
Option 4 ID : 264330597948
Status : Answered
Chosen Option : 3

Q.10 Select the most appropriate idiom to fill in the blank.
The play I saw last night was a _____.

- Ans**
- 1. hit the road
 - 2. hit the hay
 - 3. smash hit
 - 4. hit the roof

Question ID : 264330153099
Option 1 ID : 264330599962
Option 2 ID : 264330599959
Option 3 ID : 264330599960
Option 4 ID : 264330599961
Status : Answered
Chosen Option : 3

Q.11 Select the most appropriate option to fill in the blank.
He is _____ of many chain snatching cases in Dariyaganj.

- Ans**
- 1. ackused
 - 2. acxused
 - 3. akused
 - 4. accused

Question ID : 264330153306
Option 1 ID : 264330600781
Option 2 ID : 264330600780
Option 3 ID : 264330600779
Option 4 ID : 264330600782
Status : Answered
Chosen Option : 4

Q.12 The following sentence has been split into four segments. Identify the segment that contains a grammatical error.
Despite the setbacks and obstacles we faced, / our team rallied together and achieved our goals, / which teach us the importance of / teamwork, resilience, and determination.

- Ans**
- 1. Despite the setbacks and obstacles we faced,
 - 2. teamwork, resilience, and determination
 - 3. which teach us the importance of
 - 4. our team rallied together and achieved our goals,

Question ID : 264330144181
Option 1 ID : 264330564987
Option 2 ID : 264330564990
Option 3 ID : 264330564989
Option 4 ID : 264330564988
Status : Answered
Chosen Option : 3

Q.13 Select the option that correctly rectifies the spelling error that is underlined.
The questionaire used by the researcher was of top quality.

- Ans**
- 1. questionnaire
 - 2. questionaire
 - 3. questionairre
 - 4. questionaيرة

Question ID : 264330153422
Option 1 ID : 264330601219
Option 2 ID : 264330601220
Option 3 ID : 264330601221
Option 4 ID : 264330601222
Status : Answered
Chosen Option : 2

Q.14 The given sentence contains an error. Select the option that correctly rectifies the error.

That career competition was the difficultest exam he had ever given.

- Ans**
- 1. That career competition was the difficultest exam than any he had ever given.
 - 2. That career competition was the most difficult exam than any he had ever given.
 - 3. That career competition was the most difficultest exam he had ever given.
 - 4. That career competition was the most difficult exam he had ever given.

Question ID : 264330152607
Option 1 ID : 264330598034
Option 2 ID : 264330598032
Option 3 ID : 264330598031
Option 4 ID : 264330598033
Status : Answered
Chosen Option : 4

Q.15 Select the most appropriate idiom for the following sentence.
Shweta organises the sale of handmade pottery at a cheap rate.

- Ans**
- 1. Hush money
 - 2. Go for a song
 - 3. Having one's cake and eating it too
 - 4. Making a fuss out of something

Question ID : 264330141303
Option 1 ID : 264330553547
Option 2 ID : 264330553548
Option 3 ID : 264330553549
Option 4 ID : 264330553550
Status : Answered
Chosen Option : 2

Q.16 Select the most appropriate ANTONYM of the given word.
Guilty

- Ans**
- 1. Responsible
 - 2. Innocent
 - 3. Criminal
 - 4. Patient

Question ID : 264330153364
Option 1 ID : 264330601009
Option 2 ID : 264330601008
Option 3 ID : 264330601010
Option 4 ID : 264330601007
Status : Answered
Chosen Option : 2

Q.17 Identify the INCORRECTLY spelt word in the following sentence and select its correct spelling from the given options.
The colours of the rainbow seemed to shine through the triangular prism as the sun hit the object.

- Ans**
- 1. rainbouw
 - 2. son
 - 3. triangular
 - 4. object

Question ID : 264330153110
Option 1 ID : 264330600003
Option 2 ID : 264330600005
Option 3 ID : 264330600004
Option 4 ID : 264330600006
Status : Answered
Chosen Option : 3

Q.18 Select the most appropriate option that can substitute the underlined segment in the given sentence.

The intrepid group of adventurers climbed the mountain despite of bad weather and road closures.

- Ans 1. despite
 2. in spite
 3. in view of
 4. due to

Question ID : 264330151854
Option 1 ID : 264330595035
Option 2 ID : 264330595036
Option 3 ID : 264330595037
Option 4 ID : 264330595038
Status : Answered
Chosen Option : 1

Q.19 Select the most appropriate option that can substitute the underlined segment in the given sentence.

The airplane flowed over the mountains, offering the passengers a breath-taking view of the majestic peaks below.

- Ans 1. flew beyond
 2. flew over
 3. flowed above
 4. flowed beyond

Question ID : 264330151858
Option 1 ID : 264330595054
Option 2 ID : 264330595053
Option 3 ID : 264330595052
Option 4 ID : 264330595051
Status : Answered
Chosen Option : 2

Q.20 Select the most appropriate ANTONYM of the given word.
Ecstasy

- Ans 1. Euphoria
 2. Coarse
 3. Natural
 4. Despair

Question ID : 264330152676
Option 1 ID : 264330598307
Option 2 ID : 264330598309
Option 3 ID : 264330598308
Option 4 ID : 264330598310
Status : Answered
Chosen Option : 4

Comprehension:

In the following passage, some words have been deleted. Read the passage carefully and select the most appropriate option to fill in each blank.

As a boy, I was always exploring lonely places—neglected gardens and orchards, unoccupied houses, patches of scrub or wasteland, the fields outside the town, the fringes of the forest. On one of my rambles (1)_____ the bungalow, I pushed my way through a thicket of lantana bushes and stumbled over a thick stone slab, twisting my ankle slightly as I fell. For some time, I sat on the grass massaging my foot. When the pain eased, I looked more (2)_____ at the stone slab and was surprised to find that it was a gravestone. It was almost entirely covered by ivy; obviously no one had been near it for years. I tugged at the ivy and some of it came away in my hands. There was some (3)_____ lettering on the grave, half-observed by grass and moss. I could make out a name—Rose—but little more. I sat there for some time, (4)_____ over my discovery. I was wondering why 'Rose' should have been buried at so lonely a spot when there was a (5)_____ not far away.

SubQuestion No : 21

Q.21 Select the most appropriate option to fill in blank number 1.

- Ans** 1. before
 2. behind
 3. by dint of
 4. below

Question ID : 264330153544

Option 1 ID : 264330601676

Option 2 ID : 264330601678

Option 3 ID : 264330601677

Option 4 ID : 264330601675

Status : Answered

Chosen Option : 2

Comprehension:

In the following passage, some words have been deleted. Read the passage carefully and select the most appropriate option to fill in each blank.

As a boy, I was always exploring lonely places—neglected gardens and orchards, unoccupied houses, patches of scrub or wasteland, the fields outside the town, the fringes of the forest. On one of my rambles (1)_____ the bungalow, I pushed my way through a thicket of lantana bushes and stumbled over a thick stone slab, twisting my ankle slightly as I fell. For some time, I sat on the grass massaging my foot. When the pain eased, I looked more (2)_____ at the stone slab and was surprised to find that it was a gravestone. It was almost entirely covered by ivy; obviously no one had been near it for years. I tugged at the ivy and some of it came away in my hands. There was some (3)_____ lettering on the grave, half-observed by grass and moss. I could make out a name—Rose—but little more. I sat there for some time, (4)_____ over my discovery. I was wondering why 'Rose' should have been buried at so lonely a spot when there was a (5)_____ not far away.

SubQuestion No : 22

Q.22 Select the most appropriate option to fill in blank number 2.

- Ans** 1. closely
 2. emptily
 3. frankly
 4. lawfully

Question ID : 264330153545

Option 1 ID : 264330601681

Option 2 ID : 264330601679

Option 3 ID : 264330601680

Option 4 ID : 264330601682

Status : Answered

Chosen Option : 1

Comprehension:

In the following passage, some words have been deleted. Read the passage carefully and select the most appropriate option to fill in each blank.

As a boy, I was always exploring lonely places—neglected gardens and orchards, unoccupied houses, patches of scrub or wasteland, the fields outside the town, the fringes of the forest. On one of my rambles (1)_____ the bungalow, I pushed my way through a thicket of lantana bushes and stumbled over a thick stone slab, twisting my ankle slightly as I fell. For some time, I sat on the grass massaging my foot. When the pain eased, I looked more (2)_____ at the stone slab and was surprised to find that it was a gravestone. It was almost entirely covered by ivy; obviously no one had been near it for years. I tugged at the ivy and some of it came away in my hands. There was some (3)_____ lettering on the grave, half-observed by grass and moss. I could make out a name—Rose—but little more. I sat there for some time, (4)_____ over my discovery. I was wondering why 'Rose' should have been buried at so lonely a spot when there was a (5)_____ not far away.

SubQuestion No : 23

Q.23 Select the most appropriate option to fill in blank number 3.

- Ans**
- 1. idiotic
 - 2. sturdy
 - 3. blurred
 - 4. nomadic

Question ID : 264330153546

Option 1 ID : 264330601686

Option 2 ID : 264330601683

Option 3 ID : 264330601684

Option 4 ID : 264330601685

Status : Answered

Chosen Option : 3

Comprehension:

In the following passage, some words have been deleted. Read the passage carefully and select the most appropriate option to fill in each blank.

As a boy, I was always exploring lonely places—neglected gardens and orchards, unoccupied houses, patches of scrub or wasteland, the fields outside the town, the fringes of the forest. On one of my rambles (1)_____ the bungalow, I pushed my way through a thicket of lantana bushes and stumbled over a thick stone slab, twisting my ankle slightly as I fell. For some time, I sat on the grass massaging my foot. When the pain eased, I looked more (2)_____ at the stone slab and was surprised to find that it was a gravestone. It was almost entirely covered by ivy; obviously no one had been near it for years. I tugged at the ivy and some of it came away in my hands. There was some (3)_____ lettering on the grave, half-observed by grass and moss. I could make out a name—Rose—but little more. I sat there for some time, (4)_____ over my discovery. I was wondering why 'Rose' should have been buried at so lonely a spot when there was a (5)_____ not far away.

SubQuestion No : 24

Q.24 Select the most appropriate option to fill in blank number 4.

- Ans**
- 1. sleeping
 - 2. pondering
 - 3. being
 - 4. pulling

Question ID : 264330153547

Option 1 ID : 264330601690

Option 2 ID : 264330601687

Option 3 ID : 264330601688

Option 4 ID : 264330601689

Status : Answered

Chosen Option : 2

Comprehension:

In the following passage, some words have been deleted. Read the passage carefully and select the most appropriate option to fill in each blank.

As a boy, I was always exploring lonely places—neglected gardens and orchards, unoccupied houses, patches of scrub or wasteland, the fields outside the town, the fringes of the forest. On one of my rambles (1)_____ the bungalow, I pushed my way through a thicket of lantana bushes and stumbled over a thick stone slab, twisting my ankle slightly as I fell. For some time, I sat on the grass massaging my foot. When the pain eased, I looked more (2)_____ at the stone slab and was surprised to find that it was a gravestone. It was almost entirely covered by ivy; obviously no one had been near it for years. I tugged at the ivy and some of it came away in my hands. There was some (3)_____ lettering on the grave, half-obsured by grass and moss. I could make out a name—Rose—but little more. I sat there for some time, (4)_____ over my discovery. I was wondering why 'Rose' should have been buried at so lonely a spot when there was a (5)_____ not far away.

SubQuestion No : 25

Q.25 Select the most appropriate option to fill in blank number 5.

- Ans**
- 1. dormitory
 - 2. kennel
 - 3. sanctuary
 - 4. cemetery

Question ID : 264330153548

Option 1 ID : 264330601694

Option 2 ID : 264330601691

Option 3 ID : 264330601692

Option 4 ID : 264330601693

Status : Answered

Chosen Option : 4