

SSC MTS 2023 Tier 1 Sept 5 Shift 3 Question Paper with Answers

Roll Number	
Candidate Name	
Exam Date	05/09/2023
Exam Time	4:00 PM - 6:00 PM
Subject	MTS Non Tech Havaladar CBIC and CBN Examination 2023

Section : Numerical and Mathematical Ability

Q.1 In how many years will a sum of ₹18,000 at 20% per annum compounded half yearly becomes ₹23,958?

- Ans**
1. $1\frac{1}{2}$
2. $3\frac{1}{2}$
3. $1\frac{1}{4}$
4. $2\frac{1}{2}$

Question ID : 264330154089

Option 1 ID : 264330603820

Option 2 ID : 264330603821

Option 3 ID : 264330603822

Option 4 ID : 264330603819

Status : Answered

Chosen Option : 1

Q.2 Rashmi and Tina can do a piece of work in 20 and 30 days, respectively. If they work at it on alternate days with Rashmi beginning, then, in how many days will the work be over?

- Ans**
1. 28
2. 26
3. 24
4. 12

Question ID : 264330156119

Option 1 ID : 264330611878

Option 2 ID : 264330611877

Option 3 ID : 264330611876

Option 4 ID : 264330611875

Status : Answered

Chosen Option : 3

Q.3 A swimmer swims downstream from point A to point B in 4 hours. It covers the same distance upstream in 5 hours. If the speed of the stream is 2 km/h. what is the distance between A and B:

- Ans**
- 1. 80 km
 - 2. 72 km
 - 3. 60 km
 - 4. 100 km

Question ID : 264330154058

Option 1 ID : 264330603697

Option 2 ID : 264330603698

Option 3 ID : 264330603695

Option 4 ID : 264330603696

Status : Answered

Chosen Option : 1

Q.4 The average of the two numbers is 48. If 3 is added to a smaller number, then the ratio between them is 11 : 20. Find the larger number. (Round up to two decimal places).

- Ans**
- 1. 40.87
 - 2. 3.87
 - 3. 63.87
 - 4. 70.87

Question ID : 264330156343

Option 1 ID : 264330612771

Option 2 ID : 264330612773

Option 3 ID : 264330612772

Option 4 ID : 264330612774

Status : Answered

Chosen Option : 3

Q.5 In a group of people, 70% are men and 30% are women. The average age of the men is 50 years and that of the women is 40 years. Find the average age of all the members in the group (in years).

- Ans**
- 1. 48
 - 2. 47
 - 3. 46
 - 4. 45

Question ID : 264330153835

Option 1 ID : 264330602804

Option 2 ID : 264330602805

Option 3 ID : 264330602803

Option 4 ID : 264330602806

Status : Answered

Chosen Option : 2

Q.6 Simplify: $\frac{1}{3} \div \frac{1}{3} \times \frac{1}{3} = ?$
 $\frac{1}{3} + \frac{1}{3} - \frac{1}{3} = ?$

- Ans
- 1. 3
 - 2. $\frac{1}{9}$
 - 3. 1
 - 4. $\frac{1}{3}$

Question ID : 264330154040
Option 1 ID : 264330603625
Option 2 ID : 264330603626
Option 3 ID : 264330603624
Option 4 ID : 264330603623
Status : Answered
Chosen Option : 3

Q.7 A man and a boy can do a piece of work in 12 days. If the man works alone for the last 3 days, it is completed in 13 days. How long would the boy take to do it alone?

- Ans
- 1. 36 days
 - 2. 18 days
 - 3. 72 days
 - 4. 30 days

Question ID : 264330156194
Option 1 ID : 264330612176
Option 2 ID : 264330612178
Option 3 ID : 264330612175
Option 4 ID : 264330612177
Status : Answered
Chosen Option : 1

Q.8 A sum of money becomes seven times in 16 years at simple interest per annum. Find the per annum rate of interest.

- Ans
- 1. 25.8%
 - 2. 39.2%
 - 3. 20.3%
 - 4. 37.5%

Question ID : 264330155746
Option 1 ID : 264330610388
Option 2 ID : 264330610390
Option 3 ID : 264330610387
Option 4 ID : 264330610389
Status : Answered
Chosen Option : 4

Q.9 A train covers a certain distance with a speed of 72 km/h in the first two hours of its journey and 120 km in the next 1.5 hours. What is its average speed (in km/h, rounded off to the nearest integer) for the entire journey?

- Ans**
- 1. 75
 - 2. 78
 - 3. 73
 - 4. 79

Question ID : 264330156471

Option 1 ID : 264330613274

Option 2 ID : 264330613272

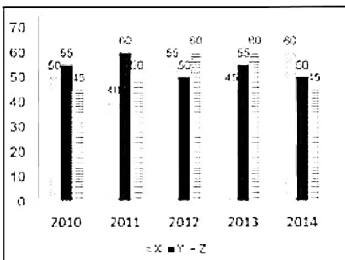
Option 3 ID : 264330613273

Option 4 ID : 264330613271

Status : Answered

Chosen Option : 3

Q.10 The graph shows the production of tyres (in Lakhs) by three different companies X, Y, and Z over the years. Directions: Study the following graph carefully to answer the question given below it.



What is the percentage increase in production of company X from 2011 to 2012?

- Ans**
- 1. 37.5%
 - 2. 32.5%
 - 3. 38.25%
 - 4. 35%

Question ID : 264330153889

Option 1 ID : 264330603021

Option 2 ID : 264330603022

Option 3 ID : 264330603019

Option 4 ID : 264330603020

Status : Answered

Chosen Option : 1

Q.11 By selling 8 items, a shopkeeper gains the selling price of 2 items. The gain percentage of the shopkeeper is:

- Ans**
- 1. 25%
 - 2. $16\frac{2}{3}\%$
 - 3. $33\frac{1}{3}\%$
 - 4. 30%

Question ID : 264330161981

Option 1 ID : 264330635254

Option 2 ID : 264330635253

Option 3 ID : 264330635252

Option 4 ID : 264330635251

Status : Answered

Chosen Option : 3

Q.12 Zeenat earns 20% on an investment, but she loses 10% on another investment. If the two investments are respectively in the ratio of 3 : 5, then what is the percentage gain or loss for Zeenat on the two investments taken together?

- Ans**
- 1. 1.25% Gain
 - 2. 2.25% Loss
 - 3. 1.25% Loss
 - 4. 2.25% Gain

Question ID : 264330155705
Option 1 ID : 264330610224
Option 2 ID : 264330610225
Option 3 ID : 264330610223
Option 4 ID : 264330610226
Status : Answered
Chosen Option : 1

Q.13 Find the arithmetic mean of 28, 21, 39, 33, 36, 23.

- Ans**
- 1. 30
 - 2. 32
 - 3. 26
 - 4. 28

Question ID : 264330155953
Option 1 ID : 264330611211
Option 2 ID : 264330611213
Option 3 ID : 264330611214
Option 4 ID : 264330611212
Status : Answered
Chosen Option : 1

Q.14 An athlete crosses a 3000-m distance in 10 minutes. What is his speed (in km/h)?

- Ans**
- 1. 16
 - 2. 12
 - 3. 14
 - 4. 18

Question ID : 264330156231
Option 1 ID : 264330612325
Option 2 ID : 264330612323
Option 3 ID : 264330612324
Option 4 ID : 264330612326
Status : Answered
Chosen Option : 4

Q.15 The diameter of the base of a right circular cylinder is 36 cm and its height is 21 cm. Find the volume of the cylinder.

(Take $\pi = \frac{22}{7}$)

- Ans**
- 1. 2376 cm³
 - 2. 85536 cm³
 - 3. 21384 cm³
 - 4. 5346 cm³

Question ID : 264330156437
Option 1 ID : 264330613141
Option 2 ID : 264330613139
Option 3 ID : 264330613142
Option 4 ID : 264330613140
Status : Answered
Chosen Option : 3

Q.16 Rupees 66,000 is to be divided amongst Asha, Bhupinder and Gargi in such a way that the ratio of their shares is to be: Asha : Bhupinder = 9 : 5 and Bhupinder : Gargi = 2 : 1. How much should Asha get?

- Ans**
- 1. ₹38,000
 - 2. ₹36,000
 - 3. ₹32,000
 - 4. ₹34,000

Question ID : 264330154124
Option 1 ID : 264330603962
Option 2 ID : 264330603961
Option 3 ID : 264330603959
Option 4 ID : 264330603960
Status : Answered
Chosen Option : 2

Q.17 Three numbers are in the ratio 3 : 5 : 7. If their LCM is 2625, find their HCF.

- Ans**
- 1. 100
 - 2. 125
 - 3. 50
 - 4. 25

Question ID : 264330155986
Option 1 ID : 264330611345
Option 2 ID : 264330611346
Option 3 ID : 264330611343
Option 4 ID : 264330611344
Status : Answered
Chosen Option : 4

Q.18 The table below shows the marks obtained by students A, B and C in French and Geography in an examination. The maximum marks for each subject are 100. Study the table carefully and answer the question that follows.

Student	French	Geography
A	98	100
B	89	98
C	92	99

What is the ratio of the average marks of the three students in Geography to that in French?

- Ans**
- 1. 32 : 28
 - 2. 28 : 32
 - 3. 33 : 31
 - 4. 31 : 33

Question ID : 264330156497
Option 1 ID : 264330613375
Option 2 ID : 264330613376
Option 3 ID : 264330613377
Option 4 ID : 264330613378
Status : Answered
Chosen Option : 3

Q.19 A contractor reduces the working time of a week (Monday to Saturday) from 48 hours to 36 hours for his workers without changing the payment. What is the percentage increase in the hourly rate?

- Ans**
- 1. $30\frac{1}{3}\%$
 - 2. $33\frac{1}{3}\%$
 - 3. $67\frac{2}{3}\%$
 - 4. $70\frac{2}{3}\%$

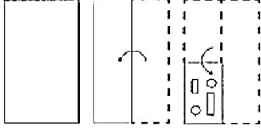
Question ID : 264330156473
Option 1 ID : 264330613281
Option 2 ID : 264330613279
Option 3 ID : 264330613280
Option 4 ID : 264330613282
Status : Answered
Chosen Option : 2

Q.20 The length of the median of an equilateral triangle is $6\sqrt{3}$ cm. The area of the triangle is:

- Ans**
- 1. $36\sqrt{3}$ cm²
 - 2. 36 cm²
 - 3. 72 cm²
 - 4. $72\sqrt{3}$ cm²

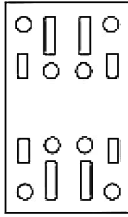
Question ID : 264330156500
Option 1 ID : 264330613389
Option 2 ID : 264330613388
Option 3 ID : 264330613390
Option 4 ID : 264330613387
Status : Answered
Chosen Option : 1

Q.1 The sequence of folding a piece of paper and the manner in which the folded paper is cut is shown in the following figures. How would this paper look when unfolded?

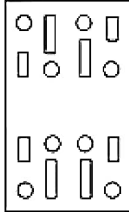


Ans

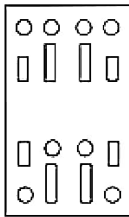
✓ 1.



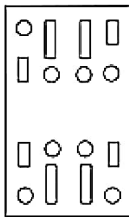
✗ 2.



✗ 3.



✗ 4.



Question ID : 264330155608

Option 1 ID : 264330609837

Option 2 ID : 264330609838

Option 3 ID : 264330609835

Option 4 ID : 264330609836

Status : Answered

Chosen Option : 1

Q.2 21 is related to 147 following a certain logic. Following the same logic, 32 is related to 224. To which of the following is 52 related to, following the same logic?

Ans ✗ 1. 356

✓ 2. 364

✗ 3. 365

✗ 4. 346

Question ID : 264330151590

Option 1 ID : 264330593990

Option 2 ID : 264330593987

Option 3 ID : 264330593988

Option 4 ID : 264330593989

Status : Answered

Chosen Option : 2

Q.3 Find out the correct alternative that when filled in the blanks in the same sequence will make the series logically complete.

LV_J_VFJ_I_GJ_XVH_BV_J

- Ans**
- ✓ 1. EPVJI
 - ✗ 2. DVJLE
 - ✗ 3. DBRPE
 - ✗ 4. EJBLR

Question ID : 264330154725

Option 1 ID : 264330606363

Option 2 ID : 264330606365

Option 3 ID : 264330606366

Option 4 ID : 264330606364

Status : Answered

Chosen Option : 1

Q.4 Select the combination of letters that when sequentially placed in the blanks of the given series, will complete the series.

_GGHG__GG_G_

- Ans**
- ✓ 1. HGHHG
 - ✗ 2. GHHGH
 - ✗ 3. HGGHH
 - ✗ 4. HHHGH

Question ID : 264330151640

Option 1 ID : 264330594189

Option 2 ID : 264330594190

Option 3 ID : 264330594187

Option 4 ID : 264330594188

Status : Answered

Chosen Option : 1

Q.5 उस शब्द-युग्म का चयन कीजिए जो नीचे दिए गए शब्दों के युग्म में व्यक्त किए गए समान संबंध का सबसे अच्छा निरूपण करता है।

(शब्दों को अर्थपूर्ण हिंदी शब्दों के रूप में माना जाना चाहिए और उन्हें शब्द में अक्षरों की संख्या/व्यंजन/स्वरों की संख्या के आधार पर एक दूसरे से संबंधित नहीं किया जाना चाहिए।)

हकलाना : बातचीत

- Ans**
- ✓ 1. दृष्टिवैषम्य : दृष्टि
 - ✗ 2. शोर मचाना : सुनना
 - ✗ 3. सुगंध : महक
 - ✗ 4. नोवोकेन : स्पर्श

Question ID : 264330154634

Option 1 ID : 264330606001

Option 2 ID : 264330605999

Option 3 ID : 264330606000

Option 4 ID : 264330606002

Status : Answered

Chosen Option : 1

Q.6 What should come in place of the question mark (?) in the given series based on the English alphabetical order?

FQA, HTE, JWI, LZM, ?

- Ans
- 1. ODR
 - 2. NCQ
 - 3. MDP
 - 4. OEP

Question ID : 264330156296

Option 1 ID : 264330612584

Option 2 ID : 264330612586

Option 3 ID : 264330612583

Option 4 ID : 264330612585

Status : Answered

Chosen Option : 2

Q.7 Which figure should replace the question mark (?) if the following figure series were to be continued?

C	P	A	X	↑	P	P	A	X	C	▷	A	
	▷			C			↑			P		?
X		↑	▷		A	C		▷	↑		X	

Ans

1.

A	P	C
	▷	
X		↑

2.

A	P	X
	▷	
C		↑

3.

A	X	P
	C	
▷		↑

4.

A	X	C
	▷	
P		↑

Question ID : 264330154753

Option 1 ID : 264330606475

Option 2 ID : 264330606477

Option 3 ID : 264330606478

Option 4 ID : 264330606476

Status : Answered

Chosen Option : 4

Q.8 In a certain code language, 'CHEW' is coded as '39' and 'FORE' is coded as '44'. What is the code for 'GLIT' in the given code language?

- Ans** ✓ 1. 48
✗ 2. 51
✗ 3. 50
✗ 4. 52

Question ID : 264330155834
Option 1 ID : 264330610740
Option 2 ID : 264330610741
Option 3 ID : 264330610739
Option 4 ID : 264330610742
Status : Answered
Chosen Option : 1

Q.9 What will come in the place of '?' in the following equation, if '+' and '-' are interchanged and '×' and '÷' are interchanged?
 $92 + 18 \div 2 - 125 \times 25 = ?$

- Ans** ✓ 1. 61
✗ 2. 41
✗ 3. 51
✗ 4. 71

Question ID : 264330155671
Option 1 ID : 264330610087
Option 2 ID : 264330610089
Option 3 ID : 264330610088
Option 4 ID : 264330610090
Status : Answered
Chosen Option : 1

Q.10 What should come in place of '?' in the given series?

22 24 28 36 52 ?

- Ans** ✓ 1. 84
✗ 2. 88
✗ 3. 90
✗ 4. 72

Question ID : 264330151453
Option 1 ID : 264330593440
Option 2 ID : 264330593441
Option 3 ID : 264330593442
Option 4 ID : 264330593439
Status : Answered
Chosen Option : 1

Q.11 Select the correct mirror image of the given figure when the mirror is placed at MN as shown below.



- Ans
- 1. a m 9 z 3 d F
 - 2. a m 9 z 3 b F
 - 3. a m 9 z 3 d F
 - 4. a m 9 z 3 b F

Question ID : 264330151516

Option 1 ID : 264330593693

Option 2 ID : 264330593694

Option 3 ID : 264330593692

Option 4 ID : 264330593691

Status : Answered

Chosen Option : 4

Q.12 What will come in the place of the question mark (?) in the following equation, if '+' and '-' are interchanged and 'x' and '÷' are interchanged?

$$93 \div 5 + 4 - 45 \times 5 = ?$$

- Ans
- 1. 490
 - 2. 470
 - 3. 495
 - 4. 480

Question ID : 264330154613

Option 1 ID : 264330605917

Option 2 ID : 264330605915

Option 3 ID : 264330605918

Option 4 ID : 264330605916

Status : Answered

Chosen Option : 2

Q.13 In a certain code language, 'OPEN' is coded as '4582' and 'PORE' is coded as '2385'. What is the code for 'R' in the given code language?

- Ans
- 1. 8
 - 2. 2
 - 3. 3
 - 4. 5

Question ID : 264330151700

Option 1 ID : 264330594430

Option 2 ID : 264330594428

Option 3 ID : 264330594429

Option 4 ID : 264330594427

Status : Answered

Chosen Option : 3

Q.14 What should come in place of '?' in the given series?

6 25 82 253 766 ?

- Ans
- 1. 2569
 - 2. 2491
 - 3. 2485
 - 4. 2305

Question ID : 264330151473

Option 1 ID : 264330593522

Option 2 ID : 264330593521

Option 3 ID : 264330593520

Option 4 ID : 264330593519

Status : Answered

Chosen Option : 4

Q.15 Six people, C, D, E, F, G and H are sitting in a straight line, facing north. Only three people sit to the right of G. Only two people sit between G and E. C sits to the immediate right of F and to the immediate left of H. H is not the immediate neighbour of E.

Who are sitting between G and E?

- Ans
- 1. F and C
 - 2. C and D
 - 3. H and E
 - 4. H and D

Question ID : 264330155544

Option 1 ID : 264330609579

Option 2 ID : 264330609582

Option 3 ID : 264330609581

Option 4 ID : 264330609580

Status : Answered

Chosen Option : 4

Q.16 In the following number-pairs, the second number is obtained by applying certain mathematical operations to the first number. Select the set in which the numbers are related in the same way as are the numbers of the following sets.

(NOTE: Operations should be performed on the whole numbers, without breaking down the numbers into its constituent digits. E.g. 13 – Operations on 13 such as adding / subtracting / multiplying etc. to 13 can be performed.

Breaking down 13 into 1 and 3 and then performing mathematical operations on 1 and 3 is not allowed)

11, 110

19, 190

- Ans
- 1. 31, 310
 - 2. 22, 440
 - 3. 91, 190
 - 4. 51, 150

Question ID : 264330151618

Option 1 ID : 264330594099

Option 2 ID : 264330594101

Option 3 ID : 264330594102

Option 4 ID : 264330594100

Status : Answered

Chosen Option : 1

Q.17 Read the given statements and conclusions carefully. You have to take the given statements to be true even if they seem to be at variance from commonly known facts. You have to decide which conclusion/s logically follow/s from the given statements.

Statements: Some sofas are teapots. All teapots are printers. Some printers are vases.

Conclusion I: Some teapots are sofas.

Conclusion II: Some vases are printers.

- Ans**
- 1. Neither conclusion (I) nor (II) is follow.
 - 2. Only conclusion (II) is follow.
 - 3. Both conclusions (I) and (II) are follow.
 - 4. Only conclusion (I) is follow.

Question ID : 264330155903

Option 1 ID : 264330611017

Option 2 ID : 264330611016

Option 3 ID : 264330611018

Option 4 ID : 264330611015

Status : Answered

Chosen Option : 3

Q.18 The position of how many letters will remain unchanged if each of the letter in the word 'TIMES' is arranged in alphabetical order?

- Ans**
- 1. Two
 - 2. None
 - 3. Four
 - 4. One

Question ID : 264330154325

Option 1 ID : 264330604764

Option 2 ID : 264330604763

Option 3 ID : 264330604765

Option 4 ID : 264330604766

Status : Answered

Chosen Option : 1

Q.19 What should come in place of '?' in the given series?

5 8 17 44 125 ?

- Ans**
- 1. 391
 - 2. 312
 - 3. 368
 - 4. 283

Question ID : 264330151485

Option 1 ID : 264330593570

Option 2 ID : 264330593567

Option 3 ID : 264330593568

Option 4 ID : 264330593569

Status : Answered

Chosen Option : 3

Q.20 Read the given statements and conclusions carefully. You have to take the given statements to be true even if they seem to be at variance from commonly known facts. You have to decide which conclusion's logically follow/s from the given statements.

Statements: All blenders are microwaves. Some microwaves are toasters. All toasters are lamps.

Conclusion I: Some blenders are microwaves.

Conclusion II: All toasters are blenders.

- Ans**
- 1. Only conclusion (II) is follow.
 - 2. Both conclusions (I) and (II) are follow.
 - 3. Neither conclusion (I) nor (II) is follow.
 - 4. Only conclusion (I) is follow.

Question ID : 264330155911

Option 1 ID : 264330611048

Option 2 ID : 264330611050

Option 3 ID : 264330611049

Option 4 ID : 264330611047

Status : Answered

Chosen Option : 4

Section : General Awareness

Q.1 How many elements are listed in the modern periodic table?

- Ans**
- 1. 107
 - 2. 81
 - 3. 91
 - 4. 118

Question ID : 264330161331

Option 1 ID : 264330632652

Option 2 ID : 264330632654

Option 3 ID : 264330632653

Option 4 ID : 264330632651

Status : Answered

Chosen Option : 4

Q.2 In which of the following States was the third edition of Khelo India University Games held?

- Ans**
- 1. Jharkhand
 - 2. Uttar Pradesh
 - 3. New Delhi
 - 4. Punjab

Question ID : 264330161146

Option 1 ID : 264330631916

Option 2 ID : 264330631918

Option 3 ID : 264330631917

Option 4 ID : 264330631915

Status : Answered

Chosen Option : 2

Q.3 Which country did India beat in the final to win the 2023 Intercontinental Cup Football championship?

- Ans
- 1. Thailand
 - 2. Lebanon
 - 3. Mongolia
 - 4. Vanuatu

Question ID : 264330161139
Option 1 ID : 264330631890
Option 2 ID : 264330631887
Option 3 ID : 264330631889
Option 4 ID : 264330631888
Status : Answered
Chosen Option : 2

Q.4 In which state of India is shifting cultivation known as Bringa?

- Ans
- 1. Andhra Pradesh
 - 2. Manipur
 - 3. Odisha
 - 4. Madhya Pradesh

Question ID : 264330160137
Option 1 ID : 264330627890
Option 2 ID : 264330627889
Option 3 ID : 264330627887
Option 4 ID : 264330627888
Status : Marked For Review
Chosen Option : 3

Q.5 What does the acronym 'ATM' stand for?

- Ans
- 1. Automated Teller Machine
 - 2. Automated Transaction Management
 - 3. Account Tracking Module
 - 4. All-Time Money

Question ID : 264330157302
Option 1 ID : 264330616571
Option 2 ID : 264330616572
Option 3 ID : 264330616574
Option 4 ID : 264330616573
Status : Answered
Chosen Option : 1

Q.6 Who had founded the first Women's University in India?

- Ans
- 1. Dhondo Keshav Karve
 - 2. Ashutosh Mukherjee
 - 3. William Hunter
 - 4. Sayed Ahmed Khan

Question ID : 264330162336
Option 1 ID : 264330636671
Option 2 ID : 264330636672
Option 3 ID : 264330636674
Option 4 ID : 264330636673
Status : Answered
Chosen Option : 3

Q.7 Devendra Jhajharia won which medal/place in World Para Athletics Grand Prix?

- Ans 1. Bronze
 2. Gold
 3. Silver
 4. Fourth

Question ID : 264330158364
Option 1 ID : 264330620817
Option 2 ID : 264330620815
Option 3 ID : 264330620816
Option 4 ID : 264330620818
Status : Answered
Chosen Option : 2

Q.8 In the process of cell division, the formation of phragmoplast between the two daughter nuclei occurs during:

- Ans 1. the G₀ phase
 2. the cytokinesis
 3. the S phase
 4. the karyokinesis

Question ID : 264330156617
Option 1 ID : 264330613858
Option 2 ID : 264330613855
Option 3 ID : 264330613857
Option 4 ID : 264330613856
Status : Answered
Chosen Option : 4

Q.9 In which type of forests are Mahogany, Rosewood and Cinchona trees found in India?

- Ans 1. Tropical Evergreen forests
 2. Tropical Deciduous forests
 3. Mangrove forests
 4. Montane forests

Question ID : 264330160149
Option 1 ID : 264330627937
Option 2 ID : 264330627935
Option 3 ID : 264330627936
Option 4 ID : 264330627938
Status : Answered
Chosen Option : 1

Q.10 Lebang Boomani dance is the harvest dance of _____.

- Ans 1. Mizoram
 2. Tripura
 3. Assam
 4. Meghalaya

Question ID : 264330159062
Option 1 ID : 264330623607
Option 2 ID : 264330623610
Option 3 ID : 264330623609
Option 4 ID : 264330623608
Status : Answered
Chosen Option : 4

Q.11 राष्ट्रीय आय लेखांकन में अंतिम और मध्यवर्ती वस्तुओं/सेवाओं के बीच अंतर करना क्या महत्वपूर्ण है?

- Ans 1. यह उपभोक्ता की प्राथमिकताओं और बाजार की मांग में बदलाव को ट्रैक करने में मदद करता है।
 2. यह आर्थिक विकास और उत्पादकता की अधिक सटीक माप करने में सहायता करता है।
 3. विभिन्न क्षेत्रों के बीच आय के वितरण में अंतर्दृष्टि प्रदान करता है।
 4. यह उत्पादित वस्तुओं और सेवाओं की समग्र गुणवत्ता निर्धारित करने में मदद करता है।

Question ID : 264330157314

Option 1 ID : 264330616622

Option 2 ID : 264330616620

Option 3 ID : 264330616621

Option 4 ID : 264330616619

Status : Answered

Chosen Option : 2

Q.12 Which of the following is NOT a directive principle of state policy?

- Ans 1. Separation of the judiciary from executive
 2. Reside in any part of India
 3. Uniform civil code
 4. Protection of monuments

Question ID : 264330159907

Option 1 ID : 264330626978

Option 2 ID : 264330626977

Option 3 ID : 264330626975

Option 4 ID : 264330626976

Status : Answered

Chosen Option : 2

Q.13 In which state is the Sanchi Stupa situated?

- Ans 1. Bihar
 2. Uttar Pradesh
 3. Gujarat
 4. Madhya Pradesh

Question ID : 264330160759

Option 1 ID : 264330630370

Option 2 ID : 264330630369

Option 3 ID : 264330630367

Option 4 ID : 264330630368

Status : Answered

Chosen Option : 4

Q.14 भारत का नाममात्र कार्यकारी प्राधिकारी (nominal executive authority) कौन है?

- Ans 1. उपराष्ट्रपति
 2. महान्यायवादी
 3. राष्ट्रपति
 4. प्रधानमंत्री

Question ID : 264330159910

Option 1 ID : 264330626990

Option 2 ID : 264330626989

Option 3 ID : 264330626988

Option 4 ID : 264330626987

Status : Answered

Chosen Option : 3

Q.15 Who among the following is the author of the book, 'Unfinished: A Memoir'?

- Ans 1. Alia Bhatt
 2. Priyanka Chopra
 3. Deepika Padukone
 4. Kareena Kapoor

Question ID : 264330161907
Option 1 ID : 264330634956
Option 2 ID : 264330634957
Option 3 ID : 264330634955
Option 4 ID : 264330634958
Status : Answered
Chosen Option : 2

Q.16 The South China Sea is a part of which of the following oceans?

- Ans 1. Arctic Ocean
 2. Pacific Ocean
 3. Southern Ocean
 4. Indian Ocean

Question ID : 264330157835
Option 1 ID : 264330618700
Option 2 ID : 264330618702
Option 3 ID : 264330618701
Option 4 ID : 264330618699
Status : Answered
Chosen Option : 1

Q.17 The official language of which neighbouring country of India is 'Dhivehi'?

- Ans 1. Maldives
 2. Sri Lanka
 3. Bhutan
 4. China

Question ID : 264330160174
Option 1 ID : 264330628038
Option 2 ID : 264330628036
Option 3 ID : 264330628037
Option 4 ID : 264330628035
Status : Answered
Chosen Option : 1

Q.18 Under which scheme of Airport Authority of India did the Jammu and Kashmir Lieutenant Governor inaugurate UMEED Market Place at Srinagar international airport for supporting local art and artisans of Self Help Groups of J&K Rural Livelihood Mission?

- Ans
- 1. AVSAR Scheme
 - 2. AKASH Scheme
 - 3. AAKAR Scheme
 - 4. ASAR Scheme

Question ID : 264330161408
Option 1 ID : 264330632960
Option 2 ID : 264330632961
Option 3 ID : 264330632962
Option 4 ID : 264330632959
Status : Answered
Chosen Option : 1

Q.19 Who was the Iranian ruler who attacked the city of Delhi and took away an immense amount of wealth in 1739?

- Ans
- 1. Ahmad Shah Qajar
 - 2. Nadir Shah
 - 3. Ahmad Shah Abdali
 - 4. Abbas I

Question ID : 264330161735
Option 1 ID : 264330634268
Option 2 ID : 264330634269
Option 3 ID : 264330634267
Option 4 ID : 264330634270
Status : Answered
Chosen Option : 3

Q.20 Pandit Bhimsen Joshi belonged to the _____ Gharana.

- Ans
- 1. Banaras
 - 2. Kirana
 - 3. Agra
 - 4. Dilli

Question ID : 264330155463
Option 1 ID : 264330609258
Option 2 ID : 264330609257
Option 3 ID : 264330609256
Option 4 ID : 264330609255
Status : Answered
Chosen Option : 1

Q.21 Mahari Dance and Gotipua Dance belongs to which of the following states?

- Ans 1. Odisha
 2. Haryana
 3. Uttar Pradesh
 4. Bihar

Question ID : 264330159060
Option 1 ID : 264330623599
Option 2 ID : 264330623600
Option 3 ID : 264330623601
Option 4 ID : 264330623602
Status : Answered
Chosen Option : 1

Q.22 Identify the WRONG pair of dancer and the related dance form from the following.

- Ans 1. Meenakshi Chitharanjan - Bharatanatyam
 2. Kumkum Dhar - Kuchipudi
 3. Sruti Bandopadhyay - Manipuri
 4. Trilochan Mohanta - Chhau

Question ID : 264330155529
Option 1 ID : 264330609519
Option 2 ID : 264330609520
Option 3 ID : 264330609521
Option 4 ID : 264330609522
Status : Answered
Chosen Option : 4

Q.23 Which of the following musicians is popularly known as 'Pancharamda'?

- Ans 1. Ravi
 2. Khayam
 3. Naushad
 4. RD Burman

Question ID : 264330160974
Option 1 ID : 264330631228
Option 2 ID : 264330631229
Option 3 ID : 264330631230
Option 4 ID : 264330631227
Status : Answered
Chosen Option : 4

Q.24 The 'Mukteshwar' dance festival is held from 14th to 16th January at the Mukteshwar temple in the state of _____.

- Ans 1. Uttarakhand
 2. Odisha
 3. Madhya Pradesh
 4. Himachal Pradesh

Question ID : 264330160839
Option 1 ID : 264330630687
Option 2 ID : 264330630689
Option 3 ID : 264330630690
Option 4 ID : 264330630688
Status : Answered
Chosen Option : 1

Q.25 Select from among the given options the autobiography of Milkha Singh.

- Ans
- 1. A Shot at History
 - 2. The Race of My Life
 - 3. The Test of My Life
 - 4. One Life Is Not Enough

Question ID : 264330155493

Option 1 ID : 264330609375

Option 2 ID : 264330609376

Option 3 ID : 264330609377

Option 4 ID : 264330609378

Status : Answered

Chosen Option : 4

Section : English Language and Comprehension

Q.1 Parts of the following sentence have been underlined and given as options. Select the option that contains an error.

For an all-too-brief period between the late 1980s and the late 2000s, a world was characterised by convergence.

- Ans
- 1. between the late
 - 2. For an all-too-brief
 - 3. characterised by
 - 4. a world was

Question ID : 264330153194

Option 1 ID : 264330600337

Option 2 ID : 264330600335

Option 3 ID : 264330600338

Option 4 ID : 264330600336

Status : Answered

Chosen Option : 4

Q.2 The sentence given below has spelling errors. Select the sentence without spelling errors.

Let us appreciate, support and contribute our might to the promotional efforts of the community in this direction.

- Ans
- 1. Let us appreciate, support and contribute our might to the promotional efforts of the community in this direction.
 - 2. Let us appreciate, suport and contribute our might to the promotional efforts of the community in this direction.
 - 3. Let us appreciate, support and contribute our might to the promotion all efforts of the community in this direction.
 - 4. Let us appreciate, support and contribute our might to the promotional efforts of the community in this direction.

Question ID : 264330151841

Option 1 ID : 264330594994

Option 2 ID : 264330594991

Option 3 ID : 264330594992

Option 4 ID : 264330594993

Status : Answered

Chosen Option : 4

Q.3 Select the most appropriate option to fill in the blank.
The team had a _____ with respect to the proposal given by Mr. Albert.

- Ans
- 1. descussion
 - 2. discussion
 - 3. disckassion
 - 4. discussion

Question ID : 264330153303
Option 1 ID : 264330600770
Option 2 ID : 264330600769
Option 3 ID : 264330600768
Option 4 ID : 264330600767
Status : Answered
Chosen Option : 4

Q.4 Select the option that can be used as a one-word substitute for the given group of words.

A thing which happens every two years

- Ans
- 1. Century
 - 2. Annual
 - 3. Biennial
 - 4. Bi-monthly

Question ID : 264330152584
Option 1 ID : 264330597940
Option 2 ID : 264330597941
Option 3 ID : 264330597939
Option 4 ID : 264330597942
Status : Answered
Chosen Option : 3

Q.5 Select the most appropriate option that can substitute the underlined words in the following sentence.

Ramya's shoes are polish by her granddaughter.

- Ans
- 1. polishes
 - 2. had polished
 - 3. are polished
 - 4. is polish

Question ID : 264330152577
Option 1 ID : 264330597912
Option 2 ID : 264330597914
Option 3 ID : 264330597913
Option 4 ID : 264330597911
Status : Answered
Chosen Option : 3

Q.6 Select the most appropriate idiom to fill in the blank.

I don't think you should go out in the rain, it's _____.

- Ans
- 1. rain on cats and dogs
 - 2. storming cats and dogs
 - 3. raining cats and dogs
 - 4. raining dogs and puppies

Question ID : 264330153079

Option 1 ID : 264330599881

Option 2 ID : 264330599879

Option 3 ID : 264330599880

Option 4 ID : 264330599882

Status : Answered

Chosen Option : 3

Q.7 Select the most appropriate meaning of the given idiom.
To keep one's temper

- Ans
- 1. To meet with disaster
 - 2. To become impatient
 - 3. To become angry
 - 4. To remain calm

Question ID : 264330153522

Option 1 ID : 264330601601

Option 2 ID : 264330601602

Option 3 ID : 264330601600

Option 4 ID : 264330601599

Status : Answered

Chosen Option : 4

Q.8 Select the correct spelling of the underlined word in the following sentence.

Today's lecture had a profond impact on my friend.

- Ans
- 1. profoun
 - 2. prufound
 - 3. prefound
 - 4. profound

Question ID : 264330153083

Option 1 ID : 264330599896

Option 2 ID : 264330599898

Option 3 ID : 264330599897

Option 4 ID : 264330599895

Status : Answered

Chosen Option : 4

Q.9 Select the most appropriate meaning of the given idiom.
To get cold feet

- Ans** 1. To be afraid
 2. To fall sick
 3. To be indifferent
 4. To run for life

Question ID : 264330156175
Option 1 ID : 264330612102
Option 2 ID : 264330612099
Option 3 ID : 264330612100
Option 4 ID : 264330612101
Status : Answered
Chosen Option : 1

Q.10 Select the most appropriate ANTONYM of the underlined word.
His amazing performance made him famous.

- Ans** 1. Ordinary
 2. Colliery
 3. Adversary
 4. Binary

Question ID : 264330151816
Option 1 ID : 264330594892
Option 2 ID : 264330594894
Option 3 ID : 264330594891
Option 4 ID : 264330594893
Status : Answered
Chosen Option : 1

Q.11 Select the most appropriate option that can substitute the underlined segment in the given sentence.
The food was too salty eat this morning.

- Ans** 1. eating
 2. ate
 3. to ate
 4. to eat

Question ID : 264330153396
Option 1 ID : 264330601124
Option 2 ID : 264330601126
Option 3 ID : 264330601125
Option 4 ID : 264330601123
Status : Answered
Chosen Option : 4

Q.12 Select the most appropriate synonym of the given word.
Elegant

- Ans 1. Mighty
 2. Graceful
 3. Ugly
 4. Tall

Question ID : 264330152747
Option 1 ID : 264330598589
Option 2 ID : 264330598587
Option 3 ID : 264330598588
Option 4 ID : 264330598590
Status : Answered
Chosen Option : 2

Q.13 Parts of the following sentence have been underlined and given as options. Select the option that contains an error.
I will going on an official tour next week.

- Ans 1. on
 2. will going
 3. next week
 4. an official tour

Question ID : 264330153188
Option 1 ID : 264330600312
Option 2 ID : 264330600311
Option 3 ID : 264330600314
Option 4 ID : 264330600313
Status : Answered
Chosen Option : 2

Q.14 Parts of the following sentence have been given as options. Select the option that contains an error.
Shelley and Keats are great writers, but I prefer the last.

- Ans 1. the last
 2. are great writers
 3. but I prefer
 4. Shelley and Keats

Question ID : 264330152803
Option 1 ID : 264330598806
Option 2 ID : 264330598804
Option 3 ID : 264330598805
Option 4 ID : 264330598803
Status : Answered
Chosen Option : 1

Q.15 Select the most appropriate synonym of the given word.
Design

- Ans** 1. Fabricate
 2. Destroy
 3. Inspect
 4. Copy

Question ID : 264330152779
Option 1 ID : 264330598709
Option 2 ID : 264330598707
Option 3 ID : 264330598708
Option 4 ID : 264330598710
Status : Answered
Chosen Option : 1

Q.16 Select the option that can be used as a one-word substitute for the given phrase.
A person who is known for his hatred towards the entire mankind.

- Ans** 1. Insolvent
 2. Philogynist
 3. Mercenary
 4. Misanthrope

Question ID : 264330152672
Option 1 ID : 264330598291
Option 2 ID : 264330598294
Option 3 ID : 264330598293
Option 4 ID : 264330598292
Status : Answered
Chosen Option : 4

Q.17 Parts of the following sentence have been given as options. Select the option that contains an error.
Jaya said that she will become topper in her class.

- Ans** 1. in her class
 2. she will become topper
 3. that
 4. Jaya said

Question ID : 264330152821
Option 1 ID : 264330598878
Option 2 ID : 264330598877
Option 3 ID : 264330598876
Option 4 ID : 264330598875
Status : Answered
Chosen Option : 2

Q.18 The following sentence has been split into four segments. Identify the segment that contains a grammatical error.
Some / private banks / pay their employees / good.

- Ans**
- 1. private banks
 - 2. Some
 - 3. pay their employees
 - 4. good

Question ID : 264330153180
Option 1 ID : 264330600280
Option 2 ID : 264330600279
Option 3 ID : 264330600281
Option 4 ID : 264330600282
Status : Answered
Chosen Option : 4

Q.19 Select the most appropriate meaning of the given idiom.

Break the ice

- Ans**
- 1. To say something that makes strangers uncomfortable
 - 2. To say something that makes people who are meeting for the first time more comfortable
 - 3. To say something that makes people excited for a group project
 - 4. To say something mean to people in a group

Question ID : 264330153072
Option 1 ID : 264330599854
Option 2 ID : 264330599851
Option 3 ID : 264330599853
Option 4 ID : 264330599852
Status : Answered
Chosen Option : 2

Q.20 Select the option that can be used as a one-word substitute for the given phrase.
A poem of lamentation on the death of someone loved and admired.

- Ans**
- 1. Soliloquy
 - 2. Elegy
 - 3. Tragedy
 - 4. Epitaph

Question ID : 264330152671
Option 1 ID : 264330598289
Option 2 ID : 264330598290
Option 3 ID : 264330598287
Option 4 ID : 264330598288
Status : Answered
Chosen Option : 2

Comprehension:

In the following passage, some words have been deleted. Read the passage carefully and select the most appropriate option to fill in each blank.

Language is (1)_____ of the most fundamental aspects of human communication and interaction. It allows people from different cultures to connect and (2)_____ ideas. While many individuals grow up learning just one language, there are a variety of reasons why learning a second language can be beneficial. (3)_____, it can improve cognitive abilities, enhance job prospects and facilitate travel and cultural immersion. (4)_____ proficiency in a second language is an invaluable asset for personal growth as well as professional development. Audio-video mediums such as (5)_____ are among the best ways to learn a second language as they allow learners to engage with cultural content.

SubQuestion No : 21

Q.21 Select the most appropriate option to fill in blank number 1.

- Ans**
- 1. three
 - 2. four
 - 3. two
 - 4. one

Question ID : 264330153414

Option 1 ID : 264330601190

Option 2 ID : 264330601187

Option 3 ID : 264330601189

Option 4 ID : 264330601188

Status : Answered

Chosen Option : 4

Comprehension:

In the following passage, some words have been deleted. Read the passage carefully and select the most appropriate option to fill in each blank.

Language is (1)_____ of the most fundamental aspects of human communication and interaction. It allows people from different cultures to connect and (2)_____ ideas. While many individuals grow up learning just one language, there are a variety of reasons why learning a second language can be beneficial. (3)_____, it can improve cognitive abilities, enhance job prospects and facilitate travel and cultural immersion. (4)_____ proficiency in a second language is an invaluable asset for personal growth as well as professional development. Audio-video mediums such as (5)_____ are among the best ways to learn a second language as they allow learners to engage with cultural content.

SubQuestion No : 22

Q.22 Select the most appropriate option to fill in blank number 2.

- Ans**
- 1. sharing
 - 2. share
 - 3. shares
 - 4. shared

Question ID : 264330153415

Option 1 ID : 264330601191

Option 2 ID : 264330601194

Option 3 ID : 264330601193

Option 4 ID : 264330601192

Status : Answered

Chosen Option : 2

Comprehension:

In the following passage, some words have been deleted. Read the passage carefully and select the most appropriate option to fill in each blank.

Language is (1)_____ of the most fundamental aspects of human communication and interaction. It allows people from different cultures to connect and (2)_____ ideas. While many individuals grow up learning just one language, there are a variety of reasons why learning a second language can be beneficial. (3)_____, it can improve cognitive abilities, enhance job prospects and facilitate travel and cultural immersion. (4)_____ proficiency in a second language is an invaluable asset for personal growth as well as professional development. Audio-video mediums such as (5)_____ are among the best ways to learn a second language as they allow learners to engage with cultural content.

SubQuestion No : 23

Q.23 Select the most appropriate option to fill in blank number 3.

- Ans**
- 1. Therefore
 - 2. As it is
 - 3. However
 - 4. For example

Question ID : 264330153416

Option 1 ID : 264330601196

Option 2 ID : 264330601198

Option 3 ID : 264330601195

Option 4 ID : 264330601197

Status : Answered

Chosen Option : 4

Comprehension:

In the following passage, some words have been deleted. Read the passage carefully and select the most appropriate option to fill in each blank.

Language is (1)_____ of the most fundamental aspects of human communication and interaction. It allows people from different cultures to connect and (2)_____ ideas. While many individuals grow up learning just one language, there are a variety of reasons why learning a second language can be beneficial. (3)_____, it can improve cognitive abilities, enhance job prospects and facilitate travel and cultural immersion. (4)_____ proficiency in a second language is an invaluable asset for personal growth as well as professional development. Audio-video mediums such as (5)_____ are among the best ways to learn a second language as they allow learners to engage with cultural content.

SubQuestion No : 24

Q.24 Select the most appropriate option to fill in blank number 4.

- Ans**
- 1. Acquiring
 - 2. Acquires
 - 3. Acquire
 - 4. Acquired

Question ID : 264330153417

Option 1 ID : 264330601199

Option 2 ID : 264330601202

Option 3 ID : 264330601200

Option 4 ID : 264330601201

Status : Answered

Chosen Option : 1

Comprehension:

In the following passage, some words have been deleted. Read the passage carefully and select the most appropriate option to fill in each blank.

Language is (1)_____ of the most fundamental aspects of human communication and interaction. It allows people from different cultures to connect and (2)_____ ideas. While many individuals grow up learning just one language, there are a variety of reasons why learning a second language can be beneficial. (3)_____, it can improve cognitive abilities, enhance job prospects and facilitate travel and cultural immersion. (4)_____ proficiency in a second language is an invaluable asset for personal growth as well as professional development. Audio-video mediums such as (5)_____ are among the best ways to learn a second language as they allow learners to engage with cultural content.

SubQuestion No : 25

Q.25 Select the most appropriate option to fill in blank number 5.

- Ans**
- 1. podcasts
 - 2. images
 - 3. books
 - 4. films

Question ID : 264330153418

Option 1 ID : 264330601203

Option 2 ID : 264330601206

Option 3 ID : 264330601205

Option 4 ID : 264330601204

Status : Answered

Chosen Option : 1