

QID : 201 -

In the following question, select the number which can be placed at the sign of question mark (?) from the given alternatives.

निम्नलिखित प्रश्न में दिए गए विकल्पों में से प्रश्न चिह्न (?) के स्थान पर आने वाली संख्या को चुनिए।

2	3
3	4

9	2
2	2

6	3
2	?

Options:

- 1) 1
- 2) 2
- 3) 3
- 4) 6

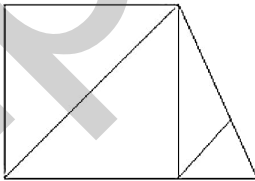
Correct Answer: 2

Candidate Answer: 2

QID : 202 -

How many triangles are there in the given figure?

दी गई आकृति में कितने त्रिभुज हैं?



Options:

- 1) 4
- 2) 5
- 3) 6
- 4) 7

Correct Answer: 6

Candidate Answer: 6

QID : 203 -

A word is represented by only one set of numbers as given in any one of the alternatives. The sets of numbers given in the alternatives are represented by two classes of alphabets as shown in the given two matrices. The columns and rows of **Matrix-I** are numbered from 0 to 4 and that of **Matrix-II** are numbered from 5 to 9. A letter from these matrices can be represented first by its row and next by its column, for example, 'F' can be represented by 24, 85, etc., and 'K' can be represented by 41, 57, etc. Similarly, you have to identify the set for the word "YATCH".

एक शब्द केवल एक संख्या-समूह द्वारा दर्शाया गया है, जैसा कि विकल्पों में से किसी एक में दिया गया है। विकल्पों में दिए गए संख्या-समूह अक्षरों के दो वर्गों द्वारा दर्शाए गए हैं, जैसा कि दिए गए दो आव्यूहों में है। आव्यूह-I के स्तम्भ और पंक्ति की संख्या 0 से 4 है और आव्यूह-II की 5 से 9। इन आव्यूहों से एक अक्षर को पहले उसकी पंक्ति और बाद में स्तम्भ संख्या द्वारा दर्शाया जा सकता है। उदाहरण के लिए 'F' को 24, 85, आदि द्वारा दर्शाया जा सकता है तथा 'K' को 41, 57, आदि द्वारा दर्शाया जा सकता है। इसी तरह से आपको प्रश्न में दिए शब्द "YATCH" के लिए समूह को पहचानना है।

Matrix-I
आव्यूह-I

	0	1	2	3	4
0	C	U	G	J	D
1	S	F	J	N	U
2	Y	P	V	M	F
3	I	E	A	C	H
4	T	K	D	Q	L

Matrix-II
आव्यूह-II

	5	6	7	8	9
5	A	V	K	T	H
6	L	R	T	O	N
7	I	Q	W	Y	P
8	F	H	R	M	S
9	U	G	A	Q	B

Options:

- 1) 78, 55, 40, 01, 55
- 2) 20, 55, 58, 33, 86
- 3) 78, 32, 57, 34, 33
- 4) 20, 32, 67, 00, 33

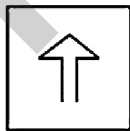
Correct Answer: 20, 55, 58, 33, 86

Candidate Answer: 20, 55, 58, 33, 86

QID : 204 -

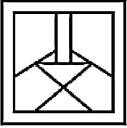
From the given answer figures, select the one in which the question figure is hidden/embedded.

दी गई उत्तर आकृतियों में से उस उत्तर आकृति को चुनिए जिस में प्रश्न आकृति निहित है।

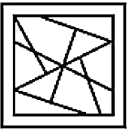


Options:

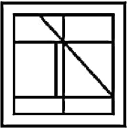
1)



2)



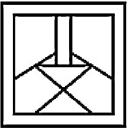
3)



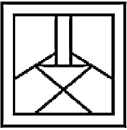
4)



Correct Answer:



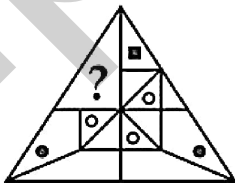
Candidate Answer:



QID : 205 -

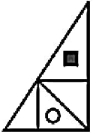
Which answer figure will complete the pattern in the question figure?

कौन सी उत्तर आकृति प्रश्न आकृति के प्रतिरूप को पूरा करेगी?

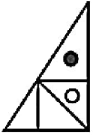


Options:

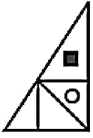
1)



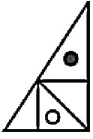
2)



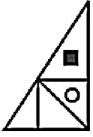
3)



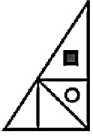
4)



Correct Answer:



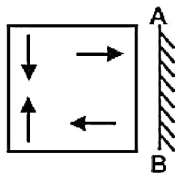
Candidate Answer:



QID : 206 -

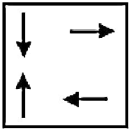
If a mirror is placed on the line AB, then which of the answer figures is the right image of the given figure?

यदि एक दर्पण को AB रेखा पर रखा जाए, तो दी गई उत्तर आकृतियों में से कौन सी आकृति प्रश्न आकृति की सही प्रतिबिम्ब होगी?

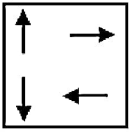


Options:

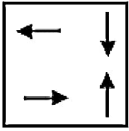
1)



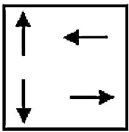
2)



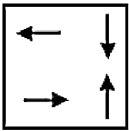
3)



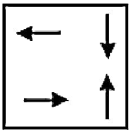
4)



Correct Answer:



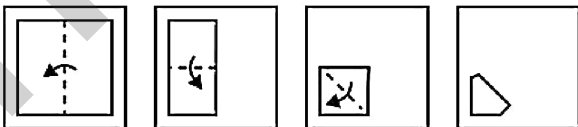
Candidate Answer:



QID : 207 -

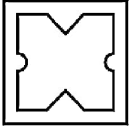
A piece of paper is folded and punched as shown below in the question figures. From the given answer figures, indicate how it will appear when opened?

नीचे के प्रश्न आकृतियों में दिखाए अनुसार कागज को मोड़कर छेदने तथा खोलने के बाद वह किस उत्तर आकृति जैसा दिखाई देगा?

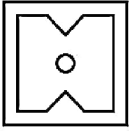


Options:

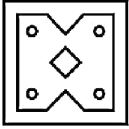
1)



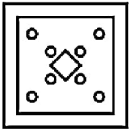
2)



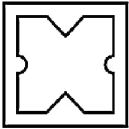
3)



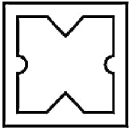
4)



Correct Answer:



Candidate Answer:



QID : 208 - By interchanging which two digits the equation will be correct?

$$38 \times 6 \div 19 + 4 = 17$$

किन दो अंकों को आपस में परस्पर बदलने पर समीकरण सही हो जाएगा?

$$38 \times 6 \div 19 + 4 = 17$$

Options:

1) 9 and 7

9 तथा 7

2) 3 and 6

3 तथा 6

3) 4 and 6

4 तथा 6

4) 8 and 9

8 तथा 9

Correct Answer: 8 and 9

8 तथा 9

Candidate Answer: 8 and 9

8 तथा 9

QID : 209 - If $19 @ 2 \# 13 = 51$ and $14 @ 3 \# 9 = 51$, then

$$15 @ 3 \# 6 = ?$$

यदि $19 @ 2 \# 13 = 51$ तथा $14 @ 3 \# 9 = 51$ हो, तो

$$15 @ 3 \# 6 = ?$$

Options:

1) 55

2) 69

3) 51

4) 76

Correct Answer: 51

Candidate Answer: 51

QID : 210 - Arrange the given words in the sequence in which they occur in the dictionary.

1. Yellow
2. Yester
3. Yours
4. Yocto
5. Yards

निम्नलिखित शब्दों को शब्दकोश में आने वाले क्रम के अनुसार लिखें।

1. Yellow
2. Yester
3. Yours
4. Yocto
5. Yards

Options:

1) 52134

2) 51243

3) 52413

4) 51342

Correct Answer: 51243

Candidate Answer: 51243

QID : 211 - In the following question, select the missing number from the given series.

1, 8, 9, 64, 25, 216, ?

निम्नलिखित प्रश्न में दिए गए विकल्पों में से लुप्त अंक ज्ञात कीजिए।

1, 8, 9, 64, 25, 216, ?

Options:

1) 36

2) 343

3) 49

4) 64

Correct Answer: 49

Candidate Answer: 343

QID : 212 - A series is given with one term missing. Select the correct alternative from the given ones that will complete the series.

T, R, P, N, L, ?

एक अनुक्रम दिया गया है, जिसमें से एक पद लुप्त है। दिए गए विकल्पों में से वह सही विकल्प चुनिए, जो अनुक्रम को पूरा करे।

T, R, P, N, L, ?

Options:

1) G

2) H

3) I

4) J

Correct Answer: J

Candidate Answer: J

QID : 213 - In the following question, select the odd word from the given alternatives.

निम्नलिखित प्रश्न में दिए गए विकल्पों में से विषम शब्द को चुनिए।

Options:

1) See

देखना

2) Run

दौड़ना

3) Walk

चलना

4) Jump

छल्लोंग

Correct Answer: See

देखना

Candidate Answer: See

देखना

QID : 214 - In the following question, select the odd number pair from the given alternatives.

निम्नलिखित प्रश्न में दिए गए विकल्पों में से

Options:

- 1) 9 – 27
- 2) 121 – 1331
- 3) 4 – 16
- 4) 25 – 125

Correct Answer: 4 – 16

Candidate Answer: 4 – 16

QID : 215 - In the following question, select the odd letters from the given alternatives.

निम्नलिखित प्रश्न में दिए गए विकल्पों में से विषम अक्षरों को चुनिए।

Options:

- 1) PMJ
- 2) TQM
- 3) NKH
- 4) HEB

Correct Answer: TQM

Candidate Answer: TQM


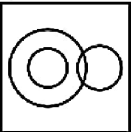
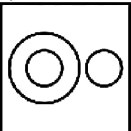
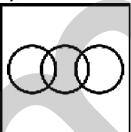
QID : 216 - Identify the diagram that best represents the relationship among the given classes.

Male, Doctor, Engineer

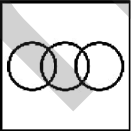
वह आरेख चुनिए जो नीचे दिए गए वर्गों के बीच के संबंध का सही निरूपण करता है।

पुरुष, डॉक्टर, इंजीनियर

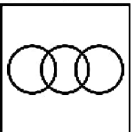
Options:

- 1) 
- 2) 
- 3) 
- 4) 

Correct Answer:



Candidate Answer:



QID : 217 - In the following question, select the related word from the given alternatives.

Cold : Warm :: Dubious : ?

निम्नलिखित प्रश्न में दिए गए विकल्पों में से संबंधित शब्द को चुनिए।

ठंडा : गर्म :: संदिग्ध : ?

Options:

- 1) Certain
असंदिग्ध
- 2) Angry
अप्रसन्न
- 3) Relation
संबंध
- 4) Elongated
लम्बा

Correct Answer: Certain
असंदिग्ध

Candidate Answer: Certain
असंदिग्ध

QID : 218 - In the following question, select the related number from the given alternatives.

2568 : 428 :: 4170 : ?

निम्नलिखित प्रश्न में दिए गए विकल्पों में से संबंधित संख्या को चुनिए।

2568 : 428 :: 4170 : ?

Options:

- 1) 719
- 2) 671
- 3) 695
- 4) 731

Correct Answer: 695

Candidate Answer: 695

QID : 219 - In the following question, select the related letters from the given alternatives.

RJ : OF :: BT : ?

निम्नलिखित प्रश्न में दिए गए विकल्पों में से संबंधित अक्षरों को चुनिए।

RJ : OF :: BT : ?

Options:

- 1) ZQ
- 2) YP
- 3) YQ
- 4) ZP

Correct Answer: YP

Candidate Answer: YP

QID : 220 - In the following question, select the word which cannot be formed using the letters of the given word.

TRUECALLER

निम्नलिखित विकल्पों में से वह शब्द चुनिए जो दिए गए शब्द के अक्षरों का प्रयोग करके नहीं बनाया जा सकता।

TRUECALLER

Options:

- 1) TRUE
- 2) LURE
- 3) REAL
- 4) RAIL

Correct Answer: RAIL

Candidate Answer: RAIL

QID : 221 - Ram is 18th from left and 23rd from right in a line of people. How many people are there in the line?

व्यक्तियों की एक पंक्ति में राम बायें से 18-वां तथा दायें से 23-वां है। पंक्ति में कुल कितने व्यक्ति हैं?

Options:

- 1) 40
- 2) 41
- 3) 42
- 4) 39

Correct Answer: 40

Candidate Answer: 40

QID : 222 - A is taller than B. B is shorter than C. D is taller than A but shorter than C. Who is the tallest?

A, B से लम्बा है। B, C से छोटा है। D, A से लम्बा है परंतु C से छोटा है। सबसे लम्बा कौन है?

Options:

- 1) A
- 2) B
- 3) C
- 4) D

Correct Answer: C

Candidate Answer: C

QID : 223 - In the following question below are given some statements followed by some conclusions. Taking the given statements to be true even if they seem to be at variance from commonly known facts, read all the conclusions and then decide which of the given conclusion logically follows the given statements.

Statements:

- I. No white is coal.
- II. No coal is black.

Conclusions:

- I. No white is black.
- II. Some white are black.

नीचे दिए गए प्रश्न में कुछ कथन और उनके बाद उन कथनों पर आधारित कुछ निष्कर्ष दिए गए हैं, हालांकि उनमें सामान्य ज्ञात तथ्यों से भिन्नता हो सकती है। सभी निष्कर्ष पढ़ें और फिर निर्धारित करें कि दिए गए कौन से निष्कर्ष, दिए गए कथनों के आधार पर युक्तिसंगत हैं।

कथन:

- I. कोई सफेद कोयला नहीं है।
- II. कोई कोयला काला नहीं है।

निष्कर्ष:

- I. कोई सफेद काला नहीं है।
- II. कुछ सफेद काले हैं।

Options:

- 1) Only conclusion (I) follows.
केवल निष्कर्ष (I) सही है।
- 2) Only conclusion (II) follows.
केवल निष्कर्ष (II) सही है।
- 3) Both conclusion follow.
दोनों ही निष्कर्ष सही हैं।
- 4) Neither conclusion (I) nor conclusion (II) follows.
न तो निष्कर्ष (I) न ही निष्कर्ष (II) सही है।

Correct Answer: Neither conclusion (I) nor conclusion (II) follows.

न तो निष्कर्ष (I) न ही निष्कर्ष (II) सही है।

Candidate Answer: Neither conclusion (I) nor conclusion (II) follows.

न तो निष्कर्ष (I) न ही निष्कर्ष (II) सही है।

QID : 224 - In a certain code language, "EMU" is written as "DLT". How is "FIN" written in that code language?

एक विशिष्ट कोड भाषा में, "EMU" को "DLT" लिखा जाता है। इस कोड भाषा में "FIN" को किस प्रकार लिखा जाएगा?

Options:

- 1) GJM
- 2) EHM
- 3) GHM
- 4) EJM

Correct Answer: EHM

Candidate Answer: EHM

QID : 225 - In a certain code language, "MAN" is written as "28" and "SUN" is written as "54". How is "BIT" written in that code language?

एक विशिष्ट कोड भाषा में, "MAN" को "28" तथा "SUN" को "54" लिखा जाता है। इस कोड भाषा में "BIT" को किस प्रकार लिखा जाएगा?

Options:

- 1) 29
- 2) 31
- 3) 34
- 4) 37

Correct Answer: 31

Candidate Answer: 31

QID : 226 - If the difference of squares of two consecutive odd numbers is 64, then what is their sum?

यदि दो क्रमागत विषम संख्याओं के वर्गों का अंतर 64 है तो उनका योग क्या होगा?

Options:

- 1) 34
- 2) 32
- 3) 30
- 4) 17

Correct Answer: 32

Candidate Answer: 32

QID : 227 - Which of the following is greatest?

11/12, 3/4, 10/11

निम्नलिखित में से कौन सबसे बड़ा है?

11/12, 3/4, 10/11

Options:

- 1) 11/12
 - 2) 3/4
 - 3) 10/11
 - 4) All are equal
- सभी बराबर हैं

Correct Answer: 11/12

Candidate Answer: 11/12

QID : 228 - If y is an integer, then $(y^3 - y)$ is always multiple of ____.

यदि y एक पूर्णांक है, तो $(y^3 - y)$ सदैव ____ का गुणज होगा?

Options:

- 1) 5
- 2) 7
- 3) 9
- 4) 6

Correct Answer: 6

Candidate Answer: 6

QID : 229 - Which of the following number is divisible by 6?

निम्नलिखित में से कौन सी संख्या 6 से विभाज्य है?

Options:

- 1) 23562
- 2) 43742
- 3) 53422
- 4) 44444

Correct Answer: 23562

Candidate Answer: 23562

QID : 230 -

What is the value of $\frac{(0.7)^3 - (0.4)^3}{[(0.7)^2 + (0.4)^2 + (0.7) \times (0.4)]}$?

$\frac{(0.7)^3 - (0.4)^3}{[(0.7)^2 + (0.4)^2 + (0.7) \times (0.4)]}$ का मान क्या है?

Options:

- 1) 0.5
- 2) 0.2
- 3) 0.3
- 4) 0.1

Correct Answer: 0.3

Candidate Answer: 0.3

QID : 231 - The product of two numbers is 630. If one of the number is 18, then what is the another number?

दो संख्याओं का गुणनफल 630 है। यदि एक संख्या 18 है, तो दूसरी संख्या क्या है?

Options:

- 1) 34
- 2) 36
- 3) 35
- 4) 38

Correct Answer: 35

Candidate Answer: 35

QID : 232 - A and B together can do a piece of work in 10 days and A alone can do it in 30 days. B alone can do the work in how many days?

A तथा B मिलकर एक कार्य को 10 दिनों में पूरा कर सकते हैं तथा A अकेले उसे 30 दिनों में कर सकता है। B अकेले उस कार्य को कितने दिनों में पूरा कर सकता है?

Options:

- 1) 15
- 2) 12
- 3) 18
- 4) 24

Correct Answer: 15

Candidate Answer: 15

QID : 233 - Three taps A, B and C can fill a tank in 20, 24 and 30 hours respectively. How long (in hours) would the three taps take to fill the tank if all of them are opened together?

तीन नल A, B तथा C किसी टंकी को क्रमशः 20, 24 तथा 30 घंटे में भर सकते हैं। यदि तीनों नल एक साथ खोल दिए जाते हैं, तो वह सभी टंकी को भरने में कितना समय (घंटों में) में लेंगे?

Options:

- 1) 8
- 2) 12
- 3) 9
- 4) 6

Correct Answer: 8

Candidate Answer: 8

QID : 234 - The length and breadth of a rectangular field are in the ratio of 5 : 4. If the perimeter of the field is 90 m, then what is its breadth (in metres)?

एक आयताकार क्षेत्र की लम्बाई तथा चौड़ाई का अनुपात 5 : 4 है। यदि क्षेत्र का परिमाप 90 मीटर है, तो उसकी चौड़ाई (मीटर में) क्या है?

Options:

- 1) 12
- 2) 15
- 3) 20
- 4) 30

Correct Answer: 20

Candidate Answer: 20

QID : 235 - A trader allows two successive discounts of 10% and 10% on selling an article. If he sells that article for Rs 405, then what is the marked price (in Rs) of the article?

एक विक्रेता किसी वस्तु को बेचते समय दो क्रमिक छूट 10% तथा 10% देता है। यदि वह इस वस्तु को 405 रु में बेचता है, तो वस्तु का अंकित मूल्य (रु में) क्या है?

Options:

- 1) 500
- 2) 560
- 3) 640
- 4) 700

Correct Answer: 500

Candidate Answer: 500

QID : 236 - What is the net discount (in %) for successive discounts of 30% and 50%?

30% तथा 50% की दो क्रमागत छूटों की निवल (नेट) छूट (% में) क्या है?

Options:

- 1) 65
- 2) 70
- 3) 75
- 4) 80

Correct Answer: 65

Candidate Answer: 65

QID : 237 - If $P : Q = 3 : 4$ and $Q : R = 2 : 5$, then what is $(P + Q) : (Q + R)$?

यदि $P : Q = 3 : 4$ तथा $Q : R = 2 : 5$ है, तो $(P + Q) : (Q + R)$ क्या है?

Options:

- 1) 1 : 2
- 2) 1 : 3
- 3) 2 : 3
- 4) 2 : 5

Correct Answer: 1 : 2

Candidate Answer: 1 : 2

QID : 238 - If $(3/2)P = (4/5)Q = (2/3)R$, then what is $P : Q : R$?

यदि $(3/2)P = (4/5)Q = (2/3)R$ हो, तो $P : Q : R$ क्या है?

Options:

1) 8 : 15 : 18

2) 3 : 4 : 2

3) 2 : 4 : 3

4) 8 : 15 : 6

Correct Answer: 8 : 15 : 18**Candidate Answer:** 8 : 15 : 18**QID : 239** - The average of 104, 102, 109, A and 112 is 109. What is the value of A?

104, 102, 109, A तथा 112 का औसत 109 है। A का मान क्या है?

Options:

1) 114

2) 116

3) 118

4) 120

Correct Answer: 118**Candidate Answer:** 118**QID : 240** - If chairs are bought at Rs 600 each and sold at Rs 500 each, then what will be the loss percentage?

यदि कुर्सियों को 600 रु प्रति कुर्सी की दर से खरीदकर 500 रु प्रति कुर्सी की दर से बेच दिया जाता है, तो हानि प्रतिशत क्या होगा?

Options:

1) 12.53

2) 16.66

3) 18.52

4) 21.62

Correct Answer: 16.66**Candidate Answer:** 16.66**QID : 241** - An article is sold at 20% profit instead of 5% loss, the man gains Rs 120 more. What is the cost price (in Rs) of that article?

एक वस्तु को 20% हानि के बदले 5% लाभ पर बेचने पर एक व्यक्ति को 120 रु अधिक प्राप्त होते हैं। वस्तु का क्रय मूल्य (रु में) क्या है?

Options:

1) 480

2) 720

3) 1020

4) 1080

Correct Answer: 480**Candidate Answer:** 480**QID : 242** - If the price of a commodity is decreased by 20% and its consumption is increased by 10%, then what will be the percentage increase or decrease in the expenditure of the commodity?

यदि एक वस्तु की कीमत 20% कम हो जाती है तथा उसकी खपत 10% बढ़ जाती है, तो वस्तु पर खर्च में कितने प्रतिशत की वृद्धि या कमी होगी?

Options:

1) 10% decrease

10% की कमी

2) 10% increase

10% की वृद्धि

3) 12% increase

12% की वृद्धि

4) 12% decrease

12% की कमी

Correct Answer: 12% decrease

12% की कमी

Candidate Answer: 12% decrease

12% की कमी

QID : 243 - What is the value of 20% of 30% of 1200?

1200 के 30% के 20% का मान क्या है?

Options:

- 1) 36
- 2) 72
- 3) 108
- 4) 144

Correct Answer: 72

Candidate Answer: 72

QID : 244 - Speed of a boat along the current and against the current are 10 km/hr and 8 km/hr respectively. What is the speed of boat (in km/hr) in still water?

एक नाव की गति धारा के अनुकूल तथा धारा के प्रतिकूल क्रमशः 10 कि.मी./घंटा तथा 8 कि.मी./घंटा है। शांत जल में नाव की गति (कि.मी./घंटा में) क्या है?

Options:

- 1) 2
- 2) 9
- 3) 4.5
- 4) 6

Correct Answer: 9

Candidate Answer: 9

QID : 245 - A train travels some distance at a speed of 15 km/hr and returns at a speed of 9 km/hr. If the total time taken by the train is 8 hours, then what is the distance (in km)?

एक रेलगाड़ी 15 कि.मी./घंटा की गति से कुछ दूरी तय करती है तथा 9 कि.मी./घंटा की गति से वापस आती है। यदि रेलगाड़ी को इसे तय करने में कुल 8 घंटे का समय लगता है, तो दूरी (कि.मी. में) क्या है?

Options:

- 1) 45
- 2) 36
- 3) 42
- 4) 60

Correct Answer: 45

Candidate Answer: 45

QID : 246 - An amount invested at simple interest gives Rs 2400 interest at rate of 12% in 5 years. What is the principal (in Rs)?

एक धनराशि साधारण ब्याज पर निवेश की जाती है जोकि 5 वर्ष में 12% की दर से 2400 रु का ब्याज देती है। मूलधन (रु में) क्या है?

Options:

- 1) 3000
- 2) 4000
- 3) 5000
- 4) 6000

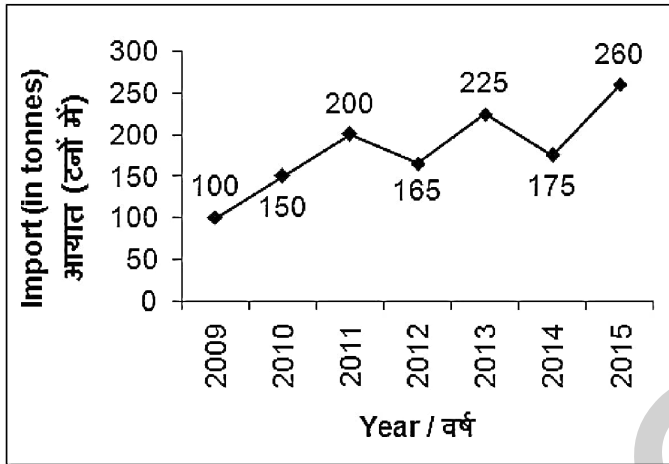
Correct Answer: 4000

Candidate Answer: 4000

QID : 247 -

The line chart given below shows the wheat imported (in tonnes) by the flour manufacturing company A from years 2009 to 2015.

नीचे दिए गए रेखा चित्र में वर्ष 2009 से 2015 तक एक आटा उत्पादक कंपनी A द्वारा गेहूँ के आयात (टनों में) को दर्शाया गया है।



What is the percentage change in import of wheat from year 2010 to 2014?

वर्ष 2010 से वर्ष 2014 तक गेहूँ के आयात में कितना प्रतिशत परिवर्तन हुआ है?

Options:

- 1) 75
- 2) 175
- 3) 16.67
- 4) 25

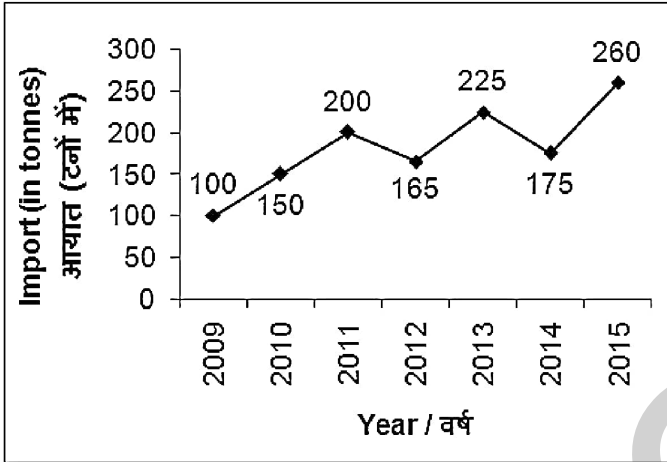
Correct Answer: 16.67

Candidate Answer: 16.67

QID : 248 -

The line chart given below shows the wheat imported (in tonnes) by the flour manufacturing company A from years 2009 to 2015.

नीचे दिए गए रेखा चित्र में वर्ष 2009 से 2015 तक एक आटा उत्पादक कंपनी A द्वारा गेहूँ के आयात (टनों में) को दर्शाया गया है।



What is the average wheat import (in tonnes) from year 2009 to 2013?

वर्ष 2009 से वर्ष 2013 तक गेहूँ का औसत आयात (टनों में) क्या है?

Options:

- 1) 170
- 2) 168
- 3) 180
- 4) 165

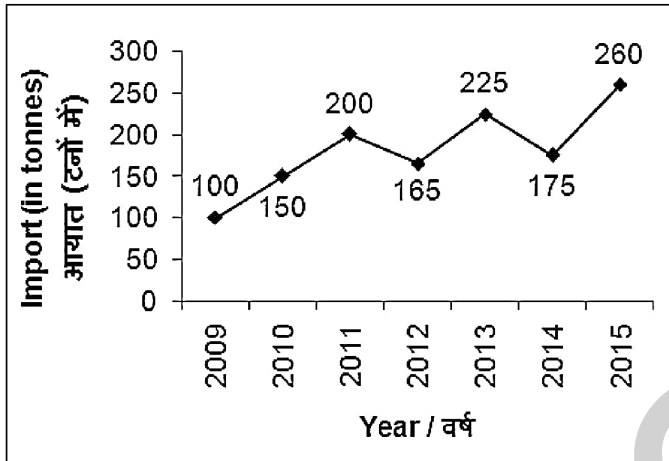
Correct Answer: 168

Candidate Answer: 168

QID : 249 -

The line chart given below shows the wheat imported (in tonnes) by the flour manufacturing company A from years 2009 to 2015.

नीचे दिए गए रेखा चित्र में वर्ष 2009 से 2015 तक एक आटा उत्पादक कंपनी A द्वारा गेहूँ के आयात (टनों में) को दर्शाया गया है।



In how many years, the import was more than the import in 2012?

कितने वर्षों में, आयात वर्ष 2012 के आयात से अधिक था?

Options:

- 1) 2
- 2) 3
- 3) 4
- 4) 5

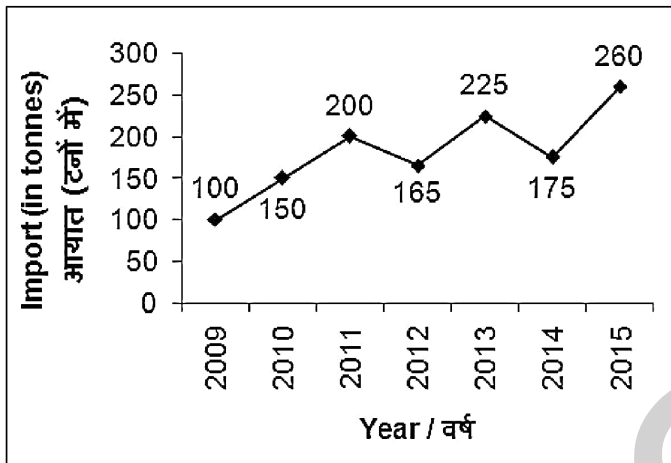
Correct Answer: 4

Candidate Answer: 4

QID : 250 -

The line chart given below shows the wheat imported (in tonnes) by the flour manufacturing company A from years 2009 to 2015.

नीचे दिए गए रेखा चित्र में वर्ष 2009 से 2015 तक एक आटा उत्पादक कंपनी A द्वारा गेहूँ के आयात (टनों में) को दर्शाया गया है।



What is the percentage change in the wheat imported from year 2009 to 2013?

वर्ष 2009 से वर्ष 2013 तक आयातित गेहूँ में कितना प्रतिशत परिवर्तन हुआ है?

Options:

- 1) 225
- 2) 150
- 3) 100
- 4) 125

Correct Answer: 125

Candidate Answer: 125

QID : 251 - In the following question, some part of the sentence may have errors. Find out which part of the sentence has an error and select the appropriate option. If a sentence is free from error, select 'No Error'.

Even if we missed a day's work, (1)/ our salaries are not cut and we (2)/ were paid in full. (3)/ No Error (4)

Options:

- 1) 1
- 2) 2
- 3) 3
- 4) 4

Correct Answer: 2

Candidate Answer: 2

QID : 252 - In the following question, some part of the sentence may have errors. Find out which part of the sentence has an error and select the appropriate option. If a sentence is free from error, select 'No Error'.

An ethos of equality was one (1)/ of the major reasons for their (2)/ belief in 'satguru'. (3)/ No Error (4)

Options:

- 1) 1
- 2) 2
- 3) 3
- 4) 4

Correct Answer: 1

Candidate Answer: 1

QID : 253 - In the following question, the sentence given with blank to be filled in with an appropriate word. Select the correct alternative out of the four and indicate it by selecting the appropriate option.

He killed three _____ for dinner.

Options:

- 1) forl
- 2) fowls
- 3) fool
- 4) flour

Correct Answer: fowls

Candidate Answer: fowls

QID : 254 - In the following question, the sentence given with blank to be filled in with an appropriate word. Select the correct alternative out of the four and indicate it by selecting the appropriate option.

Mr. Jain has been in this college _____ 2000.

Options:

- 1) for
- 2) since
- 3) of
- 4) off

Correct Answer: since

Candidate Answer: since

QID : 255 - In the following question, out of the given four alternatives, select the one which best expresses the meaning of the given word.

Cavalier

Options:

- 1) Nobleman
- 2) Gentleman
- 3) Rude boy
- 4) Patrician

Correct Answer: Gentleman

Candidate Answer: Nobleman

QID : 256 - In the following question, out of the given four alternatives, select the one which best expresses the meaning of the given word.

Sneer

Options:

- 1) Mock
- 2) Compliment
- 3) Praise
- 4) Applaud

Correct Answer: Mock

Candidate Answer: Mock

QID : 257 - In the following question, out of the given four alternatives, select the one which best expresses the meaning of the given word.

Solemn

Options:

- 1) Funny
- 2) Pensive
- 3) Laughing
- 4) Light

Correct Answer: Pensive

Candidate Answer: Pensive

QID : 258 - In the following question, out of the given four alternatives, select the one which is opposite in meaning of the given word.

Repulsive

Options:

- 1) Creepy
- 2) Hateful
- 3) Ugly
- 4) Pleasing

Correct Answer: Pleasing

Candidate Answer: Pleasing

QID : 259 - In the following question, out of the given four alternatives, select the one which is opposite in meaning of the given word.

Taciturn

Options:

- 1) Silent
- 2) Talkative
- 3) Reticent
- 4) Reserved

Correct Answer: Talkative

Candidate Answer: Talkative

QID : 260 - In the following question, out of the given four alternatives, select the one which is opposite in meaning of the given word.

Cease

Options:

- 1) Pause
- 2) Desist
- 3) Terminate
- 4) Continue

Correct Answer: Continue

Candidate Answer: Continue

QID : 261 - In the following question, out of the four given alternatives, select the alternative which best expresses the meaning of the Idiom/Phrase.

Do or die

Options:

- 1) To deceive someone
- 2) To make a final effort
- 3) To criticize one
- 4) To interrupt one

Correct Answer: To make a final effort

Candidate Answer: To make a final effort

QID : 262 - In the following question, out of the four given alternatives, select the alternative which best expresses the meaning of the Idiom/Phrase.

On account of

Options:

- 1) Instead of
- 2) Despite
- 3) Because of
- 4) Rejecting something

Correct Answer: Because of

Candidate Answer: Because of

QID : 263 - Improve the bracketed part of the sentence.

Sindhu's latest medal, to go with the Rio Olympics silver last year, has clearly **(took her past)** Nehwal.

Options:

- 1) taking her past
- 2) takes her past
- 3) taken her past
- 4) No improvement

Correct Answer: taken her past

Candidate Answer: taken her past

QID : 264 - Improve the bracketed part of the sentence.

And makes it a point to remind **(eachone)** that her recovery is still incomplete, and that she would be back at her best in upcoming competitions.

Options:

- 1) everyone
- 2) each people
- 3) every people
- 4) No improvement

Correct Answer: everyone

Candidate Answer: everyone

QID : 265 - In the following question, out of the four given alternatives, select the alternative which is the best substitute of the phrase.

Something that serves as a reminder.

Options:

- 1) Moderato
- 2) Obligato
- 3) Momento
- 4) Crypto

Correct Answer: Momento

Candidate Answer: Momento

QID : 266 - In the following question, out of the four given alternatives, select the alternative which is the best substitute of the phrase.

A building which is constructed to keep alive one's memory.

Options:

- 1) Monument
- 2) Fort
- 3) Kingdom
- 4) Statue

Correct Answer: Monument

Candidate Answer: Monument

QID : 267 - In the following question, a word has been written in four different ways out of which only one is correctly spelt. Select the correctly spelt word.

Options:

- 1) Micsellaneous
- 2) Miscelaneous
- 3) Miscellanious
- 4) Miscellaneous

Correct Answer: Miscellaneous

Candidate Answer: Miscellaneous

QID : 268 - In the following question, a word has been written in four different ways out of which only one is correctly spelt. Select the correctly spelt word.

Options:

- 1) Maintane
- 2) Maintain
- 3) Muntain
- 4) Maintein

Correct Answer: Maintain

Candidate Answer: Maintain

QID : 269 - Rearrange the parts of the sentence in correct order.

Time management

P: one's time efficiently so as

Q: to be more productive and organized

R: is the ability to utilize

Options:

1) RPQ

2) PQR

3) QPR

4) PRQ

Correct Answer: RPQ

Candidate Answer: RPQ

QID : 270 - Rearrange the parts of the sentence in correct order.

Disaster management is a

P: well-planned strategy for

Q: hazards caused by the disaster

R: making efforts to reduce the

Options:

1) PQR

2) RQP

3) PRQ

4) QRP

Correct Answer: PRQ

Candidate Answer: PRQ

QID : 271 - In the following passage some of the words have been left out. Read the passage carefully and select the correct answer for the given blank out of the four alternatives.

Child labour is commonly seen at various places in India. From roadside tea stalls to big and small factories producing _____ products like cement, handloom and jute products, carpets, fashionable tawdry ornaments and fireworks and many other hazardous jobs. Children are working in _____ condition. There have been cases where child labours were severely beaten and offered no medical help, in case they complained or try to _____. There are practical difficulties in the way of abolishing child labor overnight. Without _____ poverty child labor cannot be abolished. There must be a special _____ to check the evil.

factories producing _____ products

Options:

1) waste

2) sundry

3) bring

4) producing

Correct Answer: sundry

Candidate Answer: sundry

QID : 272 - In the following passage some of the words have been left out. Read the passage carefully and select the correct answer for the given blank out of the four alternatives.

Child labour is commonly seen at various places in India. From roadside tea stalls to big and small factories producing _____ products like cement, handloom and jute products, carpets, fashionable tawdry ornaments and fireworks and many other hazardous jobs. Children are working in _____ condition. There have been cases where child labours were severely beaten and offered no medical help, in case they complained or try to _____. There are practical difficulties in the way of abolishing child labor overnight. Without _____ poverty child labor cannot be abolished. There must be a special _____ to check the evil.

are working in _____ condition.

Options:

1) neat and clean

2) abysmal

3) hopeful

4) good

Correct Answer: abysmal

Candidate Answer: abysmal

QID : 273 - In the following passage some of the words have been left out. Read the passage carefully and select the correct answer for the given blank out of the four alternatives.

Child labour is commonly seen at various places in India. From roadside tea stalls to big and small factories producing _____ products like cement, handloom and jute products, carpets, fashionable tawdry ornaments and fireworks and many other hazardous jobs. Children are working in _____ condition. There have been cases where child labours were severely beaten and offered no medical help, in case they complained or try to _____. There are practical difficulties in the way of abolishing child labor overnight. Without _____ poverty child labor cannot be abolished. There must be a special _____ to check the evil.

complain or try to _____.

Options:

- 1) relate
- 2) negotiate
- 3) escape
- 4) innate

Correct Answer: escape

Candidate Answer: escape

QID : 274 - In the following passage some of the words have been left out. Read the passage carefully and select the correct answer for the given blank out of the four alternatives.

Child labour is commonly seen at various places in India. From roadside tea stalls to big and small factories producing _____ products like cement, handloom and jute products, carpets, fashionable tawdry ornaments and fireworks and many other hazardous jobs. Children are working in _____ condition. There have been cases where child labours were severely beaten and offered no medical help, in case they complained or try to _____. There are practical difficulties in the way of abolishing child labor overnight. Without _____ poverty child labor cannot be abolished. There must be a special _____ to check the evil.

Without _____ poverty child labor

Options:

- 1) initiating
- 2) decreasing
- 3) referring
- 4) eradicating

Correct Answer: eradicating

Candidate Answer: eradicating

QID : 275 - In the following passage some of the words have been left out. Read the passage carefully and select the correct answer for the given blank out of the four alternatives.

Child labour is commonly seen at various places in India. From roadside tea stalls to big and small factories producing _____ products like cement, handloom and jute products, carpets, fashionable tawdry ornaments and fireworks and many other hazardous jobs. Children are working in _____ condition. There have been cases where child labours were severely beaten and offered no medical help, in case they complained or try to _____. There are practical difficulties in the way of abolishing child labor overnight. Without _____ poverty child labor cannot be abolished. There must be a special _____ to check the evil.

must be a special _____ to check the evil.

Options:

- 1) war
- 2) divine
- 3) force
- 4) source

Correct Answer: war

Candidate Answer: force

QID : 276 - In an economy there could be _____ sector/sectors, which are dominant in terms of total production & employment.

एक अर्थव्यवस्था में _____ क्षेत्र हो सकते हैं, जो कुल उत्पादन तथा रोजगार के मामले में प्रधान है।

Options:

- 1) only one
केवल एक
- 2) only two
केवल दो
- 3) one or more
एक या अधिक
- 4) None of these
इनमें से कोई नहीं

Correct Answer: one or more

एक या अधिक

Candidate Answer: one or more

एक या अधिक

QID : 277 - Banks keep a small proportion of their deposits in cash with themselves as provision to pay the _____ who might come to withdraw money.

बैंक अपनी जमा राशि का एक छोटा हिस्सा स्वयं के साथ नकदी में, धन वापस लेने के लिए आने वाले _____ को भुगतान करने के प्रावधान के रूप में रखते हैं।

Options:

- 1) Borrowers
उधारकर्ताओं
- 2) Lenders
ऋणदाताओं
- 3) Other banks
अन्य बैंक
- 4) Depositors
जमाकर्ताओं

Correct Answer: Depositors
जमाकर्ताओं

Candidate Answer: Depositors
जमाकर्ताओं

QID : 278 - Which section of Indian Constitution has often been referred to as its 'conscience'?

भारतीय संविधान के किस खंड को आम तौर पर उसकी 'अंतरात्मा' भी कहते हैं?

Options:

- 1) Fundamental Duties
मौलिक कर्तव्य
- 2) Fundamental Rights
मौलिक अधिकार
- 3) Directive Principles of State Policy
राज्य के नीति निर्देशक तत्व
- 4) None of these
इनमें से कोई नहीं

Correct Answer: Fundamental Rights
मौलिक अधिकार

Candidate Answer: Directive Principles of State Policy
राज्य के नीति निर्देशक तत्व

QID : 279 - _____ is better than other forms of government because it allows us to correct its own mistakes.

_____ व्यवस्था दूसरों से बेहतर है, क्योंकि वह हमें उसकी गलतियों को ठीक करने का अवसर प्रदान करती है।

Options:

- 1) Democracy
लोकतांत्रिक
- 2) Monarchy
राजतांत्रिक
- 3) Aristocracy
कुलीनतांत्रिक
- 4) Autocracy
एकतांत्रिक

Correct Answer: Democracy
लोकतांत्रिक

Candidate Answer: Democracy
लोकतांत्रिक

QID : 280 - Which city was the capital of British India upto 1911?

1911 तक ब्रिटिश भारत की राजधानी कौन सा शहर था?

Options:

- 1) Calcutta
कलकत्ता
- 2) Delhi
दिल्ली
- 3) Lucknow
लखनऊ
- 4) Patliputra
पाटलीपुत्र

Correct Answer: Calcutta
कलकत्ता

Candidate Answer: Calcutta
कलकत्ता

QID : 281 - What were the two major cities under control of the Chahamanas?

कौन से दो प्रमुख शहर चाहमानों के नियंत्रण में थे?

Options:

- 1) Delhi and Ajmer
दिल्ली तथा अजमेर
- 2) Lahore and Amritsar
लाहौर तथा अमृतसर
- 3) Alwar and Ujjain
अलवर तथा उज्जैन
- 4) Panipat and Kurukshetra
पानीपत तथा कुरुक्षेत्र

Correct Answer: Delhi and Ajmer
दिल्ली तथा अजमेर

Candidate Answer: Alwar and Ujjain
अलवर तथा उज्जैन

QID : 282 - What is the angle made by the axis of the Earth with its orbital plane?

पृथ्वी का अक्ष अपनी कक्षीय सतह से क्या कोण बनाता है?

Options:

- 1) 11°
- 2) 33°
- 3) 66°
- 4) 15°

Correct Answer: 66°

Candidate Answer: 66°

QID : 283 - What is the thickness of the crust (in km) on the ocean floors?

समुद्र सतह में पर्पटी की मोटाई (कि.मी. में) कितनी है?

Options:

- 1) 5-10
- 2) 15-20
- 3) 25-30
- 4) 35-40

Correct Answer: 5-10

Candidate Answer: 15-20

QID : 284 - In Goitre, there is swelling of the _____.

घेघा रोग में _____ सूज जाती है।

Options:

- 1) Eyes
आँखें
- 2) Jaw's
जबड़ा
- 3) Stomach
अमाशय
- 4) Thyroid gland
थायराइड ग्रंथि

Correct Answer: Thyroid gland

थायराइड ग्रंथि

Candidate Answer: Thyroid gland

थायराइड ग्रंथि

QID : 285 - For immediate energy production in cells one should take _____.

कोशिकाओं में तत्काल ऊर्जा उत्पादन के लिए _____ लेना चाहिए।

Options:

- 1) Glucose
ग्लूकोज़
- 2) Vitamin K
विटामिन K
- 3) Vitamin C
विटामिन C
- 4) Roughage
चारा

Correct Answer: Glucose

ग्लूकोज़

Candidate Answer: Glucose

ग्लूकोज़

QID : 286 - An erythrocyte lives for approximately _____.

एक एरिथ्रोसाइट लगभग _____ जीवित रहता है।

Options:

- 1) One week
एक सप्ताह
- 2) Twelve months
बारह महीनें
- 3) Four months
चार महीनें
- 4) Four years
चार वर्ष

Correct Answer: Four months

चार महीनें

Candidate Answer: Four months

चार महीनें

QID : 287 - An iron ball and a wooden ball of the same radius are released from a height H in vacuum. The times taken by both of them to reach the ground are _____.

एक लोहे की गेंद तथा समान त्रिज्या की एक लकड़ी की गेंद को निर्वात में ऊँचाई H से छोड़ा गया है। भूमि पर पहुंचने के लिए उन दोनों द्वारा लिए गए समय _____ हैं।

Options:

- 1) different
अलग-अलग
- 2) unequal
असमान
- 3) exactly equal
ठीक बराबर
- 4) Exactly not equal
ठीक बराबर नहीं

Correct Answer: exactly equal

ठीक बराबर

Candidate Answer: exactly equal

ठीक बराबर

QID : 288 - Combination of two or more cells such that the positive terminal of one cell is connected to the negative terminal of the next cell are called _____.

दो या दो से अधिक सेलों के ऐसे संयोजन जिसमें एक सेल का धन टर्मिनल दूसरे सेल के ऋण टर्मिनल से संयोजित किया जाता है, _____ कहलाता है।

Options:

- 1) Multicell
मल्टीसेल
- 2) Wire
संयोजी तार
- 3) Battery
बैटरी
- 4) Fuse
फ्यूज़

Correct Answer: Battery

बैटरी

Candidate Answer: Battery

बैटरी

QID : 289 - In computer coding, power of 2 are used in _____ system.

कम्प्यूटर कोडिंग में, 2 की घात का प्रयोग _____ प्रणाली में किया जाता है।

Options:

- 1) Binary
बाइनरी
- 2) Decimal
दशमलव
- 3) Octadecimal
ऑक्टो दशमलव
- 4) Hexadecimal
हेक्सा दशमलव

Correct Answer: Binary

बाइनरी

Candidate Answer: Binary

बाइनरी

QID : 290 - The law of multiple proportion was discovered by _____.

लॉ ऑफ मल्टीपल प्रपोर्शन की खोज _____ द्वारा की गई थी।

Options:

- 1) John Dalton
जॉन डाल्टन
- 2) Robert Brown
रॉबर्ट ब्राउन
- 3) Joseph Proust
जोसेफ प्रोउस्ट
- 4) Way Kanada
वे कनाडा

Correct Answer: John Dalton

जॉन डाल्टन

Candidate Answer: Joseph Proust

जोसेफ प्रोउस्ट

QID : 291 - Amongst the following elements which has the largest atomic size?

निम्नलिखित तत्वों में सबसे बड़ा परमाणु आकार किसका है?

Options:

- 1) Magnesium
मैगनीशियम
- 2) Phosphorus
फास्फोरस
- 3) Lithium
लिथियम
- 4) Sodium
सोडियम

Correct Answer: Magnesium
मैगनीशियम

Candidate Answer: Sodium
सोडियम

QID : 292 - What can be taken as average value for the amount of organic matter that is present at each step and reaches the next level of consumers?

प्रत्येक कदम पर मौजूद तथा उपभोक्ताओं के अगले स्तर तक पहुंचने वाले कार्बनिक पदार्थ की मात्रा के लिए औसत मूल्य के रूप में क्या लिया जा सकता है?

Options:

- 1) 1%
- 2) 10%
- 3) 50%
- 4) 100%

Correct Answer: 10%

Candidate Answer: 10%

QID : 293 - Which of the following scheme is aimed to track the entire education journey of students?

निम्नलिखित में से कौन सी योजना का लक्ष्य विद्यार्थियों के पूरे शिक्षात्मक यात्रा को चिह्नित करना है?

Options:

- 1) Padhe Bharat Badhe Bharat
पढ़े भारत बढ़े भारत
- 2) Saransh
सारांश
- 3) Shala Asmita Yojana
शाला अस्मिता योजना
- 4) Saksham
सक्षम

Correct Answer: Shala Asmita Yojana
शाला अस्मिता योजना

Candidate Answer: Shala Asmita Yojana
शाला अस्मिता योजना

QID : 294 - What was discovered by Thomas Edison?

थॉमस एडिसन द्वारा किसका आविष्कार किया गया था?

Options:

- 1) Electric motor
विद्युत मोटर
- 2) Electricity
विद्युत
- 3) Electric fan
विद्युत पंखा
- 4) Electric Bulb
विद्युत बल्ब

Correct Answer: Electric Bulb
विद्युत बल्ब

Candidate Answer: Electric Bulb
विद्युत बल्ब

QID : 295 - Which sport is correctly paired with its other name?

कौन सा खेल सही ढंग से इसके अन्य नाम के साथ रखा गया है?

Options:

- 1) Cricket-Baseball
क्रिकेट-बेसबॉल
- 2) Golf-Polo
गोल्फ-पोलो
- 3) Tennis-Squash
टेनिस-स्कैश
- 4) Football-Soccer
फुटबाल-सॉकर

Correct Answer: Football-Soccer
फुटबाल-सॉकर

Candidate Answer: Football-Soccer
फुटबाल-सॉकर

QID : 296 - Warli paintings derive its name from a small tribe of _____.

वारली चित्रकारी _____ की एक छोटी जनजाति का नाम है।

Options:

- 1) Maharashtra
महाराष्ट्र
- 2) West Bengal
पश्चिम बंगाल
- 3) Chhattisgarh
छत्तीसगढ़
- 4) Jharkhand
झारखंड

Correct Answer: Maharashtra

महाराष्ट्र

Candidate Answer: Maharashtra

महाराष्ट्र

QID : 297 - Which state is **NOT** among the three states to be selected for Krishi Karman Award for their record performance in the production of food grains during 2015-16?

2015-16 के दौरान अनाज के उत्पादन में उनके रिकॉर्ड प्रदर्शन के लिए कृषि कर्मन पुरस्कार के लिए कौन-सा राज्य चुने गए तीन राज्यों में से नहीं है?

Options:

- 1) Tamil Nadu
तमिलनाडु
- 2) Himachal Pradesh
हिमाचल प्रदेश
- 3) Maharashtra
महाराष्ट्र
- 4) Tripura
त्रिपुरा

Correct Answer: Maharashtra

महाराष्ट्र

Candidate Answer: Himachal Pradesh

हिमाचल प्रदेश

QID : 298 - Who is the author of book named "A Suitable Boy"?

"ए सुटेबल बॉय" नामक किताब के लेखक कौन हैं?

Options:

- 1) Vikram Seth
विक्रम सेठ
- 2) Laxmi Sehgal
लक्ष्मी सेहगल
- 3) V.S Naipaul
वी.एस. नायपॉल
- 4) Kapil Dev
कपिल देव

Correct Answer: Vikram Seth

विक्रम सेठ

Candidate Answer: V.S Naipaul

वी.एस. नायपॉल

QID : 299 - Which among the following is the first military exercise between Russia and Pakistan?

निम्नलिखित में से कौन रूस तथा पाकिस्तान के बीच पहला सैन्य अभ्यास है?

Options:

- 1) Druzhba
द्रुजबा
- 2) Khanjar
खंजर
- 3) Tropex
ट्रोपेक्स
- 4) Al-Nagah
अल-नागाह

Correct Answer: Druzhba

द्रुजबा

Candidate Answer: Khanjar

खंजर

QID : 300 - India has removed its which neighbouring country from prior referral category (PRC) for issuing of research visas?

भारत ने अपने किस पड़ोसी देश को पूर्व रेफरल श्रेणी (पीआरसी) से अनुसंधान वीजा जारी करने के लिए हटा दिया है?

Options:

- 1) Bhutan
भूटान
- 2) China
चीन
- 3) Bangladesh
बांग्लादेश
- 4) Sri-Lanka
श्रीलंका

Correct Answer: China

चीन

Candidate Answer: China
चीन

mpcareer.in