

# SSC MTS 2023 Tier 1 Sept 11 Shift 3 Question Paper with Answers

Roll Number	
Candidate Name	
Exam Date	11/09/2023
Exam Time	4:00 PM - 6:00 PM
Subject	MTS Non Tech Havaladar CBIC and CBN Examination 2023

## Section : Numerical and Mathematical Ability

**Q.1** A thief noticed a policeman at a distance of 500 m away from him. The thief starts running at a speed of 60 km/h and the policeman chased him running at a speed of 70 km/h. Find the time taken by the policeman to catch the thief (in minutes).

- Ans**
- 1. 15
  - 2. 10
  - 3. 3
  - 4. 6

Question ID : 264330153852  
Option 1 ID : 264330602874  
Option 2 ID : 264330602871  
Option 3 ID : 264330602873  
Option 4 ID : 264330602872  
Status : Answered  
Chosen Option : 3

**Q.2** If the income of T is 8 times his savings, then his expenditure is \_\_\_\_\_ times his savings.

- Ans**
- 1. 6
  - 2. 7
  - 3. 8
  - 4. 5

Question ID : 264330153803  
Option 1 ID : 264330602677  
Option 2 ID : 264330602676  
Option 3 ID : 264330602675  
Option 4 ID : 264330602678  
Status : Answered  
Chosen Option : 2

**Q.3** The average marks of 21 papers is 50. The average marks of the first 11 papers is 52 and that of the last 11 papers is 45. Find the marks of the 11th paper.

- Ans**
- 1. 17
  - 2. 14
  - 3. 20
  - 4. 15

Question ID : 264330153834  
Option 1 ID : 264330602802  
Option 2 ID : 264330602799  
Option 3 ID : 264330602800  
Option 4 ID : 264330602801  
Status : Answered  
Chosen Option : 1

**Q.4** By selling a cycle for ₹5,800, a man gains 45%. What will be the cost price of the cycle?

- Ans**
- 1. ₹3,000
  - 2. ₹4,500
  - 3. ₹4,000
  - 4. ₹3,500

Question ID : 264330162068  
Option 1 ID : 264330635600  
Option 2 ID : 264330635602  
Option 3 ID : 264330635599  
Option 4 ID : 264330635601  
Status : Answered  
Chosen Option : 3

**Q.5** Mayur and Aham enter into a partnership by making investments in the ratio 2 : 3. 10% of the total profit goes to charity. If Aham's share is ₹4,860, then what is the total profit (in ₹) earned?

- Ans**
- 1. 7,200
  - 2. 9,000
  - 3. 8,500
  - 4. 11,000

Question ID : 264330155743  
Option 1 ID : 264330610378  
Option 2 ID : 264330610376  
Option 3 ID : 264330610377  
Option 4 ID : 264330610375  
Status : Answered  
Chosen Option : 4

**Q.6** A certain sum of money lent out at simple interest amounts to ₹12,600 in 2 years and ₹16,200 in 4 years. The rate per cent per annum is:

- Ans
- 1. 25 %
  - 2.  $12\frac{6}{7}$  %
  - 3.  $17\frac{1}{2}$  %
  - 4. 20 %

Question ID : 264330159036  
Option 1 ID : 264330623505  
Option 2 ID : 264330623506  
Option 3 ID : 264330623504  
Option 4 ID : 264330623503  
Status : Answered  
Chosen Option : 4

**Q.7** Dev and Goyal together can do a piece of work in 14 days and Dev alone can do it in 27 days. In how many days can Goyal alone do it?

- Ans
- 1.  $21\frac{1}{13}$
  - 2.  $30\frac{1}{13}$
  - 3.  $29\frac{1}{13}$
  - 4.  $32\frac{1}{13}$

Question ID : 264330155755  
Option 1 ID : 264330610423  
Option 2 ID : 264330610425  
Option 3 ID : 264330610424  
Option 4 ID : 264330610426  
Status : Answered  
Chosen Option : 1

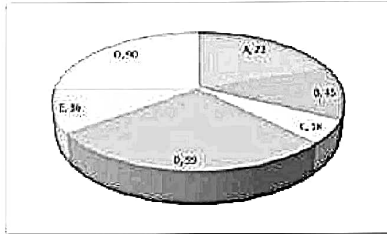
**Q.8** A company buys raw materials for ₹10,000 and manufactures a product that costs an additional ₹5,000 in labour and overhead. The product is sold to a distributor for ₹25,000, who marks it up by 20% and sells it to a retailer. The retailer then marks it up by another 25% and sells it to the end customer. What is the overall percentage profit made by the company, distributor, and retailer combined?

- Ans
- 1. 100%
  - 2. 150%
  - 3. 125%
  - 4. 135%

Question ID : 264330156266  
Option 1 ID : 264330612463  
Option 2 ID : 264330612466  
Option 3 ID : 264330612464  
Option 4 ID : 264330612465  
Status : Answered  
Chosen Option : 2

Q.9 The pie diagram represents the export of different types of fabrics (in degree measure) from India during 2015.

Out of the total export, what is the percentage of fabric B?



- Ans
- 1. 45%
  - 2. 25%
  - 3. 12.5%
  - 4. 18%

Question ID : 264330154065

Option 1 ID : 264330603723

Option 2 ID : 264330603724

Option 3 ID : 264330603725

Option 4 ID : 264330603726

Status : Answered

Chosen Option : 3

Q.10 Find the area (in  $\text{cm}^2$ ) of the rhombus, lengths of whose diagonals are, respectively, 7.5 cm and 5.6 cm.

- Ans
- 1. 21
  - 2. 28
  - 3. 27
  - 4. 30

Question ID : 264330153862

Option 1 ID : 264330602912

Option 2 ID : 264330602911

Option 3 ID : 264330602913

Option 4 ID : 264330602914

Status : Answered

Chosen Option : 2

Q.11 The average age of 25 students in a group is 14 years. When the teacher's age is included, the average increases by 1.5 years. What is the teacher's age (in years)?

- Ans
- 1. 42
  - 2. 50
  - 3. 53
  - 4. 46

Question ID : 264330156466

Option 1 ID : 264330613254

Option 2 ID : 264330613251

Option 3 ID : 264330613253

Option 4 ID : 264330613252

Status : Answered

Chosen Option : 3

Q.12 If  $a : b = 3 : 7$ , then the ratio of  $(5a + 7b) : (7a + 5b)$  is:

- Ans
- 1.  $3 : 7$
  - 2.  $7 : 11$
  - 3.  $7 : 9$
  - 4.  $8 : 7$

Question ID : 264330154081  
Option 1 ID : 264330603788  
Option 2 ID : 264330603787  
Option 3 ID : 264330603790  
Option 4 ID : 264330603789  
Status : Answered  
Chosen Option : 4

Q.13 Two-fifth of a journey is covered at a speed of 45 km/h, and the remaining distance is covered at the rate of 63 km/h. The average speed for the whole journey (in km/h, rounded off to the nearest integer) is:

- Ans
- 1. 60
  - 2. 58
  - 3. 54
  - 4. 55

Question ID : 264330156470  
Option 1 ID : 264330613267  
Option 2 ID : 264330613270  
Option 3 ID : 264330613268  
Option 4 ID : 264330613269  
Status : Answered  
Chosen Option : 1

Q.14 Some solid metallic right circular cones, each with diameter of the base 8 cm and height 6 cm are melted to form a solid sphere of radius 12 cm. Find the number of right circular cones which are melted.

- Ans
- 1. 60
  - 2. 66
  - 3. 72
  - 4. 70

Question ID : 264330156019  
Option 1 ID : 264330611476  
Option 2 ID : 264330611478  
Option 3 ID : 264330611477  
Option 4 ID : 264330611475  
Status : Answered  
Chosen Option : 3

**Q.15** Radha, Pratima and Reena begin to jog around a circular path and they complete their revolutions in 50 seconds, 75 seconds and 100 seconds, respectively. After how much time (in minutes) will they meet together at the starting point for the first time?

- Ans**
- 1. 6
  - 2. 5
  - 3. 4
  - 4. 3

Question ID : 264330155686  
Option 1 ID : 264330610150  
Option 2 ID : 264330610149  
Option 3 ID : 264330610148  
Option 4 ID : 264330610147  
Status : Answered  
Chosen Option : 2

**Q.16** A, B and C can complete a piece of work in 12 days, 24 days and 36 days, respectively. A starts working alone on the first day and then A is assisted by B on the second day and C on the third day, respectively. This pattern is repeated till the work gets completed. In how many days does the work will be over?

- Ans**
- 1. 9
  - 2. 10
  - 3.  $9\frac{1}{2}$
  - 4.  $8\frac{1}{2}$

Question ID : 264330156310  
Option 1 ID : 264330612641  
Option 2 ID : 264330612639  
Option 3 ID : 264330612642  
Option 4 ID : 264330612640  
Status : Answered  
Chosen Option : 4

**Q.17** The table shows the annual expenditure of five families during the last 5 years. (In ₹ Thousands)

Year→ Family ↓	2017	2018	2019	2020	2021
F <sub>1</sub>	35	50	55	60	45
F <sub>2</sub>	45	35	60	55	40
F <sub>3</sub>	53	40	45	65	50
F <sub>4</sub>	40	30	35	50	45
F <sub>5</sub>	35	45	55	50	45

Which family had the highest expense throughout the years?

- Ans**
- 1. F<sub>5</sub>
  - 2. F<sub>4</sub>
  - 3. F<sub>3</sub>
  - 4. F<sub>1</sub>

Question ID : 264330154061

Option 1 ID : 264330603708

Option 2 ID : 264330603710

Option 3 ID : 264330603709

Option 4 ID : 264330603707

Status : Answered

Chosen Option : 3

**Q.18** In how many years will ₹1,60,000 become ₹2,79,841 at a compound interest (Compounded annually) rate of 15% per annum?

- Ans**
- 1. 6
  - 2. 3
  - 3. 5
  - 4. 4

Question ID : 264330156189

Option 1 ID : 264330612155

Option 2 ID : 264330612158

Option 3 ID : 264330612156

Option 4 ID : 264330612157

Status : Answered

Chosen Option : 4

Q.19 Identify the single rational number that may replace the given expression.

$$[1^2 + 2^2 + 3^2 + 4^2] \times \frac{2}{3 \times 5} \div \left(\frac{1}{4}\right)^2$$

- Ans
- 1. 16
  - 2. 64
  - 3.  $\frac{1}{64}$
  - 4.  $\frac{1}{16}$

Question ID : 264330154115  
Option 1 ID : 264330603925  
Option 2 ID : 264330603923  
Option 3 ID : 264330603924  
Option 4 ID : 264330603926  
Status : Answered  
Chosen Option : 2

Q.20 Two trains A and B, 210 m and 150 m, respectively, in length, are running in the same direction on parallel lines. If the speed of A and B be 110 km/h and 128 km/h, respectively, then what will be the time (in seconds) taken by train B to cross train A?

- Ans
- 1. 72
  - 2. 74
  - 3. 71
  - 4. 70

Question ID : 264330156234  
Option 1 ID : 264330612337  
Option 2 ID : 264330612338  
Option 3 ID : 264330612336  
Option 4 ID : 264330612335  
Status : Answered  
Chosen Option : 2

Section : Reasoning Ability and Problem Solving

Q.1 Read the given statements and conclusions carefully. You have to take the given statements to be true even if they seem to be at variance from commonly known facts. You have to decide which conclusion/s logically follow/s from the given statements.

Statements: All trees are mobiles. Some mobiles are small. All small are ants.

Conclusion I: Some trees are mobiles.

Conclusion II: Some ants are small.

- Ans
- 1. Only conclusion (II) is follow.
  - 2. Neither conclusion (I) nor (II) is follow.
  - 3. Only conclusion (I) is follow.
  - 4. Both conclusions (I) and (II) are follow.

Question ID : 264330155894  
Option 1 ID : 264330610980  
Option 2 ID : 264330610981  
Option 3 ID : 264330610979  
Option 4 ID : 264330610982  
Status : Answered  
Chosen Option : 1



**Q.2** If A means '-', E means '×', D means '+', G means '-'; then what will come in place of the question mark (?) in the following equation?

$$21G14D1A2E8=?$$

- Ans**
- 1. 11
  - 2. 25
  - 3. 17
  - 4. 19

Question ID : 264330154681  
Option 1 ID : 264330606187  
Option 2 ID : 264330606190  
Option 3 ID : 264330606188  
Option 4 ID : 264330606189  
Status : Answered  
Chosen Option : 4

**Q.3** What will come in place of '?' in the following equation, if '+' and '×' are interchanged and '-' and '÷' are interchanged?

$$10 \div 2 - 6 \times 7 - 1 = ?$$

- Ans**
- 1. 24
  - 2. 19
  - 3. 18
  - 4. 15

Question ID : 264330154661  
Option 1 ID : 264330606109  
Option 2 ID : 264330606110  
Option 3 ID : 264330606108  
Option 4 ID : 264330606107  
Status : Answered  
Chosen Option : 4

**Q.4** What should come in place of ? in the given series?

$$57 \ 62 \ 72 \ 77 \ 87 \ ?$$

- Ans**
- 1. 94
  - 2. 93
  - 3. 92
  - 4. 91

Question ID : 264330151549  
Option 1 ID : 264330593826  
Option 2 ID : 264330593825  
Option 3 ID : 264330593824  
Option 4 ID : 264330593823  
Status : Answered  
Chosen Option : 3

**Q.5** What should come in place of ? in the given series based on the English alphabetical order?

LAT, KYS, JWR, IUQ, ?

- Ans**
- 1. GRQ
  - 2. HSP
  - 3. ISP
  - 4. HQR

Question ID : 26433015577  
Option 1 ID : 264330610514  
Option 2 ID : 264330610513  
Option 3 ID : 264330610512  
Option 4 ID : 264330610511  
Status : Answered  
Chosen Option : 2

**Q.6** Read the given statements and conclusions carefully. You have to take the given statements to be true even if they seem to be at variance from commonly known facts. You have to decide which conclusion's logically follow's from the given statements.

Statements: All apples are fire. All fire is hot. Some hot are crabs.

Conclusion I: No apples are hot.

Conclusion II: Some crabs are fire.

- Ans**
- 1. Only conclusion (II) is follow.
  - 2. Neither conclusion (I) nor (II) is follow.
  - 3. Only conclusion (I) is follow.
  - 4. Both conclusions (I) and (II) are follow.

Question ID : 264330155918  
Option 1 ID : 264330611076  
Option 2 ID : 264330611077  
Option 3 ID : 264330611075  
Option 4 ID : 264330611078  
Status : Answered  
Chosen Option : 2

**Q.7** Find out the correct alternative that when filled in the blanks in the same sequence will make the series logically complete.

DFZ \_ D \_ CJ DF \_ I \_ FIH DF \_ G

- Ans**
- 1. DLFFK
  - 2. KFFDL
  - 3. KDFLF
  - 4. FDFKL

Question ID : 264330154724  
Option 1 ID : 264330606361  
Option 2 ID : 264330606362  
Option 3 ID : 264330606360  
Option 4 ID : 264330606359  
Status : Answered  
Chosen Option : 2

**Q.8** 22 is related to 198 following a certain logic. Following the same logic, 41 is related to 369. To which of the following is 54 related to, following the same logic?

- Ans**
- 1. 286
  - 2. 486
  - 3. 268
  - 4. 468

Question ID : 264330151606  
Option 1 ID : 264330594052  
Option 2 ID : 264330594051  
Option 3 ID : 264330594054  
Option 4 ID : 264330594053  
Status : Answered  
Chosen Option : 2

**Q.9** What should come in place of '?' in the given series?

7 16 43 ? 367 1096 3283

- Ans**
- 1. 105
  - 2. 117
  - 3. 124
  - 4. 98

Question ID : 264330151490  
Option 1 ID : 264330593588  
Option 2 ID : 264330593589  
Option 3 ID : 264330593590  
Option 4 ID : 264330593587  
Status : Answered  
Chosen Option : 3

**Q.10** Select the word-pair that best represents a similar relationship to the one expressed in the pair of words given below.

(The words must be considered as meaningful English words and must not be related to each other based on the number of letters/number of consonants/vowels in the word)

Bacteria : Decomposition

- Ans**
- 1. Oxygen : Treatment
  - 2. Yeast : Fermentation
  - 3. Volcano : Eruption
  - 4. Antibiotic : Injection

Question ID : 264330154635  
Option 1 ID : 264330606006  
Option 2 ID : 264330606005  
Option 3 ID : 264330606003  
Option 4 ID : 264330606004  
Status : Answered  
Chosen Option : 2

Q.11 Which figure should replace the question mark (?) if the following figure series were to be continued?

L	I	G	Q	B	I	T	2	G	I	Q	2	
	B	6		6	G		Q	L		L	G	?
Q		T	T		L	I		6	6		T	

Ans

X 1.

6	I	T
	Q	2
L		G

X 2.

Q	2	6
	I	F
T		L

X 3.

6	G	T
	I	Q
2		L

✓ 4.

6	F	G
	I	T
2		L

Question ID : 264330154750  
 Option 1 ID : 264330606465  
 Option 2 ID : 264330606464  
 Option 3 ID : 264330606463  
 Option 4 ID : 264330606466  
 Status : Answered  
 Chosen Option : 2

Q.12 11 is related to 123 following a certain logic. Following the same logic, 20 is related to 402. To which of the following is 13 related to, following the same logic?

- Ans
- ✓ 1. 171
  - X 2. 172
  - X 3. 173
  - X 4. 174

Question ID : 264330151582  
 Option 1 ID : 264330593955  
 Option 2 ID : 264330593956  
 Option 3 ID : 264330593957  
 Option 4 ID : 264330593958  
 Status : Answered  
 Chosen Option : 1

**Q.13** In a certain code language, 'SCAR' is coded as '2386' and 'RACE' is coded as '8642'. What is the code for 'E' in the given code language?

- Ans**
- 1. 8
  - 2. 4
  - 3. 2
  - 4. 6

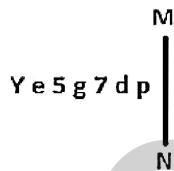
Question ID : 264330151708  
Option 1 ID : 264330594462  
Option 2 ID : 264330594459  
Option 3 ID : 264330594461  
Option 4 ID : 264330594460  
Status : Answered  
Chosen Option : 2

**Q.14** In a certain code language, 'QUALIFY' is coded as 'PTZKHYF' and 'PANTHER' is coded as 'OZMSGRE'. What is the code for 'FORCEPS' in the given code language?

- Ans**
- 1. EMOCDRQ
  - 2. DMQCERP
  - 3. DNPCDSQ
  - 4. ENQBDSQ

Question ID : 264330155829  
Option 1 ID : 264330610722  
Option 2 ID : 264330610720  
Option 3 ID : 264330610719  
Option 4 ID : 264330610721  
Status : Answered  
Chosen Option : 4

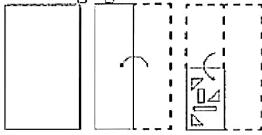
**Q.15** Select the correct mirror image of the given figure when the mirror is placed at MN as shown below.



- Ans**
- 1. qbΛg5eY
  - 2. qb∩gɹeY
  - 3. qb∩gɹeY
  - 4. dbg7ɹeY

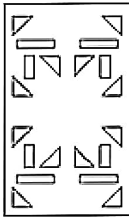
Question ID : 264330151515  
Option 1 ID : 264330593687  
Option 2 ID : 264330593690  
Option 3 ID : 264330593688  
Option 4 ID : 264330593689  
Status : Answered  
Chosen Option : 3

**Q.16** The sequence of folding a piece of paper and the manner in which the folded paper is cut is shown in the following figures. How would this paper look when unfolded?

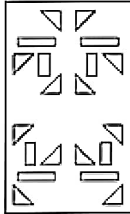


**Ans**

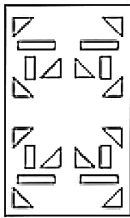
✓ 1.



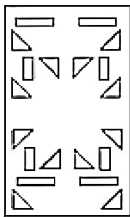
✗ 2.



✗ 3.



✗ 4.



Question ID : 264330155610

Option 1 ID : 264330609843

Option 2 ID : 264330609845

Option 3 ID : 264330609846

Option 4 ID : 264330609844

Status : Answered

Chosen Option : 1

**Q.17** If 13th March 2007 is Tuesday then what will be the day of the week on 14th Sep 2017?

**Ans**

✗ 1. Monday

✗ 2. Tuesday

✓ 3. Thursday

✗ 4. Wednesday

Question ID : 264330154335

Option 1 ID : 264330604803

Option 2 ID : 264330604804

Option 3 ID : 264330604805

Option 4 ID : 264330604806

Status : Answered

Chosen Option : 4

Q.18 Select the combination of letters that when sequentially placed in the blanks of the given series, will complete the series.

ZY\_Z\_Z\_\_ZZ\_Z

- Ans
- 1. ZYYZZ
  - 2. ZYZYY
  - 3. YZYZZ
  - 4. YYZYZ

Question ID : 264330151643  
Option 1 ID : 264330594199  
Option 2 ID : 264330594201  
Option 3 ID : 264330594202  
Option 4 ID : 264330594200  
Status : Answered  
Chosen Option : 2

Q.19 Seven people, V, F, D, S, R, C, and P are sitting in a straight line, facing south. Only two people sit between V and P. Only two people sit to the right of V. D sits third to the left of S. P is an immediate neighbour of D and F. C is an immediate neighbour of S.

Total how many people sit between S and P?

- Ans
- 1. Four
  - 2. One
  - 3. Three
  - 4. Two

Question ID : 264330161694  
Option 1 ID : 264330634106  
Option 2 ID : 264330634103  
Option 3 ID : 264330634105  
Option 4 ID : 264330634104  
Status : Answered  
Chosen Option : 3

Q.20 What should come in place of ? in the given series?

84 88 96 108 124 ?

- Ans
- 1. 124
  - 2. 154
  - 3. 134
  - 4. 144

Question ID : 264330151543  
Option 1 ID : 264330593799  
Option 2 ID : 264330593802  
Option 3 ID : 264330593800  
Option 4 ID : 264330593801  
Status : Answered  
Chosen Option : 4

Q.1 In which year did the 'Battle of Buxar' take place?

- Ans  1. 1764 CE  
 2. 1769 CE  
 3. 1757 CE  
 4. 1761 CE

Question ID : 264330162322  
Option 1 ID : 264330636616  
Option 2 ID : 264330636618  
Option 3 ID : 264330636615  
Option 4 ID : 264330636617  
Status : Answered  
Chosen Option : 1

Q.2 Which Article of the Indian Constitution mandates that the state should protect every monument or place of artistic or historic interest?

- Ans  1. Article 39A  
 2. Article 50  
 3. Article 49  
 4. Article 48A

Question ID : 264330162254  
Option 1 ID : 264330636346  
Option 2 ID : 264330636344  
Option 3 ID : 264330636343  
Option 4 ID : 264330636345  
Status : Answered  
Chosen Option : 3

Q.3 To mark the celebration of Gandhi Jayanti, the \_\_\_\_\_ celebrates it as International Day of Non-Violence.

- Ans  1. United Nations  
 2. BRICS Nations  
 3. South Asian Association for Regional Cooperation  
 4. Group of 20

Question ID : 264330160825  
Option 1 ID : 264330630633  
Option 2 ID : 264330630634  
Option 3 ID : 264330630632  
Option 4 ID : 264330630631  
Status : Answered  
Chosen Option : 1

Q.4 Alarjel Valli is a \_\_\_\_\_ dancer.

- Ans  1. Bharatnatyam  
 2. Odissi  
 3. Kuchipudi  
 4. Kathak

Question ID : 264330159068  
Option 1 ID : 264330623631  
Option 2 ID : 264330623634  
Option 3 ID : 264330623632  
Option 4 ID : 264330623633  
Status : Answered  
Chosen Option : 1



Q.5 Which of the following is an example of a microfinance institution (MFI) in India?

- Ans  1. State Bank of India (SBI)
2. Bandhan Bank
3. ICICI Bank
4. HDFC Bank

Question ID : 264330157296  
Option 1 ID : 264330616547  
Option 2 ID : 264330616549  
Option 3 ID : 264330616548  
Option 4 ID : 264330616550  
Status : Answered  
Chosen Option : 2

Q.6 Which of the following is an autobiography by Mahatma Gandhi?

- Ans  1. The Story of My Experiments with Truth
2. My Truth
3. Matters of Discretion
4. My Country My Life

Question ID : 264330161756  
Option 1 ID : 264330634351  
Option 2 ID : 264330634354  
Option 3 ID : 264330634353  
Option 4 ID : 264330634352  
Status : Answered  
Chosen Option : 1

Q.7 Which of the following has initiated the Village Defence Guards scheme to instil a sense of self protection and ensure the safety and security of villages and infrastructural installations in and around the villages?

- Ans  1. Ladakh
2. Uttar Pradesh
3. Jammu and Kashmir
4. Rajasthan

Question ID : 264330161407  
Option 1 ID : 264330632957  
Option 2 ID : 264330632958  
Option 3 ID : 264330632955  
Option 4 ID : 264330632956  
Status : Answered  
Chosen Option : 3

Q.8 The Sirpur Shrine is situated in which of the following states?

- Ans  1. Odisha
2. Uttar Pradesh
3. Chhattisgarh
4. Bihar

Question ID : 264330160756  
Option 1 ID : 264330630357  
Option 2 ID : 264330630358  
Option 3 ID : 264330630355  
Option 4 ID : 264330630356  
Status : Answered  
Chosen Option : 4

Q.9 Which of the following factors does NOT affect the climate of India?

- Ans
- 1. Altitude
  - 2. Longitude
  - 3. Latitude
  - 4. Winds

Question ID : 264330157828  
Option 1 ID : 264330618671  
Option 2 ID : 264330618674  
Option 3 ID : 264330618672  
Option 4 ID : 264330618673  
Status : Answered  
Chosen Option : 4

Q.10 What is the common name for a saturated solution of calcium hydroxide widely used as a raw material in the chemical industry?

- Ans
- 1. Slaked lime
  - 2. Calomel
  - 3. Burnt Lime
  - 4. Limestone

Question ID : 264330161053  
Option 1 ID : 264330631544  
Option 2 ID : 264330631543  
Option 3 ID : 264330631545  
Option 4 ID : 264330631546  
Status : Answered  
Chosen Option : 2

Q.11 Who among the following singers is from Andhra Pradesh?

- Ans
- 1. Usha Uthup
  - 2. Asha Bhosle
  - 3. Alka Yagnik
  - 4. S Janaki

Question ID : 264330162234  
Option 1 ID : 264330636264  
Option 2 ID : 264330636263  
Option 3 ID : 264330636266  
Option 4 ID : 264330636265  
Status : Answered  
Chosen Option : 4

Q.12 Who led the Congress in the second round table conference held in London?

- Ans
- 1. Annie Besant
  - 2. Sarojini Naidu
  - 3. Jawahar Lal Nehru
  - 4. Mahatma Gandhi

Question ID : 264330162335  
Option 1 ID : 264330636670  
Option 2 ID : 264330636669  
Option 3 ID : 264330636668  
Option 4 ID : 264330636667  
Status : Answered  
Chosen Option : 4

Q.13 According to the Census of India 2011, which state has the second highest sex ratio?

- Ans  1. Kerala  
 2. Tamil Nadu  
 3. Assam  
 4. Bihar

Question ID : 264330160159  
Option 1 ID : 264330627975  
Option 2 ID : 264330627976  
Option 3 ID : 264330627977  
Option 4 ID : 264330627978  
Status : Answered  
Chosen Option : 3

Q.14 Factor cost is also known as:

- Ans  1. market cost  
 2. ex-factory cost  
 3. input cost  
 4. output cost

Question ID : 264330161458  
Option 1 ID : 264330633161  
Option 2 ID : 264330633162  
Option 3 ID : 264330633159  
Option 4 ID : 264330633160  
Status : Answered  
Chosen Option : 3

Q.15 Which cell found in the bone marrow acts as a repair system for the body?

- Ans  1. Bone Cells  
 2. Fat Cells  
 3. Muscle cells  
 4. Stem cells

Question ID : 264330161085  
Option 1 ID : 264330631672  
Option 2 ID : 264330631673  
Option 3 ID : 264330631674  
Option 4 ID : 264330631671  
Status : Answered  
Chosen Option : 4

Q.16 Which of the following is a famous folk dance of Rajasthan?

- Ans  1. Chang Lo  
 2. Daskathia  
 3. Kalbelia  
 4. Pala Jatra

Question ID : 264330159058  
Option 1 ID : 264330623591  
Option 2 ID : 264330623594  
Option 3 ID : 264330623592  
Option 4 ID : 264330623593  
Status : Answered  
Chosen Option : 3

Q.17 When was the first general election for Lok Sabha held in India?

- Ans  1. 1950-51  
 2. 1949-50  
 3. 1948-49  
 4. 1951-52

Question ID : 264330160863  
Option 1 ID : 264330630785  
Option 2 ID : 264330630784  
Option 3 ID : 264330630783  
Option 4 ID : 264330630786  
Status : Answered  
Chosen Option : 4

Q.18 Who among the following female singers has been felicitated with the Bharat Ratna?

- Ans  1. Usha Uthup  
 2. Lata Mangeshkar  
 3. Asha Bhosle  
 4. Vani Jayaram

Question ID : 264330160975  
Option 1 ID : 264330631233  
Option 2 ID : 264330631232  
Option 3 ID : 264330631231  
Option 4 ID : 264330631234  
Status : Answered  
Chosen Option : 2

Q.19 Which of the following states of India is the first to receive rainfall from the South West Monsoon?

- Ans  1. Himachal Pradesh  
 2. Kerala  
 3. Telangana  
 4. Rajasthan

Question ID : 264330161518  
Option 1 ID : 264330633401  
Option 2 ID : 264330633400  
Option 3 ID : 264330633402  
Option 4 ID : 264330633399  
Status : Answered  
Chosen Option : 2

Q.20 Which famous Indian danseuse became the first woman to be nominated as a member of Rajya Sabha?

- Ans  1. Rukmini Devi Arundale  
 2. Kamala Kumari  
 3. Sitara Devi  
 4. Mrinalini Sarabhai

Question ID : 264330155475  
Option 1 ID : 264330609303  
Option 2 ID : 264330609305  
Option 3 ID : 264330609304  
Option 4 ID : 264330609306  
Status : Answered  
Chosen Option : 4

Q.21 Which of the following is a famous novel written by Munshi Premchand?

- Ans
- 1. Gunaho Ka Devta
  - 2. Kitne Pakistan
  - 3. Rag Darbari
  - 4. Godan

Question ID : 264330155502  
Option 1 ID : 264330609413  
Option 2 ID : 264330609412  
Option 3 ID : 264330609411  
Option 4 ID : 264330609414  
Status : Answered  
Chosen Option : 4

Q.22 India played in the finals of the 2023 World Test Championship against Australia. Where was this match conducted?

- Ans
- 1. Dubai
  - 2. London
  - 3. Kolkata
  - 4. Sydney

Question ID : 264330161144  
Option 1 ID : 264330631910  
Option 2 ID : 264330631907  
Option 3 ID : 264330631909  
Option 4 ID : 264330631908  
Status : Answered  
Chosen Option : 4

Q.23 D Gukesh was awarded player of the year award in March 2023. He plays which sport?

- Ans
- 1. Snooker
  - 2. Boxing
  - 3. Badminton
  - 4. Chess

Question ID : 264330158357  
Option 1 ID : 264330620788  
Option 2 ID : 264330620790  
Option 3 ID : 264330620787  
Option 4 ID : 264330620789  
Status : Answered  
Chosen Option : 2

Q.24 According to the Ministry of Textile 2022-23, which state is the second largest producer of cotton?

- Ans  1. Maharashtra  
 2. Bihar  
 3. Gujarat  
 4. Madhya Pradesh

Question ID : 264330160142  
Option 1 ID : 264330627907  
Option 2 ID : 264330627909  
Option 3 ID : 264330627908  
Option 4 ID : 264330627910  
Status : Answered  
Chosen Option : 1

Q.25 In which of the following States was the final of the 2023 Intercontinental Cup football championship held?

- Ans  1. Maharashtra  
 2. Telangana  
 3. Karnataka  
 4. Odisha

Question ID : 264330161151  
Option 1 ID : 264330631936  
Option 2 ID : 264330631938  
Option 3 ID : 264330631935  
Option 4 ID : 264330631937  
Status : Not Answered  
Chosen Option : --

Section : English Language and Comprehension

Q.1 Select the INCORRECTLY spelt word.

- Ans  1. Humorous  
 2. Necassery  
 3. Apparent  
 4. Definite

Question ID : 264330153107  
Option 1 ID : 264330599994  
Option 2 ID : 264330599992  
Option 3 ID : 264330599991  
Option 4 ID : 264330599993  
Status : Answered  
Chosen Option : 2

**Q.2** Select the option that can be used as a one-word substitute for the given group of words.

A small shop that sells fashionable clothes

- Ans**  1. Boutique  
 2. Store  
 3. Tailoring  
 4. Couture

Question ID : 264330152587  
Option 1 ID : 264330597952  
Option 2 ID : 264330597951  
Option 3 ID : 264330597954  
Option 4 ID : 264330597953  
Status : Answered  
Chosen Option : 1

**Q.3** Parts of the following sentence have been given as options. Select the option that contains an error.

The blue is a beautiful colour.

- Ans**  1. The blue  
 2. is  
 3. a  
 4. beautiful colour

Question ID : 264330152790  
Option 1 ID : 264330598751  
Option 2 ID : 264330598752  
Option 3 ID : 264330598753  
Option 4 ID : 264330598754  
Status : Answered  
Chosen Option : 1

**Q.4** Select the most appropriate option to fill in the blank.  
The Nile is the \_\_\_\_\_ river of the world.

- Ans**  1. long  
 2. longer  
 3. more longer  
 4. longest

Question ID : 264330153198  
Option 1 ID : 264330600351  
Option 2 ID : 264330600352  
Option 3 ID : 264330600354  
Option 4 ID : 264330600353  
Status : Answered  
Chosen Option : 4

**Q.5** Parts of the following sentence have been given as options. Select the option that contains an error.

Tuntun and her friends dance beautiful.

- Ans**
- 1. dance
  - 2. and her friends
  - 3. Tuntun
  - 4. beautiful

Question ID : 264330155228  
Option 1 ID : 264330608369  
Option 2 ID : 264330608368  
Option 3 ID : 264330608367  
Option 4 ID : 264330608370  
Status : Answered  
Chosen Option : 4

**Q.6** Select the most appropriate idiom to fill in the blank.  
It's risky to invest all your savings in one company; it's like \_\_\_\_\_.

- Ans**
- 1. going down in flames
  - 2. putting all your eggs in one basket
  - 3. biting the bullet
  - 4. breaking a leg

Question ID : 264330155216  
Option 1 ID : 264330608324  
Option 2 ID : 264330608325  
Option 3 ID : 264330608326  
Option 4 ID : 264330608323  
Status : Answered  
Chosen Option : 2

**Q.7** Select the option that can be used as a one-word substitute for the underlined group of words.

Sometimes we have to accept replacing something with something else, if we want to move forward.

- Ans**
- 1. evaluation
  - 2. change
  - 3. invasion
  - 4. invention

Question ID : 264330153492  
Option 1 ID : 264330601485  
Option 2 ID : 264330601486  
Option 3 ID : 264330601483  
Option 4 ID : 264330601484  
Status : Answered  
Chosen Option : 1



**Q.8** Select the most appropriate ANTONYM of the given word.  
**Dishevelled**

- Ans**  1. Assertive  
 2. Tidy  
 3. Tainted  
 4. Rigid

Question ID : 264330152720  
Option 1 ID : 264330598480  
Option 2 ID : 264330598482  
Option 3 ID : 264330598481  
Option 4 ID : 264330598479  
Status : Not Answered  
Chosen Option : --

**Q.9** Select the most appropriate option to fill in the blank.  
I \_\_\_\_\_ to many countries to find the source of true happiness.

- Ans**  1. triveled  
 2. travelled  
 3. travalled  
 4. travelld

Question ID : 264330153304  
Option 1 ID : 264330600773  
Option 2 ID : 264330600772  
Option 3 ID : 264330600771  
Option 4 ID : 264330600774  
Status : Answered  
Chosen Option : 2

**Q.10** Select the INCORRECTLY spelt word.

- Ans**  1. Abhorrent  
 2. Jugglary  
 3. Gesture  
 4. Magnificence

Question ID : 264330152785  
Option 1 ID : 264330598734  
Option 2 ID : 264330598732  
Option 3 ID : 264330598731  
Option 4 ID : 264330598733  
Status : Answered  
Chosen Option : 1

Q.11 Select the most appropriate meaning of the underlined idiom in the following sentence.

Irrespective of the chaos in the classroom, our class teacher stays cool as a cucumber.

- Ans
- 1. Stays calm and composed
  - 2. Behaves like a vegetable
  - 3. Scolds all the students in the classroom
  - 4. Develops a fever

Question ID : 264330153050  
Option 1 ID : 264330599768  
Option 2 ID : 264330599767  
Option 3 ID : 264330599770  
Option 4 ID : 264330599769  
Status : Answered  
Chosen Option : 1

Q.12 Select the most appropriate synonym of the given word.

Hazard

- Ans
- 1. Marvel
  - 2. Miracle
  - 3. Ardent
  - 4. Accident

Question ID : 264330151822  
Option 1 ID : 264330594917  
Option 2 ID : 264330594916  
Option 3 ID : 264330594918  
Option 4 ID : 264330594915  
Status : Answered  
Chosen Option : 4

Q.13 Select the most appropriate option to fill in the blank.

He is a smug and very \_\_\_\_\_ person who thinks only about himself.

- Ans
- 1. arsonist
  - 2. diffident
  - 3. egoistic
  - 4. humble

Question ID : 264330153582  
Option 1 ID : 264330601826  
Option 2 ID : 264330601824  
Option 3 ID : 264330601825  
Option 4 ID : 264330601823  
Status : Answered  
Chosen Option : 3

Q.14 Select the word segment which substitutes the bracketed word correctly and completes the sentence meaningfully.  
I (am here) since 1981.

- Ans  1. have been here  
 2. had been here  
 3. was here  
 4. has been here

Question ID : 264330152566  
Option 1 ID : 264330597869  
Option 2 ID : 264330597867  
Option 3 ID : 264330597868  
Option 4 ID : 264330597870  
Status : Answered  
Chosen Option : 1

Q.15 Parts of the following sentence have been given as options. Select the option that contains an error.  
You shall repented tomorrow for your misdeeds.

- Ans  1. for your misdeeds  
 2. tomorrow  
 3. shall repented  
 4. You

Question ID : 264330152815  
Option 1 ID : 264330598854  
Option 2 ID : 264330598853  
Option 3 ID : 264330598852  
Option 4 ID : 264330598851  
Status : Answered  
Chosen Option : 3

Q.16 Select the most appropriate option that can substitute the underlined segment in the given sentence.

She think Alex is abandoning her.

- Ans  1. was thinking  
 2. thought  
 3. thinks  
 4. was to think

Question ID : 264330153487  
Option 1 ID : 264330601464  
Option 2 ID : 264330601465  
Option 3 ID : 264330601466  
Option 4 ID : 264330601463  
Status : Answered  
Chosen Option : 3

**Q.17** Select the most appropriate segment that can substitute the bracketed word in the following sentence.  
The bridge that (connecting) the two valleys across the Brahmaputra river has recently been constructed in Arunachal Pradesh.

- Ans**
- 1. will be connecting
  - 2. had connected
  - 3. will be connected
  - 4. connects

Question ID : 264330152631  
Option 1 ID : 264330598127  
Option 2 ID : 264330598130  
Option 3 ID : 264330598128  
Option 4 ID : 264330598129  
Status : Answered  
Chosen Option : 4

**Q.18** Select the most appropriate idiom to fill in the blank.  
Naina has six children, and I always \_\_\_\_\_ with their names.

- Ans**
- 1. get mixed up
  - 2. get rid of
  - 3. get away clean
  - 4. get cold feet

Question ID : 264330153100  
Option 1 ID : 264330599963  
Option 2 ID : 264330599966  
Option 3 ID : 264330599965  
Option 4 ID : 264330599964  
Status : Answered  
Chosen Option : 1

**Q.19** Select the most appropriate option to fill in the blank.  
When it comes to planning her wedding, Maria wants \_\_\_\_\_.

- Ans**
- 1. down for the count
  - 2. a black sheep
  - 3. the whole fifteen miles
  - 4. the whole nine yards

Question ID : 264330151884  
Option 1 ID : 264330595158  
Option 2 ID : 264330595155  
Option 3 ID : 264330595156  
Option 4 ID : 264330595157  
Status : Not Answered  
Chosen Option : --

Q.20 Select the most appropriate option to fill in the blank.

I know that I can count on my best friend to be by my side through \_\_\_\_ and thin.

- Ans
- 1. tough
  - 2. heavy
  - 3. thick
  - 4. fat

Question ID : 264330151861

Option 1 ID : 264330595063

Option 2 ID : 264330595066

Option 3 ID : 264330595064

Option 4 ID : 264330595065

Status : Answered

Chosen Option : 3

**Comprehension:**

In the following passage, some words have been deleted. Read the passage carefully and select the most appropriate option to fill in each blank.

I do not know how the party ended. I do not want to know. I went (1)\_\_\_\_ upstairs, and undressed and (2)\_\_\_\_ into bed, and lay there in the burning dark while the last guest gurgled in the hall below about the wonderful evening she had spent. I lay there (3)\_\_\_\_ the front door shut after her, and Lavinia's steps came up the stairs and passed the door to the guest room beyond. And then after a couple of centuries (4)\_\_\_\_, the clock struck three and I (5)\_\_\_\_ to sleep.

SubQuestion No : 21

Q.21 Select the most appropriate option to fill in blank no. 1.

- Ans
- 1. over
  - 2. through
  - 3. around
  - 4. straight

Question ID : 264330151843

Option 1 ID : 264330594996

Option 2 ID : 264330594998

Option 3 ID : 264330594995

Option 4 ID : 264330594997

Status : Answered

Chosen Option : 4

**Comprehension:**

In the following passage, some words have been deleted. Read the passage carefully and select the most appropriate option to fill in each blank.

I do not know how the party ended. I do not want to know. I went (1)\_\_\_ upstairs, and undressed and (2)\_\_\_ into bed, and lay there in the burning dark while the last guest gurgled in the hall below about the wonderful evening she had spent. I lay there (3)\_\_\_ the front door shut after her, and Lavinia's steps came up the stairs and passed the door to the guest room beyond. And then after a couple of centuries (4)\_\_\_, the clock struck three and I (5)\_\_\_ to sleep.

**SubQuestion No : 22****Q.22** Select the most appropriate option to fill in blank no. 2.

- Ans**  1. gnawed  
 2. lurched  
 3. peeped  
 4. crawled

Question ID : 264330151844

Option 1 ID : 264330595001

Option 2 ID : 264330595000

Option 3 ID : 264330594999

Option 4 ID : 264330595002

Status : Answered

Chosen Option : 2

**Comprehension:**

In the following passage, some words have been deleted. Read the passage carefully and select the most appropriate option to fill in each blank.

I do not know how the party ended. I do not want to know. I went (1)\_\_\_ upstairs, and undressed and (2)\_\_\_ into bed, and lay there in the burning dark while the last guest gurgled in the hall below about the wonderful evening she had spent. I lay there (3)\_\_\_ the front door shut after her, and Lavinia's steps came up the stairs and passed the door to the guest room beyond. And then after a couple of centuries (4)\_\_\_, the clock struck three and I (5)\_\_\_ to sleep.

**SubQuestion No : 23****Q.23** Select the most appropriate option to fill in the blank no. 3.

- Ans**  1. still  
 2. toward  
 3. while  
 4. down

Question ID : 264330151845

Option 1 ID : 264330595004

Option 2 ID : 264330595005

Option 3 ID : 264330595003

Option 4 ID : 264330595006

Status : Answered

Chosen Option : 3

**Comprehension:**

In the following passage, some words have been deleted. Read the passage carefully and select the most appropriate option to fill in each blank.

I do not know how the party ended. I do not want to know. I went (1)\_\_\_ upstairs, and undressed and (2)\_\_\_ into bed, and lay there in the burning dark while the last guest gurgled in the hall below about the wonderful evening she had spent. I lay there (3)\_\_\_ the front door shut after her, and Lavinia's steps came up the stairs and passed the door to the guest room beyond. And then after a couple of centuries (4)\_\_\_, the clock struck three and I (5)\_\_\_ to sleep.

**SubQuestion No : 24****Q.24** Select the most appropriate option to fill in blank no. 4.

- Ans**
- 1. crossed
  - 2. eroded
  - 3. elapsed
  - 4. persisted

Question ID : 264330151846

Option 1 ID : 264330595008

Option 2 ID : 264330595010

Option 3 ID : 264330595009

Option 4 ID : 264330595007

Status : Answered

Chosen Option : 3

**Comprehension:**

In the following passage, some words have been deleted. Read the passage carefully and select the most appropriate option to fill in each blank.

I do not know how the party ended. I do not want to know. I went (1)\_\_\_ upstairs, and undressed and (2)\_\_\_ into bed, and lay there in the burning dark while the last guest gurgled in the hall below about the wonderful evening she had spent. I lay there (3)\_\_\_ the front door shut after her, and Lavinia's steps came up the stairs and passed the door to the guest room beyond. And then after a couple of centuries (4)\_\_\_, the clock struck three and I (5)\_\_\_ to sleep.

**SubQuestion No : 25****Q.25** Select the most appropriate option to fill in blank no. 5.

- Ans**
- 1. dozed off
  - 2. called off
  - 3. took off
  - 4. put off

Question ID : 264330151847

Option 1 ID : 264330595014

Option 2 ID : 264330595011

Option 3 ID : 264330595013

Option 4 ID : 264330595012

Status : Answered

Chosen Option : 1